

B+ series

Portable Industrial Borescope



Visit www.yateks.com for more info.

Industrial Endoscope
Series

Introduction:

B+ series portable endoscope is a product with rich functions, which adopts HD image processing technology and the latest improved lens to ensure clearer images, minor defects are all under your view. At the same time, Simple and humanized operation, compact and playful appearance make it not only a necessary tool for quick and visual inspection by professionals in the auto repair industry, but also the first choice to satisfy every car lover who CARES about their health.

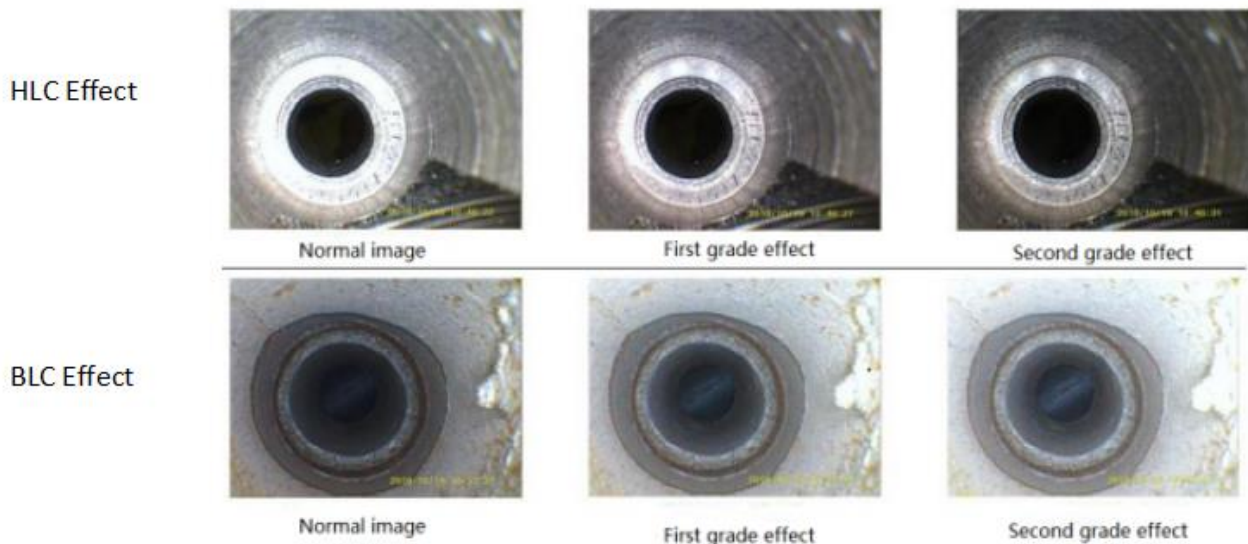
In addition, this product has a front lens with small diameter of 2.2mm, 2.8mm and side lens with a diameter of 3.0mm, so that you can choose one as needed. With one machine and multiple probe, you can get the best combination at the best price to adapt to various working conditions.

Technical Advantage:

- ◆ Unique function of strong light inhibition and weak light compensation;

High light compensation (HLC): It can effectively inhibit the reflection of light source and improve the solution of metal detection;

Back light compensation(BLC): in the weak light environment, it can see more dark details by the exposure algorithm to improve the image brightness;



Visit www.yateks.com for more info.

- ◆ Adopting brand-new HD image processing technology, ultra-clear image, minor defects are all under your view.



2.8mm probe/analog signal effect

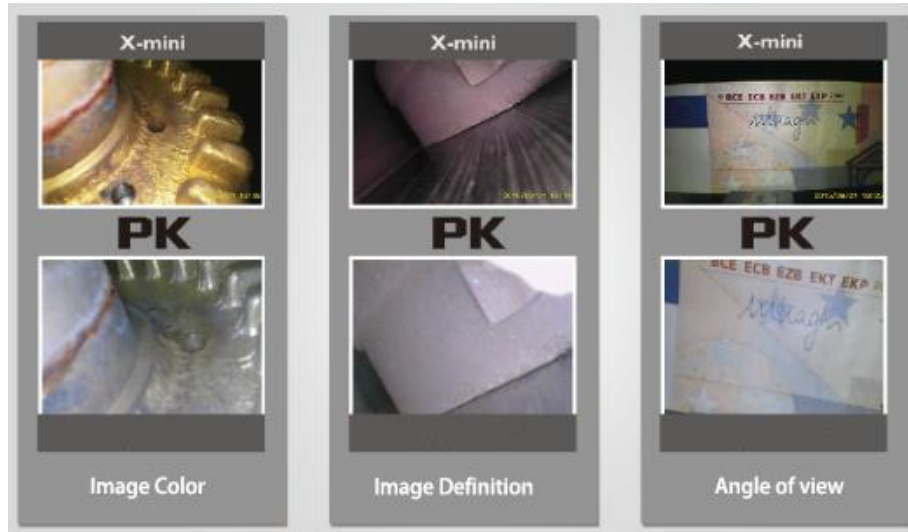


2.8mm probe/HD signal effect

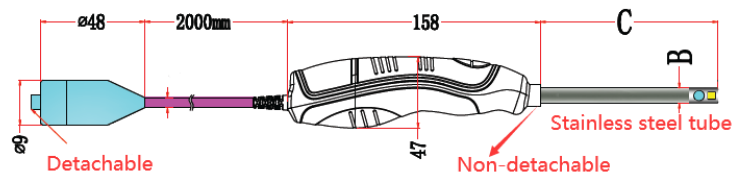
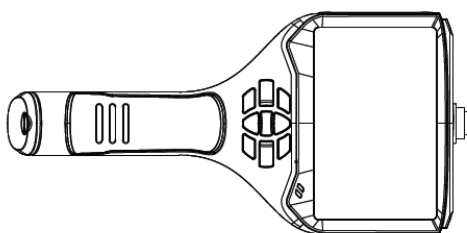
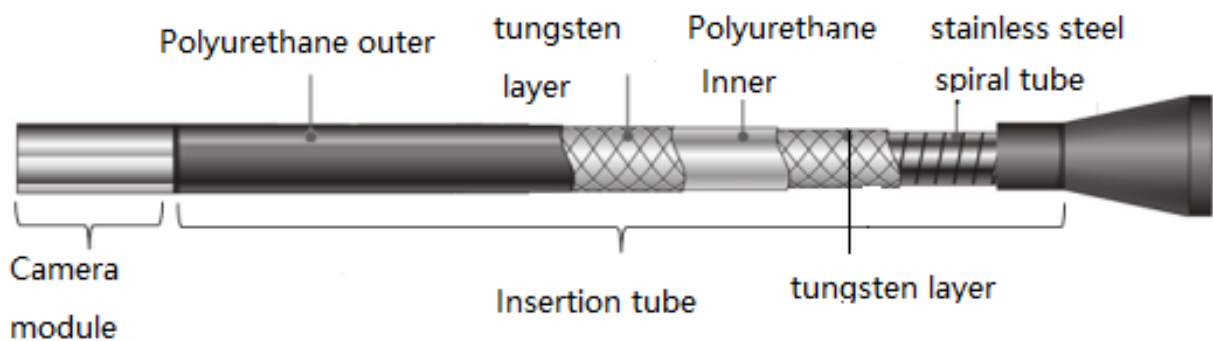
- ◆ Adopt 5.0 inch IPS wide viewing angle screen:

854*480 resolution with unique image processing technology, the picture quality is exquisite and clear; IPS wide viewing angle screen: True color representation, no reflection at any Angle, high brightness, to cope with severe industrial testing environment;

Visit www.yateks.com for more info.



- ◆ Anti-friction and anti-erosion, the insertion tube is woven with 4-layer of tungsten alloy and optional stainless steel material, IP67 standard of the probe



- ◆ Optional small diameter probe tube: front view 2.2mm; 2.8mm; side view 3.0mm.



- ◆ Collecting all digital and lossless video data completely;



- ◆ Strictly in accordance with ISO9001 quality system standard, approved CE, RoHS , product quality stable and reliable

Specification:

Display	5.0 inch IPS wide viewing angle screen
White Balance	AWB
Function	Photography, video, brightness control, image zoom, image freeze, image locking and image flip
Internal storage	TF card (up to 32GB)

Visit www.yateks.com for more info.

Data I/O port	SD card interface, HDMI, USB interface
Brightness Control	3 degree brightness adjustment
Battery	18650 lithium batteries(replaceable)
Standby time	≥6h
File management	Support image and video play, delete, format and naming
Image format	JPEG(record the date and time)
Video format	AVI (record the date and time)
Signal Output	PAL&NTSC
Language	Chinese, English, Spanish, French, German, Russian, Japanese, Korean
Probe dimension	2.2mm,2.8mm,3.0mm(side view)
Insertion tube length	2.2mm/1-1.5m;2.8mm and 3mm /1-3m
Insertion tube type	Flexible
Insertion tube material	tungsten braid or stainless steel optional
Resolution	450,000 pixels
DOF	3mm~50mm; 5-50mm
Angle of view	120°
System work temperature	-10°C~50°C
Probe work temperature	-10°C~60°C
Waterproof grade	Probe IP67

Application:

B+ series borescope can be used for visual inspection of all kinds of limited spaces, such as automobile engine, cylinder, pipe, casting, foreign matter inside container, wear inspection, etc. Can be widely use in power, petrochemical, railway, shipping and other fields.



Piston and spark plug carbon



The inside flaw of the exhaust pipe

Models for B+ series

Model No	Part No	Insertion tube type	Description									
			Diameter [mm]	Insertion Tube Length [m]	Camera				Optic		Light	
					Location	Head Type	CMOS Sensor	Resolution	Depth of Field	Angle of View	Type	[Lux]
BS210FN+	25110010	tungsten braid	2.2	2	Front	H2	E	640*480	3-50mm	90°	LED	3000
BS220FN+	25110020											
BS310FN+	25120010	tungsten braid	2.8	1	Front	H2	E	640*480	3-50mm	90°	LED	3,000
BS320FN+	25120020			2								
BS330FN+	25120030			3								
BS310SN+	25130010	tungsten braid	3	1	Side View	H1	E	640*480	3-50mm	120°	LED	4,000
BS320SN+	25130020			2								
BS330SN+	25130030			3								

(Optional stainless steel tube with the length of 0.1m, 0.3m, 1m)

Visit www.yateks.com for more info.