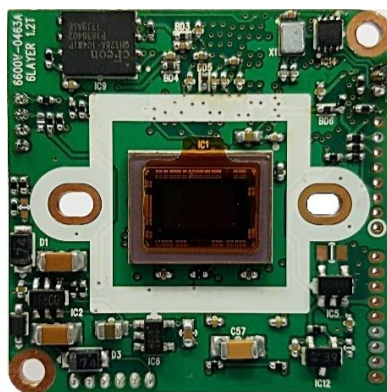


# FULL HD NETWORK CAMERA MODULE

## ACE-HMS6332-i

2Megapixel Full HD Network Camera Module



### Key Features

- 2Mega Pixel 1/2.8" SONY CMOS Sensor
- Full HD ( 1920 x 1080 : 1080p) Max. 60fps
- Digital Noise Reduction
- Double shutter WDR (Wide Dynamic Range)
- Sense Up
- H.264, MJPEG dual Codec, Dual Streaming

### Video

Imaging Device	1/2.8" 2M SONY CMOS
Total Pixel	1945 (H) × 1109 (V) approx. 2.16 M pixels
Effective Pixel	1945 (H) × 1097 (V) approx. 2.13 M pixels
Scanning System	Progressive

### Lens

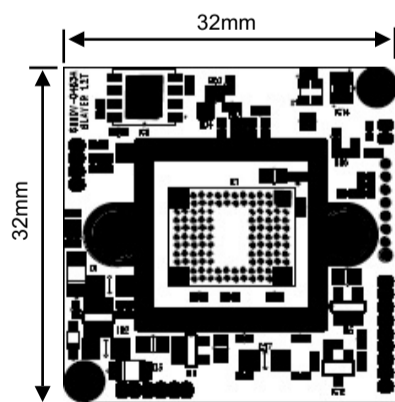
Lens Type	Manual
Mount Type	Board type

### Operational

Camera Title / Camera ID	Off / On (0 ~ 1. A ~ Z)
Day & Night	Color. BW. Auto. External
White Balance	Auto / PRESET / MANUAL
Sense Up	x2 / x4 / x8 / x16 / x32
Exposure	ALC/ELC
Shutter Speed	Auto / Manual (1/25 ~ 1/30,000)
Fix Lens	Normal / Deblur
OSD Language	ENG. KOR. CHN. JPN
De-fog	Off / On
Lens shading	Off / On
Privacy	Off / On (16 Point)
Motion	Off / On (16 Point)
Double shutter WDR	LOW / MIDDLE / HIGH
DNR	LOW / MIDDLE / HIGH
Mirror / Flip	Off / On

### Dimensions

unit : mm (inch)



### Network

Ethernet	RJ-45 (100/1000Mbps)
Video Compression Format	H.264. MJPEG
Resolution	1920X1080. 1280x720. 800x600. 640x480. 640X360. 320x240
Max. Framerate	H.264(1st). H.264(2nd): 1080p 30fps. 480p 30fps H.264 + MJPEG dual-streaming (2M 30fps)
Bitrate Control Method	CBR. VBR
Protocol	Onvif, HTTP, RTSP, TCP/IP(V4), SMTP, UpnP, DHCP
Security	Login authentication
Streaming Method	Unicast. Multicast
Web Viewer	미정

### Accessories (Optional)

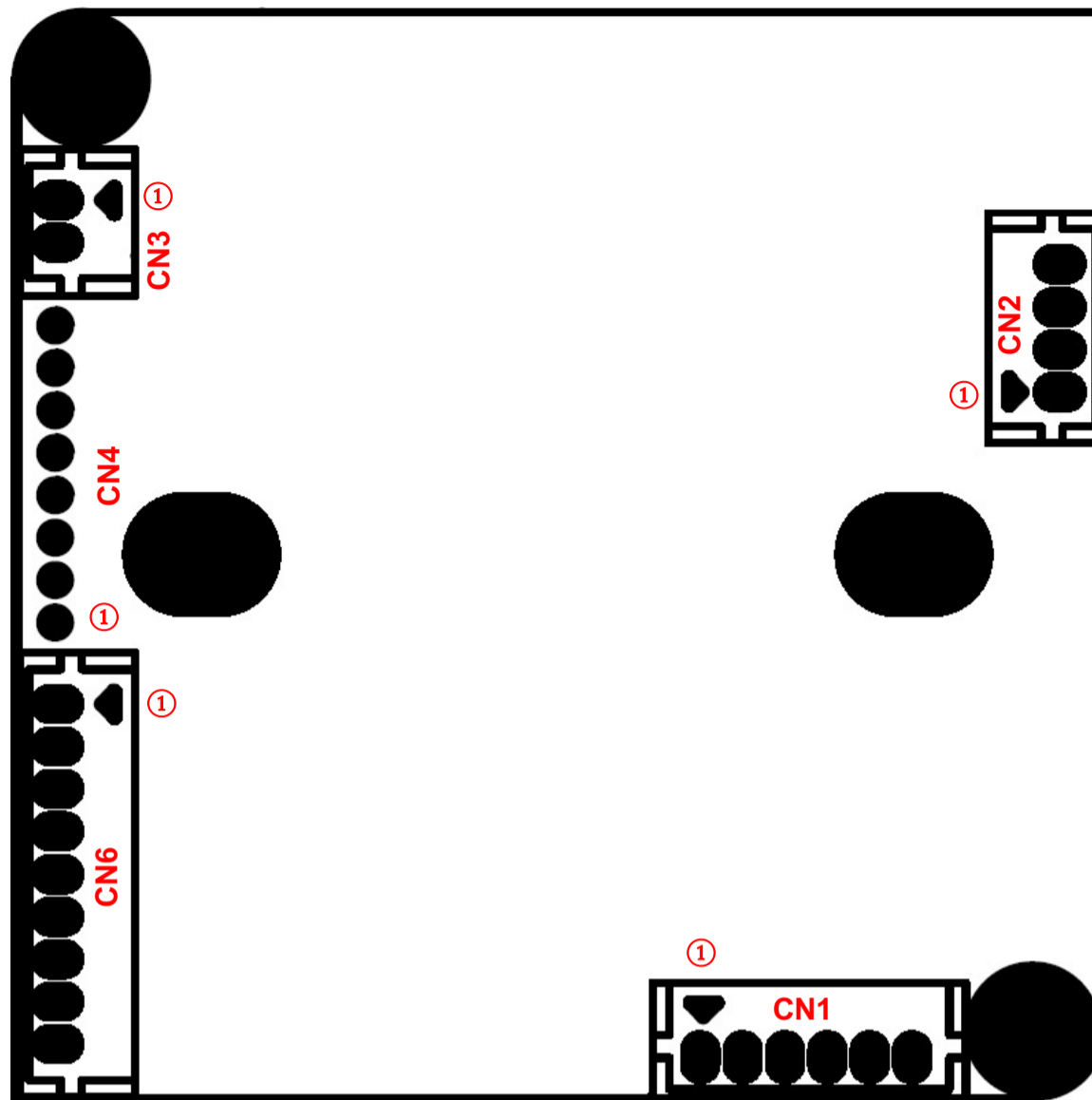
### Environmental

Operation Temperature	-10°C ~ + 55°C (14°F ~ 131°F)
-----------------------	-------------------------------

### Mechanical

Dimensions	32 x 32 (mm)
Weight	Approx. g

# PIN MAP



CN1 : POWER & NETWORK		
PIN NO.	PIN NAME	DESCRIPTION
1	DC12V	DC 12V input
2	ETH-TX+,TXP	ETHERNET TX+, PHY-TXP
3	ETH-TX-,TXM	ETHERNET TX-, PHY-TXM
4	ETH-RX+,RXP	ETHERNET RX+, PHY-RXP
5	ETH-RX-,RXM	ETHERNET RX-, PHY-RXM
6	GND	Board Ground

CN2 : IR LED		
PIN NO.	PIN NAME	DESCRIPTION
1	12V	DC12V
2	GND	Board Ground
3	CDS_IN	Day & Night input
4	IR_CTL	IR LED Output

CN3 : DAY & NIGHT		
PIN NO.	PIN NAME	DESCRIPTION
1	TDN1	DRIVE1
2	TDN2	DRIVE2

CN4 : JTAG, FLASH, UART		
PIN NO.	PIN NAME	DESCRIPTION
1	UART0_TX	UART TX
2	UART0_RX	UART RX
3	GND	Board Ground
4	JTAG-TCK	JTAG CLOCK
5	JTAG-TDO	JTAG Data Output
6	JTAG-TDI	JTAG Data Input
7	JTAG-TMS	JTAG TMS
8	RSTN	Reset

CN6 : SD-CARD		
PIN NO.	PIN NAME	DESCRIPTION
1	SDIO0-D2	SD DATA2
2	SDIO0-D3	SD DATA3
3	SDIO0-CMD	COMMAND SIGNAL
4	3.3V	DC 3.3V OUTPUT
5	SDIO0_CLK	CLOCK SIGNAL
6	GND	Board Ground
7	SDIO0-D0	SD DATA0
8	SDIO0-D1	SD DATA1
9	SDIO0-NCD	SD DETECT SIGNAL