

USE AND CLEANING INSTRUCTION

⚠ In order to keep the LED mirror look perfectly, we suggest using and cleaning the mirror system regularly.

1. Please use in safe voltage range. (100V-120V)
2. Use electrical tape to wrap around the wires to prevent leakage.
3. Do not strike mirror glass with hard or pointed items.

⚠ Please obey the following procedure when you clean the mirror.

1. It is recommended that the product is cleaned with a soft, non abrasive cloth.
2. Do not use Irritating cleaning agents or abrasive materials on any type of finished surface. Please use the any following cleanser to remove the dirt.

Gentle liquid detergent.

Colorless cleanser.

★ Product Warranty

Manufacturer warranty for 1 year from date of purchase.

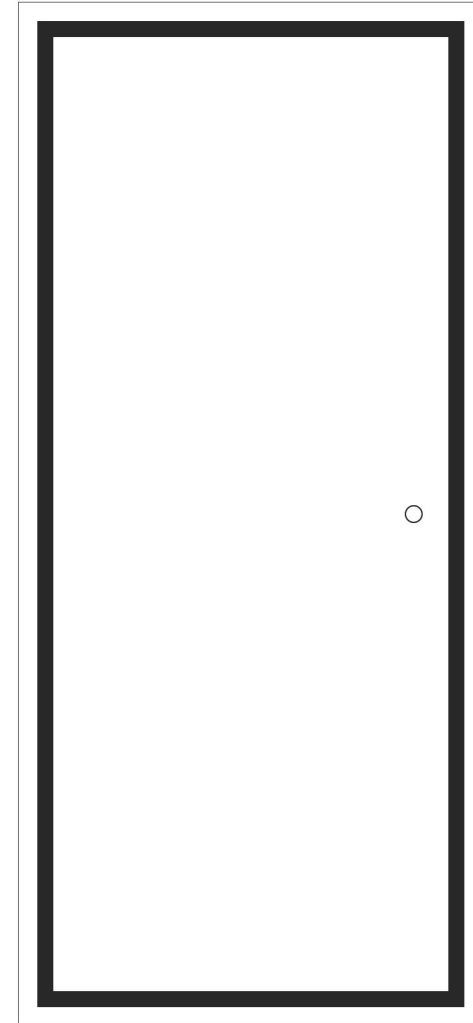
KEONJINN

If you have any problem, please feel free to contact us on

sales@keonjinn.com

KEONJINN

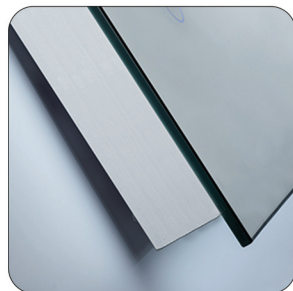
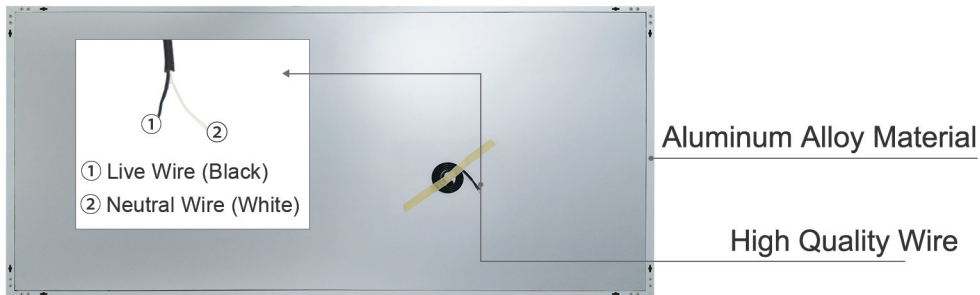
LED Full Length Mirror



Installation Instruction

PRODUCT DESCRIPTION

1. This led light mirror with a thickness of 5 mm, is not only copper-free and lead-free, but also is equipped with three silver and paint layers of protection, which is high quality and environmentally friendly.
2. LED lifetime: (50000 hours) Life time is 5 times longer than traditional mirror.
3. This wall mirror combines simple styles and functionality to create a modern home furnishing ideal for use in bathroom, kitchen, bedroom, or any other space.



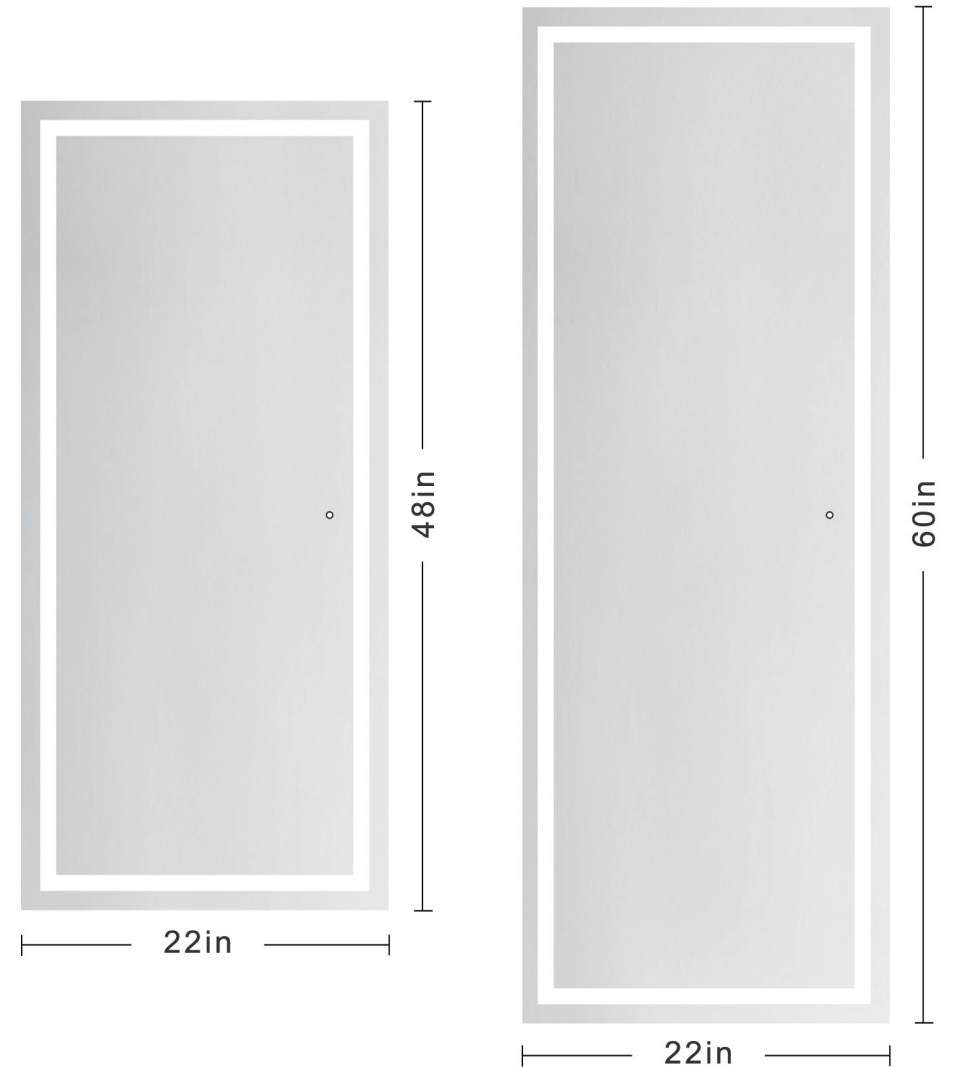
5mm Quality Mirror

01



Water-proof design

PRODUCT DIMENSIONS



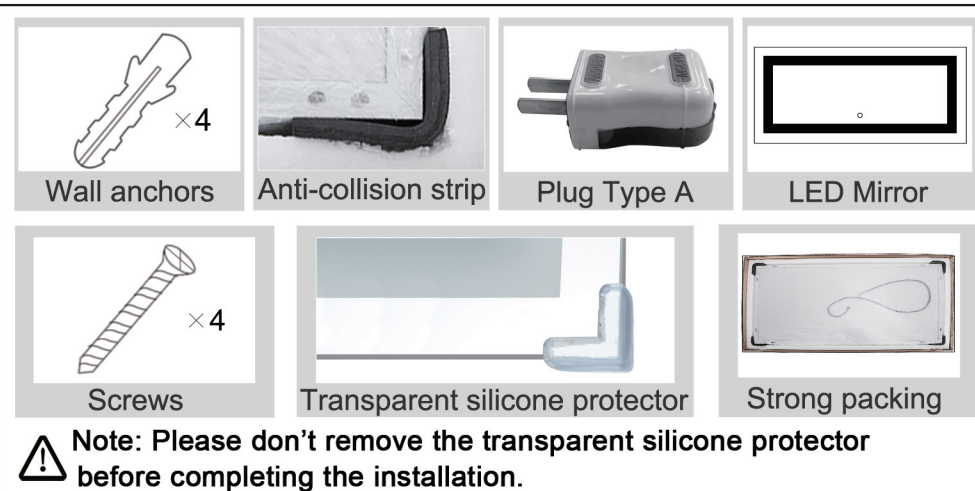
02

PRODUCT SPECIFICATION

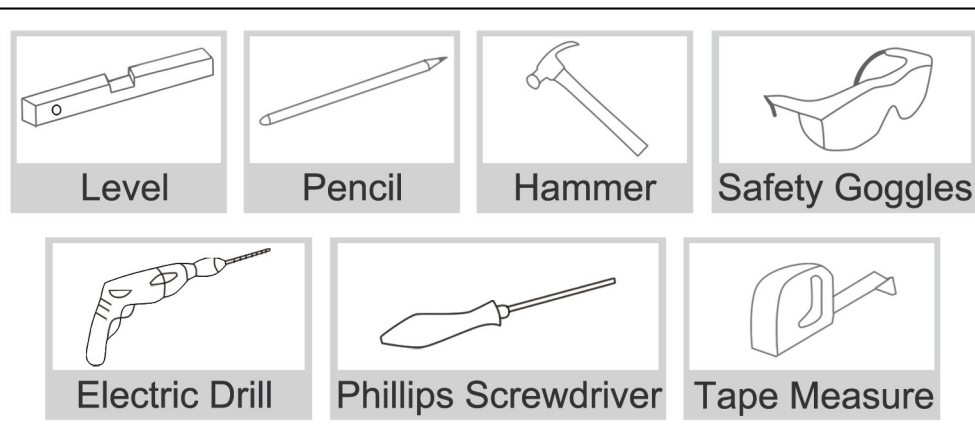
PARAMETER		SPECIFICATION
Watts	48"L x 22"W	36W
	60"L x 22"W	60W
Lumens	48"L x 22"W	4000LM
	60"L x 22"W	4836LM
Color Temperature		6000K
Input Voltage		AC100-120V
Output Voltage		12V DC
CRI		≥90 Ra
Working Temperature		-20~50℃
Life Span		≥20000 hours
Safety Compliance		ETL
IP Rate		IP54
Mirror Glass		5 mm
Wiring Method		Hardwired / Plug in
Switch		Touch Sensor Switch
Mounting Method		Wall Mount

⚠ Note: After opening the package, Please inspect the product immediately for damage in transit or missing parts. If there is any missing, Please contact us. This manual is intent to guide the installation and care instruction.


PACKING LIST



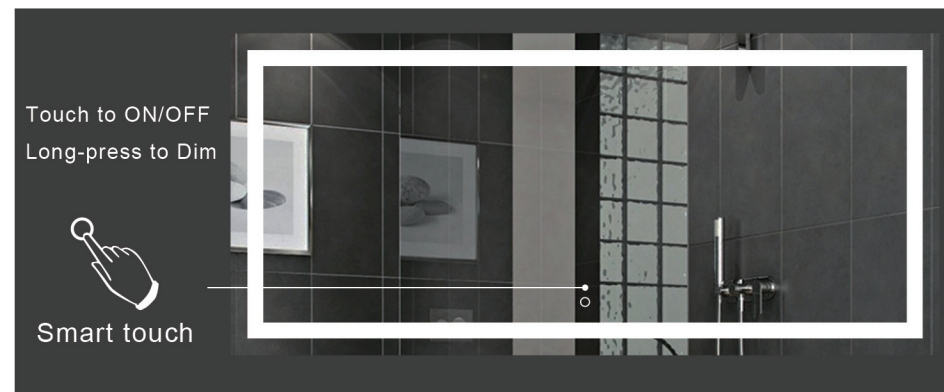
INSTALLATION TOOLS



BEFORE INSTALLATION

 Thank you very much for using Keonjinn products, in order to facilitate the use of Keonjinn products, please read this instruction carefully before you begin installation.

1. Keep the home voltages between 100V and 120 V, the best is 110V. When the home voltage exceeds 120V, please remember to use transformer.
2. You can connect the wires that are coming out of the center of the back of the mirror directly to your electrical connection box or the plug.
3. Handle the product with care and protect against knocks to all sides and edges of the glass. and please do not remove the transparent silicone protector before installation.
4. Ensure there are no hidden pipes or cables in the wall before drilling.
5. Ensure that the fixing location is able to take the weight of the complete fitting. (solid stone / brick walls).
6. Disconnect power before installing, adding or changing any component.
7. Installed by a qualified technician is recommended.
8. Wear suitable eye protection while drilling. Be careful when using power tools near water.
9. A minimum of two people is needed to perform this installation.



10. It is not recommended to wire the mirror to an external dimmer switch, as this may cause errors in the mirror system and make it unusable. This is because the mirror's power system is designed based on the principle of touch dimming (adjusting the brightness by touching the button on the mirror surface).
11. Before installation, please check to make sure the mirror is working properly :

After connecting the power, the smart button will turn white. At the moment the LED function is already on automatically. You don't need to click the button again. If you want to adjust different brightness, keep holding the smart switch, and the brightness will change. If you don't need to use it, just touch it to turn it off, then the button will be dimmed.

Memory Function: The status of the smart button will have been memorized in the mirror. The next time you open the mirror it will be in the same state it was in before it was last closed, which means that you don't have to touch the button each time.

DUAL-USE

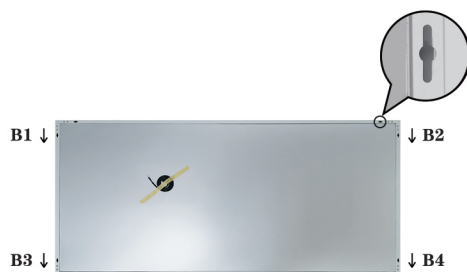
The mirror can be mounted either portrait or landscape, so there are 8 holes on the back of mirror. Please confirm the wall mount portrait or landscape before installation.

Portrait

Portrait hanging: Please measure the hole of "A1" and "A2"; and the holes of "A3" and "A4"



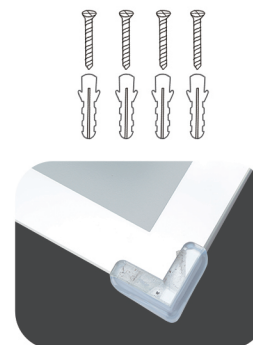
Landscape



Landscape hanging: Please measure the hole of "B1" and "B2"; and the holes of "B3" and "B4"

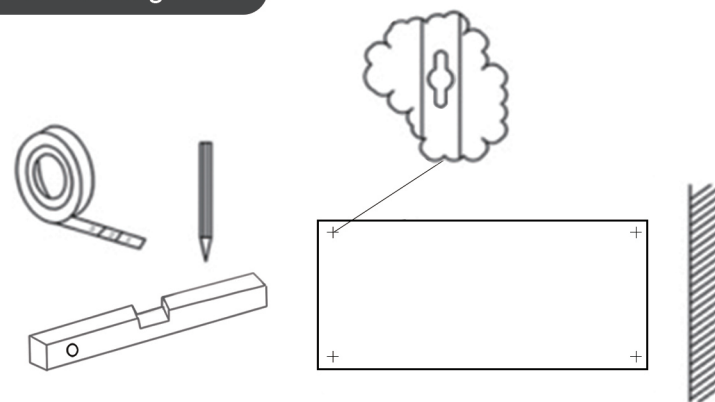
INSTALLATION OF LED MIRROR

Open the carton and make sure all the parts listed below are present.



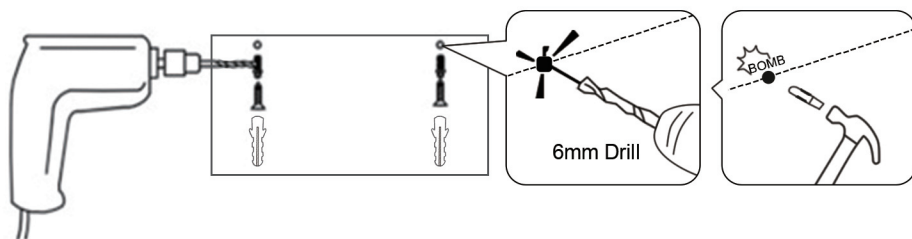
⚠ Note: Please don't remove the transparent silicone protector before completing the installation.

Distance measuring hook



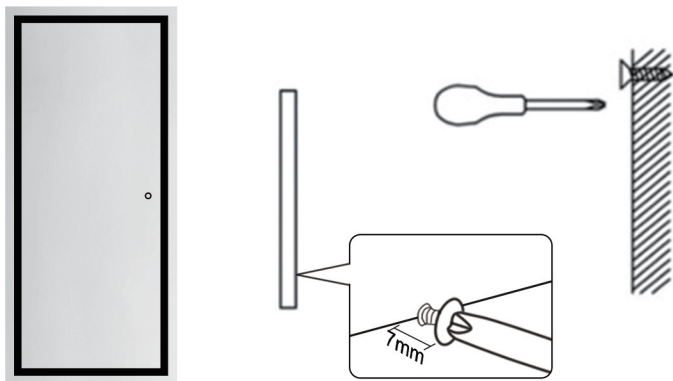
Measure the distance of four hooks centre and use the level ruler to draw a horizontal line on the wall and then mark the location of the center of hooks.

Drill pilot holes on the marked spots



Use a electric drill to punch four 6mm holes at the marked spots, and then apply wall anchors with hammer. (6mm drill bit, drilling depth in 5 cm)

Insert the screw



Use the screwdriver to lightening the screw on the wall anchors, set aside 7mm distance to wall.

Connect the power

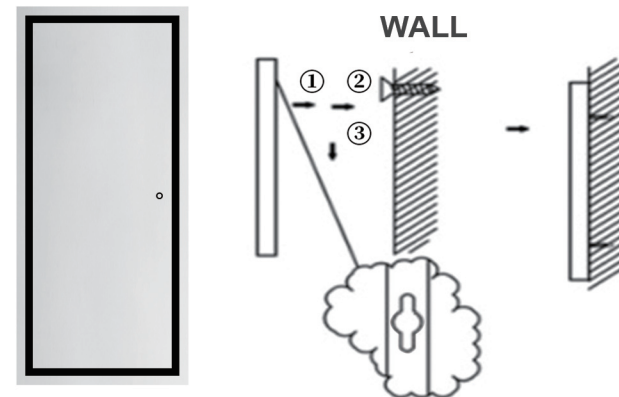
There are two power wires behind the mirror, including the live wire (black) and the neutral line (white). You can connect the wires to standard switched lighting circuit or plug.

If you want to connect power wires to plug, you can refer to the steps:

- Remove the plug cover by either "snapping" or unscrewing it.
- Unscrew the little screws on each of the plug's pins.
- Insert the twisted copper wires into the holes in the pins.
- Tighten the little screw on each of the plug's pins.
- Make sure the electrical cord is firmly gripped by the arrest or clips.
- Replace the cover of the plug.

Other power connection methods are on the same principle.

Mount the mirror on the wall and ensure it is sturdy



⚠ Note: After the installation is completed, please remove the transparent silicone protector.