

KEONJINN



## ILLUMINATED MIRROR COLLECTION

LED LIGHTED  
MIRROR EXPERT

# BE THE BEST EXPERT OF LED MIRROR



KeonJinn is the expert of producing all kinds of LED mirrors over 10 years experience. Our factory maintains a 5000 square meters workshop, five production lines, including modern machines such as pneumatic cutting machine, laser engraving machine, fully automatic punching machine, etc. Monthly capacity is 10000pcs.

We supply LED bathroom mirror, LED full-length mirror, LED metal frame mirror and normal metal frame mirror in Contemporary/Modern/Jane European style. CE, RoHS and IP54 certified, all our bathroom mirrors comply with USA/CA regulations and are safe for use in the bathroom.

Because we design and hand-craft our mirrors at our factory in China, so we can offer a comprehensive custom-made mirror design service. Whether you need a huge mirror, a unique shape, particular features or personalisation, we'll be happy to accommodate you.

## FEATURES

Main Features	01
Front Lighted LED Mirror / Back Lighted LED Mirror	02
Adjustable Brightness & 3-Color Temperature	03
Defogger	04
Bluetooth Speaker	05
Memory & Magnifier & Touch Button	06

## LED MIRROR

Frontlit Rectangle Mirror	07
Frontlit Round Mirror	08
Frontlit Oval Mirror	09
Frontlit Metal Frame Round Mirror	10
Backlit Round Mirror	11
Frontlit Full-length Mirror	12
Backlit Oval Mirror	13
Backlit Rectangle Mirror	14
3-Color White / Warm / Natural Frontlit Mirror	15
3-Color White / Warm / Natural Backlit Mirror	16
Frontlit Rounded Arc Corner Mirror	17
Backlit Smart WIFI Rectangle Mirror	18
Backlit Long Oval Mirror	19
Hollywood Makeup Mirror	20

## NON LED MIRROR

Metal Frame Mirror	21
Pivot Rectangle Mirror	22

## PACKAGING

23

## CONTACT US

24



## MAIN FEATURES



*Adjustable Brightness*



*Defogger*



*Color Temperature*



*Brightness Memory*



*Bluetooth Speaker*



*Time&Date*



*Temperature&Weather Report*



*10X Magnification*

## FRONT LIGHTED LED MIRROR

---



Frontlit style is designed to maximize the direct forward-facing lighting and reduce the overhead shadow typically from downlights. With brighter and sharper reflection, it is suitable for performing precision tasks such as makeup application and shaving.

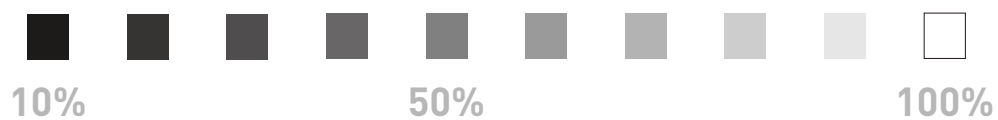
## BACK LIGHTED LED MIRROR

---



The backlit-designed mirror has light emanating from the back of the mirror towards the entire space, providing ambient lighting and aesthetics to the room.

## ADJUSTABLE BRIGHTNESS



Dimmable technology allows you to adjust the lighting level to your preference. Start your day off energized with full brightness, relax and wind down in the evening with a more subdued lighting ambience, or choose anything in between.

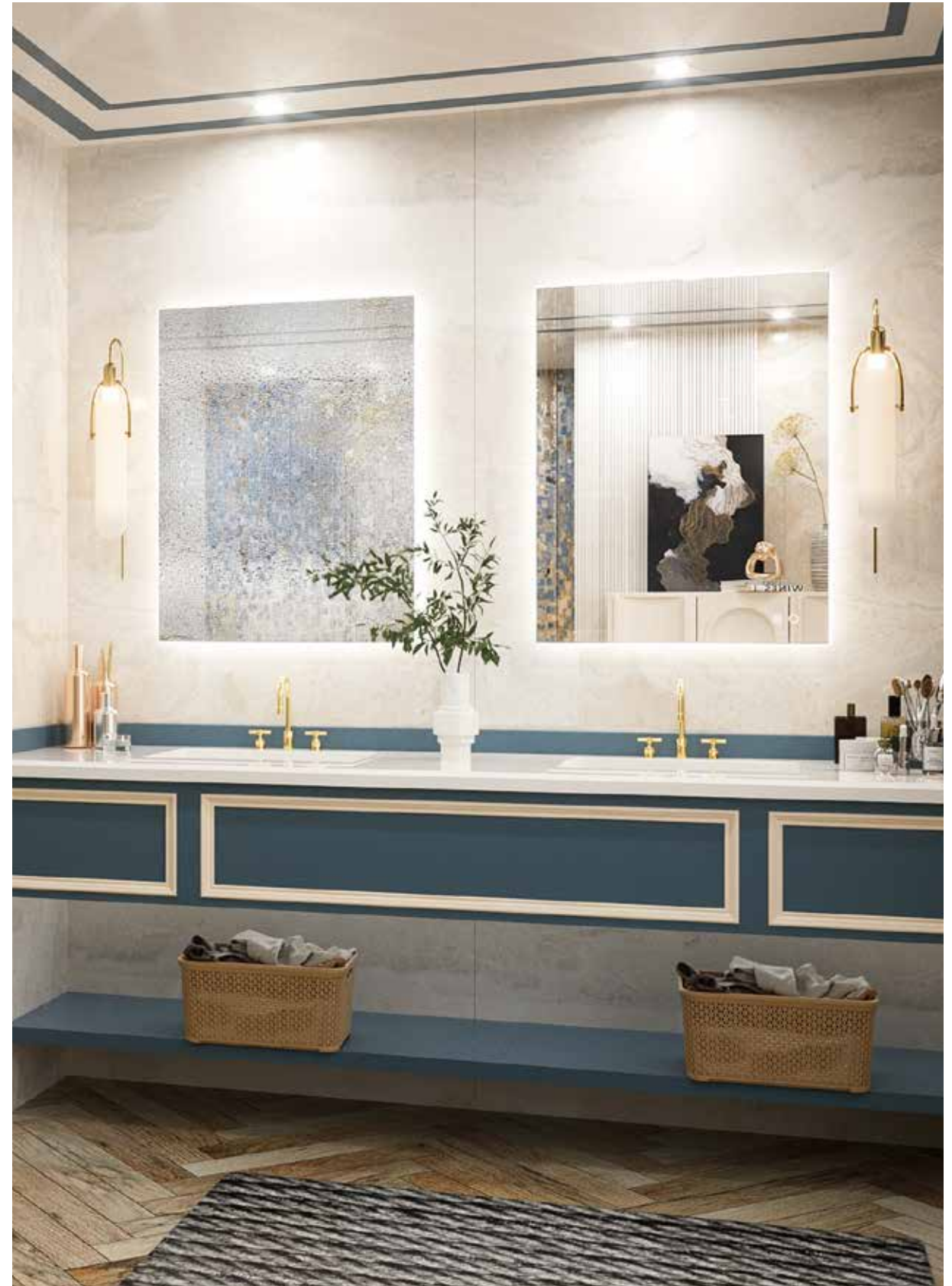
## 3-COLOR TEMPERATURE



With this ability to change the light colors from warm to cool, you can adjust the lighting of the occasion that you are attending.

## DEFOGGER

The anti-fog function allows you to take a steam shower without affecting the quality and maintenance of the mirror. In the cold winter, you can enjoy the warmth of the bathroom, which is a luxury. At the same time, you can also have a clean and transparent mirror for daily morning skin care. You can save more time without cleaning the mirror in the morning. Having a warm bathroom in the morning is more comfortable. Keonjinn series mirrors add unprecedented convenience to your daily life. Just turn on this function by touching the sensor before shower to keep it fog free. When making products, keonjinn will carefully consider every detail.





## **BLUETOOTH SPEAKER**

Keonjinn has created a makeup mirror with Bluetooth speaker. When making up, you can link the mirror speaker through Bluetooth to make up while listening to music, so as to create a space for yourself to relax.



## MEMORY

Keonjinn mirror will be saved according to the settings you adjusted last time, so that you can continue to use it next time.

## MAGNIFIER

Precision creates perfection. Magnifying the part through a magnifying glass is more conducive to make-up and dressing.



## TOUCH BUTTON

Can be controlled by simple touch.





**LED MIRROR**



# FRONTLIT RECTANGLE MIRROR

## FEATURES

Dimmable Brightness	Plug / Hardwired
Brightness Memory	Vertically / Horizontally
Support Wall Switch	Anti-fog

## INCH

20*28	24*32	24*36	28*36	30*36	36*36	40*24
40*28	40*32	48*24	48*28	48*32	48*36	55*36
60*28	60*36	60*40	72*30	72*36		

## LIGHTING SPECIFICATIONS

Kelvin: 6000K Cool White

CRI: CRI≥90

## INSTALLATION

Wall Mount

Input Voltage: 100-240V

## FEATURES AND BENEFITS

- [ Material ] : 5mm copper free environment-friendly silver mirror and shatterproof material are used, which are durable, high reflectivity, high definition and not easy to oxidize;
- [ Dimmable & memory ] : This brightness of the mirror is dimmable, controlled with a round touch button. Simply touch the round button for 3 seconds to change light intensity from normal to brightest. When the led mirror is powered off and restarted, the last use state is restored.
- [ Unique design ] : The mirror power switch and anti-fog switch are separate control. Turn on the anti-fog switch when necessary, safe and energy-saving. This built in anti-fogging function means no need to constantly treat your mirrors with fog free spray, or rinse them multiple times per shower.
- [ Use time ] : LED lifetime: over 50,000 (Using the mirror 3 hours a day means it will last 45 YEARS).





# FRONTLIT ROUND MIRROR

## FEATURES

Dimmable Brightness	Plug / Hardwired
Brightness Memory	Touch Button
Support Wall Switch	Anti-fog

## INCH

Diameter 24   Diameter 28   Diameter 32  
Diameter 36   Diameter 40

## INSTALLATION

Wall Mount  
Input Voltage: 100-240V

## LIGHTING SPECIFICATIONS

Kelvin: 6000K Cool White

CRI: CRI≥90

## FEATURES AND BENEFITS

- [ Material ] : 5mm copper free environment-friendly silver mirror and shatterproof material are used, which are durable, high reflectivity, high definition and not easy to oxidize;
- [ Dimmable Led Mirror ] : This LED round mirror light is dimmable, controlled with power switch. Simply touch the power switch button for 3 seconds to change light intensity from normal to brightest.
- [ Wall Switch Control ] : Both buttons have the memory function. The next time the circle mirror is turned on, it will remain the same as the last time it was turned off. It is recommend to use wall switch to control the backlit mirror light and defogger ON/OFF so as to save energy.
- [ Anti-fog Function ] : The power switch and anti-fog switch are separate control, anti-fog according to need to open and close, safe and energy-saving. The built-in anti-fog function means no need to constantly treat your mirrors with fog free spray, or rinse them multiple times per shower.
- [ Unique Design ] : LED lifetime: 50,000 hours (Using the mirror 3 hours a day means it will last 45 Years). IP44 waterproof rating ensures safe lighting in wet bathroom environments.





# FRONTLIT OVAL MIRROR

## FEATURES

Dimmable Brightness	Plug / Hardwired
Brightness Memory	Touch Button
Support Wall Swtich	Anti-fog

## INCH

24\*32    24\*36

## LIGHTING SPECIFICATIONS

Kelvin: 6000K Cool White  
CRI: CRI≥90

## INSTALLATION

Wall Mount  
Input Voltage: 100-240V

## FEATURES AND BENEFITS

1. [ Dimmable Led Mirror ] : This oval bathroom mirror light is dimmable, controlled with power switch. Simply touch the power switch button for 3 seconds to change light intensity from normal to brightest;
2. [ Wall Switch Control ] : Both buttons have the memory function. The next time the oval mirror is turned on, it will remain the same as the last time it was turned off. It is recommend to use wall switch to control the mirror light and defogger ON/OFF so as to save energy;
3. [ Anti-fog Function ] : The power switch and anti-fog switch are separate control, anti-fog according to need to open and close, safe and energy-saving. The built-in anti-fog function means no need to constantly treat your mirrors with fog free spray, or rinse them multiple times per shower;
4. [ Unique Design ] : LED lifetime: 50,000 hours (Using the bath mirror 3 hours a day means it will last 45 Years). With silvered reflection layer, copper free & environmentally friendly. IP44 waterproof rating ensures safe lighting in wet bathroom environments.





## FRONTLIT METAL FRAME ROUND MIRROR

### FEATURES

Dimmable Brightness	Plug / Hardwired
Brightness Memory	Touch Button
Support Wall Swtich	Anti-fog

### INCH

Diameter 32    Diameter 36

### INSTALLATION

Wall Mount  
Input Voltage: 100-240V

### LIGHTING SPECIFICATIONS

Kelvin: 6000K Cool White

CRI: CRI≥90

### FEATURES AND BENEFITS

- [ Dimming & memory ] : The brightness of our round led mirror can be adjusted. Long press the round button for 3 seconds to change the light intensity from normal to brightest. When the led mirror is shut down and restarted, it will resume the last used state. glass mirrors;
- [ Waterproof & defogging ] : The light mirror adopts a waterproof and moisture-proof back plate, with a waterproof rate of IP44, ensuring safe lighting in a humid bathroom environment. Defogging and lighting are controlled separately, and the anti-fogging switch is turned on when necessary, which is safe and energy-saving;
- [ Design style ] : The timeless circular design, combined with the simple and fashionable metal aluminum alloy frame, adds a unique embellishment to any wall. Suitable for Bathroom, Bedroom, Entry, Dining Room, Living Room, etc;
- [ Wiring support ] : Our led mirror can be connected to a plug or wall switch, and the power of the mirror can be turned on through the plug or wall switch. Note: It is currently not supported to control the brightness of the mirror through the wall dimmer switch, please use an ordinary wall switch directly to the socket. It is recommended that the wiring be handled by a professional electrician.





# BACKLIT ROUND MIRROR

## FEATURES

Dimmable Brightness	Plug / Hardwired
Brightness Memory	Touch Button
Support Wall Swtich	Anti-fog

## INCH

Diameter 24   Diameter 28   Diameter 32  
 Diameter 36   Diameter 40

## INSTALLATION

Wall Mount  
 Input Voltage: 100-240V

## LIGHTING SPECIFICATIONS

Kelvin: 6000K Cool White  
 CRI: CRI≥90

## FEATURES AND BENEFITS

1. [ Dimmable Led Mirror ] : This LED round mirror light is dimmable, controlled with power switch. Simply touch the power switch button for 3 seconds to change light intensity from normal to brightest.
2. [ Wall Switch Control ] : Both buttons have the memory function. The next time the circle mirror is turned on, it will remain the same as the last time it was turned off. It is recommend to use wall switch to control the backlit mirror light and defogger ON/OFF so as to save energy.
3. [ Anti-fog Function ] : The power switch and anti-fog switch are separate control, anti-fog according to need to open and close, safe and energy-saving. The built-in anti-fog function means no need to constantly treat your mirrors with fog free spray, or rinse them multiple times per shower.
4. [ Unique Design ] : LED lifetime: 50,000 hours (Using the mirror 3 hours a day means it will last 45 Years). With silvered reflection layer, copper free & environmentally friendly. IP44 waterproof rating ensures safe lighting in wet bathroom environments.





# FRONTLIT FULL-LENGTH MIRROR

## FEATURES

Dimmable Brightness	Plug / Hardwired
Brightness Memory	Vertically / Horizontally
Support Wall Swtich	Touch Button

## INCH

48\*22    60\*22

## LIGHTING SPECIFICATIONS

Kelvin: 6000K Cool White

CRI: CRI≥90

## INSTALLATION

Wall Mount

Input Voltage: 100-240V

## FEATURES AND BENEFITS

1. [ Touch Button & Dimmable Lighting ] : This LED full length mirror with lights uses touch button for dimming. Touch to control on/off, long press to dim.
2. [ 4000LM High Lumens ] : Unlike ordinary light strips with 60LEDs/m, our LED strips with high density 120 LEDs/m brings you ultra-high brightness. Enclosed light trough, light more concentrated and brighter.
3. [ Full Size Mirror ] : This LED full body mirror is large enough for you to see your entire outfit in a single glance. The wall mirror full length can be mounted horizontally or vertically.
4. [ Eco-friendly & Waterproof ] : IP54 waterproof rating,LED lifetime: 50,000 hours. The aluminum alloy structure provides a good texture while being aesthetically attractive and rust resistant. With silvered reflection layer, copper free & environmentally friendly.
5. [ Memory Function ] : It keeps the same brightness as the last time it was turned off. Our LED bathroom mirrors are equipped with a separate plug. It is recommend to use wall switch to control the mirror light ON/OFF so as to save energy.



## BACKLIT OVAL MIRROR

### FEATURES

Dimmable Brightness	Plug / Hardwired
Brightness Memory	Touch Button
Support Wall Swtich	Anti-fog

### INCH

24\*32

### LIGHTING SPECIFICATIONS

Kelvin: 6000K Cool White

CRI: CRI≥90

### INSTALLATION

Wall Mount

Input Voltage: 100-240V

### FEATURES AND BENEFITS

1. [ Dimmable Led Mirror ] : This oval backlit mirror light is dimmable, controlled with power switch. Simply touch the power switch button for 3 seconds to change light intensity from normal to brightest.
2. [ Wall Switch Control ] : Both buttons have the memory function. The next time the oval mirror is turned on, it will remain the same as the last time it was turned off. It is recommend to use wall switch to control the mirror light and defogger ON/OFF so as to save energy.
3. [ Anti-fog Function ] : The power switch and anti-fog switch are separate control, anti-fog according to need to open and close, safe and energy-saving. The built-in anti-fog function means no need to constantly treat your mirrors with fog free spray, or rinse them multiple times per shower.
4. [ Unique Design ] : LED lifetime: 50,000 hours (Using the bath mirror 3 hours a day means it will last 45 Years). With silvered reflection layer, copper free & environmentally friendly. IP44 waterproof rating ensures safe lighting in wet bathroom environments.





# BACKLIT RECTANGLE MIRROR

## FEATURES

Dimmable Brightness	Plug / Hardwired
Brightness Memory	Vertically / Horizontally
Support Wall Swtich	Anti-fog

## INCH

20*28	24*32	24*36	28*36	30*36	36*36	40*24
40*28	40*32	48*24	48*28	48*32	48*36	55*36
60*28	60*36	60*40	72*30	72*36		

## LIGHTING SPECIFICATIONS

Kelvin: 6000K Cool White  
CRI: CRI≥90

## INSTALLATION

Wall Mount  
Input Voltage: 100-240V

## FEATURES AND BENEFITS

- [ Dimmable Led Mirror ] : This LED backlit mirror light is dimmable, controlled with power switch. Simply touch the power switch button for 3 seconds to change light intensity from normal to brightest.
- [ Wall Switch Control ] : Both buttons have the memory function. The next time the mirror is turned on, it will remain the same as the last time it was turned off. It is recommend to use wall switch to control the mirror light and defogger ON/OFF so as to save energy.
- [ Anti-fog Function ] : The power switch and anti-fog switch are separate control, anti-fog according to need to open and close, safe and energy-saving. The built-in anti-fog function means no need to constantly treat your mirrors with fog free spray, or rinse them multiple times per shower.
- [ Unique Design ] : LED lifetime: over 50,000 hours with 6000K kelvin (Using the mirror 3 hours a day means it will last 45 YEARS) and CRI≥90; copper free Environmentally friendly materials are used with silvered reflection layer and shatterproof. IP54 waterproof rating ensures safe lighting in wet bathroom environments.





## 3-COLOR WHITE / WARM / NATURAL FRONTLIT MIRROR

### FEATURES

Dimmable 3-Color Light & Brightness	Plug / Hardwired
Brightness & Light Memory	Vertically / Horizontally
Support Wall Switch	Anti-fog

### INCH

20*28	24*32	24*36	28*36	30*36	36*36	40*24
40*32	48*24	48*32	48*36	55*36	60*28	60*36
60*40	72*36					

### LIGHTING SPECIFICATIONS

Kelvin: 3000K 4500K 6000K  
CRI: CRI≥90

### INSTALLATION

Wall Mount  
Input Voltage: 100-240V

### FEATURES AND BENEFITS

- [ Adjustable Color Temperature & Brightness ] : Short press the light button to adjust 3000K/4500K/6000K 3 color temperature light. Long press the light button to adjust the brightness of the mirror light. Only plays an auxiliary role in the brightness of the bathroom, and is not recommended as a separate lighting.
- [ Plug or Wall Switch ] : The mirror's unique memory function keeps it in the same state the next time it is opened as it was the last time it was closed. Mirrors can be connected using plugs or hardwired. We recommend using wall switch to control the mirror light and defogger ON/OFF.
- [ 2-Button Control ] : The power switch and anti-fog switch are separate control, anti-fog according to need to open and close, safe and energy-saving. The defogging function may take 5-10 minutes to completely cover/clear the entire bathroom mirror, please turn on this function before you use it.
- [ Safe and High Quality ] : The mirror is made of copper-free environmentally friendly materials and silver-plated reflective layer. Use aluminum outside frame and structure to resist moisture and corrosion. IP54 waterproof rating ensures safe lighting in wet bathroom environments.



## 3-COLOR WHITE / WARM / NATURAL BACKLIT MIRROR

### FEATURES

Dimmable 3-Color Light & Brightness	Plug / Hardwired
Brightness & Light Memory	Vertically / Horizontally
Support Wall Switch	Anti-fog

### INCH

20*28	24*32	24*36	28*36	30*36	36*36	40*24
40*32	48*24	48*32	48*36	55*36	60*28	60*36
60*40	72*36					

### LIGHTING SPECIFICATIONS

Kelvin: 3000K 4500K 6000K  
CRI: CRI≥90

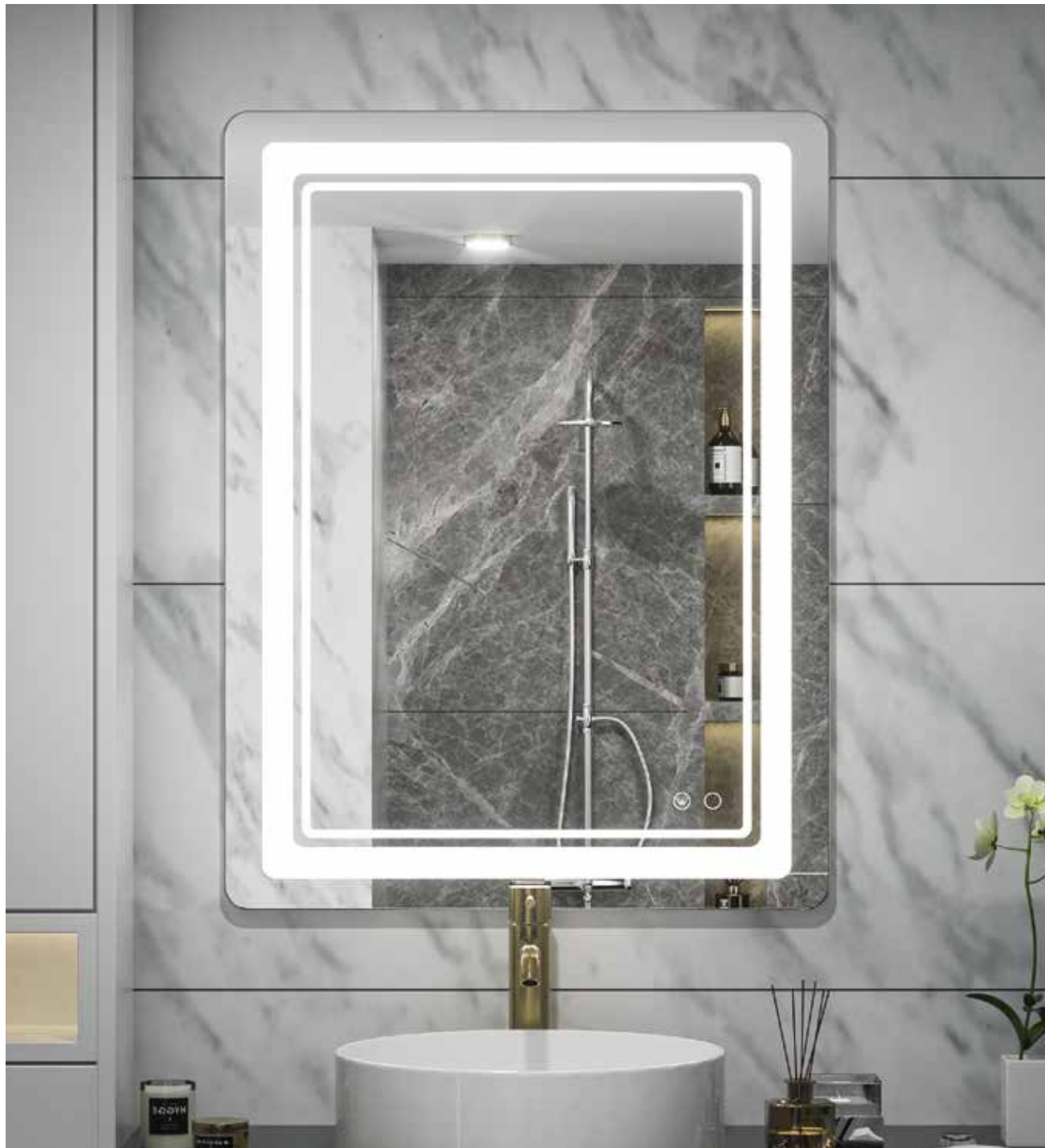
### INSTALLATION

Wall Mount  
Input Voltage: 100-240V

### FEATURES AND BENEFITS

- [ High Lumens ] : This backlit vanity mirror consists of a high-density 240LEDs/m strip, so it is almost twice or even four times brighter than other ordinary mirrors that use 60 or 120LEDs/m strips. Ultra bright LED backlighting, CRI 90+ brings high-definition imaging.
- [ Adjustable 3 Colors ] : This LED bathroom mirror light is adjustable, controlled with light button. Long press to adjust the brightness. Short press to adjustable Warm/Natural/White lights. Acrylic wrapped light strip, no exposed light strip! Make the mirror more stylish and modern, and also greatly improve the waterproof and safety level.
- [ Anti fog & Wall Switch Control ] : The light switch and anti-fog switch are separate control, anti-fog according to need to open and close, safe and energy-saving. Both buttons have the memory function. The built-in anti-fog function means no need to constantly treat your mirrors with fog free spray, or rinse them multiple times per shower. It will be more effective to turn on the defogging function before taking a shower.
- [ Eco-friendly & Waterproof ] : LED lifetime: 50,000 hours (Using the mirror 3 hours a day means it will last 45 Years). With silvered reflection layer, copper free & environmentally friendly. IP54 waterproof rating ensures safe lighting in wet bathroom environments.





## FRONTLIT ROUNDED ARC CORNER MIRROR

### FEATURES

Dimmable Brightness	Plug / Hardwired
Brightness Memory	Vertically / Horizontally
Support Wall Swtich	Anti-fog

### INCH

24\*32    28\*36    40\*24  
40\*32    48\*32

### LIGHTING SPECIFICATIONS

Kelvin: 6000K Cool White  
CRI: CRI≥90

### INSTALLATION

Wall Mount  
Input Voltage: 100-240V

### FEATURES AND BENEFITS

- [ Adjustable Brightness ] : Short press the light button to NO/OFF the mirror light. Long press the light button to adjust the brightness of the 10%-100%. Only plays an auxiliary role in the brightness of the bathroom, and is not recommended as a separate lighting.
- [ Plug or Wall Switch ] : The mirror's unique memory function keeps it in the same state the next time it is opened as it was the last time it was closed. Mirrors can be connected using plugs or hardwired. we recommend using wall switch to control the mirror light and defogger ON/OFF.
- [ 2-Button Control ] : The power switch and anti-fog switch are separate control, anti-fog according to need to open and close, safe and energy-saving. The defogging function may take 5-10 minutes to completely cover/clear the entire bathroom mirror, please turn on this function before you use it.
- [ Safe and High Quality ] : The mirror is made of copper-free environmentally friendly materials and silver-plated reflective layer. Use aluminum outside frame and structure to resist moisture and corrosion. IP54 waterproof rating ensures safe lighting in wet bathroom environments.





# BACKLIT SMART WIFI RECTANGLE MIRROR

## FEATURES

Weather Forecast	Date & Clock
Dimmable Brightness	Plug / Hardwired
Brightness Memory	Vertically / Horizontally
Support Wall Swtich	Anti-fog

## INCH

28\*36      40\*24  
40\*32      48\*30

## LIGHTING SPECIFICATIONS

Kelvin: 6000K Cool White  
CRI: CRI≥90

## INSTALLATION

Wall Mount  
Input Voltage: 100-240V

## FEATURES AND BENEFITS

- [ Unique design ] : IP54 waterproof rating ensures safe lighting in wet bathroom environments. Acrylic wrapped light strip, no exposed light strip! Make the mirror more stylish and modern, and also greatly improve the waterproof and safety level. With high density 120LEDs/m light strip, this mirror has ultra bright LED backlighting. CRI 90+ brings high-definition imaging.
- [ Dimmable Led Mirror ] : This LED backlit mirror light is dimmable, controlled with power switch. Simply touch the power switch button for 3 seconds to change light intensity from normal to brightest.
- [ Wall Switch Control ] : Both buttons have the memory function. The next time the mirror is turned on, it will remain the same as the last time it was turned off. It is recommend to use wall switch to control the mirror light and defogger ON/OFF so as to save energy.
- [ Anti-fog Function ] : The power switch and anti-fog switch are separate control, anti-fog according to need to open and close, safe and energy-saving. The built-in anti-fog function means no need to constantly treat your mirrors with fog free spray, or rinse them multiple times per shower.





# BACKLIT LONG OVAL MIRROR

## FEATURES

Dimmable Brightness	Plug / Hardwired
Brightness Memory	Vertically / Horizontally
Support Wall Swtich	Anti-fog

## INCH

24\*36 (only vertically) 24\*36  
40\*24 48\*24

## LIGHTING SPECIFICATIONS

Kelvin: 6000K Cool White  
CRI: CRI≥90

## INSTALLATION

Wall Mount  
Input Voltage: 100-240V

## FEATURES AND BENEFITS

- [ Dimmable Led Mirror ] : This oval bathroom mirror light is dimmable, controlled with power switch. Simply touch the power switch button for 3 seconds to change light intensity from normal to brightest.
- [ Wall Switch Control ] : Both buttons have the memory function. The next time the oval mirror is turned on, it will remain the same as the last time it was turned off. It is recommend to use wall switch to control the mirror light and defogger ON/OFF so as to save energy.
- [ Anti-fog Function ] : The power switch and anti-fog switch are separate control, anti-fog according to need to open and close, safe and energy-saving. The built-in anti-fog function means no need to constantly treat your mirrors with fog free spray, or rinse them multiple times per shower.
- [ Unique Design ] : LED lifetime: 50,000 hours (Using the bath mirror 3 hours a day means it will last 45 Years). With silvered reflection layer, copper free & environmentally friendly. IP44 waterproof rating ensures safe lighting in wet bathroom environments.





# HOLLYWOOD MAKEUP MIRROR

## FEATURES

Dimmable Brightness & 3-Color Light	USB Charging Port
Tabletop/Wall Mounted	10X Magnification
Bluetooth Speaker	Replaceable LED Bulbs

## INCH

23\*18    24\*32

## LIGHTING SPECIFICATIONS

Kelvin: 3000K 4500K 6000K

CRI: CRI≥90

## INSTALLATION

Wall Mount

Input Voltage: 100-240V

## MIRROR FRAME COLOR

Black: 

White: 

Golden: 

## FEATURES AND BENEFITS

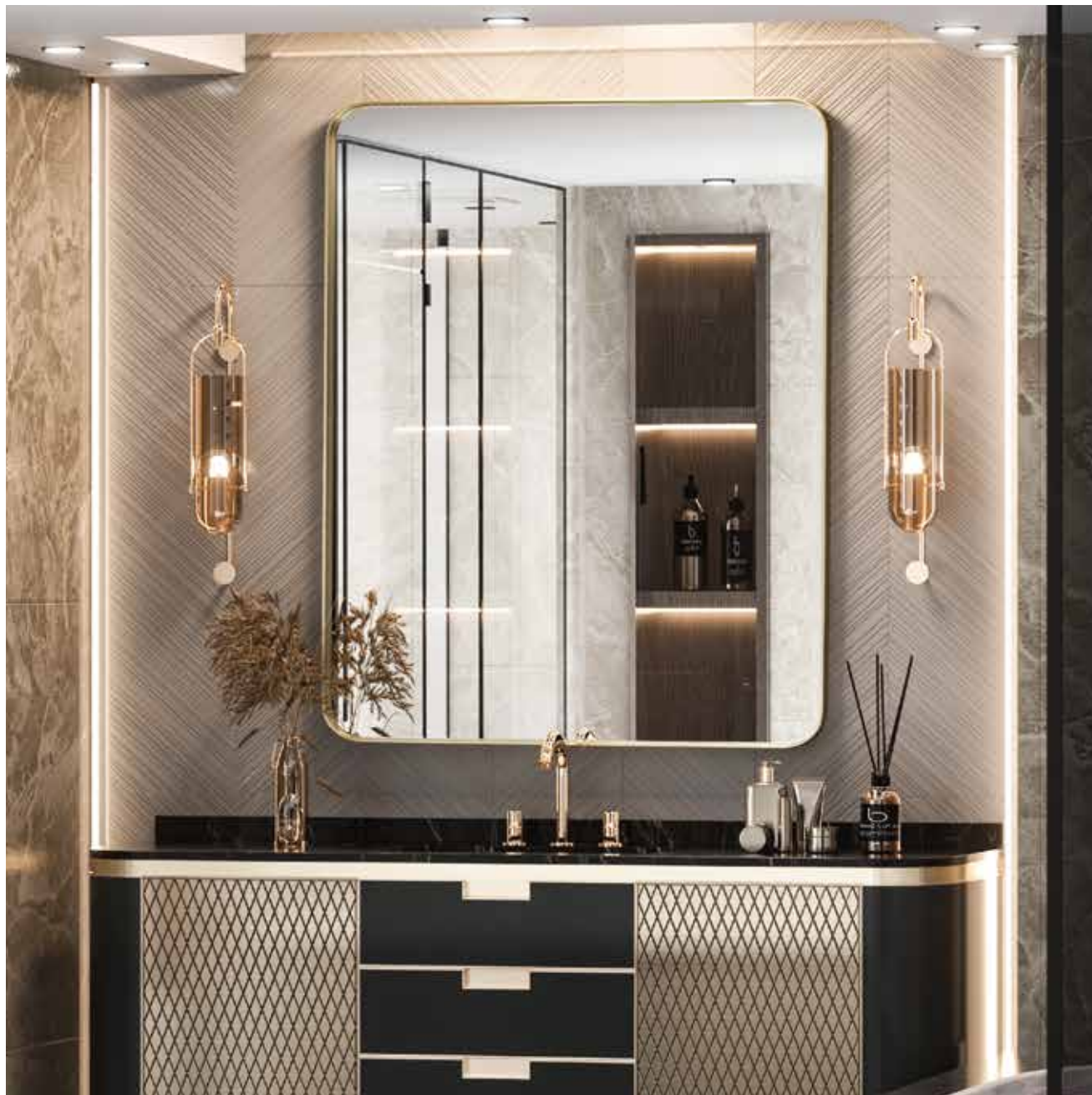
- [ Hollywood Mirror with Metal Frame ] : The Vanity mirror has a graceful metal frame and base. Fit for Dressing Room, Make up Studio, Daughter's Bedroom, Make up studio & Salon.
- [ Memory Dimmable Brightness & 3 Color Lights ] : Vanity Mirror with Lights Color can be adjust from 3000K-6000K. Memory function for optimal settings every time you turn it on.
- [ Wall Mounted & Tabletop Design ] : LED Mirror can be placed tabletop with Metal base. Or can be mounted as wall mirror.
- [ Plug-in Replaceable Bulb ] : The Lighted Make up mirror bulbs are replaceable. If the bulb fails, can be simply replaced with the 2 EXTRA Bulbs.
- [ USB Charging Port ] : This make up mirror with a USB charging port. Convenient to provide uninterrupted charging. Enjoy makeup time with ease.





**NON LED MIRROR**





# METAL FRAME MIRROR

## FEATURES

Vertically / Horizontally

## INCH

24*32	24*36	30*36	40*30	48*30
48*36	60*30	60*36	65*22	

## MIRROR FRAME COLOR

Black:

Golden:

## FEATURES AND BENEFITS

1. [ Classic&Chic ] : Unique golden metal texture is a fashion statement .Plate glass perfectly inlaid with brushed metal frame and backing.Rectangular,rounded corner design is practical and elegant.
2. [ Easy To Install ] : This lightweight mirror comes with a reinforced "+" ring clamp on the back, wall hardware and screws that can be hung horizontally or vertically.Just drive the screws into the wall and hang the clamp on the screws to complete installation.
3. [ Exceptional Quality ] : Our bathroom mirror adopts 4-layer float technology to ensure 1:1 restoration of real image, no distortion, fast dispersion of fog and shatterproof.The metal frame is made of high quality aluminum alloy and thicken baking paint.Safe and durable, waterproof without rust.
4. [ Professional Manufacturer ] : Each mirror is made to a secret standard and secured with customized thick foam in carton box.Before delivered,it passed all rigorous tests including dropping,impact test etc. Only for you to provide the perfect mirror.





# PIVOT RECTANGLE MIRROR

## FEATURES

Vertically / Horizontally

## INCH

20\*30    24\*32 (Oval style)

24\*36    40\*30

## MIRROR BRACKET COLOR

Black: 

Silver: 

## FEATURES AND BENEFITS

- [ Sturdy and Practical Wall Pivot Brackets ] : Durable and rustproof zinc alloy brackets are the indispensable accessories to install the pivot tilting mirror on the wall. With the non-slip design, the pivot brackets will hold the mirror firmer. Easy to tilt and position the pivot mirror to different angles to accommodate family members of different heights.
- [ Premium HD Safe Shatterproof Glass ] : 5 mm thickness high quality copper free glass is made of 6 layers material - shatterproof film layer, automotive grade float glass, HD silver plated reflective layer, anti-oxidation protective coating, thermal protective paint and epoxy waterproof protection. Modern and rustic farmhouse frameless design is great for bathroom or bedroom vanity.
- [ Easy to Install ] : Use shatterproof packaging to keep the mirror safer in transit. A mirror, mounting hardware and manual are included the package. Please read the manual before installation. Professional installation is recommended if this is the first time you use the electric drill. The mirror can be mounted vertically or horizontally, but the brackets only can be installed horizontally.
- [ 100% Satisfaction Guarantee ] : KeonJinn not only focus on material selection and exquisite craftsmanship, we care more about customer experience. If you have any questions, such as missing accessories, damaged package/mirror, installation method or other issues. Please feel free to contact our service team. We will reply to you within 24 hours with a 100% satisfied solution.





## PACKAGING

The mirror comes with a customized packaging to protect the mirror in all aspects. It has passed all tests including dropping test, impact test, heavy pressure test etc.



## HONEYCOMB STRUCTURE

We utilize quality honeycomb boards in most of our products. It provides compression strength and rigidity to the packaging. Along with intelligent packaging design, we reduce our carbon footprint while ensuring your product is intact.

# CONTACT US

## KEONJINN

---

Support: [service@keonjinn.com](mailto:service@keonjinn.com)

Custom-made/Pre-order/Wholesale Order: [sales01@keonjinn.com](mailto:sales01@keonjinn.com)

[www.keonjinn.com](http://www.keonjinn.com)

KEONJINN

