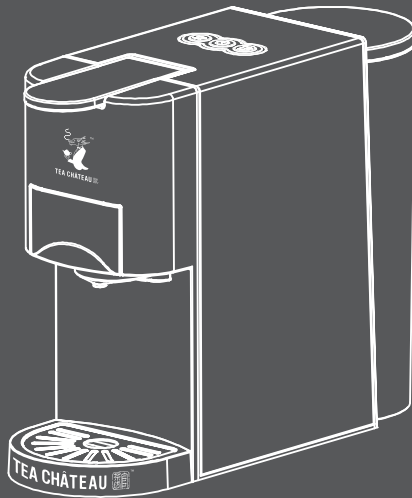




TEA CHÂTEAU



INSTRUCTION MANUAL TEA CAPSULE MACHINE



Model: AC-513K

Please read this Instruction Manual and the safety instructions before operating the appliance!
Congratulation on your purchase!
This Multifunctional Tea Capsule Machine is manufactured with the greatest care. If you use it properly, it will reward you with many years of good service. please read this operating manual carefully, paying particular attention to the safety precautions.

CONTENTS

Safety precautions.....	3-5
Unpacking.....	6
Overview of machine parts and controls.....	7
Before using for the first time.....	8-10
Instruction for use.....	11-15
Standby mode.....	16-17
Cleaning.....	18
Warning tips.....	19
Energy saving mode.....	20
Decalcification.....	21
Troubleshooting.....	22
Technical data.....	23



SAFETY PRECAUTIONS

Before using this product, carefully read this manual and retain it for future reference. Customer should read this manual and make sure they follow all safety precautions.

- To avoid electric shock, do not immerse the machine into water or any other liquid.
- Connect only to a properly grounded power socket.
- To make sure that the machine is switched off, remove the plug from the power socket.
- Always disconnect the power before:
 - * Relocating the machine.
 - * Cleaning or maintenance.
 - * Long period of being idle.
- Never clamp or run the power cable over sharp corners or edges.
- To avoid electric shock, damaged power cables should only be replaced at the customer service centre.
- To avoid electric shock, never touch the power plug/socket/cable or the machine with damp or wet hands. Never unplug by pulling the power cable. Always remove the plug by holding it directly.
- If you need an extension cable, make sure it is suitable for your machine and lay the cable properly to avoid tripping.
- Danger of scalding! Never move the machine during operation!
- Never operate the machine without water in the water tank.
- DO NOT fill water beyond the "MAX" mark of the tank, the boiling water may split out.
- Always make sure there is water in water tank not lower than the minimum level.
- Danger of burning! Never touch the very hot parts of the machine (e.g. brew unit during operations).
- Danger of scalding! Do not touch the steam or water jets.
- Danger of scalding! Do not lift the handle when the machine is operating and making tea under high pressure.
- Allow the appliance to completely cool down before moving, cleaning or storing.

- Do not use the machine in case of:
 - * Faulty operation.
 - * Damaged power cable.
 - * After falling or having other damage.
 - * In such cases, please contact the customer service center immediately to have the machine checked and repaired if necessary.
- The machine location must meet the following requirements:
 - * Place the appliance on a dry, stable, and level surface, ensuring that it is not positioned directly underneath the power socket. At least 60 cm away from the washbasin and taps.
 - * Never place it on flammable/fusible surface or equipment.
 - * Never place the machine or power cable on or closer than 50cm to hot surfaces or open flames.
 - * Never cover the machine during operation.
- Keep children away from the machine during operation.
- Only use the machine in dry rooms.
- Danger of tripping! Do not let the power cable hang down.
- This machine is only intended for household use.
- Unplug the power plug and allow the machine to cool down completely before cleaning or maintenance.
- To prevent damage, never use replacement parts or accessories not recommended by the manufacturer.
- This appliance can be used by children aged from 8 years and above if they have been provided supervision or instruction regarding use of the appliance in a safe way and if they have a clear understanding of the potential hazards involved. Cleaning and user maintenance shall not be made by children unless they are older than 8 and supervised. Keep the appliance and its cord out of reach of children aged less than 8 years.
- Appliances can be used by persons with reduced physical, sensory or mental capabilities or lack of experience and knowledge if they have been provided supervision or instruction concerning use of the appliance in a safe way and understand the hazards involved. Children shall not play with the appliance.
- The appliance is not intended for use by individuals (including children) with reduced physical, sensory, or mental capabilities, or those who lack experience and knowledge, unless they have received supervision or instruction from a person responsible for their safety. Children should be supervised to prevent them from playing with the appliance.

- If the power cord is damaged, it must be replaced by the manufacturer, its service agent or qualified persons in order to avoid a hazard.
- This appliance is for household and indoor use only.
- The appliance must not be immersed into water.
- Caution! There is potential of injury if misuse.
- Heating element surface remains hot after use.
- Coffee-maker shall not be placed in a cabinet when in use.
- Cleaning or maintenance shall not be made by children without supervision.
- This appliance is designed for use in household and similar applications, including:
 - * Staff pantries in shops, offices, and other work environments.
 - * Farmhouses.
 - * Hotels, motels, and other residential environments where customers may use it.
 - * Bedroom or kitchen environments.



UNPACKING

- Remove your Multifunctional Tea Capsule Machine from its packaging.
- After unpacking, please check that if the following parts are included:
 1. Water tank
 2. Tea machine
 3. Manual
 4. Pipe Pump
 5. Tea capsule drawer
 6. Drip tray cover and drip tray

Attention:

- Check that your home power supply voltage is the same as illustrated on the machine rating label.
- Dispose all the plastic bags to prevent danger to children!

Tip:

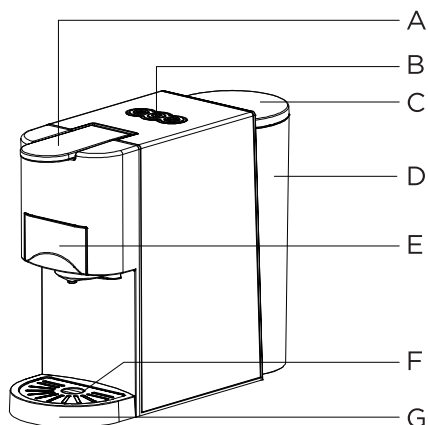
Keep the packaging for transporting the machine
(e.g. for removals, servicing, etc.)

Note:

You may find a little water remaining in the machine.

In order to ensure that this machine works perfectly, it was tested with water before leaving the factory.

OVERVIEW OF MACHINE PARTS AND CONTROLS

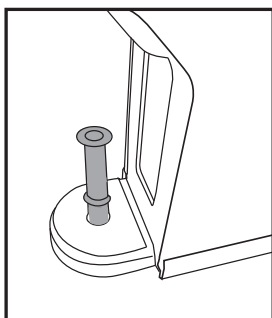


No.	Name
A	Handle
B	Control Panel
C	Water Tank Lid
D	Water Tank
E	Tea Capsule Drawer
F	Drip Tray Cover
G	Drip Tray (removable)

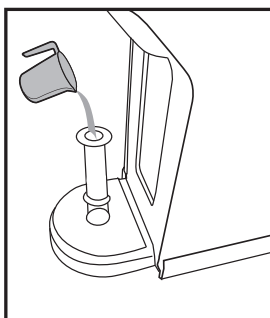


BEFORE USING FOR THE FIRST TIME

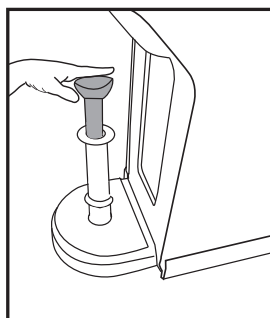
(A) Before initial use or after a period of idling (e.g. holidays), the machine may encounter difficulty in pumping water. In such cases, a simple procedure can help with self-priming by manually filling the water piping using the pipe prior to turning on the machine for the first refill.



Step 1 :
Insert the pipe into the
water entrance.



Step 2 :
Fill water into the pipe.



Step 3 :
Inject the water from
pipe into the machine so
that the internal water piping
is filled up with water.

After completing the above steps, the machine will be able to pump water out normally.

* If necessary, repeat the steps for 2 or 3 times.

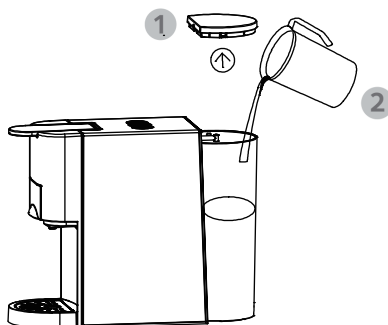
Before initial use or after a prolonged period of idling (e.g. holidays), it is necessary to flush out the machine. This simple procedure ensures thorough cleaning of the internal piping.

There are two ways to fill the water tank: directly into the machine, by using for example a jug, or by removing the water tank.

1

Filling without removing the tank

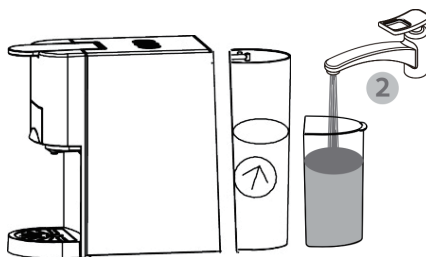
- Remove the water tank lid.
- Fill the tank with cold fresh water.
- The maximum capacity is 0.8 litre.
- Reinstall the tank lid.



OR

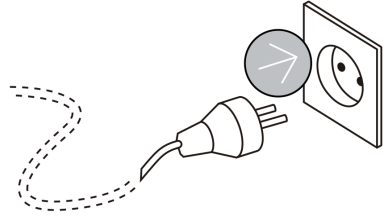
Filling by removing the water tank

- Hold the water tank at tilting angle as shown in diagram to remove the water tank from the machine.
- Fill the tank up to the "MAX" mark with cold fresh water (the maximum capacity is 0.8 litre).
- Slide the water tank slowly down to the water tank base. When the water tank is inserted in the inlet receptacle, pushing firmly on the water grip as shown in diagram to lock the water tank.



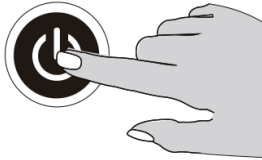
2

Connect the power supply

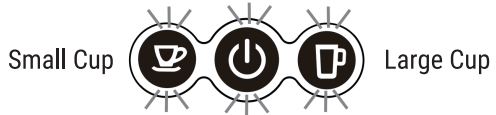


3

Press the switch button



The lights on buttons become steady when the machine is heated up. Heating time is 45 seconds approximately.



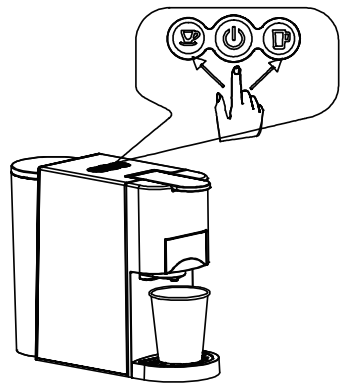
4

Press the small cup / large cup button. Wait for the appliance to completely flush out.

- Before pressing the button, make sure that:
- The handle is closed **without** capsule inside.
- The water tank is full.
- The water tank is firmly in place, otherwise water may leak.
- A large cup (250ml size or above) is placed under the dispenser.

Press the small cup button to start flush out.

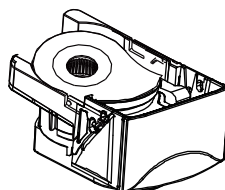
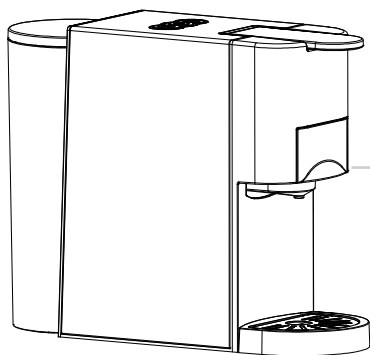
- Open the handle when the flush out process stopped automatically.
- Empty the cup.
- Flush out cycle is completed.



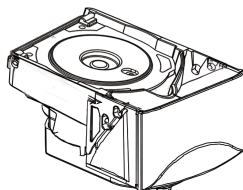
INSTRUCTION FOR USE



Tips: The machine has different adaptors for different capsules. Refer to below detail.

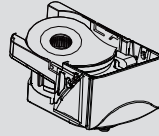


For Small / Nespresso capsules

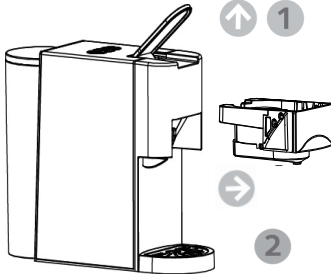


For Large / Dolce Gusto capsules

For Small / Nespresso capsules

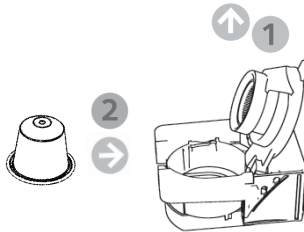


1



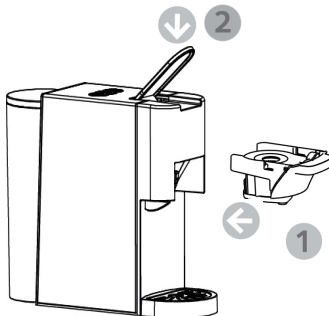
- Lift the handle.
- Pull out the tea capsule drawer for Small / Nespresso capsules.

2



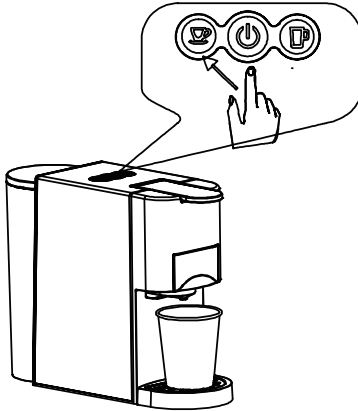
- Pull the tea capsule drawer lid. Insert a capsule into the tea capsule drawer.

3



- Push in the tea capsule drawer with capsule.
- Press the handle down.

4



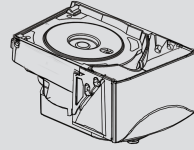
- Place a cup under the dispenser.

- Press the small cup button only once.
- The selected button will flash and the machine will start brewing. When the brewing process completes, dispensing will stop automatically when reaching the default water volume for small cup.

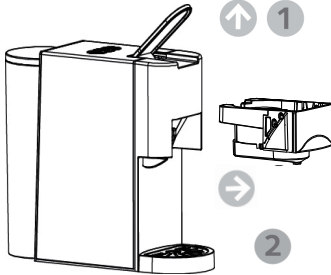
Lift the handle and pull out the tea capsule drawer to eject used capsule into waste bin.

Tips: After pressing the button, the selected button LED may flash for a few seconds first, and then start brewing. The flashing buttons indicates heating. This is a normal process.

For Large / Dolce Gusto capsules

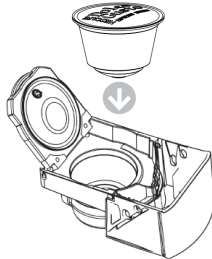


1



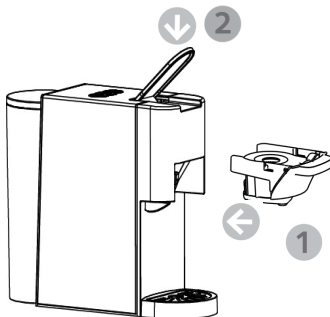
- Lift the handle.
- Pull out the tea capsule drawer for Large / Dolce Gusto capsules.

2



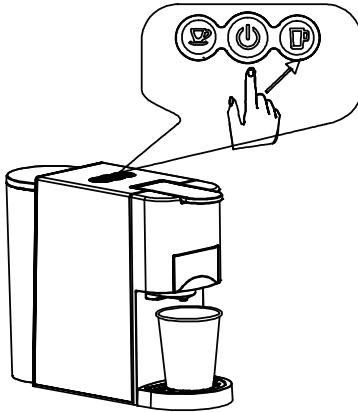
- Insert a capsule into the tea capsule drawer.

3



- Push in the tea capsule drawer with capsule.
- Push the handle down.

4



- Place a cup under the dispenser.

- Press the large cup button only once.
- The selected button will flash and the machine will start brewing. When the brewing process completes, dispensing will stop automatically when reaching the default water volume for large cup.

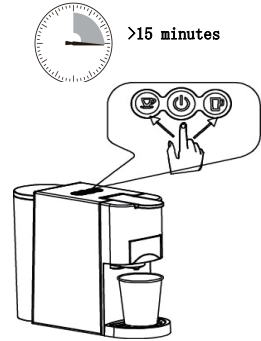
Lift the handle and pull out the tea capsule drawer to eject used capsule into the waste bin.

Tips: After pressing the button, the selected button LED may flash for a few seconds first, and then start brewing. The flashing buttons indicates heating. This is a normal process.

STANDBY MODE

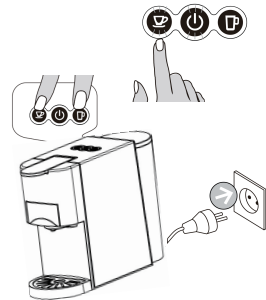
Factory default setting: Standby

- Mode:15 mins
- The machine will automatically power off after 15 minutes, and all indicator LEDs will turn off.
- Press the switch button to activate the Standby mode again if the machine is in Standby mode.



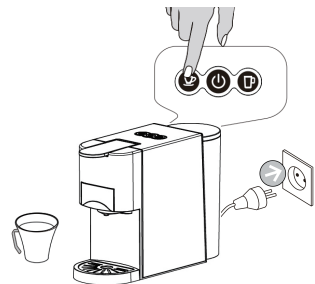
Standby mode setting

- Continuously keep pressing both the small cup button and the large cup button while inserting the plug into the power socket. The switch button light will illuminate.
- Press the small cup button, and the small cup button will turn off. Standby mode cancelled.
- Press the small cup button, and the small cup button light will turn on. Standby mode activated.



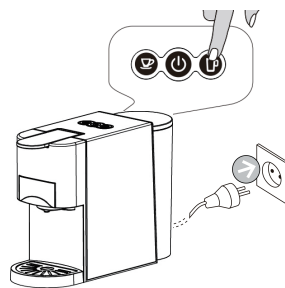
Clean mode function

1. Put a cup in front of the machine.
2. Put some detergent into the water tank
3. Press the small cup and connect the power at the same time.
4. The switch button and small cup button are lighted up. To initiate the cleaning process, press the small cup button. The cleaning process will run for 120 seconds. Press the small cup button again to stop the process.



Factory Default Setting

- Press the large cup button, and mean-while insert the plug into the power socket.
- The indicator LEDs of buttons will flash twice. It means the machine is back to the factory default setting.

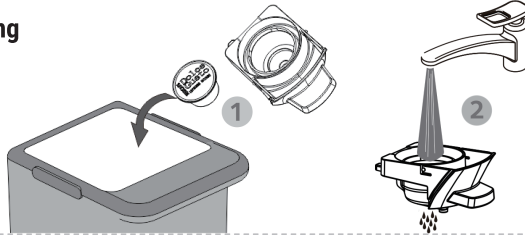


CLEANING



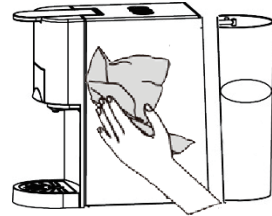
Risk of fatal electrical shock and fire. Never immerse the appliance or part of it in water. / Be sure to unplug the machine before cleaning. / Do not use any strong cleaning agent or solvent cleaner. / Do not use sharp objects, brushes or sharp abrasives. / Do not put it in a dishwasher.

Brewing cup cleaning



Machine cleaning

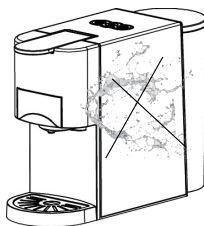
Dry with a fresh and clean towel, cloth or paper and reassemble all parts.
Clean the tea outlet and inside the machine regularly with a damp cloth.



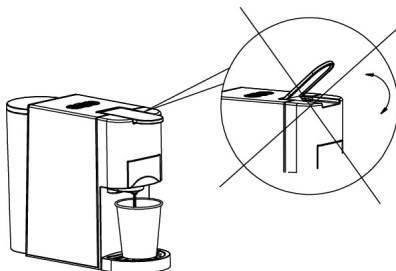
WARNING TIPS



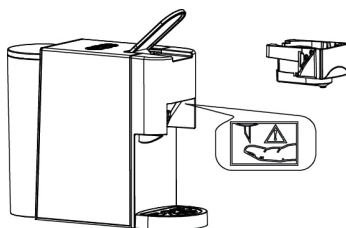
Do not splash water onto the machine.



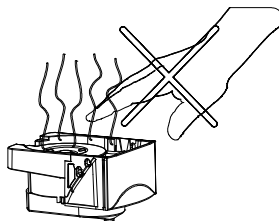
Do not lift the lever while the machine is in the brewing process.



Do not put the hand or finger to any part near the needle after the adaptor is removed.



Adaptor is still very hot after brewing.
Avoid touching it.



ENERGY SAVING MODE

The machine enters energy saving mode automatically once the machine is idle for 15 minutes. The LEDs of the two buttons and power indicator will be off.

To reactivate from energy saving mode, please press power button. Appliance will start warming up with flashing lights. When the buttons are light up steadily, the machine is ready to brew tea.



DECALCIFICATION

Decalcification / Maintenance

Drinking water composition can vary by region. Hard drinking water containing lime particles can deposit residues in the machine, potentially blocking the piping and causing damage. To prevent this, it is important to regularly decalcify the machine. We recommend performing decalcification after making approximately 300 to 400 cups of tea, or if the output significantly decreases, or at least once every one or two months. Decalcification must be done correctly to prevent damage, so it is essential to follow these instructions.

Important:

- Never clean the machine with vinegar. This causes damage and makes your tea taste bad.
- Damage caused by incorrect decalcification or failure to decalcify is not covered by the warranty.
- Caution: beware of hot water!

Recommendation:

1. Purchase commercially available decalcifier (decalcifying liquid), diluted according to the manufacturer's instructions; pour the mixture in the water tank.
2. Make sure there is no capsule inside the machine.
3. Place a large cup under the dispensing head to collect the decalcifying solution and lime residues.
4. Fill the water tank with water to maximum level mixed with decalcifying solution, make sure the solution is dissolved completely.
5. Press the large cup button to run decalcifying solution as you brew tea normally. Repeat for several times to run out the entire tank water.
6. Repeat the process to run another tanks of water mixed with decalcifying solution.
7. Repeat the process to flush out the internal piping with a tank of fresh water (without the decalcifying solution) to clean the internal piping completely.

TROUBLESHOOTING

PROBLEM	CAUSE	SOLUTION
No tea is brewed.	The water tank is empty.	Fill water in the water tank.
The tea is not hot enough.	<ul style="list-style-type: none">• The cold cups / mugs.• Scale build-up in machine• Cold machine.	<ul style="list-style-type: none">• Preheat cup / mug.• Descale.• For cold machine, brewing a cup of water to warm up the pipping.
Water on table	<ul style="list-style-type: none">• Water tank is leaking.• Drip tray is full of water.	<ul style="list-style-type: none">• Check if the valve on water tank is stuck.• Empty the drip tray.
Handle cannot close	<ul style="list-style-type: none">• The tea capsule drawer is not placed well	<ul style="list-style-type: none">• Push the tea capsule drawer into correct position



TECHNICAL DATA

Rated Voltage:	230V AC
Rated Frequency:	50/60Hz
Rated Power:	1450W
N.W./G.W.:	2.5/3.4 kg appr.
Pump Pressure:	Max. 19 Bars
Water Tank Capacity:	0.8L
Size:	110mm(W) x 315mm(L) x 250mm(H)
Protection Class:	I

Design or execution changes are reserved in the interest of technical progress.



Correct Disposal of this product.

This marking indicates that this product should not be disposed with other household wastes throughout the EU. To prevent possible harm to the environment or human health from uncontrolled waste disposal, recycle it responsibly to promote the sustainable reuse of material resources. To return your used device, please use the return and collection systems or contact the retailer where the product was purchased. They can take this product for environmental safe recycling.



IMPERIAL GALLERY LIMITED
官茶坊有限公司

Office 511, 5/F, Tower 1, Silvercord, No.30 Canton Road, Kowloon, Hong Kong
香港尖沙咀廣東道30號新港中心第一座5樓511室

Made in China
中國製造

 www.teachateau.com

©IMPERIAL GALLERY LIMITED, 2023