



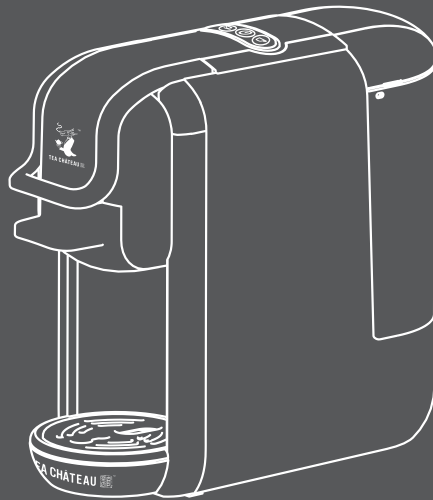
# TEA CHÂTEAU



---

## MULTIFUNCTIONAL TEA CAPSULE MACHINE

---



Model: AC-514K

Please read this Instruction Manual and the safety instructions before operating the appliance!  
Congratulation on your purchase!

This Multifunctional Tea Capsule Machine is manufactured with the greatest care. If you look it after properly it will reward you with many years of good service. Before using your new machine, please read this operating manual carefully, paying particular attention to the safety precautions.

# Content

1. Safety precautions
2. Notes on this operating manual
3. Unpacking
4. Starting up
5. Overview of machine parts and controls
6. Before using for the first time
  - Filling/refilling the water tank
  - Flushing out the machine/internal piping
7. Capsule type can be used
8. Standby Modec
  - Factory Default setting: Standby
  - Standby mode setting
  - Clean mode function
  - Tea Volume Setting
  - Factory default setting
9. Cleaning
10. Energy saving mode
11. Decalcification
12. Troubleshooting
13. Technical data



# 1. Safety precautions

**Please take time to read these safety precautions carefully before connecting your machine to the power supply. It is essential to follow them and the operating instructions.**

- First read this entire operating manual.
- Danger of electric shock! Never immerse the machine in water or any other liquid.
- Connect only to a properly grounded power point.
- To make sure that the machine is switched off, remove the plug from the power point.
- Always pull out the power plug before:
  - \* Relocating the machine.
  - \* Cleaning or maintenance.
  - \* Long periods of disuse.
- Never clamp or run the power cable over sharp corners or edges.
- Danger of electric shock! Damaged power cables may only be replaced at the customer service centre.
- Danger of electric shock! Never touch the power plug/socket/cable or the machine with damp or wet hands. Never unplug by pulling out the power cable; always remove the plug.
- If you need an extension cable, make sure it is suitable for your machine (3-pole grounded, 1.5 mm<sup>2</sup> conductor cross-section), and lay the cable to avoid tripping.
- Danger of scalding! Never move the machine during operation!
- Never operate the machine without water
- Always make sure there is water in water tank not less than minimum level.
- Danger of burning! Never touch very hot parts of the machine (e.g. brew unit during operations).
- Danger of scalding! Do not touch the steam or water jets.
- Danger of scalding! Do not move the operating lever when the machine is still under pressure making tea .
- Do not use the machine in case of:
  - \* Faulty operation.
  - \* Damaged power cable.
  - \* After falling or other damage.
  - \* In such cases immediately have the machine checked and repaired if necessary at the customer service centre.
- The machine location must meet the following requirements:
  - \* Choose a dry, stable and level support surface not immediately underneath the power point.

at least 60 cm away from the washbasin and taps.

\*Never place on flammable/fusible surfaces or equipment.

\* Never place the machine or power cable on or nearer than 50 cm to hot surfaces or open flames.

\* Never cover the machine during operation.

- Keep children away from the machine during operation.
- Only use the machine in dry rooms.
- Danger of tripping! Do not let the power cable hang down.
- This machine is only intended for household use.
- Pull out the power plug and allow the machine to cool down completely before cleaning and or Maintenance.
- To prevent damage, never use replacement parts or accessories not recommended by the manufacturer

This appliance can be used by children aged from 8 years and above if they have been given supervision or instruction concerning use of the appliance in a safe way and if they understand the hazards involved. Cleaning and user maintenance shall not be made by children unless they are older than 8 and supervised. Keep the appliance and its cord out of reach of children aged less than 8 years.

Appliances can be used by persons with reduced physical, sensory or mental capabilities or lack of experience and knowledge if they have been given supervision or instruction concerning use of the appliance in a safe way and understand the hazards involved.

Children shall not play with the appliance.

This appliance is not intended for use by persons (including children) with reduced physical, sensory or mental capabilities, or lack of experience and knowledge, unless they have been given supervision or instruction concerning use of the appliance by a person responsible for their safety.

Children should be supervised to ensure that they do not play with the appliance.

If the supply cord is damaged, it must be replaced by the manufacturer, its service agent or similarly qualified persons in order to avoid a hazard.

This appliance is for household and indoor use only.

The appliance must not be immersed

Caution! There is potential injury from misuse.

Heating element surface is subject to residual heat after use.

tea-maker shall not be placed in a cabinet when in use

cleaning and user maintenance shall not be made by children without supervisor



This appliance is intended to be used in household and similar applications such as:

- \* Staff kitchen areas in shops, offices and other working environments;
- \* Farm houses;
- \* By clients in hotels, motels and other residential type environments;
- \* Bed and breakfast type environments.

## 2. Notes on this operating manual

This operating manual cannot cover all possible circumstances. For further information or in case of problems not adequately covered in this operating manual, please contact the service and sales centre.

**Please keep this operating manual safe and pass it on to the next user.**

## 3. Unpacking

- Remove your espresso Capsule tea machine from its packaging.
- After unpacking, please check that the following parts are included:
  1. Water tank
  2. Tea machine
  3. Manual

**Note:**

- Check that your home power supply voltage is the same as marked on the machine rating plate
- Destroy all the plastic bags to prevent danger to children!

**Tip:** Keep the packaging for transporting the machine (e.g. for removals, servicing, etc.)

**Note:**

You may find a little water remaining in the machine.

In order to ensure that this machine works perfectly, it was tested with water before leaving the factory.

- DANGER OF FROST

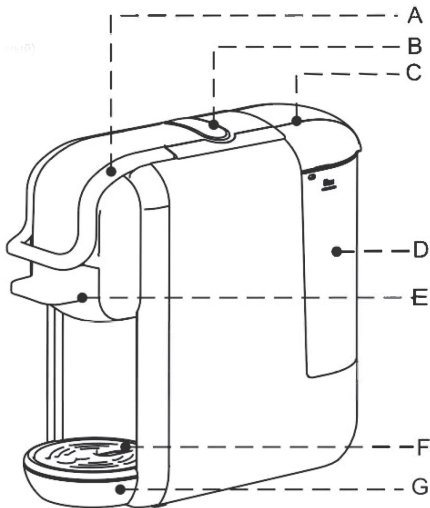
## 4. Starting up

### Before using for the first time

Caution: Improper handling of electrical equipment is dangerous and can be lethal. Please pay attention to the safety precautions in this manual, in particular the following:

- Danger of scalding: beware of hot water!
- Do not operate the machine with an empty water tank or water is less than MINIMUM level.
- Do not open the handle when the machine is brewing.
- Always pull out the power plug before cleaning the machine.
- Only use the machine in a dry room.
- Thoroughly rinse out the water tank with fresh water before using for the first time. Clean the Capsule tea machine using a damp cloth only.

## 5. Overview of machine parts and controls



No.	Name
A	Handle
B	Buttons
C	Water tank cover
D	Water tank
E	Brewing basket
F	Drip tray cover
G	Drip tray (removable)

## 6. Before using for the first time

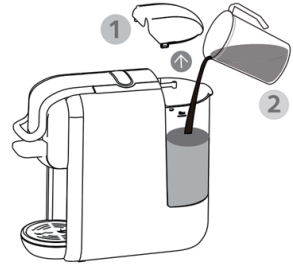
Before using for the first time or after long pauses (e.g. holidays) the machine must be flushed out. This short procedure can flush out and cleans the internal piping thoroughly.

There are two ways to fill the water tank: directly into the machine, by using for example a jug, or by removing the water .

There are two ways to fill the water tank: directly into the machine, by using for example a jug, or by removing the water tank

### 1 Filling without removing the tank

- raise the water tank cover
- Fill the tank with cold fresh water (the maximum temperature of the water is 35 °C)
- the maximum capacity is 0.6 litre
- low down the tank cover

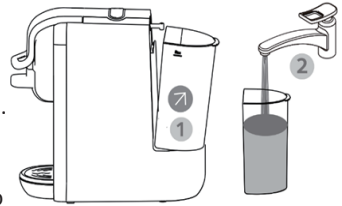


### 2 Filling by removing the water tank

-Hold the water grip at tilting angle as shown in direction to remove the water tank from the machine.

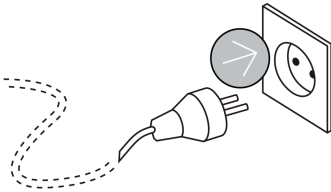
Fill the tank up to the "MAX" mark with cold fresh water (the maximum capacity is 0.6 liter).

-Slide the water tank slowly on water tank base, when the water tank outlet is inserted in the inlet receptacle, pushing firmly on the water grip as shown in direction to lock the water tank .



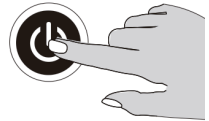
### 3

Connect the power supply

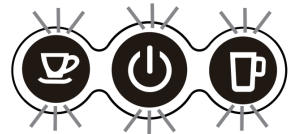


### 4

Press the switch button



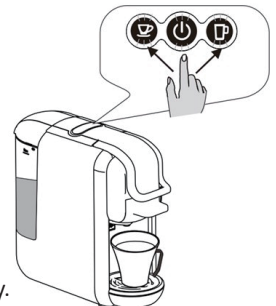
The lights at buttons become steady when the machine is heated up heating up time is 45 seconds



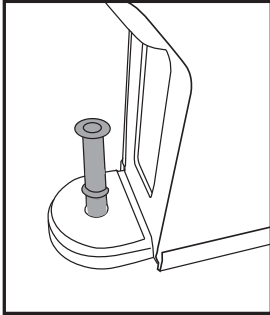
### 5

Press the lungo tea button, wait for the appliance to complete the flush out.

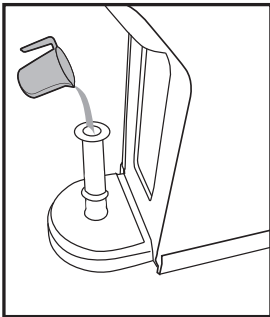
- Before pressing the button, make sure that:
  - the handle is closed **without** capsule inside.
  - the water tank is full.
  - the water tank is firmly in place, otherwise water may leak
  - a large bowl ( 250ml size or above) is placed under the dispenser. press the lungo tea button to start flush out.
  - Open the handle when the flush out process stopped automatically.
  - Empty the cup.
- flush out cycle is finished.



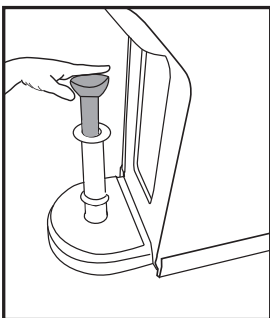
Before using for the first time or after long pauses (e.g. holidays) the machine may be difficult to pump water, this short procedure can help pump to self priming by using the pipe to fill water into the circuit manually prior to turn on the machine for first refill.



*Step 1# :*  
insert the pipe into the water entrance.



*Step 2# :*  
fill water into the pipe.



*Step 3# :*  
inject the water from pipe into the machine so that the internal circuit is filled with water.

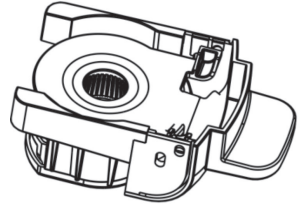
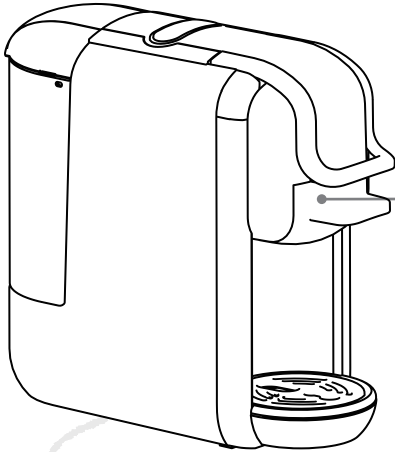
After above steps, the machine will be able to pump water out normally.

\* If necessary, repeat the steps for 2 or 3 times.

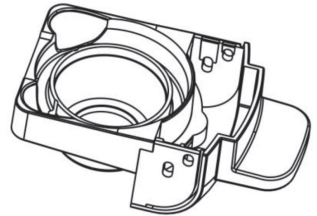
## 7. Capsule type can be used



**Tips: The machines has different adaptor for different capsules, details refer to below**



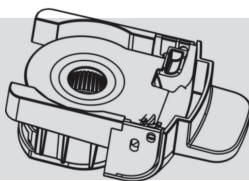
For Small / Nespresso capsules



For Large / Dolce Gusto capsules



## For Nespresso capsules

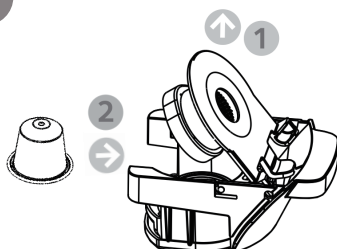


1



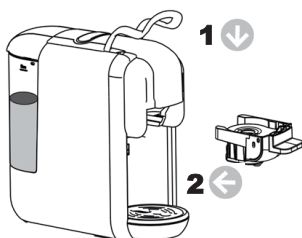
- Open the handle
- Pull out the brewing basket for Nespresso capsules.

2



- Press the brewing basket cover lid
- Insert a capsule to the brewing basket.

3



- Push in the brewing basket with capsule.
- Close the handle.

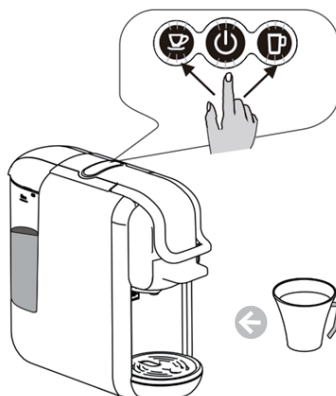
4

### Place a cup under the dispenser

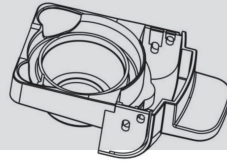
- Press the desired tea button only once
- The selected button will blink and the machine will start brewing then complete the brewing process, dispensing will stop automatically when reaching the default brewing time (26s for short espresso, 29s lungo tea), default setting can be programmed, please refer to "how to program brewing time" instruction.

Raise the handle and pull out the brewing basket to inject used capsule into the container.

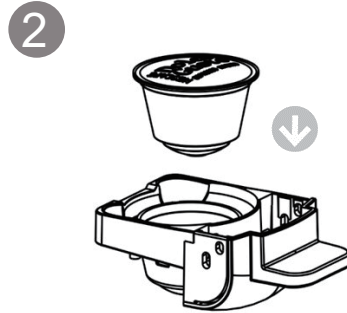
Tips: when press the button, maybe the desired button LED flash a few seconds first, then start brewing. the flash process is for heating, this is normal performance.



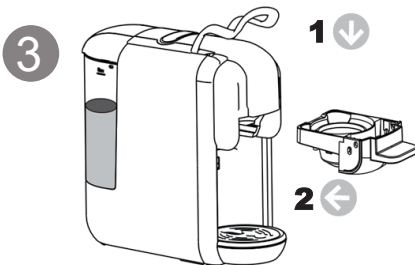
## For Dolce-Gusto capsules



- Open the handle
- Pull out the brewing basket for Dolce-Gusto capsules



- Insert a capsule to the brewing basket.



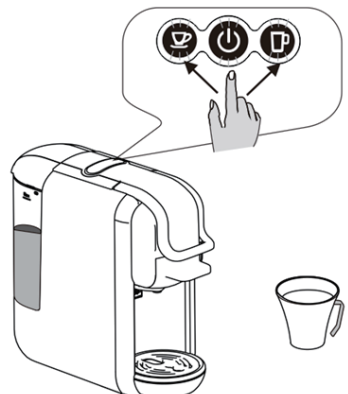
- Push in the brewing basket with capsule.
- Close the handle.

## 4 Place a cup under the dispenser

- Press the desired tea button only once
- The selected button will blink and the machine will start brewing then complete the brewing process, dispensing will stop automatically when reaching the default brewing time (26s for short espresso, 29s lungo tea), default setting can be programmed, please refer to "how to program brewing time" instruction.

Raise the handle and pull out the brewing basket to inject used capsule into the container.

Tips: when press the button, maybe the desired button LED flash a few seconds first, then start brewing. the flash process is for heating, this is normal performance.



## 8. Standby Modecking



### Factory Default setting: Standby

Mode:15 mins

It means the machine will be turn off after 15 mins, and all the indicator lights will be off.

To press the switch button to activate the standby mode again if the machine is in Standby mode



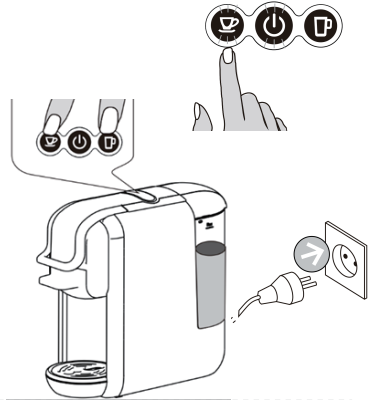
### Standby mode setting:

Keep pressing the small cup button and big cup button, insert the plug to the socket .

Switch button light will be on

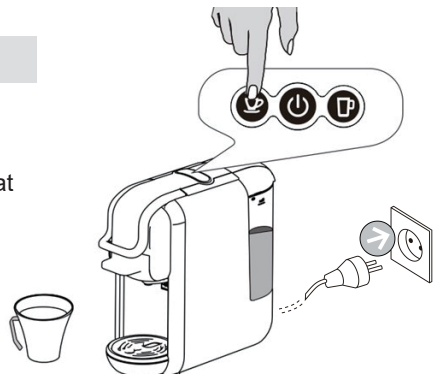
Press small cup button, Small cup button light off, Standby mode cancelled.

Press small cup button, small cup button light on, standby mode activated



### Clean mode function

1. Put a cup in front of the machine
2. Put some detergent into the water tank
3. Press the small cup and connect the power at the same time power at the same time
4. The switch button and small cup button are lighted, press the small cup button Start to clean, work time 120S.Press the small cup button to stop.

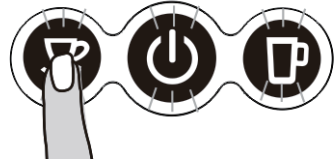




## Tea Volume Setting

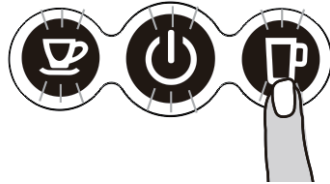
### Small Cup volume setting

1. Put tea cup under the tea outlet.
2. The machine is in normal working condition. Keep pressing the small cup button, then release the button till you get the tea you want (Min:15S,Max:90S)



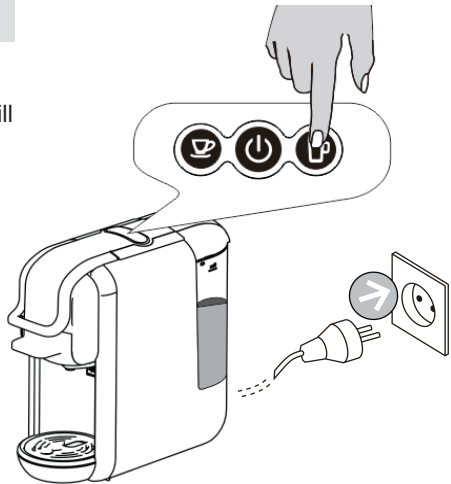
### Big Cup volume setting

1. Put tea cup under the tea outlet
2. The machine is in normal working condition. Keep pressing the big cup button, the release the button till you get the tea you want (Min:15S,Max: 90S)



### Factory default setting

Press the big cup button, insert The plug to the socket. The Indicator light of buttons will Flash twice. It means the machine Come back to factory default setting



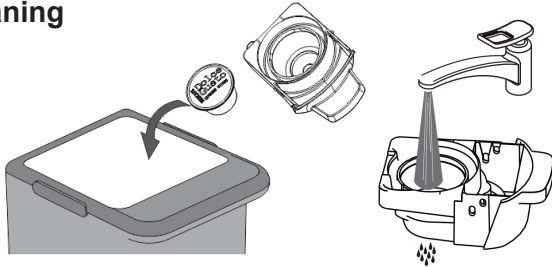
## 9. Cleaning



Risk of fatal electrical shock and fire. Never immerse the appliance or part of it in water.

- / Be sure to unplug the machine before cleaning.
- / Do not use any strong cleaning agent or solvent cleaner.
- / Do not use sharp objects, brushes or sharp abrasives.
- / Do not place in a dishwasher.

### Brewing cup cleaning



### Holistic cleaning

Dry with a fresh and clean towel, cloth or paper and reassemble all parts.

Clean the tea outlet and inside the machine regularly with a damp cloth.



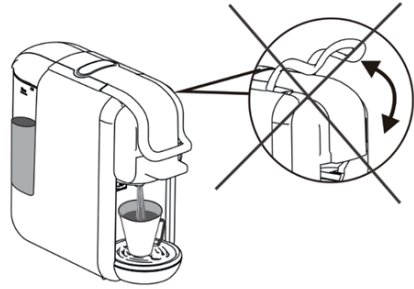
### Warning tips



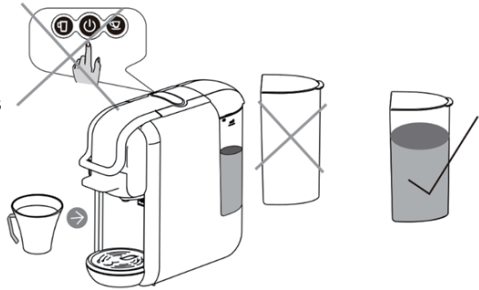
Prohibit to pull water to the machine



Prohibit to open the handle when brewing.

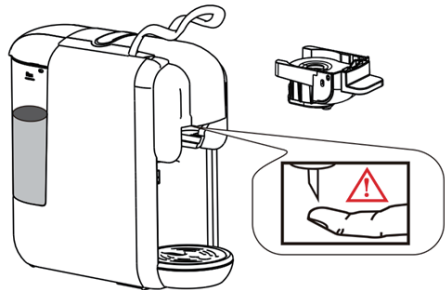


Before brewing, to be sure there is not less 20ml water keep in the water tank.

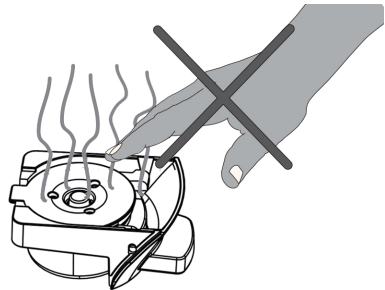


There is sharp needle upper the capsuleAdaptor.

Prohibit to put the hand or Finger to any part near the needleAfter the adaptor is removed.



Adaptor is still very hot after brewing  
Be careful the HOT!



## 10. Energy saving mode

The machine enters energy saving model automatically once the machine is idle for 15 minutes, the back light of two buttons and power indicator will off.

to quite energy saving mode, please press power button , appliance will start to warming up with lights blinking, when the buttons are lit steadily, the machine is ready to brew tea.

## 11. Decalcification

### Decalcification / Maintenance

Drinking water varies according to region. The lime particles in hard drinking water are deposited as residues in the machine and can block the piping and cause damage. To prevent this, be sure to decalcify the machine at the very least after making 300 to 400 cups of tea or, in any case if the output falls significantly or, after one or two months.

Decalcification must be done correctly to prevent damage. So it is essential to follow these instructions.

#### Important:

- Never clean the machine with vinegar. This causes damage and makes your tea taste bad.
  - Damage caused by incorrect decalcification or failure to decalcify is not covered by the guarantee.
  - Caution: beware of hot water!
1. Recommendations: purchase commercially available decalcifier (decalcifying liquid), diluted according to the manufacturer's instructions; pour the mixture in the water tank.
  2. Make sure there is without capsule inside the machine.
  3. Place a large bowl under the dispensing head to collect the decalcification diluted and lime residues
  4. Fill the water tank with water to maximum level mixed with decalcifying solution, make sure the solution is dissolved completely.
  5. Press the lungo button to run decalcifying water as you brew tea normally, repeat for several times to run out the entire tank water.
  6. Repeat the process to run another tanks of water mixed with decalcifying solution.
  7. Repeat the process to Flush out the intern circuit with a tank of fresh water (without the decalcifying solution) to clean the internal circuit completely.

## 12. Troubleshooting

PROBLEM	CAUSE	SOLUTION
No tea is brewed.	The water tank is empty.	Fill water in the water tank.
The tea is not hot enough.	<ul style="list-style-type: none"><li>- the Cold cups / mugs.</li><li>- Scale build-up in machine.</li><li>- Cold machine.</li></ul>	<ul style="list-style-type: none"><li>Preheat cup / mug.</li><li>- Descale.</li><li>- For cold machine, brewing a cup of water to warm up the circuit.</li></ul>
Water on table	<ul style="list-style-type: none"><li>- Water tank is leaking.</li><li>- drip tray is full of water.</li></ul>	<ul style="list-style-type: none"><li>- Check if the valve on water tank is stuck.</li><li>- empty the drip tray.</li></ul>
Handle can not close	<ul style="list-style-type: none"><li>- the brewing basket is not placed well</li></ul>	<ul style="list-style-type: none"><li>- Push the brewing basket into correct position</li></ul>

## 13. Technical data

Rated Voltage:	220-240V AC
Rated Frequency:	50/60Hz
Rated Power:	1450W
N.W./G.W.:	2.5/3.4 kg appr.
Pump Pressure:	Max. 19 Bars
Water Tank Capacity:	0.6L
Size:	110mm(W)* 270mm(L) * 250mm(H)
ProtectionClass:	I

Design or execution changes are reserved in the interest of technical progress.



### Correct Disposal of this product

This marking indicates that this product should not be disposed with other household wastes throughout the EU. To prevent possible harm to the environment or human health from uncontrolled waste disposal, recycle it responsibly to promote the sustainable reuse of material resources. To

return your used device, please use the return and collection systems or contact the retailer where the product was purchased. They can take this product for environmental safe recycling.







IMPERIAL GALLERY LIMITED  
官茶坊有限公司

18 Dai Hei Street, Tai Po Industrial Estate, Tai Po, N.T  
新界大埔大埔工業邨大喜街18號

Made in China  
中國製造

 [www.teachateau.com](http://www.teachateau.com)

©IMPERIAL GALLERY LIMITED, 2021