



IMPACT REPORT

2020


9.6
million+ native
trees planted

500+
forests created

9,000
hectares revegetated

3.5
million+ tonnes of carbon
will be sequestered

GROWING
HOPE



Greenfleet acknowledges the traditional custodians of the land throughout Australia and pays respect to their Elders, past and present. In particular, we honour their deep connection to Country and pay respect to their knowledge and wisdom in caring for Country.

Our vision

To become the leading environmental organisation empowering individuals, communities and companies to take tangible, effective and long lasting environmental action, to mitigate the impacts of a changing climate, and to restore degraded ecosystems.

Our mission

To sequester carbon, in all its practical and economically viable forms, but primarily by planting biodiverse native forests in Australia and New Zealand. These carbon sequestration activities aim to reduce the detrimental impact our environment has endured, and to create a sustainable environmental future, including providing habitat for native fauna. To undertake this in such a way that our supporters and clients feel connected to the environment and are empowered to help protect and restore it, for future generations.



A transformation of our forest Battery Creek, in Gippsland Victoria (Boonwurrung country) over 20 years.



CEO's message

2020 was a year the world did not expect. In Australia, the challenges began as the devastation of the Black Summer Bushfires reverberated throughout our nation.

Combined with the upheavals of the COVID-19 pandemic, 2020 became a year that tested us all. Throughout this, one thing remained certain - the importance of maintaining and growing hope is greater than ever.

Greenfleet remained committed to our mission to protect our climate by restoring our forests. We planted hundreds of thousands of native trees across Queensland, New South Wales, Victoria and New Zealand that are legally protected for up to 100 years and will flourish for generations to come.

We began revegetating Pearson, a property in Central Victoria, in partnership with the traditional custodians of the land, the Dja Dja Wurrung and we will continue restoring the native ecosystem across this 340-hectare property over the coming years.

Greenfleet also achieved formal Climate Active Certification in 2020 verifying that all of our operations have resulted in net zero emissions.

In 2021, Greenfleet will extend our work on the ground with multiple reforestation projects already planned, including the revegetation of a Queensland property previously used for pine plantations. This project will be critical in restoring habitat for Queensland's threatened koala population.

We are thrilled to have purchased a property in South Gippsland, which we will begin revegetating over the coming years and will become an essential part of our work in soil carbon improvement. Both soil carbon and blue carbon sequestration have important roles to play in the fight against climate change and as an organisation, we look forward to continuing our exploration in these areas.

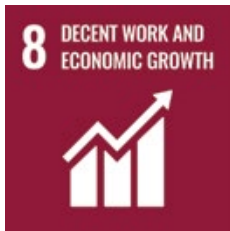
In 2021 will also see Greenfleet take a significant step on our journey of reconciliation with Aboriginal and Torres Strait Islander peoples. We end 2020 with Reconciliation Australia's conditional approval of our Reconciliation Action Plan and are thrilled to see this come to fruition over the coming months and years.

I would like to thank our Board, Business Advisory Council and Greenfleet staff for their hard work throughout the year. On behalf of the entire Greenfleet team, we say thank you for your support.

Warm regards,

Wayne Wescott
CEO, Greenfleet

Our work contributes to the United Nations Sustainable Development Goals



Promote sustained, inclusive and sustainable economic growth, full and productive employment and decent work for all

Greenfleet invests over \$1 million regionally each year, helping to stimulate regional economies by creating demand for local industries. Our work economically supports regional communities through our forestry operations. Where possible, we buy, hire and source as locally as we can, from seed collectors, earth movers, tree planters, local farmers, weed management teams and Indigenous plant nurseries.

Economic investment made in regional Australia and New Zealand helps to strengthen resilience and social cohesion. Particularly in remote regions with lower employment prospects, our demand for services is providing opportunities in training and skills development.

Investing locally also decreases the need for extensive travel when sourcing trees and services needed for our work. This is important to us from an environmental perspective and as a not-for-profit organisation, it also helps ensure that our supporter funds are delivering the best outcomes possible.

[Click to learn more > Climate action & supporting regional economies](#)



Make cities and human settlements inclusive, safe, resilient and sustainable

Since 2016, Greenfleet have been working with project partners on the community wetland restoration project along Upper Stony Creek, in Sunshine North, Victoria. The project was set out to transform a once bleak area into a natural green open space with a wetlands area for the community, with improved environmental benefits.

The newly planted trees, grasses and shrubs will grow and help transform the area into a vibrant green space for the community, as well as providing additional environmental benefits such as improved land and water quality and habitat for local wildlife. The newly updated space also includes increased connections through a network of paths and tracks around the site, encouraging the use of the space for recreation and relaxation.

Greenfleet is looking forward to seeing the local Sunshine community enjoy the new green space and continuing our work in restoring green spaces in urban environments in future with our project partners.

[Click to learn more > Upper Stony Creek transformation](#)



Take urgent action to combat climate change and its impacts

Climate change is a global issue that has impacts for everyone. Offsetting emissions with Greenfleet is a way individuals and businesses can counteract the emissions they can't reduce or avoid. Greenfleet plants biodiverse, native trees to capture those emissions from the atmosphere.

Since 1997 Greenfleet has planted more than 9.6 million native trees in over 500 forests in Australia and New Zealand, offsetting over 3.5 million tonnes of carbon dioxide equivalent (Co2-e). These trees continue to sequester carbon as they mature so protecting them for up to 100 years ensures that they take long term, critical climate action.

[Click to learn more > Climate change](#)



Protect, restore and promote sustainable use of terrestrial ecosystems, sustainably manage forests, combat desertification, and halt and reverse land degradation and halt biodiversity loss

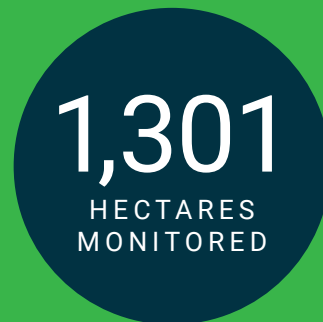
In addition to capturing carbon, Greenfleet forests build resilient ecosystems, which help restore biodiversity, create habitat for wildlife, and improve land and water quality. Importantly, the trees growing in our forests are protected for up to 100 years from the time they are planted. This ensures they can reach their full potential in providing environmental benefits.

The trees we plant are always native and endemic to the area that we are planting in. After planting, we use aerial photography (including drones and satellite imagery) as well as ongoing site visits to track the development of the new forest. If a forest needs support, we will replace or replant in another location to ensure the healthy development and carbon sequestration capability of every forest.

[Click to learn more > Biodiversity](#)

Our Impact: 2020

In 2020, Greenfleet planted native trees across **298 hectares** in Australia and New Zealand to sequester **154,233 tonnes** of carbon over their lifetime.



154,233

TONNES OF CARBON TO BE SEQUESTERED

Greenfleet planted a mix of endangered and endemic species including:

- Weeping Paperbark (*Melaleuca irbyana*)
- Coastal Banksia (*Banksia integrifolia*)
- Blakely's Red Gum (*Eucalyptus blakelyi*)
- Yellow Gum (*Eucalyptus leucoxylon*)
- Yellow Box (*Eucalyptus melliodora*)
- Grey Box (*Eucalyptus microcarpa*)
- Strzlecki Gum (*Eucalyptus strzlecki*)
- Buloke (*Allocasuarina leuhmanni*)
- Forest Red Gum (*Eucalyptus tereticornis*)
- Red Cedar (*Toona cilata*)
- Coolamon (*Syzygium moorei*)



Our 2020 Planting Projects



Anam Talamh

Bundjalung country

Located in the lush Byron Hinterland in NSW, we are revegetating this property to restore endangered rainforest species and build habitat for wildlife. Reforestation work began here in 2020 and over the coming years the goal is to have all wetland and unused parts of the property revegetated with native species.

This forest will play a vital role in taking climate action by sequestering carbon from the atmosphere and over its lifetime will capture nearly 35,000 tonnes of CO₂-e. We also anticipate that it will extend habitat for the vulnerable koalas in the region.

[Click to learn more >](#)



Coopers Crossing

Wiradjuri country

Located near Taylors Flat in NSW, our reforestation efforts at Coopers Crossing will be restoring biodiversity and helping to rebuild ecosystems. The forest will also create potential habitat for the Regent Honeyeater, a bird considered critically endangered in NSW and at a federal level.

In 2020, we planted over 7,600 native seedlings at this site with species such as Yellow Box (*Eucalyptus melliodora*), River Sheoak (*Casuarina cunninghamiana*) and Prickly Tea Tree (*Leptospermum continetale*).

Thanks to substantial rain in March 2020, this site has experienced good growth and as it grows will restore habitat, increase biodiversity and capture more than 4,200 of CO₂-e over its lifetime.

[Click to learn more >](#)



Gurrbum

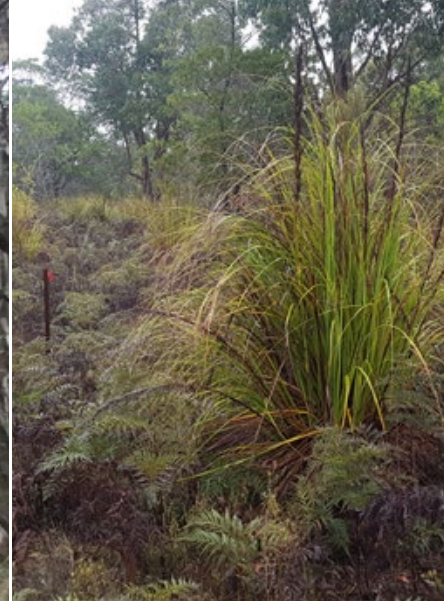
Djirbalngan country

Greenfleet has been involved in the revegetation of Gurrbum, which forms a critical linking corridor along the Walter Hill Range, between the Tully Gorge, Japoon National Parks and the Walter Hill Conservation Park in QLD.

The long-term objectives for the project are to build resilient habitat for the region's Cassowaries and establish a nature refuge. In conjunction with revegetating the National Park, the construction of a fauna land bridge across the Bruce Highway will allow cassowaries and other wildlife to move through the area safely. In 2020, evidence was found of Cassowaries already using the property.

This project is being completed in partnership with Queensland Trust for Nature, C4, Brettacorp and Terrain. Our work will continue at Gurrbum in 2021.

[Click to learn more >](#)



Koala Crossing

Yuggera country

Koala Crossing includes several adjoining properties owned by Queensland Trust for Nature (QTFN). These properties form part of the Flinders Karawatha Corridor, which is the largest remaining continuous stretch of open eucalypt forest in South East Queensland.

In partnership with QTFN, this project aims to build biodiversity and restore habitat for Queensland's threatened koala population. It will also provide habitat to the Rock Wallaby and many native birds in the region.

Since we started in 2016, more than 90,000 native trees have been planted including the Queensland Blue Gum (*Eucalyptus terticornis*), which is a preferred food source for koalas, insects and native birds

[Click to learn more >](#)



Matsubayashi Nojo

Dharug country

Matsubayashi Nojo is situated just south of Bathurst in NSW on the Central Tablelands. Previously used for sheep grazing, this property is now being revegetated to increase the productivity of the land, restore biodiversity, and capture carbon from the atmosphere.

As well as taking climate action, this forest will provide a range of long-term environmental benefits to the region including providing habitat to the critically endangered Regent Honeyeater and Swift Parrot, and endangered Booroolong Frog, Southern Brown Bandicoot and Spotted-tailed quoll.

[Click to learn more >](#)



Myamyn Wetland

Gunditjmara country

Myamyn Wetland is located near Hamilton in Western Victoria. Close to the 'Green Triangle', one of Australia's major forest regions, this Greenfleet forest borders a wetland on the same site, serving as an important extension of this threatened ecosystem.

In partnership with Cassinia Environmental, Greenfleet planted 23,000 native trees over 28 hectares in 2020 to restore the biodiversity of the site.

[Click to learn more >](#)



The New Forest

Woiworung country

The New Forest sits in the plains near the base of the magnificent Hanging Rock in VIC. Originally cleared for sheep grazing, we are now working to restore the land and its biodiversity.

Greenfleet first planted at The New Forest in 2018 and again in 2020 with a total of 4,500 native trees. Species chosen include Kangaroo Apple (*Solanum aviculare*), Manna Gum (*Eucalyptus viminalis*) and Silver Banksia (*Banksia marginata*).

Some of the trees planted in 2018 are already reaching 2 metres high and providing habitat for native birds. The forest will capture more than 1,800 tonnes of carbon from the atmosphere over its lifetime.

[Click to learn more >](#)



Pearson

Djadjawurung country

Pearson is a 340-hectare property in central Victoria that forms part of the Wychitella biolink. We are working with the Traditional Owners, the Dja Dja Wurrung to revegetate the property with native trees and create a vital vegetation link across the land.

Some of the native species we've planted so far include Yellow Box (*Eucalyptus melliodora*), Varnish Wattle (*Acacia verniciflua*) and Sweet Bursaria (*Bursaria spinosa*). In 2021, additional parts of the property will be planted out with native Kangaroo Grass (*Themeda triandra*) and Yam Daisy (*Myrnong*).

Restoration of this ecosystem will create habitat for the local wildlife species, including Lace Monitors, Quolls, Shy Heathwrens, Inland Thornbills, and the vulnerable Mallee Fowl.

[Click to learn more >](#)



Reedy Creek

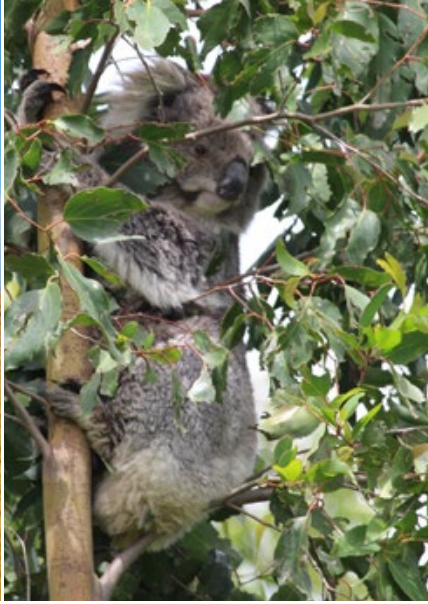
Dharug country

Located South West of Sydney in NSW, Reedy Creek is a property being revegetated to deliver climate action and increase the productivity of the farm.

In 2020, we planted more than 23,000 native trees across the property, which are growing well thanks to substantial rain earlier in the year. A variety of native species were planted including Apple Bark (*Eucalyptus bridgesiana*), Blackwood (*Acacia melanoxylon*) and Woolly Tea Tree (*Leptospermum lanigerium*).

As this forest grows, it is providing a wealth of environmental benefits including capturing carbon from the atmosphere. Over its lifetime, it will capture more than 41,000 tonnes of CO₂-e, which is enough to offset over 9,500 cars for a whole year.

[Click to learn more >](#)



Te Muri

Puhoi, New Zealand

Located on New Zealand's North Island, Greenfleet first planted at Te Muri in 2016. Our focus was on restoring the Pohutukawa-puriri-karaka broad leaved forest, a type of forest severely reduced due to land clearing and which is listed as critically endangered by the International Union for Conservation of Nature.

The revegetation work at this site plays a vital role in restoring and preserving the unique biodiversity of this ecosystem and will improve water quality in the area as it flows into the Puhoi River.

The vulnerable Northern New Zealand Dotterels and Variable Oystercatcher are among the many species of native wildlife that find shelter in the remnant vegetation of this area and by extending the forest, this project will help create habitat for endangered wildlife.

[Click to learn more >](#)



Wurneet Laang Laang

Boonwurrung country

Wurneet Laang Laang is a 66-hectare property owned by Greenfleet in South Gippsland, VIC. Since 2016 we have planted more than 60,000 native trees across the property located at the head of the Lang Lang River.

More than 20 different native species have been planted at this property, including the Stzeleckii Gum (*Eucalyptus strzeleckii*) and Silver Wattle (*Acacia dealbata*). Some of the trees planted in 2016 are already growing over 8 metres tall and the site is playing a critical role in restoring biodiversity and building habitat for our native wildlife.

In 2019, Stzrezlecki Koalas were found already living in the trees on the property. The trees are also creating habitat and sources of food for a wealth of native birds on the property.

[Click to learn more >](#)



Upcoming Projects



Aroona

Yuggera country

One-and-a-half hours west of Brisbane QLD, you'll find Aroona where Greenfleet's work highlights the possibility for interplay between natural values and agriculture. As a working cattle station Aroona presents an opportunity to demonstrate that fauna and flora conservation can co-exist with cattle grazing.

In partnership with Queensland Trust for Nature, Greenfleet's revegetation efforts on this site aim to increase habitat for many native species including Koalas, Glossy Black Cockatoos, Brush-tailed Wallabies, and Brush-tailed Phascogales.

In 2021, Greenfleet plans on conducting aerial seeding using drones in combination with a prescribed cultural burn to stimulate germination of both seeding areas and existing seed banks. This process will also reduce weeds and stimulate new growth of existing vegetation by improving vegetative health and function.



Dangerbridge

Gubbi Gubbi (Kabi Kabi) country

Dangerbridge is located north of Noosa QLD and is boarded by the Cooloola National Park, Kin Kin Creek and remnant Sub-tropical Lowland Rainforest, which is listed on Environmental Protection and Biodiversity Conservation Act.

By re-establishing the original ecosystem across the remainder of the property, this project will provide further habitat for the recovering koala population and helping to extend a nature refuge. The native species planted will provide prime koala food and tree diversity.

Dangerbridge is the main release site for captive bred Richmond Birdwing Butterflies. Plans are also being developed to use the site for formal species recovery actions for the Coxen's Fig Parrot and the threatened plant species Keys Boronia (*Boronia keysii*).



Greentrees

Bundjalung country

Greenfleet is establishing a forest on the floodplain of the Wilson River in NSW where there has been extensive land clearing. Our work will support the expansion and sustainability of a key breeding koala population, and improve connectivity between existing koala populations on the Pelican Flood Reserve and an adjoining quarry Koala Reserve.

Also within the region is the Coastal Swamp Oak which is listed under the Environmental Protection and Biodiversity Conservation Act as a threatened ecological community.

Planting will consist of locally native trees appropriate to the ecological community. These include several trees species that are key sources of food for koalas. Our hope is that the forest planted will help provide additional habitat for the prolific and expanding koala population in the area.

[Click here to learn more about our upcoming reforestation projects >](#)

Our Partners

Greenfleet would like to thank the thousands of individuals, families, community organisations, universities, councils, businesses, and government agencies who are taking practical climate action with us.

Please contact us for further information and a simple proposal based on your business needs.

Email partnerships@greenfleet.com.au or phone (+61 3) 9642 0570

Thank you to our corporate supporters who contributed in 2020.

(including 254 new supporters)

1medical	Beacon Ecological	Clarity CA
1st Street	Beginning Boutique	Clifton Street
A1 Waste Management	Bendigo Bank	Children's Centre
Apex Constructions	Benedict Industries	Coffee With Mates
Abco Products	Beyond Essential Systems	Colac Otway Shire
Abicus	Big Duck Boat Tours	Competitive Pest Services
About Sight	biglittlthings studio	Computershare
ACIL Allen Consulting	Bike n' Blend	Consolidated Power
Adamantem Capital	Biodynamic Wellbeing	Projects Australia
AdAudio	BioPak	Corangamite Catchment
Adopt and Embrace	Bisshop Systems	Management Authority
Affinity Shop	Blac Sneaker Co	Corp Centre Sydney East
After Dark Logistics	Blue Wren Vintage	Cotton Sheets
Akimbo Architecture	Bonza Brewing	Country Food Trails
Alchemus	Boomerang Bags	CPB Contractors
Alken Automotive Globes	Redland City	Cromwell Operations
AllezBaby	Botany Florist Melbourne	Currie Communications
Allied Automotive	Brandee Meier	Custom Fleet
Amanda Jayne Doyle - Celebrant	Photography	Dahms Technik
AMENITY urban & natural environments	Brave New Eco	Daily Blooms
Amity Alice	BRD Studio	Daniel Tran Photography
Angeluve	Breathe Architecture	Dashing
anthrosite	brochures dm	Dawn Wade Foundation
Anton Hartley Colour	Brookfield	Daylesford & Hepburn
City Painting	Brown Brothers Waste	Mineral Springs Co
APAC BGIS	Contractors	Dear Henri
Apiary Blinds	Bunnings	Del Villar Studios
Applied Civil & Water	Buro North	Department of Justice
Aria Health	Business Fuel Cards	DIB Australia
ARK Testing	Campaign Incentives	Digicall Assist
Arken Built	Campbell Constructions	Digital Women's Network
Arnhem Clothing	Canva	DiMase Architects
Art Processors	Capire Consulting Group	Dingo's Fraser Tours
ASN Events	Capital Transport Group	Dinner Pal
Assemble Agency	Car Next Door	Dionysus
Atma Environmental	Caraniche	Discovery Fraser Tours
ATSYS	Caravan Pictures	DKP Accountants
Attunga & Lawson	Cardinia Shire Council	DMA Creative
Aulieude	Cardlink Systems	DNX Energy
Auspicious Arts	Carecom Solutions	Donald Fraser Family Fund
Projects Inc.	Castlepoint Systems	Downes
Aussie Chook Supplies	CCMDC	Dr John Endacott
Austin Health - ARMC	Chacon the Conscious	Drop of Good
Australian Art Orchestra	Cat Store	Dux Digital
Australian Brands Alliance	Chaffey Power	Eastern Commercial
Australian Greens	Chapman Consulting	Furniture
Australian Museum	Charm Offensive Tees	EBOS Group Limited
Australian Traveller Media	CHE Proximity	ecoDesign ecoPrint
AVI	Cherub Baby	Ecoprint Supplies
Award Force	Churches of Christ in Queensland	Ecotan
Bambii and Co	Citipower and	Ecoteam
Banyule City Council	Powercor Aust	Eggpicnic
Bapcor	City Of Boroondara	Eighteen Thousand Islands
Bassike	City Of Casey	Elaeocarpus
Batch Brewing Company	City of Parramatta	ElectraNet
Bauen Projects WA	City of Whittlesea	Elmarc Design
	Clare Valley Luxury Tours	Etham Farmers Market
		Emily K Creative

Energy Design Solutions	Indigenous Design	Moko Creative	Resource Recovery	Tintuppa Landscapes
Engage consulting group	Environmental Management	Monash University	Gippsland	Tirtly Trading
ENGE0 (Australia)	Innovdev	Montgomery Homes	RGB Assurance	Tony Luu
enstruct group	Integra Law	Morris Family Foundation	Rhysco Electrical Services	Tour Gold Coast
EnviroRisk Management	Interleasing	Moto Cartel	Rocket Digital Agency	Toyota Fleet Management
EPURON	Inzenius	Mount Eliza Wholefoods	SA Government	Toyota Tsusho (Australasia)
Ethical Gallery	ITSD	Movemetica	Salesforce AppExchange	TravelBoecker Adventures
Europcar	Jacks Five Foundation	MS Wood Custom	Sam Cox Landscape	Travis Schultz and Partners
Evergreen Lab	Jade Cantwell	Woodwork	SAMSON Control	Tribit
Evolve	Jade Distribution	Mudgeeraba Optical	Save The Children Australia	Trinity College
Explore Australia Tours	Jens Alzheimer	Mulline Vintners	School of Embodied Arts	True Blue Plumbing Australia
Eye For Detail	JJ Coleman Plumbing	Myrtle and Pepper Fine Chocolate	SCT Consulting	Tune into Plants
Farm Fresh Organics (QLD)	John Gardiner Rover Crew	Nash Timbers	Serenus	Twizzle Designs
Farm to Hanger	Just Sort It Out	Natural Area Services	Servcorp	Ultimate Security Australia
FAST Aviation	k20 architecture	Natural Selection Group	Serversaurus	United Energy Distribution
FELM Earthcare	Kaizen Recruitment	Natural Well	SHAPE Australia	United for Good
Ferguson Plarre	Kaleidoscope Architecture Studio	Neuron Mobility	Shared Space Architecture	University Of Melbourne
Bakehouses	Kaleidoscope Science	New Leaf Arboriculture	Shoal Group	University of South Australia
Fiftieth Peso	Karras Partners Lawyers	Next Facilities Group	Shoshin Matcha	University of Wollongong
FIP Holdings	Kate Morgan Celebrant	Niche Environment and Heritage	Simon Andrewartha	Urakawa Jenkins Architecture
Firetrail Investments	Kellys Beach Resort	NLC	Sinead Buckney	UrbanFarm
FishListic	Kent Relocation Group	Nord Modern	S-kin Studio Jewelry	Vanlife
Flightless Records	Kids and Teens Psychology	Nordic Blinds	Smartgroup	Veitch Lister Consulting Pty Ltd
Flora and Fauna	Kings Transport	Norman Disney & Young	Snap Preston	VerdeLife
Floragraphica	Knight Frank Australia	Northmost	Sommar Pty Ltd	WA Machinery Hire & Sales
Food of Tomorrow	Kookaburra Coaches	Northside Studio	South Eastern Program Alliance	Waldie Family Discretionary Trust
Forza Capital	Kosciuszko Thredbo	Nous Group	Southern Exposure	Where to Research
Frankston Mazda	La Biosthetique Australia	Novorail	Southern IML Pathology	Wild Adventures Melbourne
Fraser Dingo 4wd Hire Pty Ltd	Lady Elliot Island	Noxon Architecture	Southern Secrets	Wildlife Drones
frc environmental	Laing O'Rourke Australia	NSW Automotive	Sovori	William Grant & Sons
Fresenius Kabi Australia	Lakehouse Capital	Ntegrity Agency	Spa World	WISE Employment
frontside digital	Landcom	OK&CO.	Spacechameleon	Wolf Washroom Products
Furtado Sullivan	Landserv	Olaver Architecture	Adventure Co	Wolgan Valley Eco Tours
Future Neutral	Larki	One Planet	Spectrum Natural Family Healthcare	Woven Image
Gearon Civil	Leenders Cottier Architects	OOB Productions	Styelle Swim	Wraptie Int.
Ginger & Smart	Like Butter	Ovens Street Bakery	Swell Building Group	XPower
Glennerator Electrical	Lime and Dandelion	Pack Raft Australia	Swinburne University	Your Wild Books
GPS Group	Little Big Learning	Pale Blue Dot	Sydney HeliTours	Yourhost I.T. Solutions
GRACE Worldwide (Australia)	LoanConsultant.au	Paywise	Sydney Opera House	Zea
Great Dane Furniture	Local Government Super	Perchalla & Turner Travel Associates	Sydney Pest Management	Zero Carbon Logistics
Green Autos	Lonsdale Solutions	Pilot Studio	Structen	
Green Door Convey	Lune Media	Pinnacle Services Administration	Styelle Swim	
Green Plumbing Solutions	Junio by Sofie	Platinum Safes	Sustainable Living Fabrics	
Greenworx	m3architecture	Pod & Parcel	Swell Building Group	
Guy Designs	Man With A Van	Poly Studio	Swinburne University	
Hairy Hounds Playground	Maribyrnong City Council	Pony Rider	Sydney HeliTours	
Hansa Investment Company	Marmalade Gardens	Port of Newcastle	Sydney Opera House	
Hanson Australia	Maroondah City Council	PR Productions	Systems Pest Management	
Happsa Group	Marsden Jacob Associates	Pride Living	Taronga Zoo	
Harry & Jane	Martin Brothers Building	Printgraphics	TASTE South Burnett	
Henry Davis York	Matilda Wilson Creative	Pure Global Logistics	TEHO	
Hero Packaging	Matthew Broughton Design	Qudos Bank	Telstra	
Hervey Bay Boat Club	MCH Holdings	Rabobank	Terra System	
Hinge Architects	Mckenzie Solid Plastering	Rag Snag	TerraFormDesign	
Hinterland	McMillan Shakespeare	Rain Consulting	Terroir	
Holy Fools Inc	MDJ Software	Rapid Contruccion	Tetris Capital	
Hoxton MPM	Medline International Two	Recycling Industries	The Bowral Doctor	
Identilab	Melbourne Coffee Project	Red Parka	The Equipment Library	
IFM Investors	Metropolitan Waste and Resource Recovery Group	Red Pony	The GPT Group	
Imaginelle Pty Ltd	Metwest Engineering	Reduction Revolution	The Graceful Bloom	
Impact Digital	MILOU MILOU	Regional Linen	The Independent Commissioner Against Corruption	
	Modus Projects	Reluv Clothing	The New Devine	
	MOIRA		The Sustainable Traveller	
			These Days Company	



Contact us

Ph: (+61 3) 9642 0570

Email: info@greenfleet.com.au

[PO Box 16011,](#)

[Collins St West, VIC 8007](#)

greenfleet.org.au

Stay in touch



Like us on Facebook for a daily dose of forest-friendly content
facebook.com/GreenfleetAustralia



Connect with our passionate network of business supporters
linkedin.com/company/greenfleet



Tag us on Twitter for news and events
twitter.com/GreenfleetAust



Follow us on Instagram for beautiful photos of our forests
instagram.com/greenfleetaustralia