

### PLA HD - HIGH DEFINITION

Definition, finish and resistance, Winkle Quality - (Raw material and a process that not only matches PLA850 in terms of properties, but even surpasses it in some aspects).



#### PROPIEDADES

Colores disponibles:



Mauve, Ash Gray, Ebony, Mahogany, Glacier White, Pacific Blue, Sky Blue, Canary yellow, Acacia, Pearl, Jet Black, Gold, Leather, Silver, Devil Red, Transparent, Avocado Green, Copper, Phosphorescent Green, Fluorescent Yellow, Fluorescent Orange, Fluorescent Pink, Fluorescent Green, Blue Interference, Red Interference, Green Interference, Pearl Violet, Particle, Winkle Purple, Nemo Orange, Mother of pearl Pink, Ecotisa Green, Banana, Turmeric, Candy Floss, Sea Foam, Green Macaron, Light Marble, Stardust, Desert Sand, Feel Blue and Glow Army.

**Available diameter:**  
1.75mm and 2.85mm

**Size of the spool:**  
300g (only in 1.75mm) and 1kg

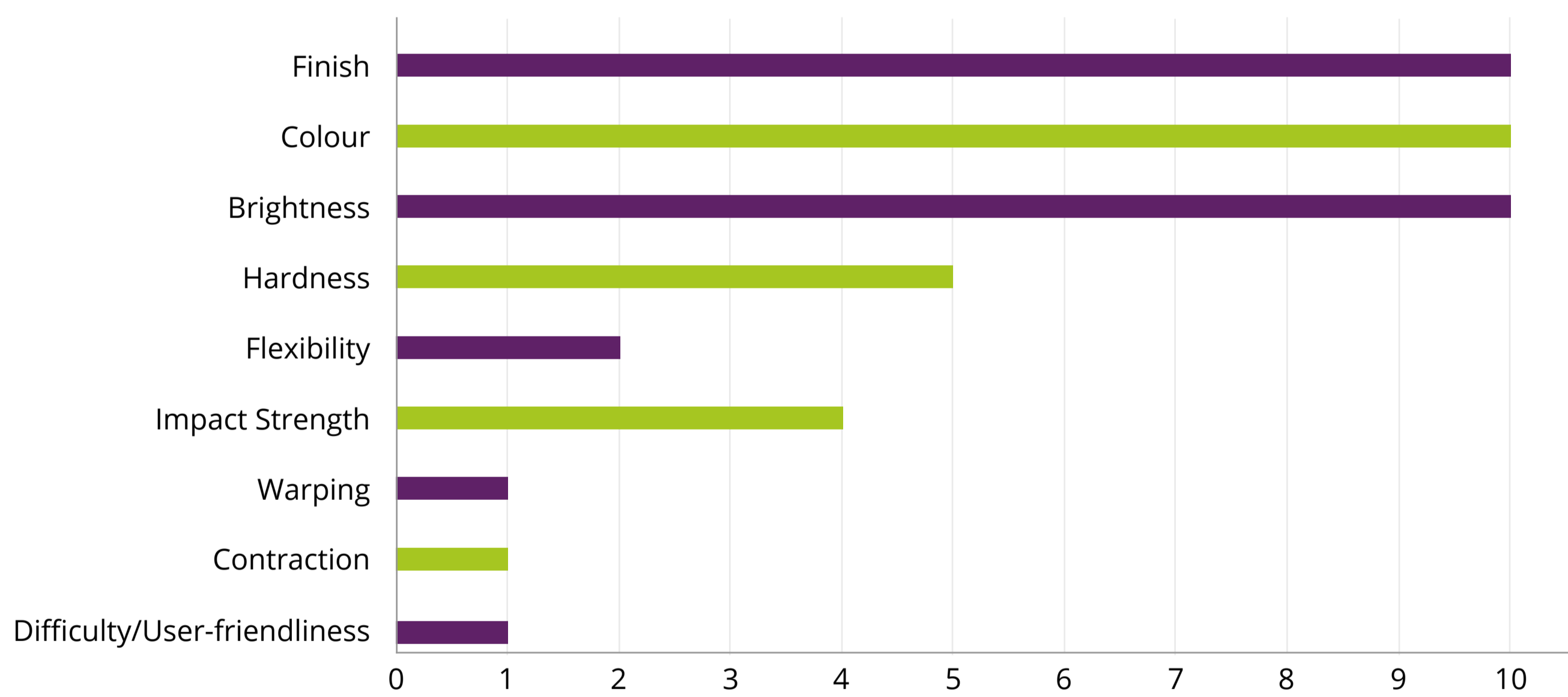
**Also available (on request):**  
3 Kg, 5 Kg and 8Kg

#### GENERAL PRINT SETTINGS:

**Nozzle Temperature:**  
Between 190° and 230°C

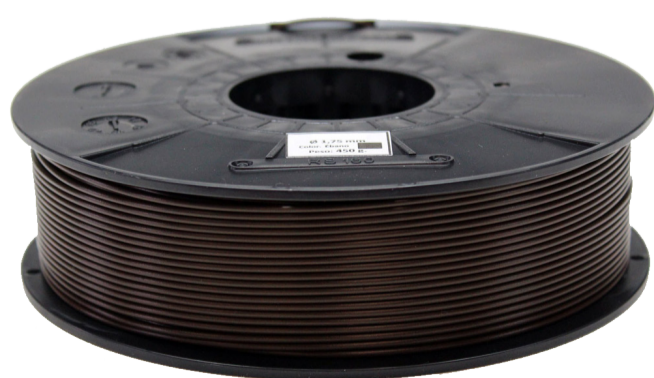
**Bed Temperature:**  
Between 50° and 70°C

Easy to print and nice adhesion between layers

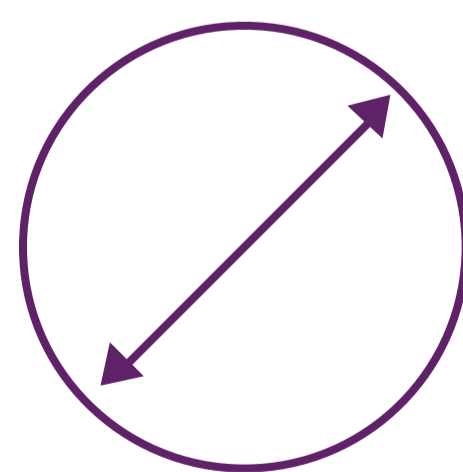


**⚠️ PRINT IN A VENTILATED PLACE**

#### QUALITY WARRANTY OF WINKLE'S PLA - HD FILAMENT



Better spooling



Constant diameter

∅ 1,75 mm  
± 0,05 mm



Cardboard box, vacuum-bag and silica

\*The indicated parameters are valid for correctly calibrated printers (P&D, mechanical and fuser)

\*Supervised and tested manufacturing process (diameter, colour and winding) to guarantee the quality of our product