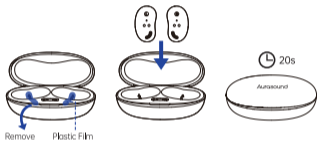


QUICK GUIDE

1st time using

Wake Up



1. Remove

2. Put back

3. Wait for 20 seconds

>>

Wear



1. Put on

2. Twist down

>>

Connect



1. Connect

Touch Area



Scan the QR code
for more guide

For more support:
Email to

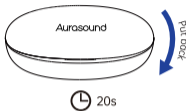
support@aurasoundgroup.com

aurasoundgroup.com

One bud stop working?



1. Click both of them 7 times



2. Wait for 20 seconds



3. Search for pairing in mobile phone again

Reset



1. Press and hold both of them, there will be warning tones "Beep" - "Dsiconnected" - "Beep" - "Power on" - "Beep" - "Pairing", Then release.



2. Restart mobile phone Bluetooth and search for pairing again