

USERS GUIDE

K5242 LCD

Denago City 1, City 2, Commute, and Folding eBikes



CONTENT

Preface.....	- 4 -
1. Appearance and Dimensions.....	- 5 -
1.1 Material and Color	- 5 -
2. Function and Button Definition.....	- 6 -
2.1 Function description	- 6 -
2.2 Normal Display Content	- 6 -
2.3 Button definition	- 6 -
3. Note for Users	- 7 -
4. Installation Instruction	- 7 -
5. User Settings	- 7 -
5.1 On / Off	- 7 -
5.2 User interface.....	- 8 -
5.3 Walk Assist Mode.....	- 8 -
5.4 PAS Level Selection.....	- 9 -
5.5 Battery Indicator	- 9 -
5.6 Speed/Single Trip/Odometer	- 10 -
5.6.1 Real time speed, Trip display interface	- 10 -
5.6.2 Max Speed, Odometer display interface.....	- 11 -
5.6.3 Avg Speed, To Go display interface	- 11 -
5.7 Error Code	- 12 -
6. User Settings	- 12 -
6.1 Wheel Size Setting.....	- 12 -
6.2 Speed Limit Setting	- 13 -
6.3 Backlight Brightness Setting.....	- 14 -
6.4 Display Unit Setting.....	- 14 -
7. Start-up Password Setting	- 15 -
7.1 Start-up Password Enable/Disable	- 15 -

7.2 Start-up Password Modify	- 15 -
8. Preparation Before Startup	- 16 -
9. FAQ	- 16 -
10. Quality Assurance and Warranty Scope	- 16 -
Appendix 1: Error Code Definition	- 17 -

Preface

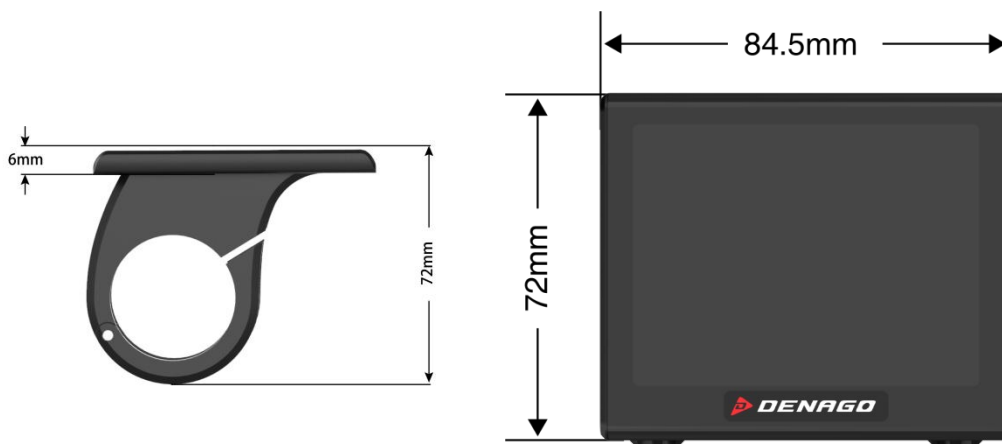
Dear user, to ensure better performance of your e-bike, please read through the K5242-S product introduction carefully before using. We will use the most concise words to inform you of all the details (including the hardware installation, setting and normal operation use of the display) when using our display. Meanwhile, the introduction will also help you to solve possible confusion and barriers.

1. Appearance and Dimensions

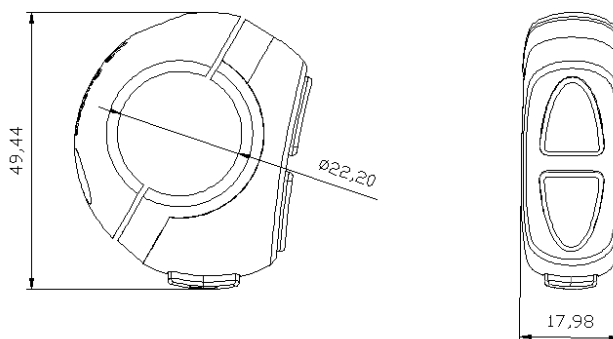
1.1 Material and Color

K5242 products are made of black and white PC. Under the temperature of -20 to 60°C, the shell material can ensure normal usage and good mechanical performance.

Dimension (unit: mm)



K5242 is equipped with special button. N3 button can be installed on the left side of the handlebar or on the right side of the handlebar. N3 button is connected with the bottom lead of k5242 display. Its dimension is as follows:



2. Function and Button Definition

2.1 Function description

K5242 provides you with a variety of function modes, to meet your riding needs.

Its functions are as follows:




- ◆ Battery power indication
- ◆ Speed indication
- ◆ Distance (including single trip distance and ODO display)
- ◆ Walk assist indication
- ◆ Backlight setting
- ◆ Error code indication
- ◆ Various setting parameters

2.2 Normal Display Content



K5242 Normal Display Interface

2.3 Button definition

There are 3 buttons on K5242-BLT, In the following introduction,  is named as “MODE”.  is named as “UP” and  is named as “DOWN”.

3. Note for Users

Be care of the safety use. Don't attempt to release the connector when battery is on power.



Try to avoid hitting.



Don't split the waterproof sticker to avoid affecting the waterproof performance.



Don't modify system parameters to avoid parameters disorder.



Make the display repaired when error code appears.

4. Installation Instruction

When the e-bike is powered off, you can insert the connector of display and the corresponding connector of controller to complete the installation, and adjust the display to a suitable angle.

5. User Settings

5.1 On / Off

Long press "**MODE**" button then the display will work normally, and the controller will power on at the same time.

With the display on, long press "**MODE**" button, the display will shut down, the display will leave off battery, the leakage current of display on is less than 1 μ A.



If the e-bike is not used for more than 10 minutes, the display will automatically shut down.

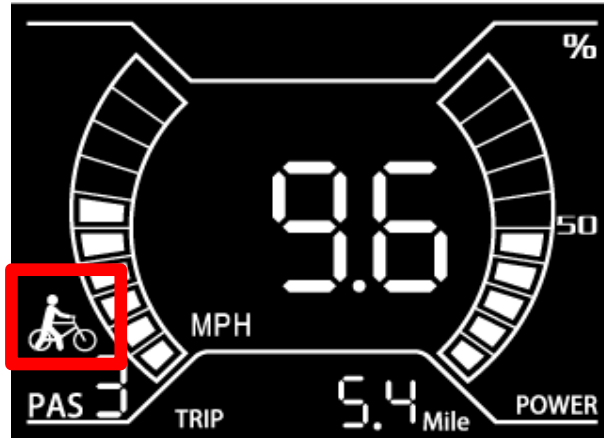
5.2 User interface



Normal display interface

5.3 Walk Assist Mode

Press and hold the “**DOWN**” button for 2 seconds to enter the Walk assist mode. The E-bike will travel at a constant speed of 6km/h.



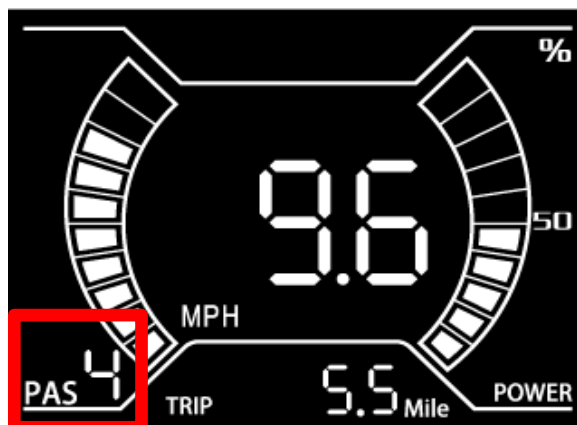
Walk assist mode interface



Walk Assist function can only be used as pushing the e-bike by hands. Please don't use this function when riding.

5.4 PAS Level Selection

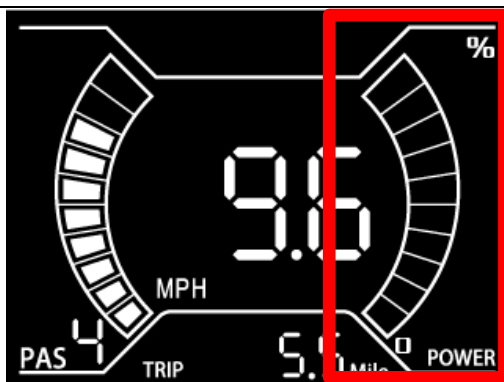
Short press the "UP" or "DOWN" button to switch the PAS level in the main interface, the motor output power will be changed accordingly by the PAS level of E-bike. The default range of PAS level is 0-5 levels. Level 1 is the lowest output level, and the level 5 is the highest output power level of the motor.



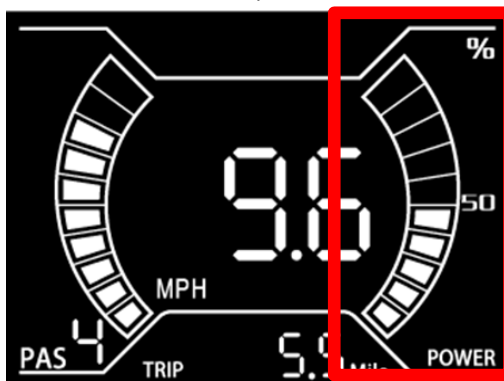
PAS level indicator

5.5 Battery Indicator

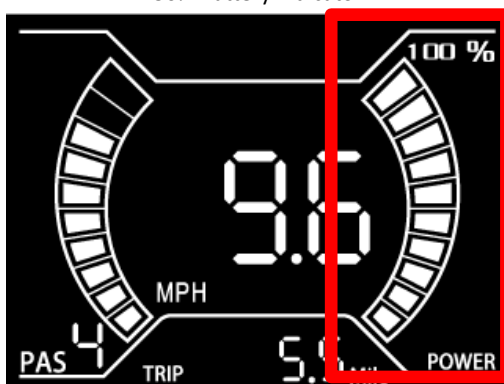
The battery power is shown as a percentage bar. When the battery is fully charged, the power bar shows 100%, each grid represents 10% Battery power.



0% Battery indicator



50% Battery indicator



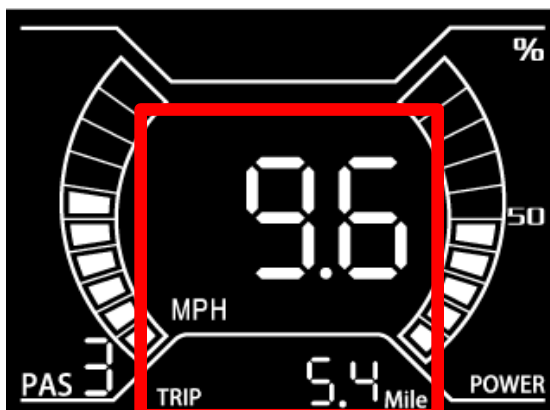
100% Battery indicator

5.6 Speed/Single Trip/Odometer

5.6.1 Real time speed, Trip display interface

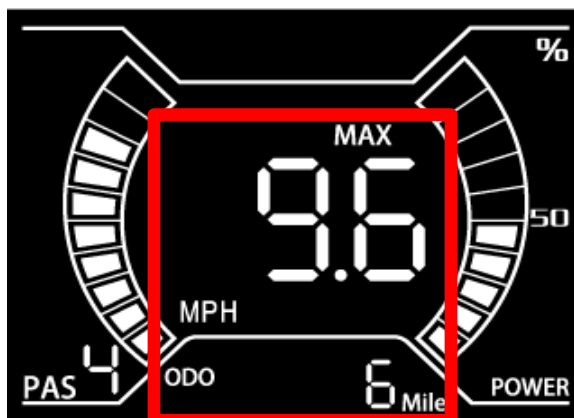
When display is powered on, it shows the real-time speed and single trip mileage interface by default. When the speed is zero, long press "MODE" and "DOWN" button for 2 seconds, and the current single trip mileage will be cleared. After the display is shut down and restarted, the single trip mileage will

not be cleared.



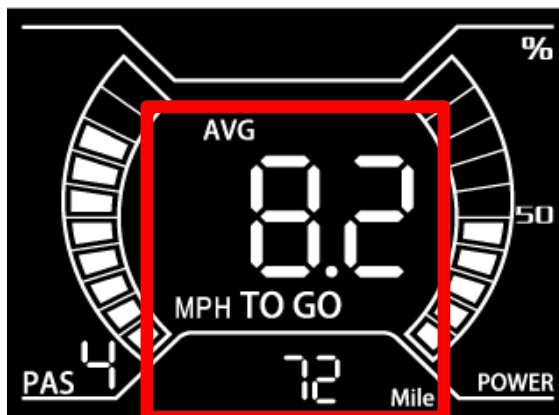
5.6.2 Max Speed, Odometer display interface

When display is powered on, short press "MODE" button in the normal interface to switch the Max speed and Odometer mileage data. The Max speed represents the maximum speed during this ride, and the Odometer mileage is the total mileage of the E-bike.



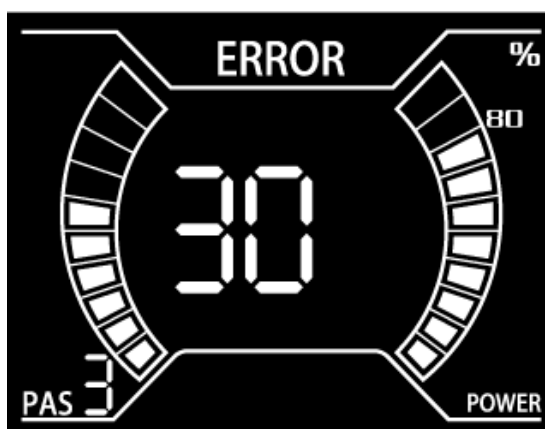
5.6.3 Avg Speed, To Go display interface

Short press "MODE" button again to switch to the Avg speed and To Go mileage display interface. The Avg speed represents the average speed during this ride, and the To Go mileage represents the remaining mileage that the E-bike can go.



5.7 Error Code

When the e-bike electronic control system fails, the display will automatically indicate the error code. For the definition of detailed error codes, see appendix 1.



Error Code indicator



The fault can only be exited when the fault is eliminated, and the E-bike cannot continue to drive after a fault occurs.

6. User Settings

When there is no speed in the power on state, press and hold the "UP" and "DOWN" button at the same time for 2 seconds, and the display will enter the setting interface.

6.1 Wheel Size Setting

When entering the wheel size setting option. The settable values are: 16, 18, 20, 22, 24, 26, 700C, 27.5,

and 28 inch. Select the corresponding wheel diameter of the E-bike through “UP” and “DOWN” button to ensure the accuracy of the speed display and mileage display. Long press “MODE” button to return to the normal interface.

Wheel Size Setting

City 1, City 2, Commute --28

Folding -22



Wheel size setting interface

6.2 Speed Limit Setting

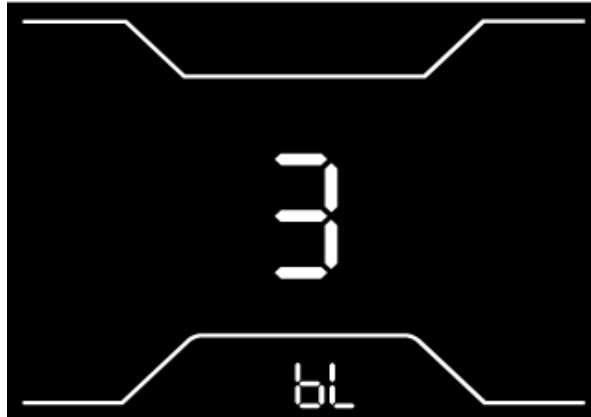
Short press “MODE” button enter the speed limit setting option. The optional range of the maximum speed setting is 17Km/h to 45Km/h (11MPH to 28 MPH). It can be set by “UP” and “DOWN” button. The default setting is 32Km/H (20MPH). Long press “MODE” button to return to the normal interface.



Speed limit setting interface

6.3 Backlight Brightness Setting

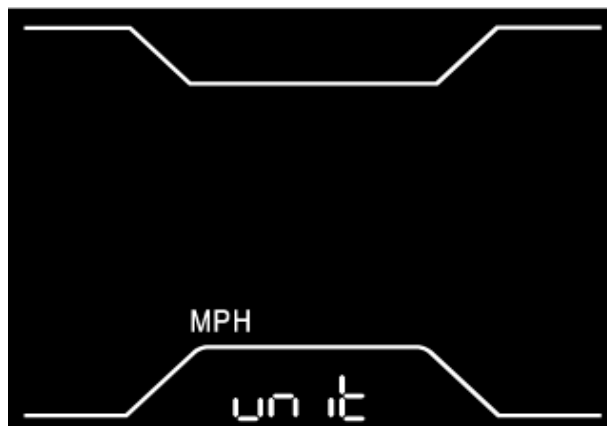
Short press “**MODE**” button to enter the backlight brightness setting option. The setting options: 1, 2 and 3 indicates the backlight brightness, 1 is the darkest, 2 is standard brightness, 3 is the brightest. The default value is 3. Long press “**MODE**” button to return to the normal interface.



Backlight brightness setting interface

6.4 Display Unit Setting

Short press “**MODE**” button to enter the Unit setting option. The setting parameters are Km/h and Mile/h. Km/h or Mile/h can be selected by pressing “**UP**” and “**DOWN**” button. Km/h means the unit is metric system, and MPH means the unit is Imperial system. The default setting is MPH. Long press “**MODE**” button to return to the normal interface.



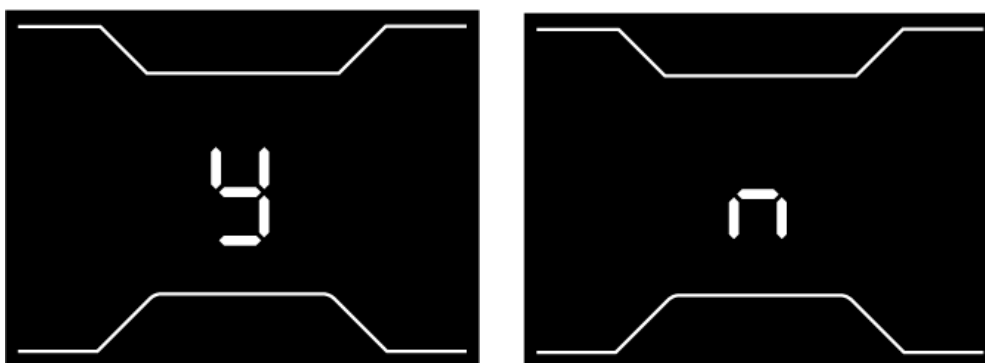
Display unit setting interface

7. Start-up Password Setting ONLY ON COMMUTE, Folding and City 2

When the speed is zero, press “UP” and “DOWN” button for two seconds to enter the user setting interface. Press “UP” and “DOWN” button for two seconds again to enter the start-up password setting interface.

7.1 Start-up Password Enable/Disable

After entering the password enable setting, press “UP” or “DOWN” button to switch the options "y" and "n", "y" means the startup password is enabled and "n" means the startup password is disabled. After selecting "Y" to enable the startup password, press “MODE” button to modify startup password. If option “n” is selected, it will return to the normal setting interface.



Start-up Password Enable / Disable setting interface

7.2 Start-up Password Modify

After the password enabled, press “MODE” button to enter the interface of modifying the startup password. First enter the existing 4-digit password (PS0), press “UP” or “DOWN” button to switch the numbers, press “MODE” button to confirm. After the 4-digit input is correct, it will enter the modification interface and enter the new password (PS1). If the input is wrong, it will return to the first digit.

If user forget the current password, press and hold “UP”, “DOWN” and “MODE” button while entering the current password interface to restore the default initial password (0000). After restoring the initial password, it will automatically jump back to the normal setting interface.



Input Current Password



Input New Password

8. Preparation Before Startup

Please read the instruction carefully before using the display.

9. FAQ

Q: Why can't turn on the display?

A: Please check whether the battery is turned on or the leakage lead wire is broken

Q: How to deal with the error code display?

A: Contact the e-bike maintenance station in time.

10. Quality Assurance and Warranty Scope

I, Warranty Information:

1, King-Meter will be responsible for all faults arising during normal operation that are caused by a quality defect.

2, The warranty time is 24 months from the day the display leaves the factory.

II, The following are not covered by warranty:

1, Shell opened.

2, Connector damaged.

3, After display out of factory, the shell is scratched or damaged.

4, Lead wire of display scratch or break.

5, The fault or damage is caused by the force majeure (such as fire, earthquake, etc.) or natural disasters (such as lightning, flooding, etc.)

6, Product exceeded warranty period.

Appendix 1: Error Code Definition

TROUBLE SHOOTING- MONITOR

Denago's City 1, City 2, Commute 1 and Folding eBike models are designed to provide reliable performance for a lifetime of use. In the rare event of a problem, an error code will be shown on the display to help diagnose and resolve the issue.

CODE	NAME	CAUSE	SOLUTION
21	Current Abnormal	Possible damage to the motor cable.	Check whether the three phase wires of the motor are short-circuited.
22	Throttle Abnormal	The thumb throttle is not returning to its original position when released.	Make sure nothing is blocking the throttle lever from moving through the full range of motion in both directions.
23	Motor Phase Problem	Poor condition phase wires, or disconnected motor phase line.	Visually inspect the cables connecting the rear hub motor to the controller for damage. Disconnect the hub motor cable, inspect for and remove any debris or contamination, and firmly re-connect the cable.
24	Motor Hall Defect	No Hall controller: check whether the phase wire is in good condition With Hall controller: check whether the Hall outlet is good	This error may appear if the connection to the rear wheel hub motor is not fully plugged in. Unplug it, check for and remove any debris, then fully re-connect.
25	Brake Failed	The ebike motor cut-off brake levers are engaged, which stops the motor from turning on.	When you power on the ebike, make sure you aren't squeezing the brake lever(s). Check the sensitivity adjustment of the brake lever motor cut-off switches.
26	Over Heat	Full Throttle up hill for sustained period	Let bike rest for 5-10 minutes and resume. Replace throttle if continues
30	Communication Failure	The display cannot communicate with the controller.	Check to make sure the connection between the display and controller is fully engaged and free of debris.

Appendix 2: PAS Settings

CITY 1 and CITY 2						Commute					
MPH	PAS1	PAS2	PAS3	PAS4	PAS5	MPH	PAS1	PAS2	PAS3	PAS4	PAS5
28	16.8	19.6	22.4	25.2	28	28	8.4	11.2	16.8	19.6	28
27	16.2	18.9	21.6	24.3	27	27	8.1	10.8	16.2	18.9	27
26	15.6	18.2	20.8	23.4	26	26	7.8	10.4	15.6	18.2	26
25	15	17.5	20	22.5	25	25	7.5	10	15	17.5	25
24	14.4	16.8	19.2	21.6	24	24	7.2	9.6	14.4	16.8	24
23	13.8	16.1	18.4	20.7	23	23	6.9	9.2	13.8	16.1	23
22	13.2	15.4	17.6	19.8	22	22	6.6	8.8	13.2	15.4	22
21	12.6	14.7	16.8	18.9	21	21	6.3	8.4	12.6	14.7	21
20	12	14	16	18	20	20	6	8	12	14	20
19	11.4	13.3	15.2	17.1	19	19	5.7	7.6	11.4	13.3	19
18	10.8	12.6	14.4	16.2	18	18	5.4	7.2	10.8	12.6	18
17	10.2	11.9	13.6	15.3	17	17	5.1	6.8	10.2	11.9	17
16	9.6	11.2	12.8	14.4	16	16	4.8	6.4	9.6	11.2	16
15	9.1	10.5	12	13.5	15	15	4.5	6	9	10.5	15
14	8.4	9.8	11.2	12.6	14	14	4.2	5.6	8.4	9.8	14
13	7.8	9.1	10.4	11.7	13	13	3.9	5.2	7.8	9.1	13
12	7.2	8.4	9.6	10.8	12	12	3.6	4.8	7.2	8.4	12
11	6.6	7.7	8.8	9.9	11	11	3.3	4.4	6.6	7.7	11

Folding- set speed is 20MPH adjustable up to 25 and down to 10 top speed						
MPH	PAS1	PAS2	PAS3	PAS4	PAS5	
25	5	9	13	17	25	
24	6	11	16	19	24	
23	6	10	15	18	23	
22	6	10	14	18	22	
21	5	9	14	17	21	
SET SPEED	5	9	13	16	20	
19	5	9	12	15	19	
18	5	8	12	14	18	
17	4	8	11	14	17	
16	4	7	10	13	16	
15	4	7	10	12	15	
14	4	6	9	11	14	
13	3	6	8	10	13	
12	3	5	8	10	12	
11	3	5	7	9	11	
10	3	5	7	8	10	

1. Turn Monitor On (M Button)
2. Press and Hold + and – together.
3. Go to LS screen use- M button to toggle to MAX Speed
4. Adjust your speed setting.
5. Press and HOLD M button to go back to Ride Ready Screen



I, Warranty Information:

- 1, King-Meter will be responsible for all faults arising during normal operation that are caused by a quality defect.
 - 2, The warranty time is 24 months from the day the display leaves the factory.
- II, The following are not covered by warranty:
- 1, Shell opened.
 - 2, Connector damaged.
 - 3, After display out of factory, the shell is scratched or damaged.
 - 4, Lead wire of display scratch or break.
 - 5, The fault or damage is caused by the force majeure (such as fire, earthquake, etc.) or natural disasters (such as lightning, flooding, etc.)
 - 6, Product exceeded warranty period.

