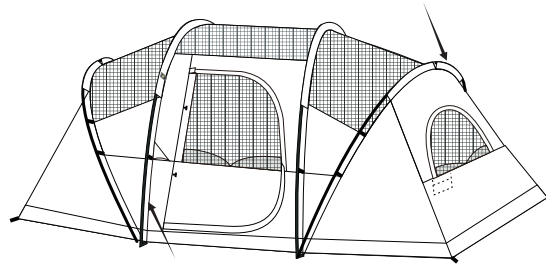


22cm

16ft x 9ft x 72in (4.88m x 2.74m x 1.83m)

CP-160972 Family Dome Tent

B:Side pole



A:Main Body Pole

If you have any problems, feel free to contact us via:  
[hicamper@unipros.com.cn](mailto:hicamper@unipros.com.cn)  
We'll give you a satisfied solution within 12 hrs.

Parts list:



A Main Body Pole (Black) x 2



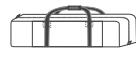
B Side pole (Black) x 2



C Rainfly pole (Black) x 1



D Rainfly



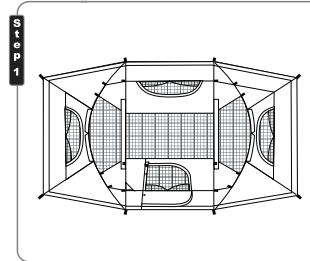
E Carry bag



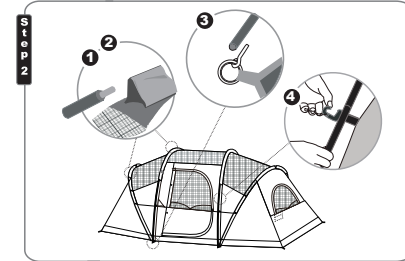
F Stake x 16

Sewing here

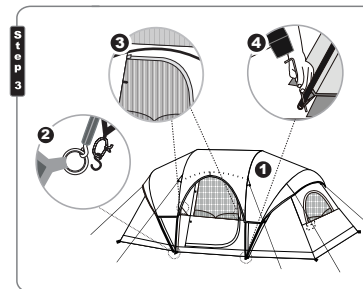
15cm



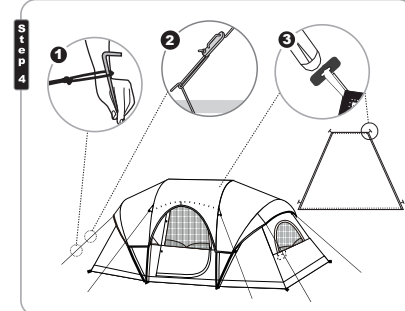
- 1) Empty the bag and confirm all parts are included and undamaged.  
**Do this at home before leaving on the trip.**
- 2) Layout the body of the tent on the ground without rocks or stick, not under trees. Place the tent door facing your desired direction.



- 1) Stake the tent. Assemble the tent poles.
- 2) Insert the Body poles & Side pole into the pole sleeves.
- 3) Connect poles to the tent with the pins of the grommets. Repeat for all poles.
- 4) Attach clips along the edges of tent to body poles.



- 1) Put the rain fly on top of the tent. Make sure the door side matches your tent.
- 2) Connect the S-hooks (found at the rainfly corners) with loop (found at the tent corners)
- 3) Put the rainfly pole C to expand the tent.
- 4) Stake the tent.



- 1) Stake down tent corners through the stake rings.
- 2) Adjust the sliders to make sure the guy lines are tight.
- 3) The curtain provides an extra privacy room in the tent. Attach the curtain's plastic toggles to the loop inside the tent.

Made in Cambodia