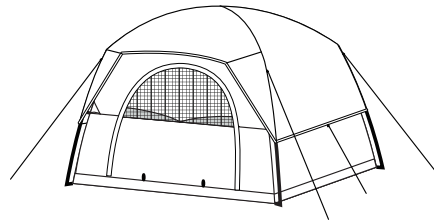


22cm

11ft x 7ft x 72in (3.35m x 2.13m x 1.83m)

### CP-1107N Family Cabin Dome


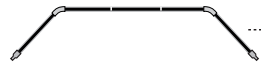
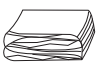
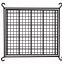
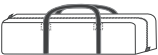
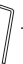


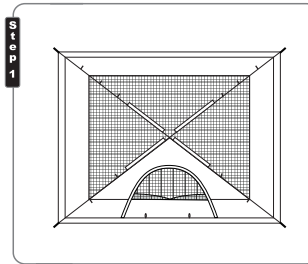
We offer every customer 12-Month Warranty, please send us your order number to activate your warranty. [hicamper@unipros.com.cn](mailto:hicamper@unipros.com.cn)

Sewing here

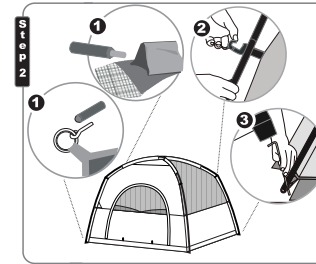
15cm

#### Parts list:

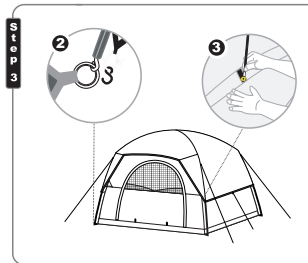
-  ..... **A(2)** Tent Poles
-  ..... **B(1)** Rainfly pole w/ tips
-  ..... **C(1)** Rainfly w/ taped seams & 4 S-hooks
-  ..... **D(1)** Gear Loft
-  ..... **E(1)** Carry Bag
-  ..... **F(11)** Stake Set



- 1) Empty contents of bag(s) and confirm all parts are included and undamaged. **Tip: Do this at home before you leave on your trip.**
- 2) Select a smooth level site and spread out your tent.
- 3) Extend poles and place in position ready for installation.



- 1) Slide poles through sleeves (poles will cross each other). Gently flex one pole ends onto pin-rings. Repeat for the others.
- 2) Snap J-Hooks(attached to tent body) on tent pole to shape the tent.
- 3) To stake out the tent, drive stakes through the pin-ring assemblies on the tent base. **Tip:** Stakes provided are for solid ground. Camping in sand? We suggest corkscrew style. Check favorite retailer for availability.



- 1) Locate the horizontal sleeve on the underside of the rainfly. Push the rainfly pole into pole sleeve.
- 2) Drape rainfly over tent. Connect each S-Hook to pin-ring at base of tent.
- 3) Insert the tips of the rainfly pole into the grommets at the front of the pole sleeve.
- 4) Fasten the nylon fasteners located under the rainfly onto corresponding tent poles.



- 1) To stabilize the tent, unroll the guy ropes attached to the webbing loops on the rainfly. Make a loop at the opposite end of the guy line using the plastic slider and place the loop over the tent stake. Drive the stake into the ground to secure. Adjust the plastic slider to tighten the guy rope. Repeat for each guy rope.
- 2) The gear loft is for extra storage of light weight items (i.e. maps, eye-glasses). Attach its S-hooks to the fabric loops inside tent ceiling.

Reverse the above steps to take it down.

Made in China