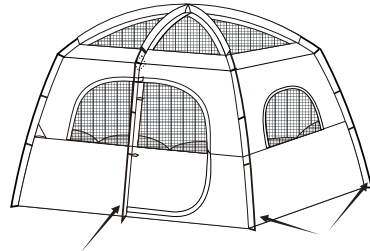


22cm

11ft x 7ft x 72in (3.35m x 2.13m x 1.82m)

CP-110772 Family Cabin Tent



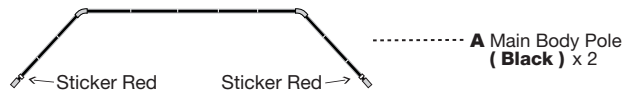
B: Middle Pole **A:** Main Body Pole

If you have any problems, feel free to contact us via:
hicamper@unipros.com.cn
We'll give you a satisfied solution within 12 hrs.

Sewing here

15cm

Parts list:



A Main Body Pole (Black) x 2



B Middle Pole (Black) x 1



C Rainfly



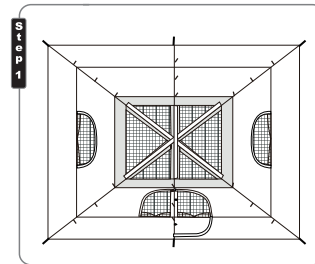
D Carry bag



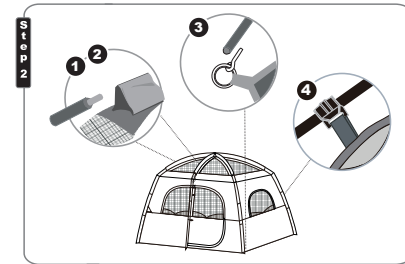
E Gear Loft



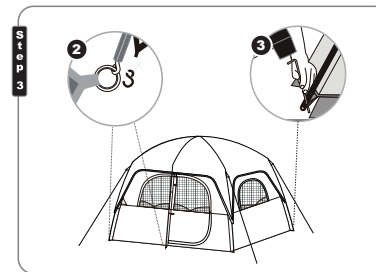
F Stake x 10



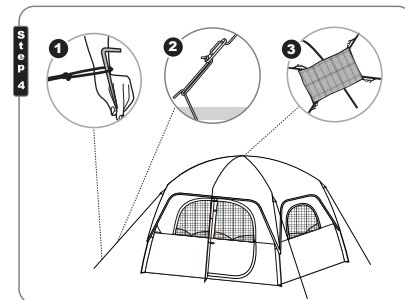
- Step 1**
- 1) Empty the bag and confirm all parts are included and undamaged. **Do this at home before leaving on the trip.**
 - 2) Layout the body of the tent on the ground without rocks or stick, not under trees. Place the tent door facing your desired direction.



- Step 2**
- 1) Stake the tent. Assemble the tent poles.
 - 2) Put the tent poles to the body of the tent through the sleeves.
 - 3) Connect poles to the tent with the pins of the grommets.
 - 4) Clip-on the tent body.



- Step 3**
- 1) Put the rain fly on top of the tent. Make sure the door side matches your tent.
 - 2) Link the S-hooks at the end of the rainfly with the grommets.
 - 3) Stake the tent.



- Step 4**
- 1) Stake the guy lines with the loops.
 - 2) Adjust the sliders to make sure the guy lines are tight.
 - 3) The gear loft is for extra storage of light weight items. Attach its S-hooks to the fabric loops inside tent ceiling.

Made in Cambodia