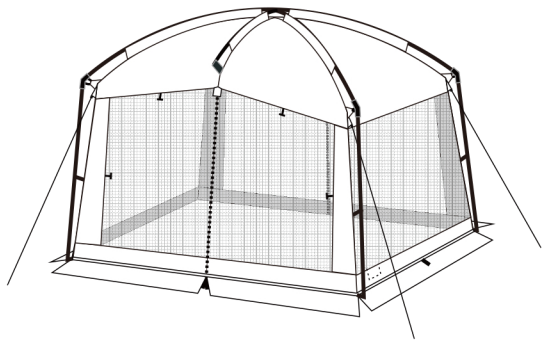


12ft x 10ft x 90in (3.66m x 3.05m x 2.29m)

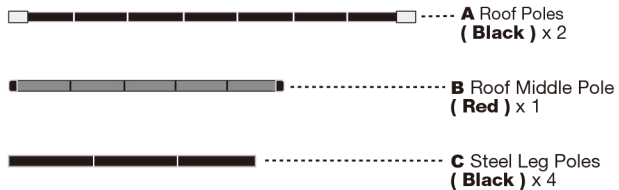
CP-121090S Screen House



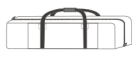
We offer every customer 12-Month Warranty,
please send us your order number to activate your warranty.

hicamper@unipros.com.cn

Parts list:



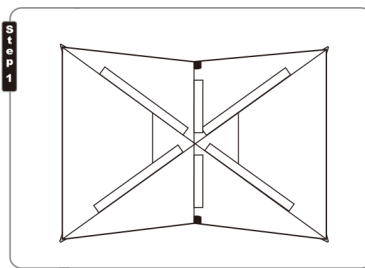
D Skin



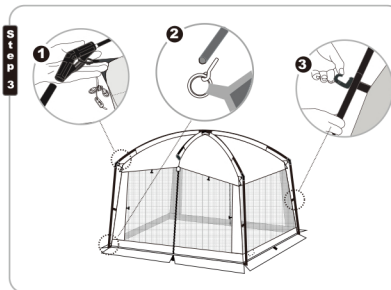
E Carry bag



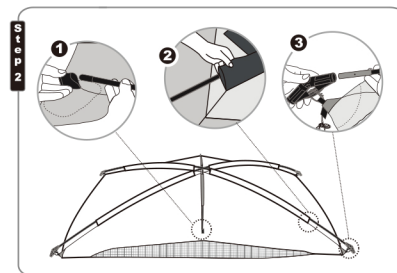
F Stake x 12



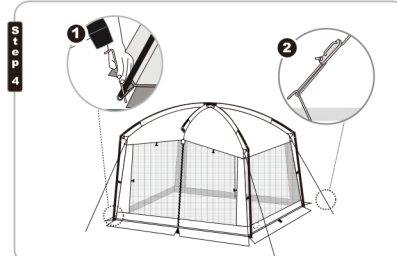
- 1) Empty the bag and confirm all parts are included and undamaged.
Do this at home before leaving on the trip.
- 2) Select a smooth level site. Lay all parts of the structure out on a flat open area. Extend poles and sort into groups, ie. roof poles, leg poles. This will simplify the assembly process.



- 1) Insert a steel leg pole into the smooth end of each elbow connector.
- 2) secure the other end of pole onto the pin-rings at base of screen house. Repeat for all leg poles.
- 3) Attach clips along the edges of tent to body poles.



- 1) Begin with the Roof Middle Pole and slide it into its middle roof sleeves; finish securing by inserting both pole ends into the pole pockets above each door zipper.
- 2) Take a Roof Pole and slide it into its sleeves; then insert the end into the ribbed side of one Elbow Connector at a roof corner. Gently flex pole into an arch and secure pole ends into its own ribbed side of elbow connectors at each corner. Repeat with the other pole. Poles will cross at the center.
- 3) Place one end of a steel leg pole into the smooth end of Elbow Connector, then secure the other end of the leg pole onto the pin-rings at base of screen house. Repeat with the remaining steel leg poles.



- 1) Stake down the screen house corners through the stake rings.
- 2) Adjust the sliders to make sure the guy lines are tight.