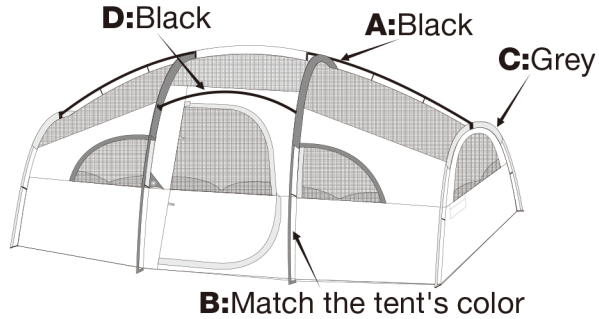


22cm





14ft x 9ft x 72in (4.27m x 2.74m x 1.82m)

HG-140972 Family Dome Tent



If you have any problems, feel free to contact us via:
hicamper@unipros.com.cn
 We'll give you a satisfied solution within 12 hrs.

Parts list:

-  **A Top pole (Black)**
x 1
-  **B Body pole (Match the tent color:Red/ Green/Blue) x 2**
-  **C Side pole (Grey)**
x 2
-  **D Additional pole (Black) x 1**



E Rainfly



F Carry bag



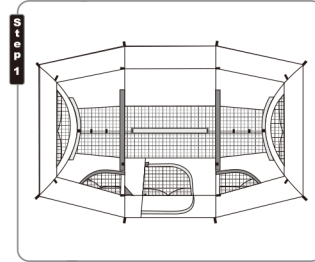
G Curtain



H Stake x 14

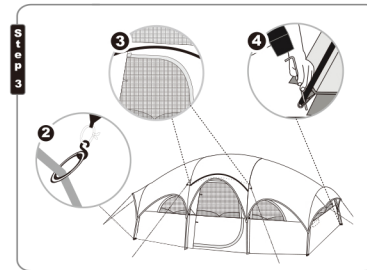
Sewing here

15cm

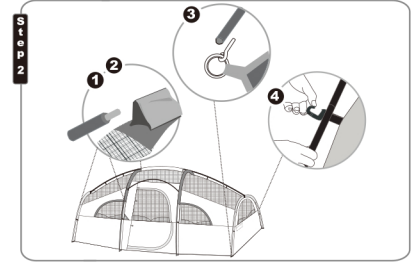


- 1) Empty the bag and confirm all parts are included and undamaged.
Do this at home before leaving on the trip.

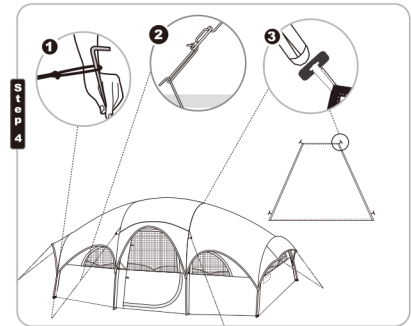
- 2) Lay out the body of the tent on the ground without rocks or stick, not under trees. Place the tent door facing your desire direction.



- 1) Put the rain fly on top of the tent. Make sure the door side matches your tent.
- 2) Link the S-hooks at the end of the rainfly with the grommets.
- 3) Put the additional pole to expend the tent.
- 4) Stake the tent.



- 1) Assemble the tent poles.
- 2) Put the tent poles to the body of the tent through the sleeves. **Match the poles in color. The top pole is black. The body poles' color match the tent's color. The side poles are white.**
- 3) Connect poles to the tent with the pins of the grommets.
- 4) Clip on the tent body.



- 1) Stake the guy lines with the loops.
- 2) Adjust the sliders to make sure the guy lines are tight.
- 3) The curtain provides an extra privacy room in the tent. Attach the curtain's plastic toggles to the loop inside the tent.