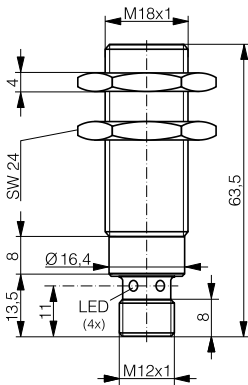
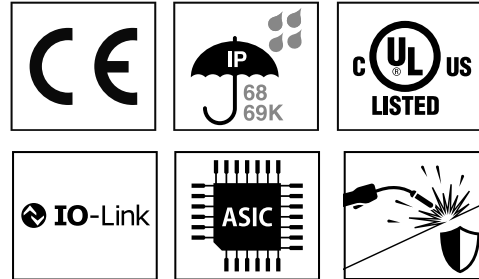


HOUSING	OPERATING DISTANCE	MOUNTING	✓ Anti-spatter coating ✓ Magnetic-field immunity: medium frequency ≤ 15 kA 50 Hz fields ≤ 40 mT	✓ Robust full-metal sensor, impact resistant ✓ Long operating distance ✓ Factor 1 on Fe and Al
M18	10 mm	see page 2		



DW-AS-703-M18-693



DETECTION DATA		INTERFACE	
Rated operating distance (S_n)	10 mm	Indicator LED, yellow	Sensing state ($0 \leq s \leq S_n$)
Assured operating distance (S_a)	$\leq (0.81 \times S_n)$ mm	IO-Link	✓
Repeat accuracy	≤ 0.5 mm	MTTF (@40°C)	1028 y
Hysteresis	$3\% S_r \leq \text{Hyst} \leq 15\% S_r$		
Temperature drift	$\leq 10\% S_r$		
Standard target	30 x 30 x 1 mm ³ , FE360		

Note: $0.9S_n \leq S_a \leq 1.1S_n$.

ELECTRICAL DATA		MECHANICAL DATA	
Supply voltage range (U_B)	10...30 VDC	Mounting	Embeddable
Residual ripple	$\leq 20\% U_B$	Housing material	V2A / 1.4305 / AISI 303 (+ coating)
Output current	≤ 200 mA	Sensing face material	V2A / 1.4305 / AISI 303 (+ coating)
Output voltage drop	≤ 2.0 VDC	Max tightening torque	50 Nm
Power consumption (no-load)	≤ 10 mA	Ambient operating temperature	-25...+85°C ¹
Residual current	≤ 0.1 mA	Enclosure rating	IP68 / IP69K
Switching frequency	≤ 15 Hz	Weight (cable/connector)	see page 2
Short-circuit protection	✓	Shock and vibration	IEC 60947-5-2 / 7.4
Voltage reversal protection	✓		
Cable length max.	≤ 300 m		

¹Maximum temperature according to UL: 70°C.

Note: all data measured according to IEC 60947-5-2 standard with $U_B=20 \dots 30$ VDC, $T_A=23^\circ\text{C} \pm 5^\circ\text{C}$.

CORRECTION FACTORS FOR TARGET OF

Steel FE 360	1	Copper	0.85	Aluminum	1	Brass	1.3	Stainless Steel V2A 1/2 mm	0.4 / 0.8
--------------	---	--------	------	----------	---	-------	-----	----------------------------	-----------

CORRECTION FACTORS FOR EMBEDDABLE MOUNTING IN SUPPORT OF

Steel FE 360	0.95	Aluminum	*	Brass	*	Stainless Steel V2A	*
--------------	------	----------	---	-------	---	---------------------	---

*See installation conditions, flush mounting not possible

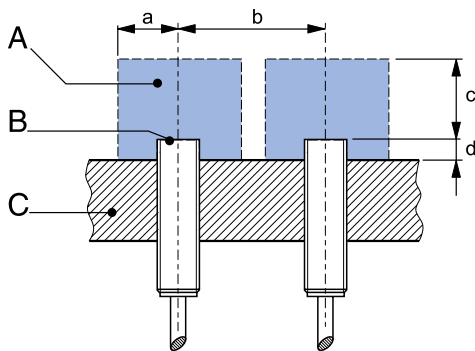
CORRECTION FACTORS FOR EMBEDDABLE MOUNTING IN MOUNTING BRACKETS OF

	FE target	AL target
Steel, copper plated	0.95	0.75
Stainless Steel	0.80	0.70
ASU-0041-180 (Coated Steel)	0.90	0.80
ASU-3012-180 (Softnoze)	*	*

Note: the operating distance of the sensor must be multiplied by the correction factor of the material. For example, the operating distance on Aluminum is $S_{n,Al} = S_n \times CF_{Al}$.

*Use DW-AS-M18-697

INSTALLATION CONDITIONS



A : metal free zone	a : 25 mm	d : steel	0 mm
B : sensing face	b : 50 mm	aluminum	0.5 mm
C : support	c : 30 mm	Brass	0.5 mm
		Stainless steel	6 mm
		Nuts	9 mm

Note: additional installation information can be found in the glossary of the Contrinex General Catalog.

IO-LINK FUNCTIONALITIES

IO-Link version	1.1
SIO mode	Supported
Process data	7-bit input
Baudrate	COM2 (38.4 kBaud)
Minimum cycle time	10.4 ms
ISDU	Not supported



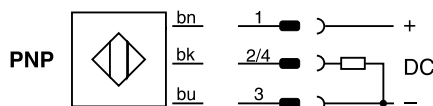
IO-Link files may be downloaded from

www.contrinex.com/product-range/inductive-sensors/.

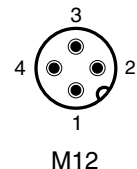
Select the product name to display the product page with corresponding downloads.

Alternatively, just click/scan the QR code on the left.

WIRING DIAGRAM



PIN ASSIGNMENT



AVAILABLE TYPES

COATED

Part number	Part reference	Polarity	Connection	Output on pin 2	Output on pin 4 / bk	Weight
330-320-157	DW-AS-703-M18-693	PNP	M12 4-pin	-	Normally open (NO)	53 g

Note: part reference may include additional suffix to indicate a revision version or special version. Further information is available on request.

Operators of the products we supply are responsible for compliance with measures for the protection of persons. The use of our equipment in applications where the safety of persons might be at risk is only authorized if the operator observes and implements separate, appropriate and necessary measures for the protection of persons and machines. Terms of delivery and rights to change design reserved.