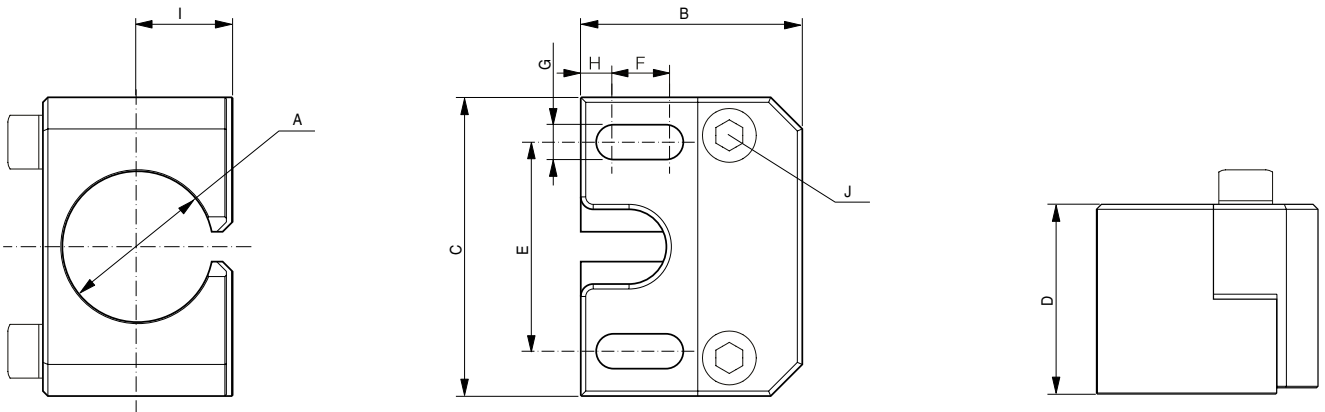
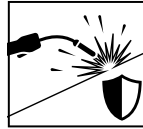


- ✓ ACTIVESTONE spatter-resistant coating
- ✓ For cylindrical sensors Ø 30 mm/M30
- ✓ Compact block-style protection
- ✓ Heavy duty all-steel construction



MECHANICAL DATA

Material

Stainless Steel 316L

AVAILABLE TYPES

Part number	Part reference	A	B	C	D	E	F	G	H	I	J
606-000-024	ASU-0051-300	30 mm / M30	21.0 mm	60.0 mm	36.85 mm	44.7mm					M6x30

Note: additional suffix can appear to indicate a revision version or a special version.

Operators of the products we supply are responsible for compliance with measures for the protection of persons. The use of our equipment in applications where the safety of persons might be at risk is only authorized if the operator observes and implements separate, appropriate and necessary measures for the protection of persons and machines. Terms of delivery and rights to change design reserved.