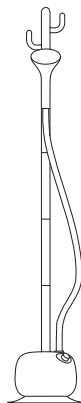


## 直立式蒸氣掛熨 STAND GARMENT STEAMER



## 使用說明 USER MANUAL

**i** 使用產品前，請仔細閱讀本使用說明書。本產品僅限家居使用。

Before using the product, please read this user manual carefully and keep it for future reference. This product is intended for indoor use.

**i** 本說明書中產品設計、規格及功能僅供參考，實際產品功能和規格可能會有所不同。產品資料如有更改，恕不另行通知。如中英文版本有差異時，應以中文版為準。

The product design, specifications and functions in this manual are for reference only. Actual product may vary. Product details are subject to change without prior notice. In case there is any inconsistency or conflict between English version and Chinese version of the terms, the Chinese version shall prevail.

## Bear•為香港蝸居而誕生

成立於2006年3月，於2019年8月23日正式掛牌上市。

Bear微家電/小家電集合實用、多功能、簡約、時尚、小巧等多種特色，放在家裡每個角落，也能成為裝潢的一部分，營造出家居品味。這些特點讓 Bear成為香港小家庭及單身男女在選購小家電時的優先選擇。

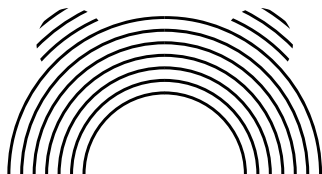
Bear以人為本，產品由入廚到生活家電，滿足你生活上各種需求，對於繁忙又對生活有要求的人，絕對是家中必備。

幸福就是那麼簡單！

Bear帶給你生活中的一點甜蜜幸福。無論是忙碌早晨的一片果醬鬆脆厚多士，夏日午後的一杯清新慢磨果汁，還是冬日睡前的暖暖花果茶。Bear為香港人繁忙的生活打造出片刻寧靜與優雅，療癒你的身心靈。

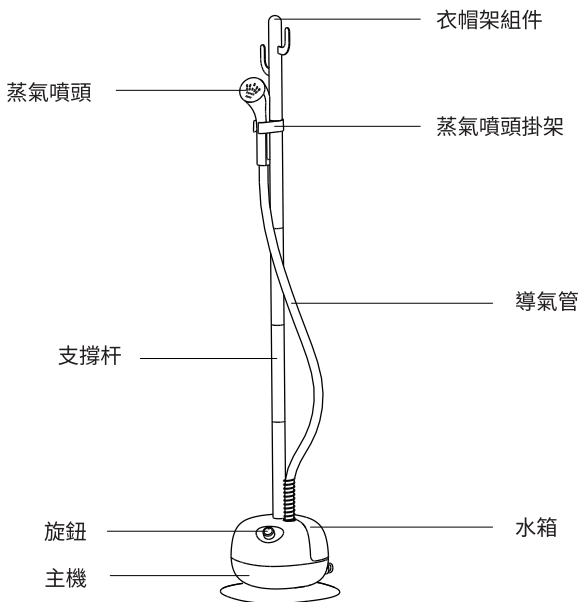
## Bear•小餐桌上的廚樂

不需要大廚房，不需要巧手廚藝，只要一張小餐桌及Bear小廚具家電，你也做到的簡單料理，讓每個人也可體驗入廚樂趣。

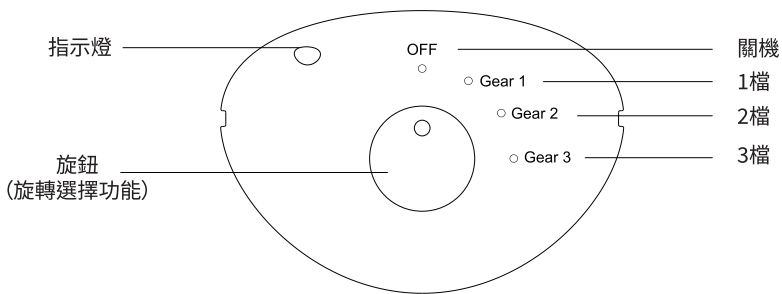




## 產品簡介



## 控制旋鈕



# 使用指南

## 安全注意事項

為防止觸電、火災、燙傷等事故，使用前請仔細閱讀並且遵循以下安全事項：

- 請勿將產品直接連到直流電源上使用。
- 請勿擅自拆卸或改裝產品或使用非生產商提供的零件進行維修，否則可造成危險及令保修服務無效。
- 請勿在同一個插座上使用其他大功率電器，避免電路過載。
- 本產品在使用時嚴禁小孩以及肢體不健全、感覺或精神上有障礙或缺乏相關經驗和知識的人單獨操作，若有小孩在旁，須加倍小心使用本產品。切勿將本產品置於小孩能觸及的地方。

請將產品放在穩定的表面上使用和擱置。

- 如果產品發生跌落、有可見的損壞跡像或滲漏現象，則這個器具不能使用。
- 如電源線及其它部件有損壞時，請不要使用，並送到指定的維修服務點檢查維修。
- 使用前要保證電源插頭乾燥。
- 產品最大負重建議不超過4kg。
- 移動產品時，需提起機器移動，禁止拉扯電源線、導氣管拖動。
- 產品請勿放置在較高的枱面上使用，如桌子或者椅子上。
- 產品工作前，要確保整機及支撐杆平整穩固，以免掛燙翻倒或水溢出。
- 開始使用本產品前，支撐杆應全部組裝到位，衣帽架放置蒸氣噴頭，導氣管要自熱放置，不能折管使用。

請勿將本產品用於熨燙衣物外的其他用途。產品通電工作期間，使用者不能離開。

- 請勿在水箱水量不足時加熱使用。
- 加水前，請拔出電源線插頭。
- 本產品通電工作期間，當使用產品時要注意蒸氣噴濺的危險，切勿將出氣口對著人，以免燙傷。

本產品通電工作期間，出氣口高溫，請勿觸摸，以免燙傷。

- 本產品通電工作期間，會產生高溫蒸氣，對耐熱性不好的衣物（如皮衣）會引起變形、變色、脫色，請勿使用對其使用。

- 本產品通電工作期間，請勿將電源線接觸到機器發熱的表面，比如：出氣口燙頭附近、導氣管。

本產品通電工作期間，偶爾“咕嚕”聲屬於正常現象。將導汽管向上拉直，即可出汽順暢。

- 本產品通電工作期間，請勿過度彎折、纏繞導氣管或使導氣管長期處於U形狀態。
- 使用完畢，請拔出電源線插頭。

插拔插頭時，必須手握插頭，禁止拉電源線或濕手操作。

收納產品前，請確保產品已冷卻，並將機器內的水排出。

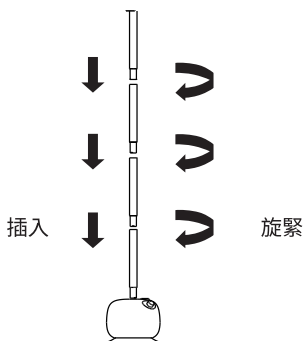
## 控制面板操作說明

1. 旋鈕順時針旋轉，啟動開機。每次開機首次加熱，需預熱一會後才有蒸汽噴出。
2. 調節旋鈕可以選擇不同檔位工作。1檔建議用於絲綢、化纖類布料衣物；2檔建議用於棉、麻類布料衣物；3檔建議用於毛呢、毛絨類衣物。

## 安裝步驟

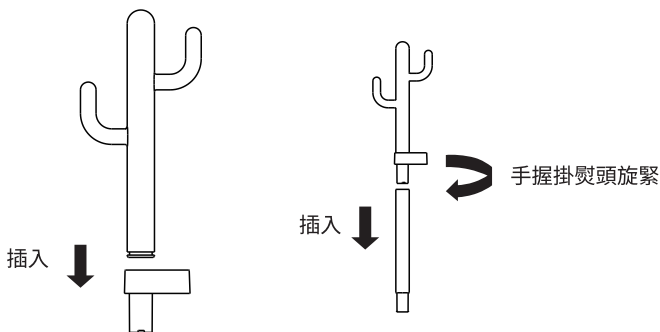
### 支撐杆組件安裝

如圖所示，可以通過拼接不同數量的支撐桿調節高度，並依次裝好支撐桿。



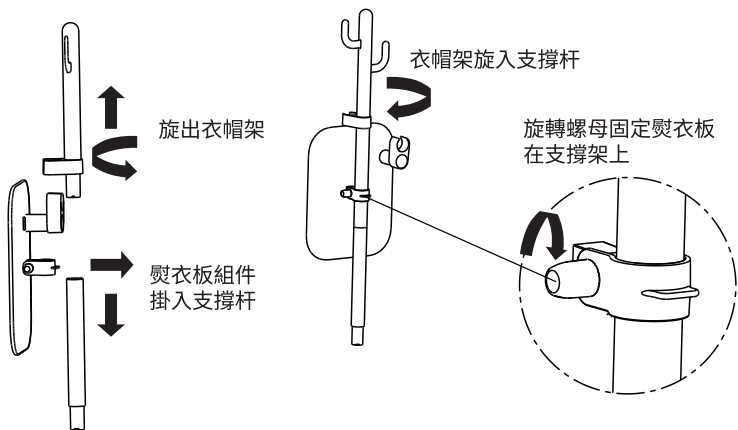
### 衣架組件安裝

如圖所示，將燙頭架組件旋入支撐桿頂部。

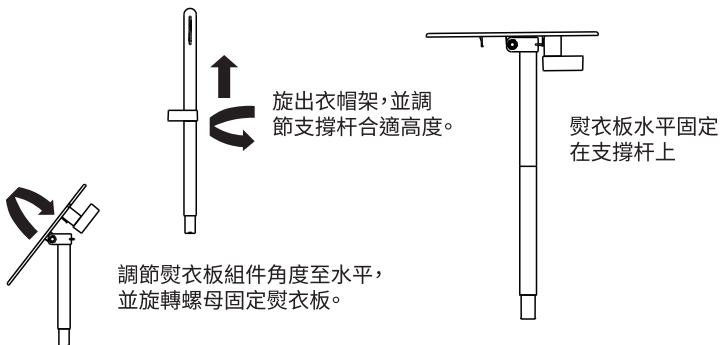


## 熨衣板組件安裝

### 掛熨模式

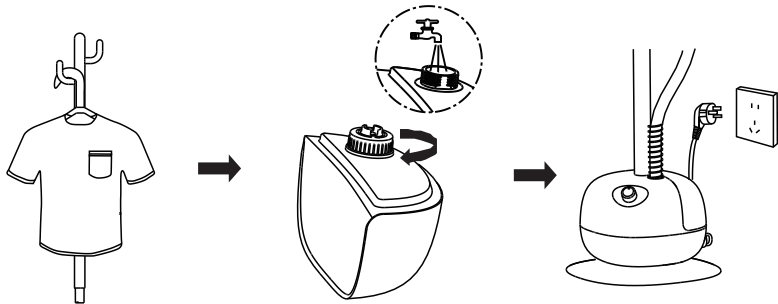


### 平熨模式



## 基本操作步驟

### 準備熨燙



掛好須熨燙的衣物。

在水箱中加水，為了延長掛熨的使用壽命，建議使用純淨水或蒸餾水。

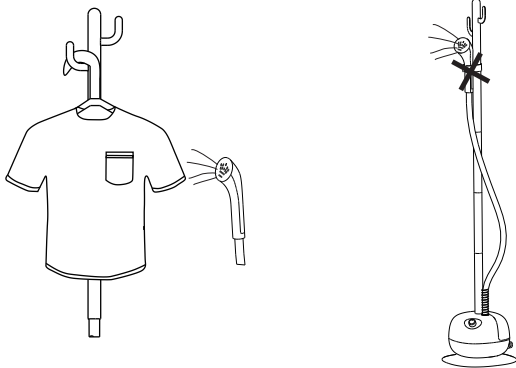
將水箱放回產品上，連接電源。

### 開始熨燙

插上電源後，旋轉旋鈕選擇合適檔位，產品進入加熱狀態，需要等待一會加熱後蒸氣噴出。

在正常使用過程，導氣管盡量垂直狀態工作，請勿彎折。

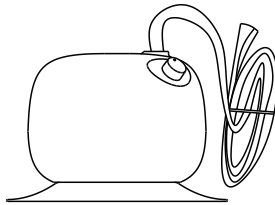
在正常使用過程，請勿將蒸氣噴頭掛在晾衣架或者熨燙板的燙頭架上持續出蒸氣，以防燙傷。



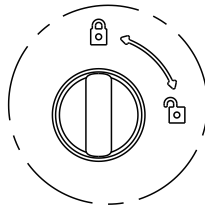
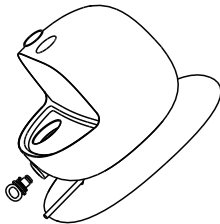


## 清潔與保養

1. 使用完畢後，請及時拔掉電源插頭。
2. 請勿使用強揮發性的清潔劑清洗。
3. 清洗掛燙機衣板的布套時，請勿與其他衣物混洗。
4. 請勿把產品浸入水中或其他溶液裡清洗。
5. 請勿將醋、洗潔精、鹽水溶液等化學品添加進水箱。
6. 清潔時請將電源插頭拔掉。
7. 產品除垢時，請勿使用帶腐蝕性的液體清潔，以免影響機器的安全使用。
8. 收納產品時，請勿將導氣管折彎存放；請將導氣管內水排乾淨，避免再次使用時管內積水從熨燙頭噴出。



9. 待關機冷卻30分鐘後，將產品移動到合適排水處，旋轉並拔出排水塞，排出機器內的水。長期存放機器時，需要使用後排走機器內部的水，以延長產品使用壽命。







## 常見問題

故障現象	原因分析	故障排除
開機後產品不運作	產品電路故障	聯繫售後服務部門進行維修
	電路故障或保險絲燒斷	聯繫售後服務部門進行維修
	電源插頭未插好	檢查電源插頭並插好
開機後產品運作， 但沒有噴出蒸氣	水箱水量不足	水箱加水後放回主機
	導氣管折彎	導氣管須在垂直狀態下工作
	發熱盤損壞	聯繫售後服務部門進行維修
漏水	整機內部漏水， 從底座底部溢出	聯繫售後服務部門進行維修
	水箱與主機連接處溢水	折管蒸氣回流，將折彎處拉直。 清洗發熱盤內水垢。



備註：經以上現象分析後仍無法排除故障，請與本公司維修點或經銷商聯繫，嚴禁非專業人員對本機自行拆裝。



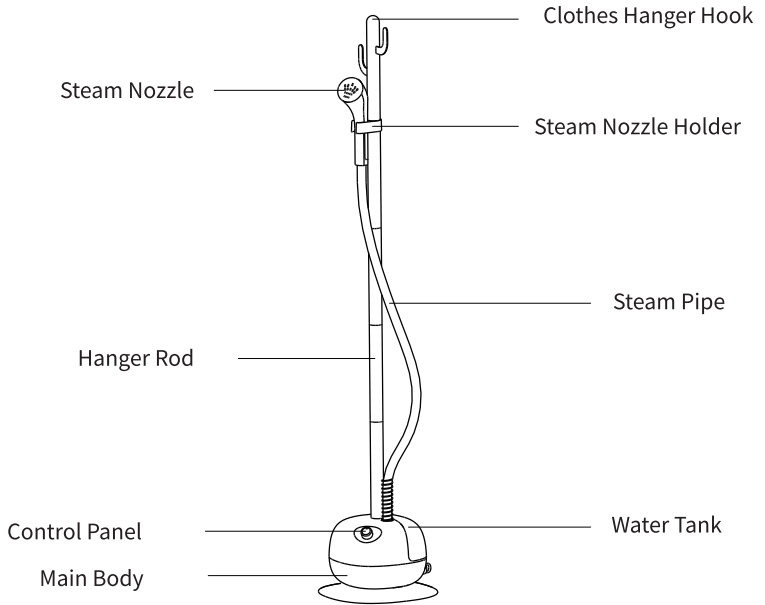
## 產品規格



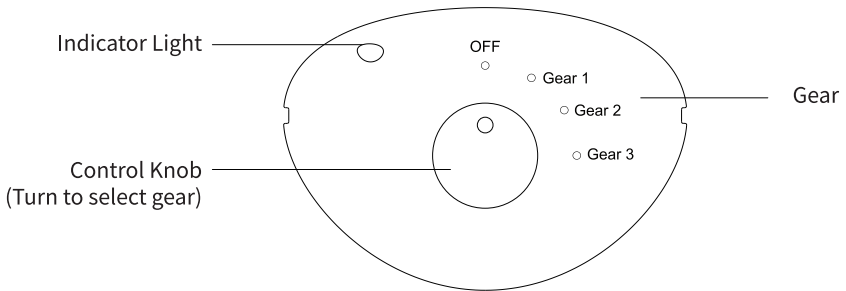
產品型號	GTJ-B15V1
電壓/頻率	220V~ 50Hz
水箱容量	1.5L
額定功率	1500W
產品尺寸	310x310x1607mm



## Product Overview



## Control Panel





# Instructions

## Safety Instructions

Strictly observe the following instructions to prevent any accidents or injuries:

- Do not connect this appliance directly to a DC power source.
- Do not disassemble by yourself. Disassembly and repair are not allowed except for professionals, otherwise it may cause fire, electric shock and personal injury.
- Do not use other high-power appliances on the same socket to avoid circuit overload.
- This appliance cannot be used by children and persons with reduced physical, sensory or mental capabilities or lack of experience and knowledge, but only if they have been given supervision. Great care is necessary in using the appliance, especially near children. Please place the appliance out of reach of children. The appliance must be used and set aside on a stable surface.
- Do not use appliances with obvious damage or leakage after falling. Please check the plug and power cord before connecting the power cord. If the power cord is damaged, it must be replaced by the manufacturer, its repair or similar professionals to avoid danger.  
Please ensure that the power plug is dry before use.
- The maximum weight load of the product should not exceed 4kg.
- Please lift the machine before moving the product. It is forbidden to pull the power cord and steam pipe.  
Do not use the product in a high place, such as a table or chair. Please ensure that the whole machine is flat and stable before operation. To prevent the machine from overturning or water overflowing. Before using, ensure the hanger rods are fully assembled: put the steam head on the steam head frame. Preheat the steam guide pipe and place it correctly. Do not fold the tube for use.
- Do not use this product for purposes other than the ironing of clothes. Do not leave while the machine is powered on.  
Do not heat when the water volume is insufficient.
- Unplug the power cord before adding water.
- While in use, please pay attention to the appliance to prevent the danger of steam splashing. Do not turn the steam outlet head towards people to avoid scalding.

- While in use, the outlet is high temperature. Do not touch it to avoid scalding.
- While in use, it will generate high temperature steam. Do not use it on clothes with poor heat resistance (such as leather clothes), which will cause deformation, discoloration. Do not permit the outlet to people to avoid scalding.
- While in use, do not contact the power cord with the heating surface of the machine, such as: near the outlet pipe and the guide pipe.
- It is normal for the appliance to make a "purr" sound occasionally. Straighten the guide pipe upward to ensure a smooth steam outlet.
- During the appliance operation, do not bend or wrap the pipe excessively or keep the pipe in U-shaped state for a long time.
- Please unplug the power cord plug after use.
- When plugging and unplugging, please hold the plug, do not pull the power cord or wet hand operation.
- Before collecting the product, make sure the product has cooled and drain water from the machine.

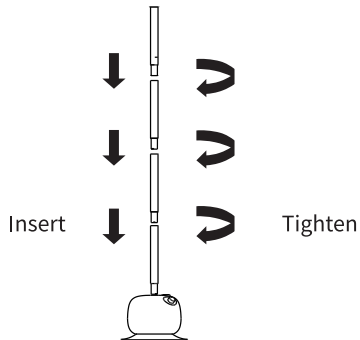
### Control Panel Operation Instructions

1. Turn the knob clockwise to start. For the first heating for each startup, it needs to preheat for a few seconds before steam ejection.
2. The adjustment knob can be selected in different gears.  
Gear 1 is recommended for silk and chemical fiber fabrics and clothes;  
Gear 2 is recommended for clothes made of cotton and hemp;  
Gear 3 is recommended for woolen and plush clothes.

## Installation Instructions

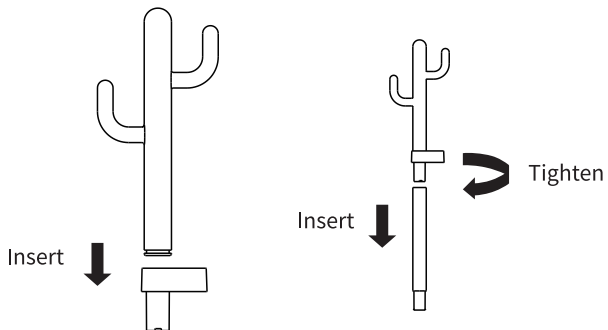
### Installation of the hanger rod

As shown, the height can be adjusted by splicing different numbers of support rods, and installed it in turn.



### Installation of the hanger head

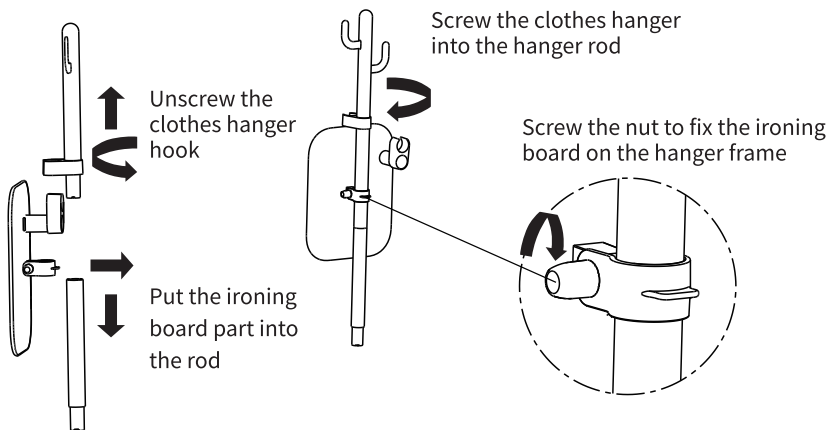
As shown, screw the hanger assembly into the top of the hanger rod.



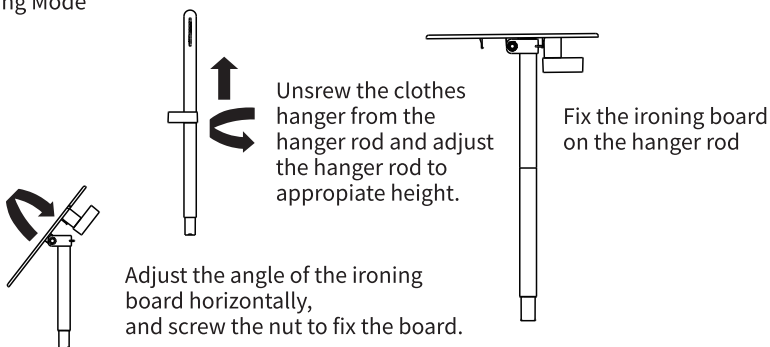
## Installation of the ironing board

The ironing board assembly is an optional accessory, the product you buy may be different from the instruction diagram, please refer to the physical object.

### Hanging Ironing Mode

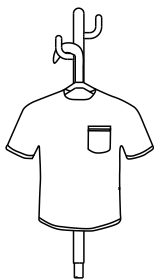


### Ironing Mode

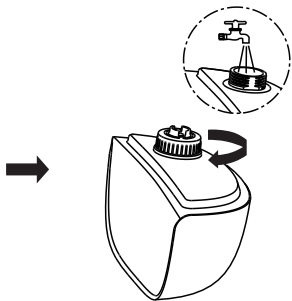


## Operating Instructions

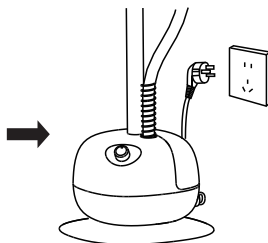
### Preparation before operation



Hang up the garment to be ironed.



Add water to the water tank. In order to prolong the service life of the appliance, it is recommended to use purified water or distilled water.



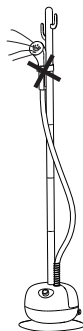
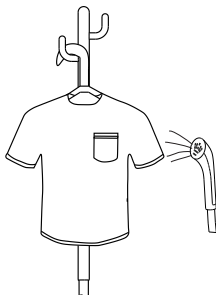
Put the water tank back on the appliance and plug in the power.

### Start Ironing

After the plug in the power, turn the knob to choose the gear, the appliance enters the heating status, need to wait for a while after the steam ejection.

During operation, the guide pipe works as vertically as possible, do not bend it.

During operation, do not hang the ironing head on the clothes hanger or ironing board to do steam work to prevent scald.

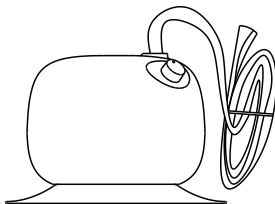




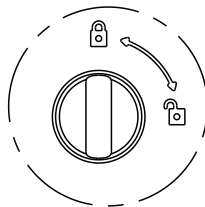
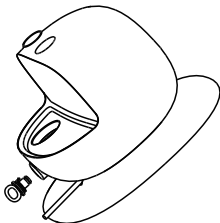


## Cleaning and Maintenance

1. Do not clean with the strong volatile solvent.
2. Do not put chemicals in the water tank.
3. Do not wash the cloth cover of ironing board with other clothes.
4. Do not immerse the product in water or with other containers for cleaning.
5. Do not put vinegar, cleanser essence, saline solution and other chemicals into the water tank.
6. During filling in water and cleaning, please unplug it.
7. When descaling, do not use corrosive liquid to clean it.
8. Do not bend the conductor pipe when you store it. Drain the water in the steam pipe to avoid the water gushing from the steam port of the ironing head when use again.



9. After turning off the power and cooling for 30 minutes, move the machine to a place suitable for draining the water, turn and pull out the drainage plug to drain the water in the machine. When it will not be used for a long time, it is necessary to drain the water inside the machine after using in order to extend the life of the product.





# Troubleshooting

Fault Description	Possible Cause	Solution
No response at startup	Product circuit failure	Ask professionals to check and repair
	Home circuit failure or fuse burned	Ask professionals to check and repair
	The power plug is not inserted	Insert the power plug
No steam at startup	No water or too little water in the water tank	Fill water in the water tank
	Steam guide pipe is bent	Place the steam guide pipe in a vertical position
	Heating plate is damaged	Ask professionals to check and repair
Water leakage	Whole machine inside leaks and overflows from the bottom of the base	Ask professionals to check and repair
	Water tank overflows at the connection with the machine	Fold the steam back and straighten the bend. Clean the scale in the heating plate



## Warning:

If the problem cannot be solved after the above troubleshooting, please contact the customer service center. It is strictly forbidden for non-professionals to disassemble the appliance.



# Specifications



Model No.	GTJ-B15V1
Voltage/Frequency	220V~ 50Hz
Capacity (Water Tank)	1.5L
Power	1500W
Dimensions	310x310x1607mm



[www.bears.com.hk](http://www.bears.com.hk)

**Distributor:**  
**HOMESTUFF INTERNATIONAL COMPANY LIMITED**

電郵 Email: [info@bears.com.hk](mailto:info@bears.com.hk)  
官方網站 Official Website: [www.bears.com.hk](http://www.bears.com.hk)

Find Us On

 [Bear Hong Kong](#)