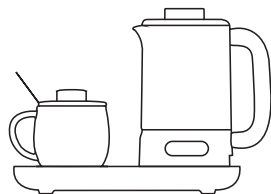


55°C泡煮暖暖壺
55°C HEALTH
BEVERAGE KETTLE



使用說明 USER MANUAL

i 使用產品前，請仔細閱讀本使用說明書。本產品僅限家居使用。

Before using the product, please read this user manual carefully and keep it for future reference. This product is intended for indoor use.

i 本說明書中產品設計、規格及功能僅供參考，實際產品功能和規格可能會有不同。產品資料如有更改，恕不另行通知。如中英文版本有差異時，應以中文版為準。

The product design, specifications and functions in this manual are for reference only. Actual product may vary. Product details are subject to change without prior notice. In case there is any inconsistency or conflict between English version and Chinese version of the terms, the Chinese version shall prevail.

Bear•為香港蝸居而誕生

成立於2006年3月，於2019年8月23日正式掛牌上市。

Bear微家電/小家電集合實用、多功能、簡約、時尚、小巧等多種特色，放在家裡每個角落，也能成為裝潢的一部分，營造出家居品味。這些特點讓 Bear成為香港小家庭及單身男女在選購小家電時的優先選擇。

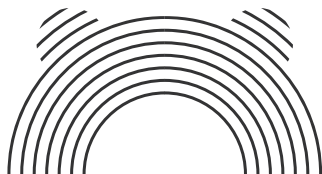
Bear以人為本，產品由入廚到生活家電，滿足你生活上各種需求，對於繁忙又對生活有要求的人，絕對是家中必備。

幸福就是那麼簡單！

Bear帶給你生活中的一點甜蜜幸福。無論是忙碌早晨的一片果醬鬆脆厚多士，夏日午後的一杯清新慢磨果汁，還是冬日睡前的暖暖花果茶。Bear為香港人繁忙的生活打造出片刻寧靜與優雅，療癒你的身心靈。

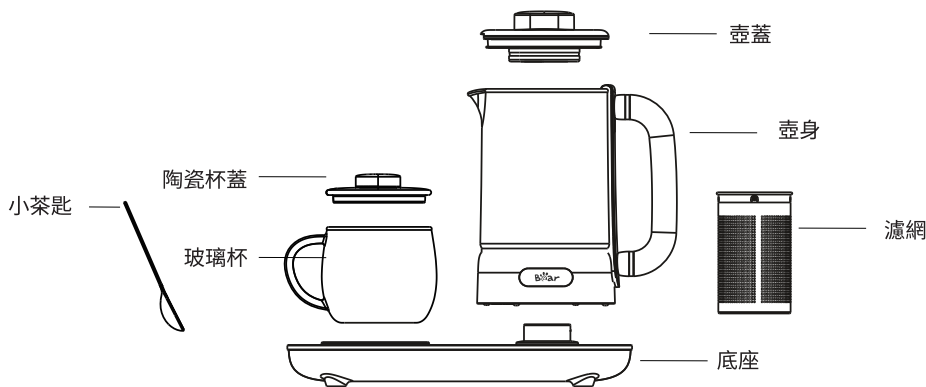
Bear•小餐桌上的廚樂

不需要大廚房，不需要巧手廚藝，只要一張小餐桌及Bear小廚具家電，你也做到的簡單料理，讓每個人也可體驗入廚樂趣。





產品簡介



控制面板



Ginseng	參茶
Coffee	咖啡
Soup	煲湯
Tremlla	雪耳
Dessert	甜品
Warm	保溫
Water	煲水
Flower	花茶

使用指南

安全注意事項

為防止觸電、火災、燙傷等事故，使用前請仔細閱讀並且遵循以下安全事項：

- 使用前請確保電源電壓與本產品銘牌上所標明的額定電壓一致。
- 請使用有接地保護的電源，以確保人身安全。
- 為避免熱斷路器的誤復位產生危險，請勿通過外部開關裝置供電，例如定時器或連接路由通用部件定時進行連接或斷電。
- 使用時產品應放置於穩固的平台上，並放置於兒童觸摸不到的地方。
- 請勿在地毯、塑料凳等不耐熱的表面或者附近使用，會因蒸氣受損的物體不要放置在本產品上方。
- 請勿把本產品置放在熱源的表面上或熱源旁，如烹調器、烘爐等。
- 如電源線有可見的損壞跡象或接觸不良現象，請勿使用。必須用專用軟線或由製造商或維修部買到的專用組件來更換。
- 請勿沿尖端物品或鋒利邊沿來拉扯電線、壓線或讓它懸垂下來，同時要遠離熱源和濕源。
- 請勿將金屬等異物插入散熱孔或間隙中，否則可能導致損壞或者觸電。
- 切勿擅自改裝產品或使用非生產商提供的零件進行維修，否則可能造成危險既令保修服務無效。
- 本產品在使用時嚴禁小孩以及肢體不健全、感覺或精神上有障礙或缺乏相關經驗和知識的人單獨操作，若有小孩在旁，須加倍小心使用本產品。切勿將本產品置於小孩能觸及的地方。
- 請勿將電源線、插頭、底座等浸入水或者其它液體裡，以免損壞本產品及觸電。
- 清潔前或不使用時，請關閉電源並拔下電源插頭，待產品完全冷卻後再進行清洗。
- 底座、電源線及其它部件有損壞時，請不要使用，並送到指定的維修服務點檢查維修。
- 產品使用時會產生蒸氣從玻璃蓋的蒸氣口排出，小心被蒸氣燙傷。
- 請勿注水超過最高水位線，如果水裝得太滿，水沸騰時有可能會溢出引致燙傷。
- 嚴禁將底座浸入水中或其他液體中清洗，以免機器進水導致損壞或發生危險。
- 水壺壺身僅限在原配底座上使用。
- 隨產品附帶的電源底座只用於本產品使用，切勿作其它用途。
- 首次使用本產品，應注水至最高水位，沸騰後倒掉並用冷水沖洗，重複操作二次。
- 請勿以濕手拔除電源線，否則可能導致短路或觸電等危險。
- 產品使用過程中，其壺身變熱是一種正常現象，倒水時，只能拿起手柄來提壺身，切勿用手接觸壺身的高溫表面，以免燙傷。
- 當水燒沸時，高溫水蒸汽會從壺嘴噴出易引起燙傷，注意不要靠近壺嘴方向。

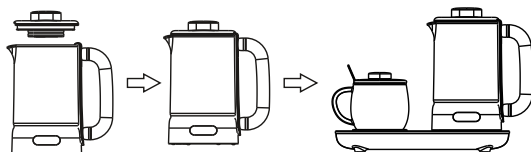
基本操作步驟

1. 按下“預約”鍵，可以進入預約時間的設置操作，選擇好預約時間後按下“功能”鍵，可以確認預約時間並進入功能選擇的操作，如無需預約功能，請跳過該步驟。
2. 按下“功能”鍵，可以進入功能選擇的操作，選擇好所需功能後按下“預約”鍵，可以確定功能並進入工作時間的選擇。
3. 選擇好功能後按下“預約”鍵，可以進入工作時間的設置操作，如無需調整所選功能的工作時間，請跳過該步驟；
4. 確認好工作時間後，等待5秒無操作，產品將自動進入工作狀態；
5. 長按左側“長按保溫”鍵，可以啟動底座左側保溫板的保溫功能，再次輕按按鍵，則保溫板停止工作；
6. 工作完成後，產品發出工作完成指示音，自動進入保溫。
7. 使用完成後，請拔掉插頭關機處理或壺身不要放在底座上。

功能操作

• 預約

以預約雪耳為例：早上7點將洗乾淨泡發好的雪耳放入壺中，蓋上壺蓋後將壺身放置到底座上，調整程序預約早上10點開始加熱煮雪耳。



接通電源，操作面板數字屏幕顯示“0:00”即為待機狀態。



按下“Timer”鍵，進入預約時間的設置，此時預約指示燈閃亮顯示，數字屏幕閃亮顯示“0:30”，即預約30分鐘。



反覆按下“Timer”鍵，調整所需要的工作時間，此時數字屏幕顯示所選擇的工作時間。



按下“Function”鍵，進入功能選擇的設置，反覆按下“Function”鍵，選擇所需要的銀耳功能，此時預約指示燈變成常亮顯示，銀耳指示燈閃亮顯示，數字屏幕常亮顯示“1:30”。



反覆按下“Timer”鍵，調整所需要的工作時間，此時數字屏幕顯示所選擇的工作時間。



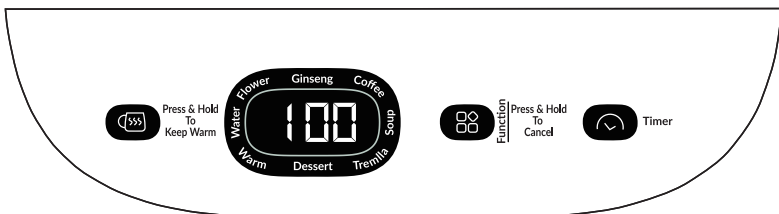
等待5秒無操作，產品將進入預約工作，此時數字屏幕倒計時顯示預約時間。



到10點整預約時間結束，產品開始加熱工作，此時預約指示燈熄滅，數字屏幕顯示水溫，待水溫到達沸點後顯示工作倒計時時間。

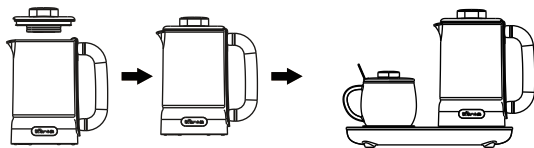


當工作完成後，產品發出“滴滴...”的響聲，銀耳指示燈熄滅，保溫指示燈常亮顯示，數字屏幕顯示水溫98°C以上。



煲水·咖啡功能

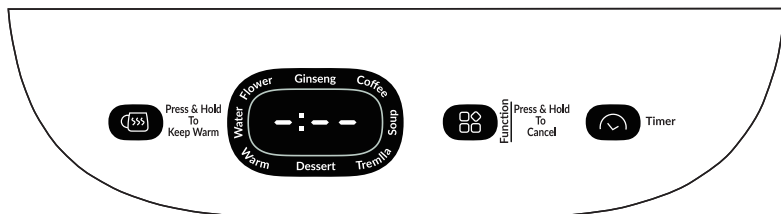
以燒水為例，加入適量的水（不超過最高水位線0.6L），蓋上壺蓋，再將壺身放置到底座上。



接通電源，操作面板數字屏幕顯示“0:00”即為待機狀態。



按下“Function”鍵，進入功能選擇的設置，反覆按下“功能”鍵，選擇所需要的煲水功能，此時煲水提示燈閃亮顯示，數字屏幕常亮顯示“-:--”。



等待5秒無操作，產品將進入煲水工作，此時煲水提示燈常亮顯示，數字屏幕顯示水溫。



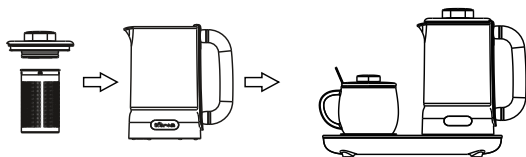
當工作完成後，產品發出“滴滴……”的提示聲，自動進入保溫狀態，煲水指示燈熄滅，保溫指示燈常亮顯示，數字屏幕顯示水溫98°C以上。



i 溫馨提示：水燒開後，在半小時至1小時內，水溫會慢慢下降，環境溫度越低下降得越快，最終降至保溫溫度。

花茶、參茶功能

以煮花茶為例。將花茶放到濾網裡面，再將濾網扣到壺蓋下方，往壺身內加入適量的水(不超過最大水位線0.6L),蓋上壺蓋，並將壺身放置到底座上。



接通電源，操作面板數字屏幕顯示“0:00”即為待機狀態。



反覆按下“Function”鍵，選擇所需要的花茶功能，此時花茶指示燈閃亮顯示，數字屏幕常亮顯示“0:05”。



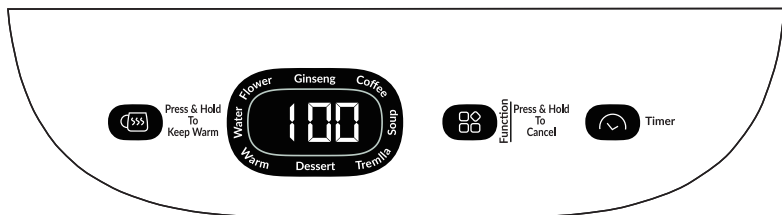
按下“Timer”鍵，調整煮花茶所需要的工作時間為6分鐘，此時煮花茶指示燈常亮顯示，數字屏幕閃亮顯示“0:06”。



確認好功能設置後，等待5秒無操作，產品將進入煮茶工作，此時花茶指示燈常亮顯示，數字屏幕顯示水溫，待水沸騰後顯示工作倒計時時間。



當工作完成後，產品發出“滴滴...”的提示聲，自動進入保溫狀態，煮花茶指示燈熄滅，保溫指示燈常亮顯示，數字屏幕顯示水溫98°C以上。



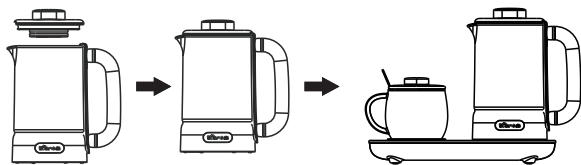
溫馨提示：

水煮沸後，在半小時至1小時內，溫度會下降並維持在設置的保溫溫度，並可以保溫12小時。

• 燉煮

包括煮粥、雪耳、甜品等功能。

以煮雪耳為例。將洗乾淨泡發好的雪耳切碎放入壺身中，加入適量的水（不超過最高水位線 0.6L），蓋上壺蓋，將壺身放置到底座上。



溫馨提示：

煮一些易發泡的湯或甜品時，如有溢出現象，下次燉煮時最大水量可按500毫升，比最高水位低100毫升或者減少食材數量。

接通電源後，操作面板數字屏幕顯示“0:00”即為待機狀態。



按下“Function”鍵，選擇所需要的雪耳功能，此時雪耳指示燈閃亮顯示，數字屏幕常亮顯示“1:30”。



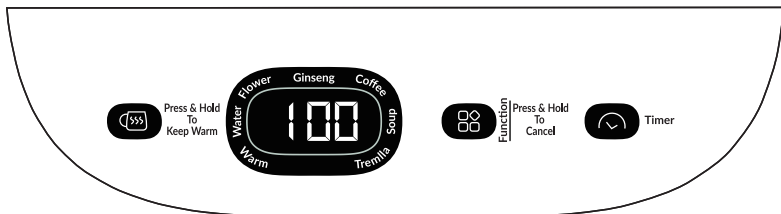
按下“Timer”鍵，調整煮雪耳所需要的工作時間為2小時，此時雪耳指示燈常亮顯示，數字屏幕閃亮顯示“2:00”。



確認好功能設置後，等待5秒無操作，產品將進入煮雪耳工作。此時雪耳指示燈常亮顯示，數字屏幕顯示水溫，待水沸騰後顯示工作倒計時時間。



當工作完成後，產品會發出“滴滴……”的提示聲，自動進入保溫狀態，雪耳指示燈熄滅，保溫指示燈常亮顯示，數字屏幕顯示水溫98°C以上。



i 溫馨提示：水煮沸後，在半小時至1小時內，溫度會下降到50-60°C，並可以保溫12小時。

• 保溫

產品的保溫時間為12小時，不可調整，保溫溫度默認為55°C（40-90°C範圍內可調）。產品加熱工作完成後，會自動進入保溫狀態。

• 直接保溫

待機狀態下，按下“Function”鍵可以選擇保溫功能，操作面板顯示保溫溫度（默認55°C），反覆按下“Timer”鍵可以調節自己所需的保溫溫度，等待5秒後，產品進入保溫工作。

i 溫馨提示：只選擇保溫功能，不選其他功能時，水不能燒開，加熱到設定溫度就按設定溫度進行保溫。

• 保溫板保溫

長按底座左側“Press&Hold To Keep Warm”鍵，可以啟動保溫板保溫工作，此時長按保溫指示燈亮。

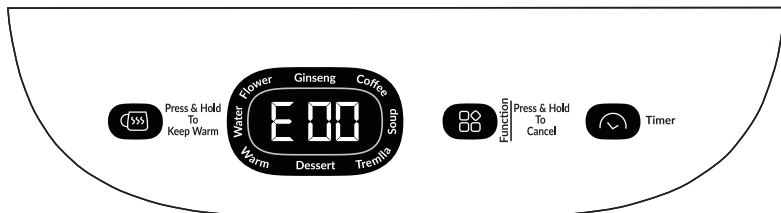


保溫板工作時，按下“Press&Hold To Keep Warm”鍵，保溫板停止保溫工作。



• 其他功能

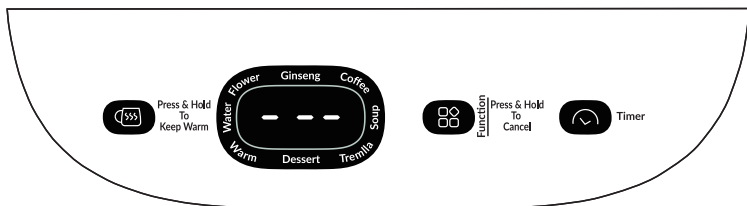
乾燒狀態：當壺中的水被燒乾時，產品會發出“滴滴...”提示聲，數字屏幕顯示為“E00”，加水冷卻之後才會回到初始待機狀態。



提壺斷電記憶：當壺身在工作中被提起時，產品發出“滴”一聲，數字屏幕顯示“000”，10分鐘內將壺身放回底座上，產品將繼續按照原設定的功能設置繼續工作，若超過10分鐘沒有將壺身放回底座，則產品回到待機狀態。



關機睡眠：待機狀態下，產品持續10分鐘無操作，將進入關機狀態，此時數字屏幕顯示“--”，指示燈熄滅。



功能設置參考

功能	默認顯示	最大設置	最小設置	保溫溫度	最大容量
煲水	—	—	—	55°C	0.6L
花茶	0:05	0:20	0:01	55°C	0.6L
參茶	0:10	0:40	0:10	60°C	0.6L
咖啡	—	—	—	80°C	0.6L
煲湯	1:30	2:00	0:05	55°C	0.6L
雪耳	1:30	2:30	1:00	55°C	0.6L
甜品	1:30	3:00	0:30	55°C	0.6L
保溫	55°C	90°C	40°C	55°C	0.6L
預約	0:30	9:30	0:00	/	/



清潔與保養

• 清除水垢

1. 水垢是水加熱時自然形成的鈣質沉澱物，它常粘附在壺內壁及發熱盤上，會影響壺身的使用壽命及水的品質，所以應定期清除；
2. 正常使用中，一般一年除垢兩次（根據各地水質不同而定）；
3. 用醋和水按照：L：2的比例混合裝入壺身到“最大”位置，然後加熱煮沸；
4. 讓混合液在壺身中保存24小時之後將混合液倒掉，再裝入清水到“最大”位置，使壺身重新加熱煮沸一遍；
5. 倒掉沸水後便完成水垢清除工作，最後用清水清洗壺身內部。

• 清除食物殘留物

每次使用完成後要把殘留物清除乾淨，往壺身內加入少量的清水和清潔劑，用柔軟的布或海綿擦洗壺身內面，擦洗乾淨後倒掉壺身內的水，再用清水清洗壺身內面至水乾淨，倒掉壺身內的水，用乾淨的布擦乾淨，不可用水直接清洗產品外表面。

• 外觀清潔

水壺外部髒污，可以用濕毛巾和適量清潔劑擦拭，不可用水直接清洗產品外表面。擦拭時，切勿插上電源插頭。



注意：

1. 使用完畢後，必須拔下電源插頭，然後待機體冷卻後才開始清洗。
2. 切勿將壺身或底座浸入水中，不能用腐蝕性清潔劑，應用中性的清潔劑。
3. 請勿使用天拿水、汽油、去污粉、硬質刷或不銹鋼絲球等來擦拭，以免破壞產品表面。
4. 產品長時間不使用時，請清潔擦淨，裝入包裝箱中，放於通風和乾燥的地方，以免受潮，影響使用。



常見問題

• 數字屏幕無顯示

是否停電？

電源線插頭是否插入插座中？

電源插座是否處於關閉狀態？

• 食材未煮透

設定的功能是否選擇正確？

工作時間是不是調少了？

壺身內加的水太少？

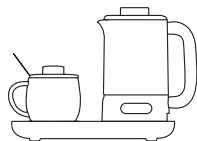


備註：

經以上現象分析後仍無法排除故障，請與本公司維修點或經銷商聯繫，嚴禁非專業人員對本機自行拆裝。



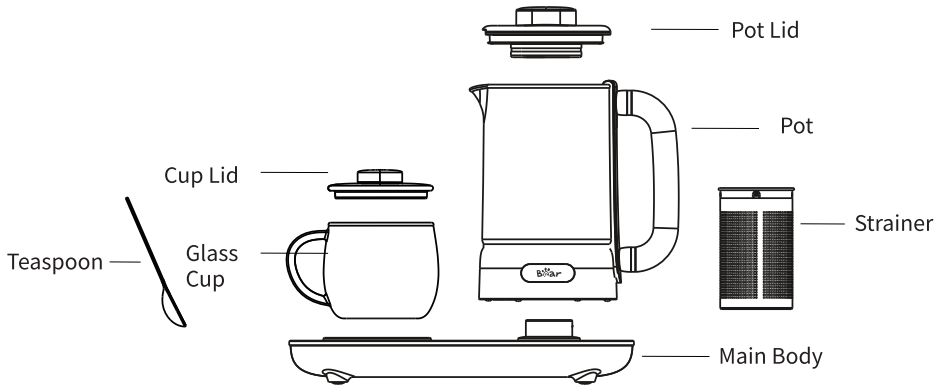
產品規格



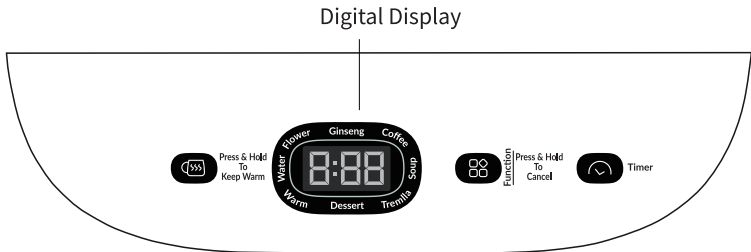
產品型號	BHP-G06L
電壓/頻率	220V~ 50Hz
額定容量	0.6L
額定功率	500W
產品尺寸	307x163x223mm



Product Overview



Control Panel





Instructions

Safety Instructions

Strictly observe the following instructions to prevent any accidents or injuries:

- Before use, please ensure that the power supply voltage is consistent with the rated voltage indicated on the nameplate of this product.
- Please use a power supply with grounding protection to ensure safety.
- To avoid danger from resetting thermal cut-out, the device should not be powered with external switch device, such as timer or timed open/close circuit of general parts.
- Please use this product on a stable platform and out of the reach of children.
- Do not use this product on or near heat-labile surfaces such as carpets and plastic stools. Do not place objects that will be damaged by steam on top of this product.
- If the product is dry-burning, please add water to the pot or unplug the power supply. Do not touch the heating element to prevent burns. Please unplug the power supply when the product is not in use to avoid continuous dry-burning damage to the product.
- Do not place this product on or near heat sources such as cookers, ovens, etc.
- Do not use this product if there are visible signs of damage or poor contact on the power cord. It must be replaced with a dedicated cord or dedicated components bought from the manufacturer or maintenance department.
- Do not pull, crimp, or dangle wires along pointed objects or sharp edges, and keep away from heat and moisture sources.
- Do not insert foreign objects such as metal into the heat dissipation holes or gaps. It may cause damage or electric shock.
- This appliance cannot be used by children and persons with reduced physical, sensory or mental capabilities or lack of experience and knowledge, but only if they have been given supervision. Great care is necessary in using the appliance, especially near children. Please place the appliance out of reach of children.
- Do not immerse the power cord, plug and the whole machine in water or other liquids to avoid damage to the product and electric shock.
- electricity shock.

- During the use of the product, it is normal for the body to get hot. When pouring water, you can only lift the body with the handle. Do not touch the body with your hands to avoid scalding.
- The pot should only be used on the original body.
- The power body attached with the product is only available for this product. Do not use it for other purposes.
- When using this product for the first time, fill it with water to the highest level, pour it away after boiling and wash it with cold water.
- Do not fill water exceed the maximum water level mark, otherwise there may be water gushing when boiling water.
- When the water is boiling, the high temperature steam will eject from the spout and easily cause burns. Do not get close to the spout.

Operating Instructions

Press the "Timer" key to enter the operation of setting the required time. After selecting the required time, press the "Function" key to confirm the required time and enter the operation of selecting the function. If the selected function is not required, skip this step.

Press the "Function" button to enter the operation of function selection. After selecting the required function, press the "Timer" button to determine the function and enter the selection of working time.

After selecting a function, press the "Timer" key to enter the operation of setting the working time. If you do not need to adjust the working time of the selected function, skip this step.

After determining the working time, wait 5 seconds for no operation, the product will automatically enter the working status;

To activate the thermal insulation function of the thermal insulation board on the left side of the body, hold down the "Press & Hold To Keep Warm" button on the left side, and gently press the button again to stop the thermal insulation board.

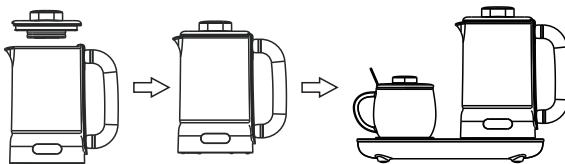
After the work is finished, the product will give out the sound indicating the completion of the work and automatically enter the insulation.

After use, please remove the plug to turn off the machine or do not put the kettle on the base.

Function Operation

• Function

Take cooking tremella for example: clean and soak tremella into the pot at 7 in the morning, cover the lid and place the pot body on the bottom seat, adjust the procedure and make reservation at 10 in the morning to start heating and boiling tremella.



Switch on the power supply, and 0:00 on the control panel indicates standby status.



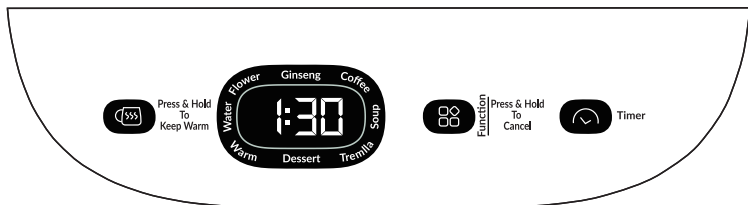
Press the "Timer" button to enter the setting of function time. At this time, the function indicator flashes and the digital tube flashes "0:30", that is, the order takes 30 minutes.



Press the "Timer" button repeatedly to change the function time to 3:00, that is, 3 hours.



Press the "Timer" button repeatedly to adjust the required working time, and the digital display will show the selected working time.



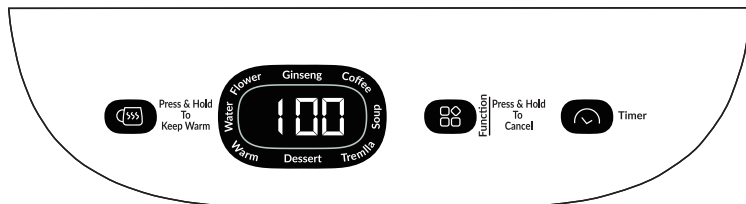
If there is no operation after 5 seconds, the product will enter the reservation work. At this time, the digital display countdown shows the reservation time.



When the reservation time ends at 10 o'clock, the product begins to heat. At this time, When the reservation time ends at 10 o'clock, the product begins to heat. When the water temperature reaches the boiling point, the countdown time is displayed.

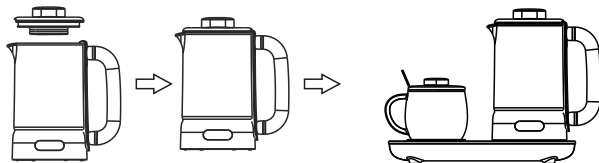


When the work is done, there is "beep" sound. The indicator light is off, insulation light on display, digital display show that water temperature is above 98°C.



Boiling Water, Coffee Function

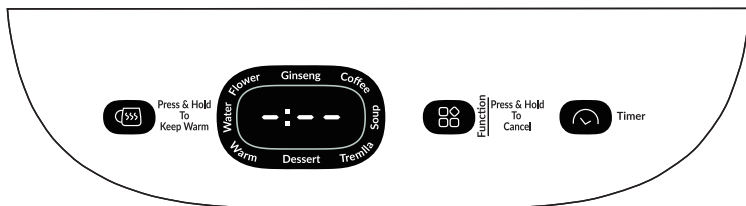
Take boiling water as an example, add an appropriate amount of water (not more than 0.6L, the maximum water level), put the lid on, and then place the pot on the body.



Switch on the power supply, and "0:00" on the control panel indicates standby status.



Press the "Function" key to enter the setting of function selection. Press the "Function" key repeatedly to select the required boiling water function. At this time, the boiling water indicator is flashing and the digital display is steady on and the "-:--" is displayed.



Wait 5 seconds for no operation, the product will enter the boiling water work, at this time the boiling water indicator is steady on display, the digital display shows the water temperature.



When the work is done, there is "beep" sound. It will automatically change to the warm keeping status, the boiling water indicator light off, warm keeping indicator light on display, digital tube display water temperature above 98°C.

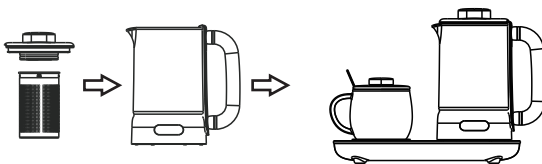


i Reminder:

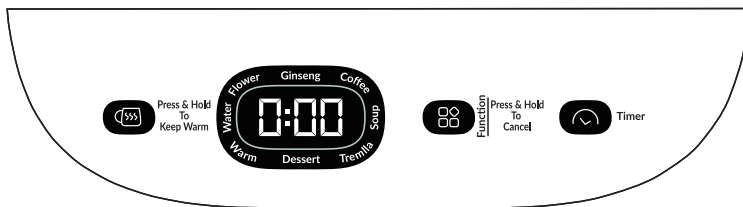
After boiling water, in half an hour to an hour, the water temperature will eventually drop, the lower the ambient temperature will drop more quickly, and finally to the holding temperature.

Flower Tea, Ginseng Tea Function

Take cooking scented tea as an example. Put the scented tea inside the strainer, buckle the strainer under the lid, add an appropriate amount of water to the body of the kettle (not more than 0.6L, the maximum water level), close the lid, and place the body on the bottom seat.



Switch on the power supply, and 0:00 on the operation panel indicates standby status.



Press the "Function" button repeatedly to select the desired flower tea function. At this time, the flower tea indicator light flashes and the digital tube is steady on and shows "0:05".



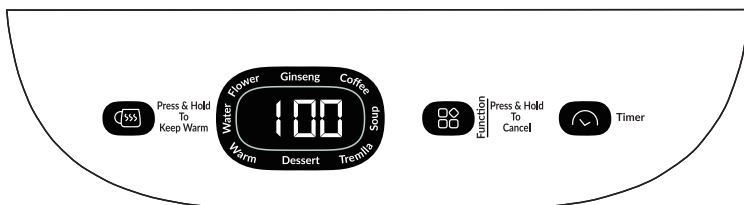
Press the "Timer" button and adjust the working time required to cook scented tea to 6 minutes. At this time, the tea cooking indicator is steady on and the digital tube shows "0:06".



After confirming the function setting, wait 5 seconds for no operation, and the product will enter the tea cooking work. At this time, the flower tea indicator is steady on, the digital tube shows the water temperature, and the countdown time is displayed after the water boils.



When the work is done, there is "beep" sound. It automatically change to the heat preservation state, tea boiling indicator light off, heat preservation indicator light on display, digital display show that the water temperature is above 98°C.

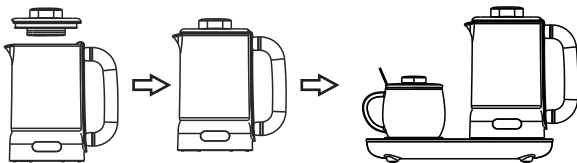


Reminder:

After boiling water for half an hour to an hour, the temperature will drop and remain at the set heat preservation temperature, and can be kept warm for 12 hours.

• Simmer

Including porridge, tremella, dessert and other functions.



Take boiled tremella for example. Clean and soak the tremella chopped into the body, add an appropriate amount of water (not more than 0.6L of the maximum water level), cover the lid, put the body on the bottom seat.



Reminder:

When cooking some soups or desserts, if there is overflow, the maximum amount of water in the next stew can be 500 ml, 100 ml lower than the maximum water level or reduce the number of ingredients.

Switch on the power supply. If 0:00 is displayed on the operation panel, the standby state is displayed.



Press the "Function" button to select the desired tremella function. At this time, the tremella indicator light flashes and the digital tube is steady on and shows "1:30".



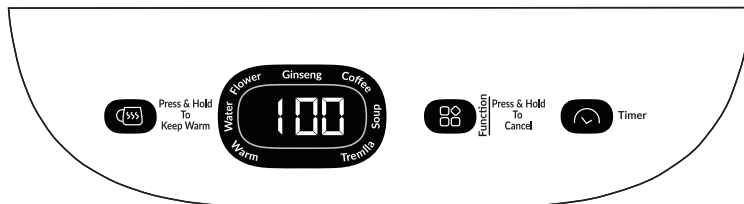
Press the "Timer" button to adjust the working time required for cooking tremella to 2 hours. At this time, the tremella indicator is steady on and the digital tube shows "2:00".



After confirming the function setting, wait 5 seconds for no operation, the product will start to cook tremella. At this time, the tremella indicator light is steady on, the digital display shows the water temperature, and the countdown time is displayed after the water boils.



When the work is done, there is “beep” sound. It automatically changes into the heat preservation status, tremella light off, heat preservation light on display, digital display show that the water temperature is above 98°C.



Reminder:
After boiling water, the temperature will drop to 50-60°C after half an hour to an hour, and can be kept warm for 12 hours.

• Keep warm

The insulation time of the product is 12 hours and cannot be adjusted. The default insulation temperature is 55 °C (adjustable within 40-90 °C). After the product is heated, it will automatically enter the heat preservation state.

• Direct keep warm

In standby mode, you can select the thermal insulation function by pressing “Function”.

The thermal insulation temperature is displayed on the digital display (55°C by default). You can adjust the thermal insulation temperature by pressing Heat Preservation repeatedly.

Reminder:
If only the heat preservation function is selected and other functions are not selected, the water cannot be boiled. Heat to the set temperature and keep warm according to the set temperature.

Thermal Insulation Board

Hold down the "hold down heat preservation" button on the left side of the base to start the thermal insulation board. At this time, hold down the heat preservation indicator to light up.



When the thermal insulation board is working, press "Long press thermal insulation" to stop the thermal insulation board.

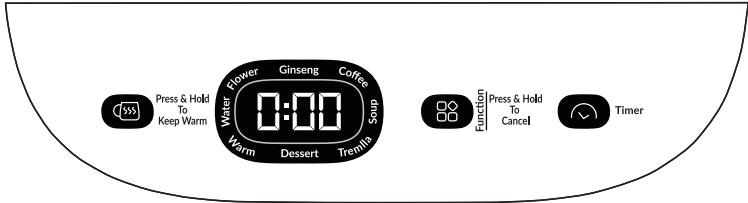


Other Function

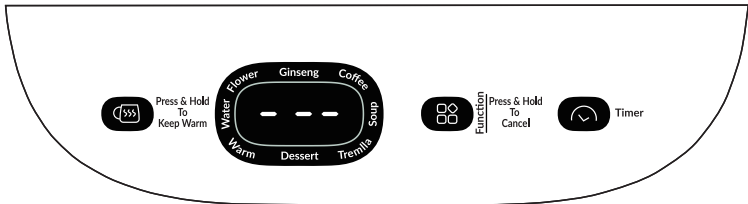
Dry burning: When the water in the pot is dry, the product will emit "drops..." Sound, digital tube display as "E00", add water after cooling will return to the initial standby state;



Memory of power-off for lifting the kettle: when the kettle is lifted at work, the product will make a drip sound and the digital tube will show "0:00". Put the kettle back on the base within 10 minutes, and the product will continue to work according to the original function Settings. If the kettle is not put back on the base within 10 minutes, the product will return to standby state.



Shutdown sleep: in standby state, the product will enter shutdown state if there is no operation for 10 minutes. At this time, the digital tube will display "- - -" and the indicator light will be off.



Function Setting Reference

Function	Default Dsisplay	MAX	MIN	Keep Warm	MAX Capacity
Boil Water	—	—	—	55°C	0.6L
Flower Tea	0:05	0:20	0:01	55°C	0.6L
Ginseng Tea	0:10	0:40	0:10	60°C	0.6L
Coffee	—	—	—	80°C	0.6L
Soup	1:30	2:00	0:05	55°C	0.6L
Tremella	1:30	2:30	1:00	55°C	0.6L
Dessert	1:30	3:00	0:30	55°C	0.6L
Keep Warm	55°C	90°C	40°C	55°C	0.6L
Timer	0:30	9:30	0:00	/	/



Cleaning and Maintenance

• Remove scale

Scale is a calcareous precipitate formed naturally when water is heated. It often sticks to the inner wall of the pot and the heating plate, which will affect the service life of the pot body and the quality of water, so it should be removed regularly.

In normal use, it is usually descaled twice a year (according to different water quality in different places);

Fill a pot with vinegar and water in a ratio of 1:2 to the "maximum" position, and bring to a boil.

Let the mixture keep in the kettle for 24 hours, then pour out the mixture, and fill it with water to the "maximum" position. Heat the kettle again and boil it again.

After pouring away the boiling water, scale removal is completed. Finally, clean the inside of the pot with clean water.

• Remove food residues

Remove residues after each use to clean, add a small amount of water and detergent into the pot body, with a soft cloth or sponge to scrub pot body inside, scrub clean after pour out the water inside the pot body, reoccupy clear water wash pot body inside to clean water, pour out the water inside the pot body, with a clean cloth to wipe clean, not directly with water surface cleaning products.

• Clean appearance

The external dirt of the kettle can be wiped with a wet towel and a proper amount of detergent, and the external surface of the product can not be cleaned directly with water.



Reminder:

1. After use, you must unplug the power plug, and then wait for the body to cooling before cleaning;
2. Do not immerse the pot or its base in water. Do not use corrosive detergent, but neutral detergent;
3. Do not use thinner, gasoline, detergent, hard brush or stainless steel wire ball to wipe so as not to damage the surface of the product.
4. When the product is not used for a long time, please clean it, put it in a packing box, and put it in a ventilated and dry place, so as not to be affected by moisture.



Troubleshooting

• No display on digital screen:

Is there a power cut?

Is the power cord plug inserted into the socket?

Is the power socket turned off?

• Ingredients undercooked:

Are the functions selected correctly and the working hours reduced?

Too little water in the kettle?

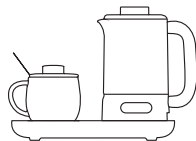


Warning:

If the problem cannot be solved after the above troubleshooting, please contact the customer service center. It is strictly forbidden for non-professionals to disassemble the appliance.



Specifications



Model	BHP-G06L
Voltage/Frequency	220V~ 50Hz
Capacity	0.6L
Power	500W
Dimensions	307x163x223mm



www.bears.com.hk

Distributor:
HOMESTUFF INTERNATIONAL COMPANY LIMITED

電郵 Email: info@bears.com.hk
官方網站 Official Website: www.bears.com.hk

Find Us On

 [Bear Hong Kong](#)