

# vytronix

Powerfully simple



JETW1800  
PRESSURE WASHER  
USER MANUAL

[www.vytronix.com](http://www.vytronix.com)

## **IMPORTANT SAFETY INFORMATION**

- **WARNING:** High pressure jets can be dangerous if subject to misuse. The jet must not be directed at any person or animal, live electrical equipment or the appliance itself.
- It is forbidden in the UK to clean surfaces containing asbestos with high pressure equipment.
- The appliance is designed solely for outdoor domestic use and NOT for commercial use.
- The recommended distance between the nozzle and surface to be cleaned is at least 30cm.
- It is your responsibility to check the suitability of surface to be cleaned, Vytronix cannot be held responsible for any damage caused by use.
- Please keep the appliance away from open fires and heat sources, do not leave exposed for prolonged periods of time to direct sunlight and avoid exposure to rain, snow or frost.
- Do not leave the appliance plugged in while unattended or not in use.
- Use only as described in this manual and use only the included attachments.
- Do not use if the cord or plug are damaged. If the appliance is not working as it should, has been dropped, damaged, left exposed to or submersed in water, please contact Vytronix.
- Do not pull or carry by the cord, use the cord as a handle, close doors on the cord, or pull the cord around sharp edges or corners.
- Do not unplug by pulling on the cord. To unplug, grasp by the plug.
- Do not handle the plug with wet hands.
- Do not put any foreign object into openings.
- Keep hair, loose clothing, fingers and all parts of body away from openings to avoid risk of injury.
- Turn all controls off before unplugging.

- If the power cord is damaged, it must be replaced only by Vytronix to comply with warranty terms and conditions.
- Do not let children or people who have not been trained in the use of a pressure washer nor read the instruction manual operate the machine unless properly supervised by a responsible adult.
- Before starting up your machine please check it carefully for any defects. If you find any, do not start up your machine and contact Vytronix immediately.
- Hold the pressure gun and lance firmly with both hands.
- The operator and anyone in the immediate vicinity of the site of cleaning should take action to protect them from being struck by debris dislodged during operation.
- Wear goggles or other eye protection during operation.
- Take special care when pointing at tyres and/or tyre valves as they may be damaged by the high-pressure jet, causing them to burst.
- This pressure washer must not be used at temperatures below 0°C.

### **ELECTRICAL CONNECTION**

If an extension cable is used, the plug and the socket must be waterproof and comply with the below mentioned requirements for length and cable dimensions.

- 1.0 mm<sup>2</sup> max. 12.5 m
- 1.5 mm<sup>2</sup> max. 20 m


### **WATER CONNECTION**

- Connection to the public mains water supply according to local regulations.
- Inlet connection can be connected to mains water supply with a max pressure of 10 bars.

### **IMPORTANT!**

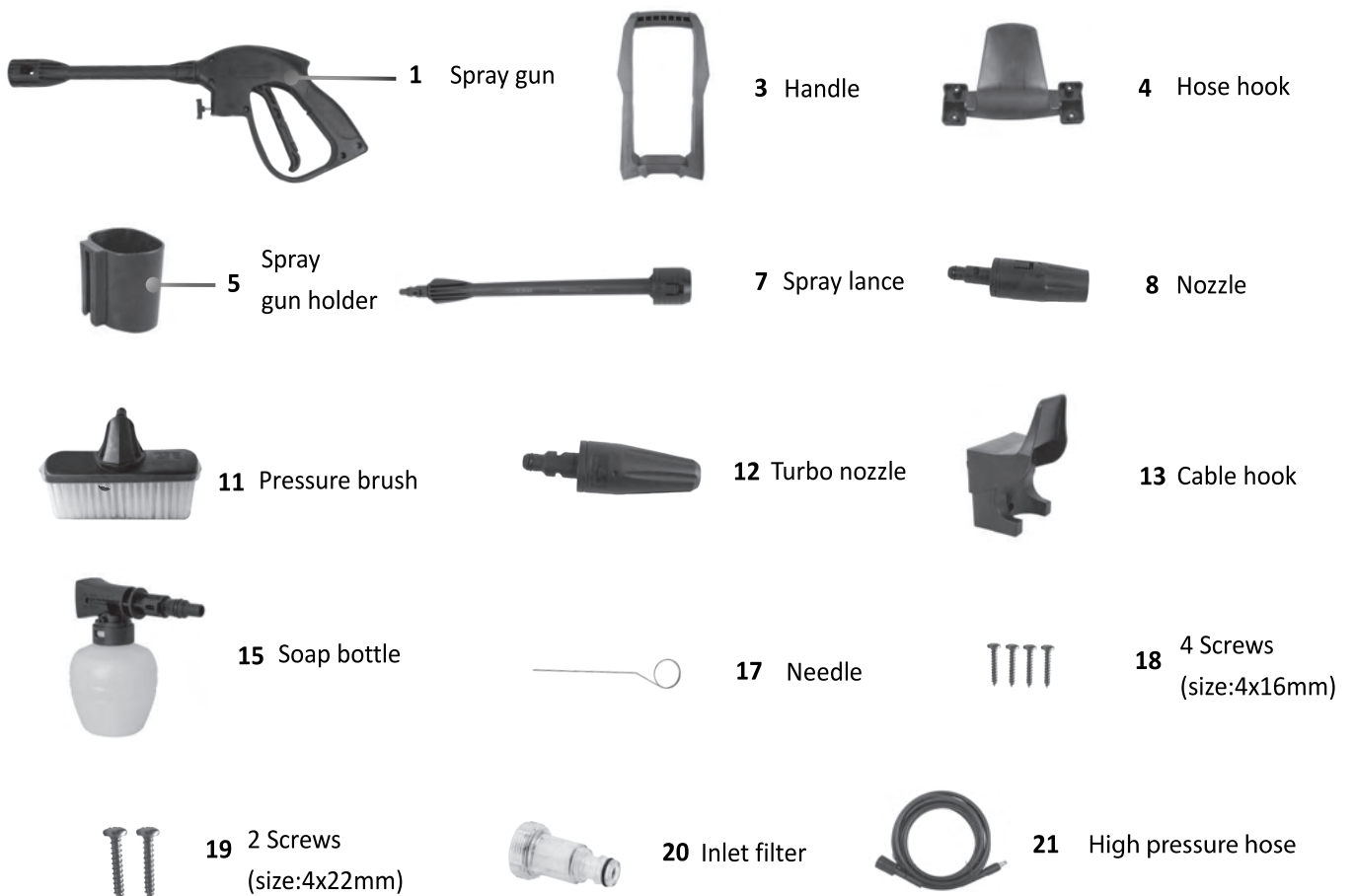
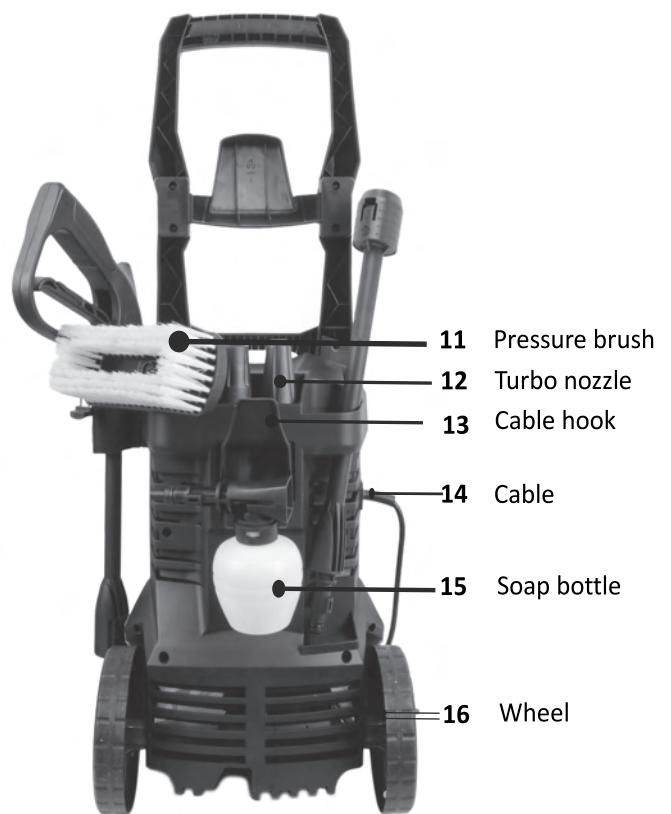
Only use water without any impurities. If there is a risk of sand particles in the inlet water (i.e. from your own well), an additional filter should be mounted.

## TECHNICAL DATA

Model:	JETW1800
Voltage:	230-240V 50Hz
Wattage:	1800W
Rated pressure:	90Bar
Max. Pressure:	135Bar
Flow:	6.0L/min
Degree of protection:	IPX5
Rated temperature:	0-40°C
N.W.:	9.1kg
Insulation class:	

**IMPORTANT:** This appliance is fitted with a thermal cut out system designed to cut the power to the motor in order to prevent overheating. If this occurs the appliance needs to be allowed time to cool down before carrying out filter and maintenance checks. To prevent the thermal cut out avoid using the appliance with any blockages and ensure the instructions and maintenance advice is adhered to.

# CONTENTS



## **ASSEMBLY**

### **Assembling spray gun holder**

Attach the holder at the right of the machine.



### **Assembling the handle**

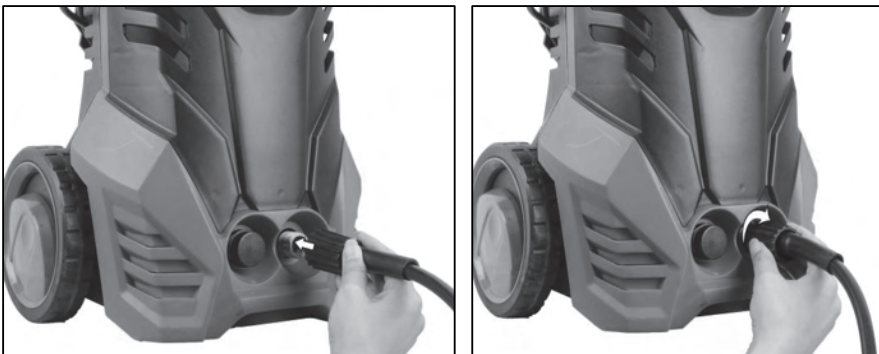
Slide the handle to the machine and fix two screws(size:4x22mm).

Install the hose hook on the long handle and fix four screws(size:4x16mm).

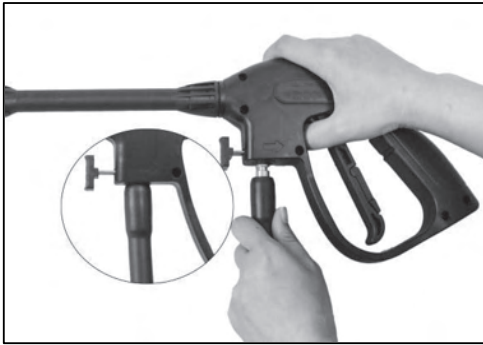


### **Assembling the pressure hose**

Push the pressure hose head into the water outlet as far as possible and tighten.

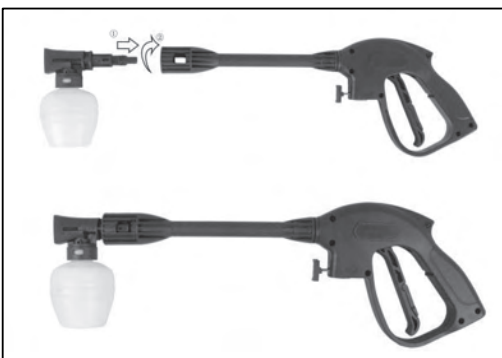
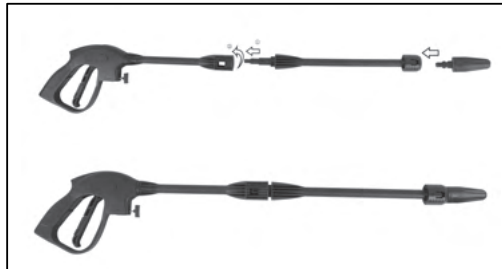


Push the other side of the hose head into the gun handle and it's full assembled when there is a "click".



### Connecting the Gun

Insert the spray lance/soap bottle into spray gun, and twist clockwise 1/4 turn. Insert the nozzle /turbo nozzle/pressure brush into spray lance.



### Safety lock of the spray gun

The lock button is to prevent from spray gun being engaged accidentally.

When the button is on "Lock", the spray gun will be locked.

Release the lock to operate the spray.

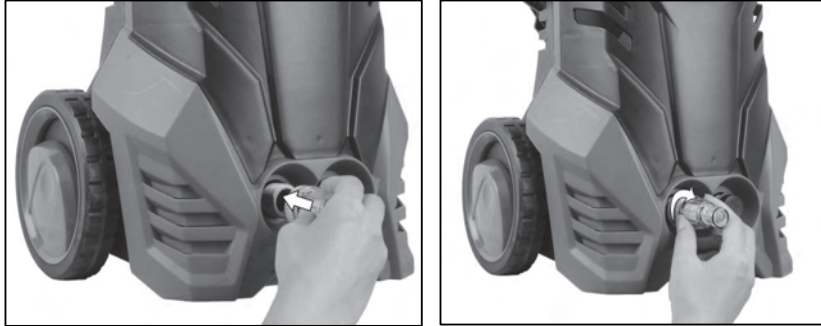


## Inlet filter connection

**WARNING! Do not turn on the machine.**

Please connect the inlet filter into the water inlet of the appliance and using a normal garden hose connect this to the water inlet.

Connect the other end of water inlet hose to water supply.





## **USING YOUR APPLIANCE**

**IMPORTANT!** Place the pressure washer on firm, level surface during operation, do not sit the pressure washer in long grass as objects may enter the vents or openings. Do not cover the machine during operation, use it indoors or in any area without adequate ventilation.

**IMPORTANT!** Do not leave the pressure washer switched on if leaving unattended for any length of time.

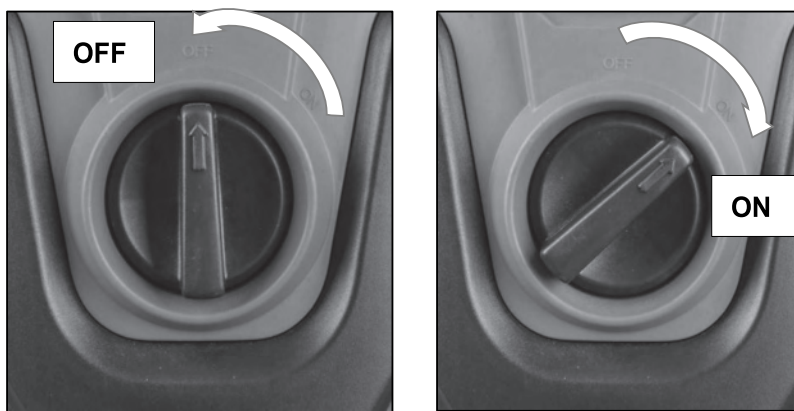
**IMPORTANT!** The pressure gun and lance are affected by a thrust during operation, therefore always hold it firmly with both hands before pulling the trigger and point the nozzle at the ground to begin with.

### **Power**

Connect to mains cable to a suitable power supply.

Turn on the garden hose water supply.

Turn the power switch to the on position.



### **Gun operation**

Once the spray gun lock is released the trigger can be pressed to start the water pressure flow, releasing this will stop the water pressure flow.

### **Using the adjustable spray lance**

The adjustable spray lance allows you to use any variety of spray patterns from a fan spray to a pencil jet spray. When using pressure washer to clean wood decks, siding, vehicles etc.

Rotate the nozzle to adjust the spray pattern from a narrow jet to a wide jet. TIP! Test on a discreet area to establish the suitable spray pattern to avoid damaging the surface of the material you are cleaning.



**CAUTION!** Do not adjust the nozzle while the trigger is squeezed to avoid injury.

### **Using the soap bottle**

If using detergent, add the soap bottle and use following the detergent instructions to obtain the correct mix of water and detergent.



### **Using the brush**

Replace the lance extension onto the gun and assemble the brush onto the end of the lance. TIP! The brush is ideal for patios and decking.

### **Switching off the appliance**

Turn off the water supply at the tap.

Press the trigger to reduce the pressure in the appliance.

Pull out the water inlet hose, then let the machine run a few seconds to drain the remaining water being stored in the pump.

Switch off the appliance and disconnect the mains cable from the power socket.

Detach the pressure hose. To drain the residual water, lift up the jet gun and squeeze the trigger.

**CAUTION!** Ensure the water is drained prior to storing to prevent spillages in packaging / storage areas.

### **After use instructions**

The appliance, hose and accessories should be fully dry before being stored.

The appliance should be stored in a dry frost-free storage area like a garden shed or garage. If the appliance is not completely dry and allowed to freeze, damage could be caused to the main motor or electrical components, making it unsafe for use.

**WARNING! Never use the appliance if it has been allowed to freeze or if the outside temperature is below freezing. Frost damage is not covered under the warranty and can result in dangerous pressure releases / bursts.**

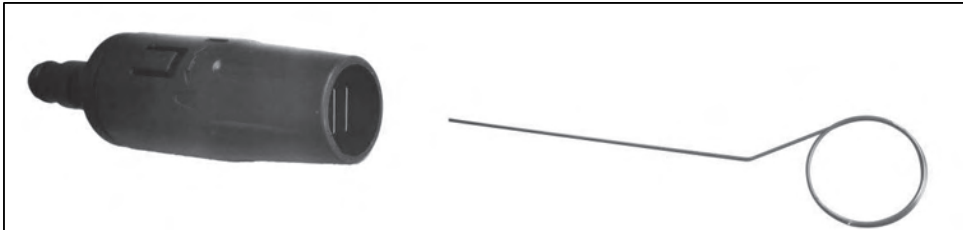
## **Maintenance and Troubleshooting**

To increase the lifespan of your pressure washer and its components, please take the following advice:

- **Warning! Disconnect from the electrical power supply before carrying out user maintenance. If the mains cable is damaged it must be replaced by the manufacturer or similarly qualified person to avoid a hazard.**
- We recommend you rinse through the mains water hose (not supplied) pressure hose, pressure gun, lance and jet nozzle with clean water before initial use or if the pressure washer has been stored for some time without any use.

### **Cleaning the nozzles**

Remove the spray lance from the spray gun; remove any dirt from the nozzle/turbo nozzle hole using the jet cleaning needle and rinse with water.



- Ensure threads and connections are free of dust, sand or grit.
- The inlet filter must always be fitted inside the water inlet pipe to filter out sand, limestone and other impurities, as they will damage the pump valves.
- Clean the water inlet filter regularly once a month or more frequently depending on frequency of use. Carefully loosen the filter with a screwdriver and rinse in clean water. Check that it is intact before re-mounting it.
- The outside of the pressure washer should be kept clean to ensure cooling air can pass freely through the vents, the outside must not be submersed in water but can be cleaned with a damp cloth. To avoid damage to plastics, no chemicals should be used to clean the pressure washer.
- To ensure easy connection of components and to prevent perishing of seals and O-rings, the threaded couplings and connections may be occasionally treated with an appropriate lubricating grease.
- Only allow repairs to be carried out by Vytronix.

## Troubleshooting Quick Guide

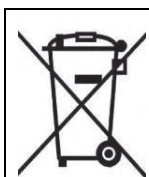
<b>Problem</b>	<b>Probable cause</b>	<b>Possible solution</b>
Appliance will not start	Appliance not plugged in <i>Defective socket</i> Fuse has blown <i>Defective extension cable</i>	Plug in appliance. <i>Try another socket.</i> Replace fuse. <i>Try without extension cable</i>
Water not releasing	The water filter is blocked. <i>Inlet connection is not correct</i>  The nozzle is blocked	Clean the filter. <i>Check the connection, tighten the seal. Check whether the hose is clogged.</i> Clean the nozzle with the jet cleaning needle, clean off with water and try again.
Water leaking from the pump.	The appliance will not start working.	Switch appliance off and contact Vytronix support
The appliance stops.	<i>The thermal protection may have switched the motor off to prevent overheating.</i> Fuse has blown / incorrect mains voltage <i>Nozzle partially blocked</i>	<i>Turn off the cleaner, Leave the appliance for a few minutes to cool down.</i> Check and change the fuse. Use the correct mains voltage. <i>Clean the nozzle with the jet cleaning needle and clean with water before trying again.</i>
Appliance pulsating.	Air in inlet hose/pump  <i>Inadequate supply of mains water specifications required</i>  Nozzle partially blocked  <i>Water filter blocked</i> Hose kinked	Allow machine to run with open trigger until regular working pressure resumes. <i>Increase water pressure, check for blockage of garden hose and/or change to bigger hose.</i> Clean the nozzle using the jet cleaning needle and clean with water before trying again. <i>Clean the filter</i> Straighten the hose.
Fluctuating pressure.	Pump is sucking air  <i>Water supply is insufficient</i>	Check the hoses and connections are airtight <i>Increase water pressure, check for blockage of garden hose and/or change to bigger hose.</i>

## **WARRANTY**

To register your free one year Vytronix guarantee visit [www.vytronix.com](http://www.vytronix.com) using product code:

brandnew-vytronix-jetw1800

## **SAFE DISPOSAL**



This marking indicates that this product should not be disposed with other household wastes throughout the EU. To prevent possible harm to the environment or human health from uncontrolled waste disposal, recycle it responsibly to promote the sustainable reuse of material resources. To arrange safe disposal of your used device, please use the return and collection systems or contact the retailer where the product was purchased.



# vytronix

**Powerfully simple**

If you have any queries or require assistance with using your product including set up, troubleshooting or registration please email our customer care on [support@vytronix.com](mailto:support@vytronix.com)

Register your warranty at [www.vytronix.com](http://www.vytronix.com)



