

NeoLINER[®]LC

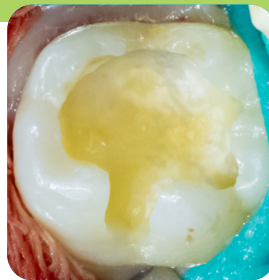
Quick Start Guide



MTA modified liner/indirect
pulp capping material

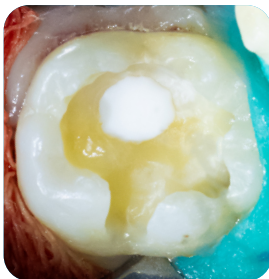


PRE-OP



STEP 1

With good isolation, complete the cavity preparation



STEP 2

NeoLINER LC should be applied to moist dentin with no pooled water, blood, or saliva present in the cavity preparation. Apply NeoLINER LC to the cavity floor in a layer ≤ 1 mm thick.



STEP 3

Light cure for 20 seconds. If restoring with a preformed crown, a bonding agent is not necessary. If an intracoronal composite resin is to be placed; etch, rinse, and bond prior to placement of the restoration.

For direct pulp capping or pulpotomy, NeoLINER LC may be placed over NeoPUTTY[®] to secure and seal margins prior to completing the restoration

MKT-NSNLQS Rev 1