

NuSmile[®]

Signature Quick Start



– 0.65mm

– 0.95mm



Use only for supragingival reduction steps

800 346 5133 | +1 713 861 0033 | nusmile.com | 100% SATISFACTION GUARANTEE

Refer to NuSmile Signature IFU-01 for more detailed information

Quick Start Guide: NuSmile Signature Anterior

Step 1



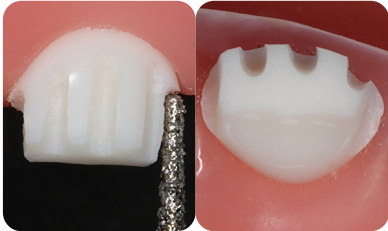
Incisal depth cuts - base of black stripe diamond (approx 1mm)

Step 2



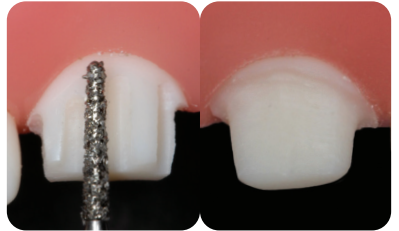
Facial depth cuts - tip of black stripe diamond (approx 0.5mm)

Step 3



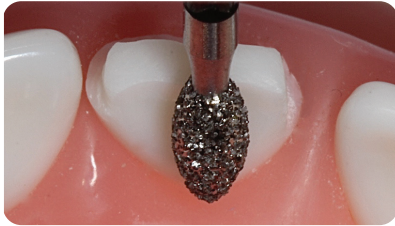
Interproximal slices - 1.5 X diameter tip of black stripe diamond (approx 1mm)

Step 4



Level depth cuts and round facial/lingual interproximal line angles

Step 5



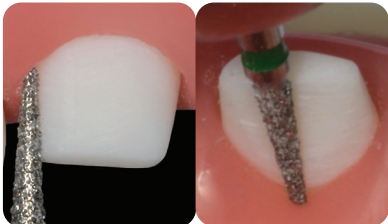
Remove cingulum tapering to incisal
- football diamond

Step 6



Test fit to shoulder created at gingival margin

Step 7



Remove shoulder & extend preparation subgingival to feather-edge
- green stripe diamond

Step 8



Final test fitting

When multiple teeth are being restored, try all crowns together to ensure they fit well and seat passively. If crowns do not fit passively, refine the preparation of the tooth to fit the crown.