

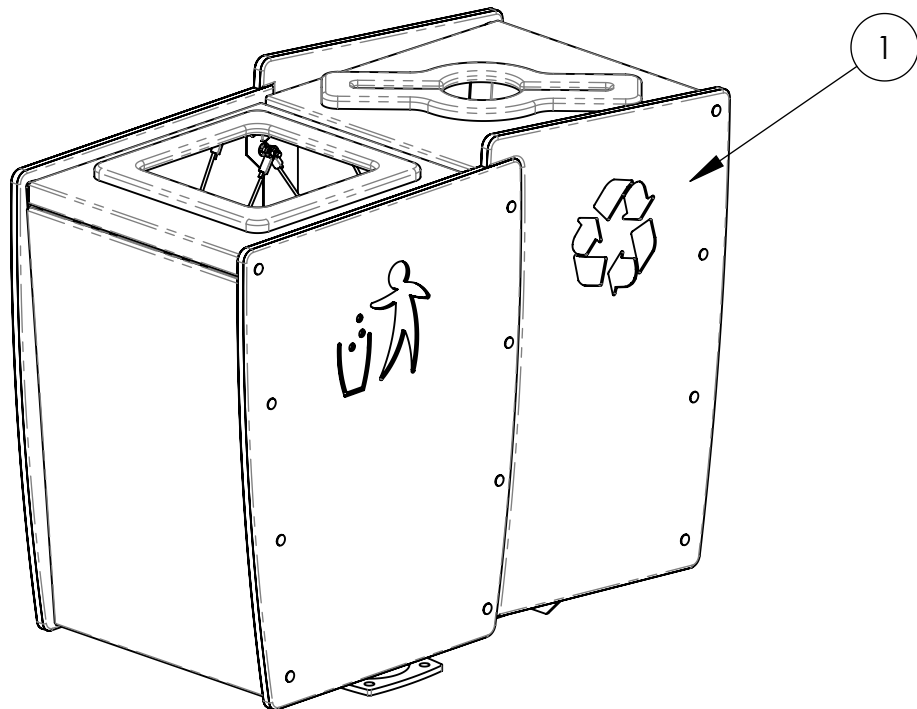
PLAN DE MONTAGE

CMR 2 cont., ouvert, al.

02/04/14

Guyl.

Item	Description	Qté.	Numéro
1	Contenant pour matières résiduelles AL.(Double)	1	*33778

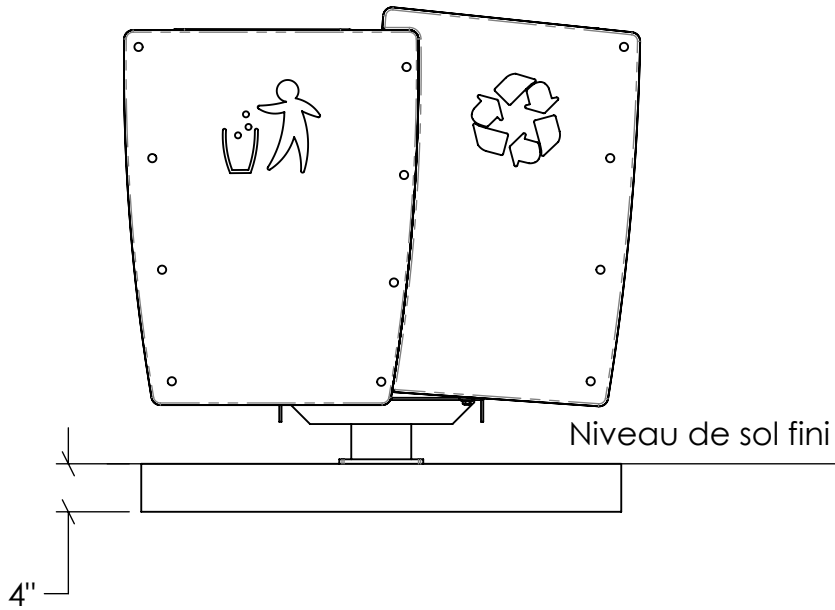
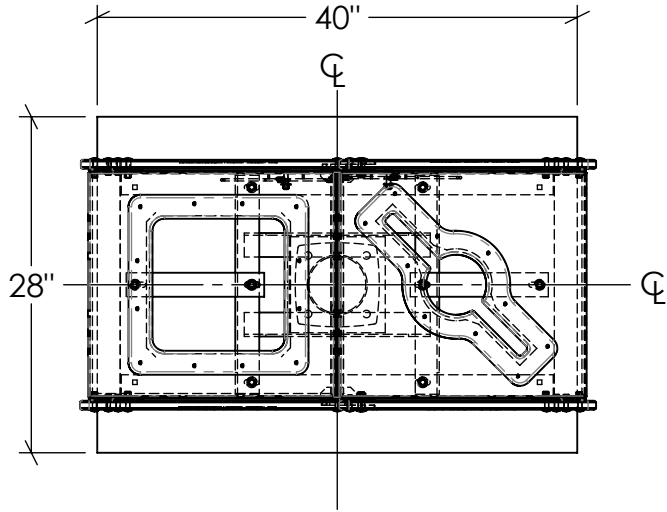


PLAN DE MONTAGE

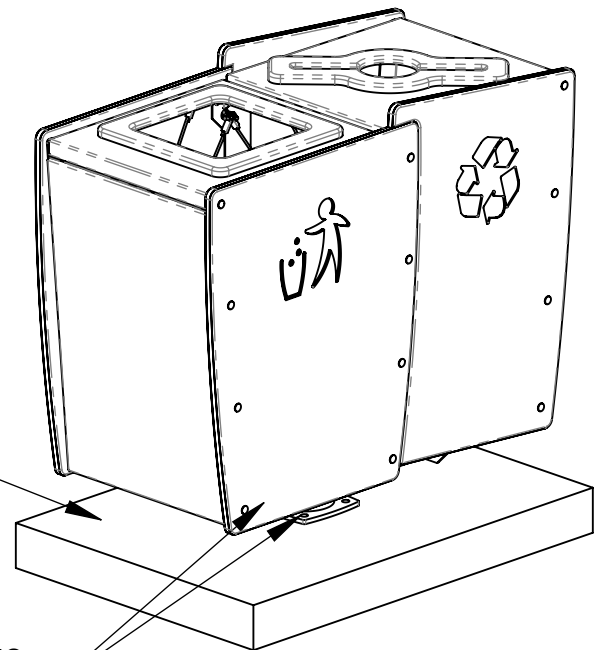
CMR 2 cont., ouvert, al.

02/04/14

Guyl.



BG-2840
40" x 28" x 4"
Base de béton
(**Non include**)



Voir détail de l'ancrage
à la base de béton