

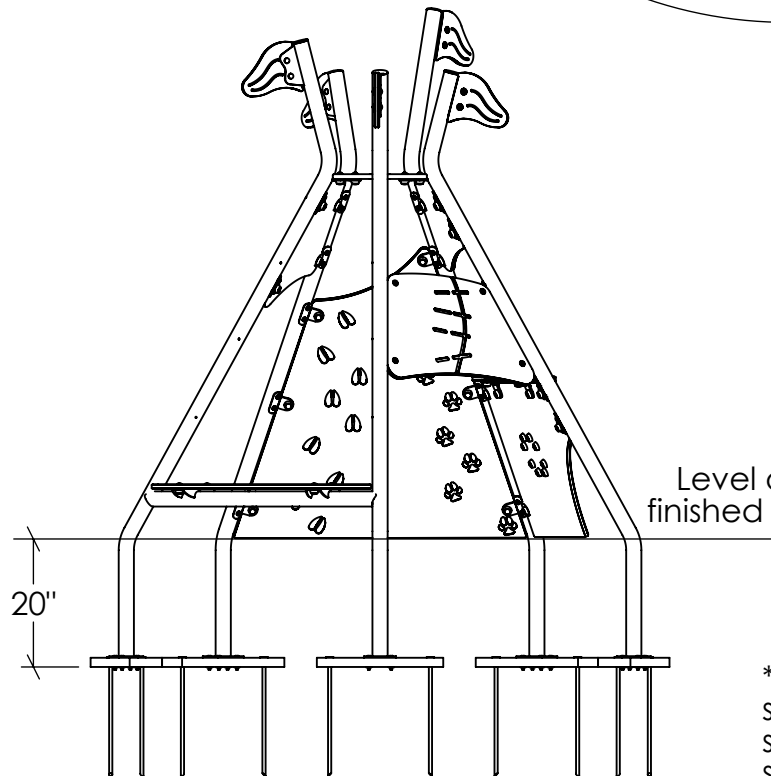
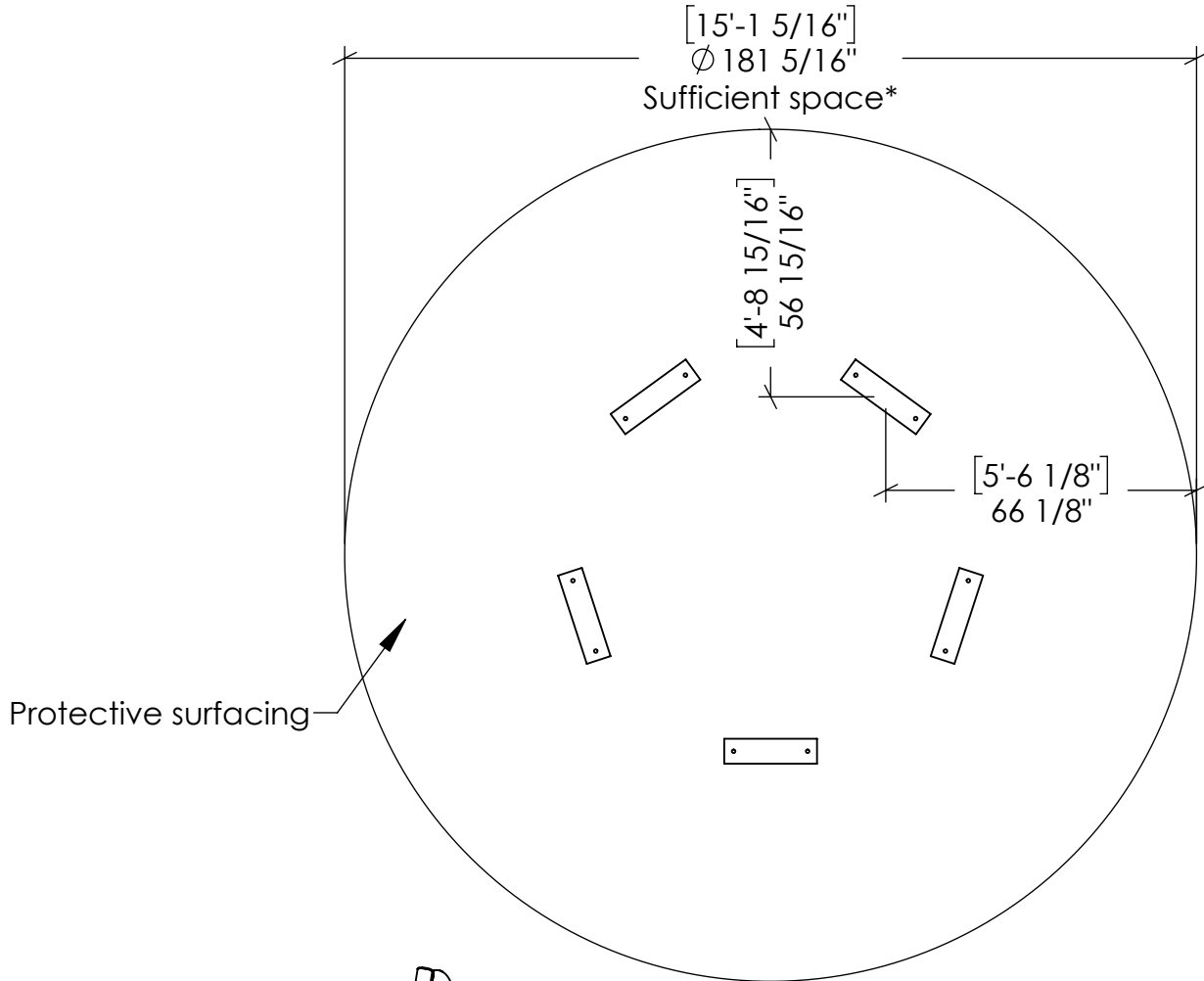
ASSEMBLY PLAN

30/08/2021

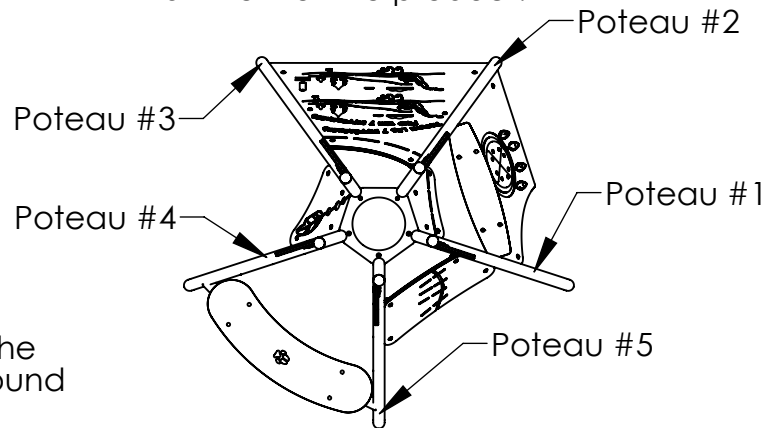
A.D.

Discovery tipi

CSA+ASTM



Plan view of the product:



*Although this product does not require protective surfacing, it is recommended to provide sufficient space. See clause 14.10.1 of CAN/CSA-Z614 standard and clause 9.8.1 of ASTM F1487 standard.

ASSEMBLY PLAN

30/08/2021

A.D.

Discovery tipi

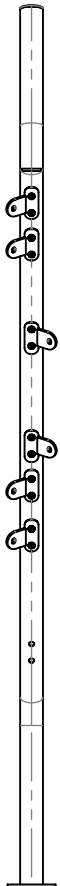
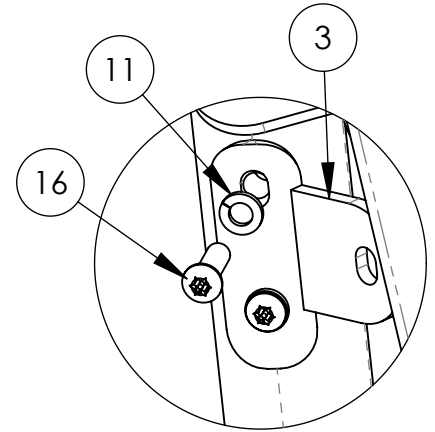
CSA+ASTM

IMPORTANT

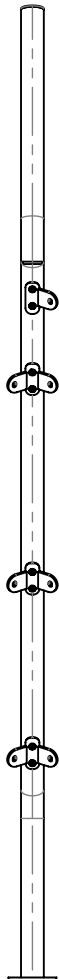
READ CAREFULLY

Before starting to assemble the Tipi

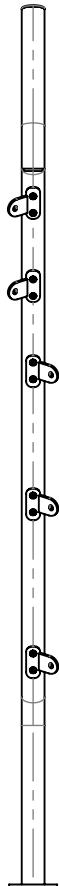
Only slightly thread the nuts and bolts (the minimum amount) - **DO NOT TIGHTEN** - Keeping them loose is the only way to assemble the various subsequent components without difficulty



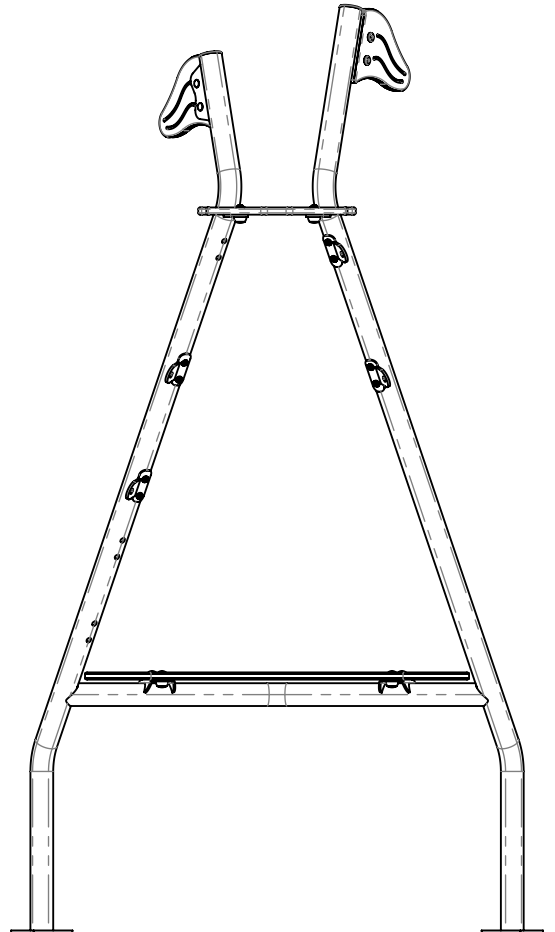
Post #1



Post #2



Post #3



Post #5

Post #4

ASSEMBLY PLAN

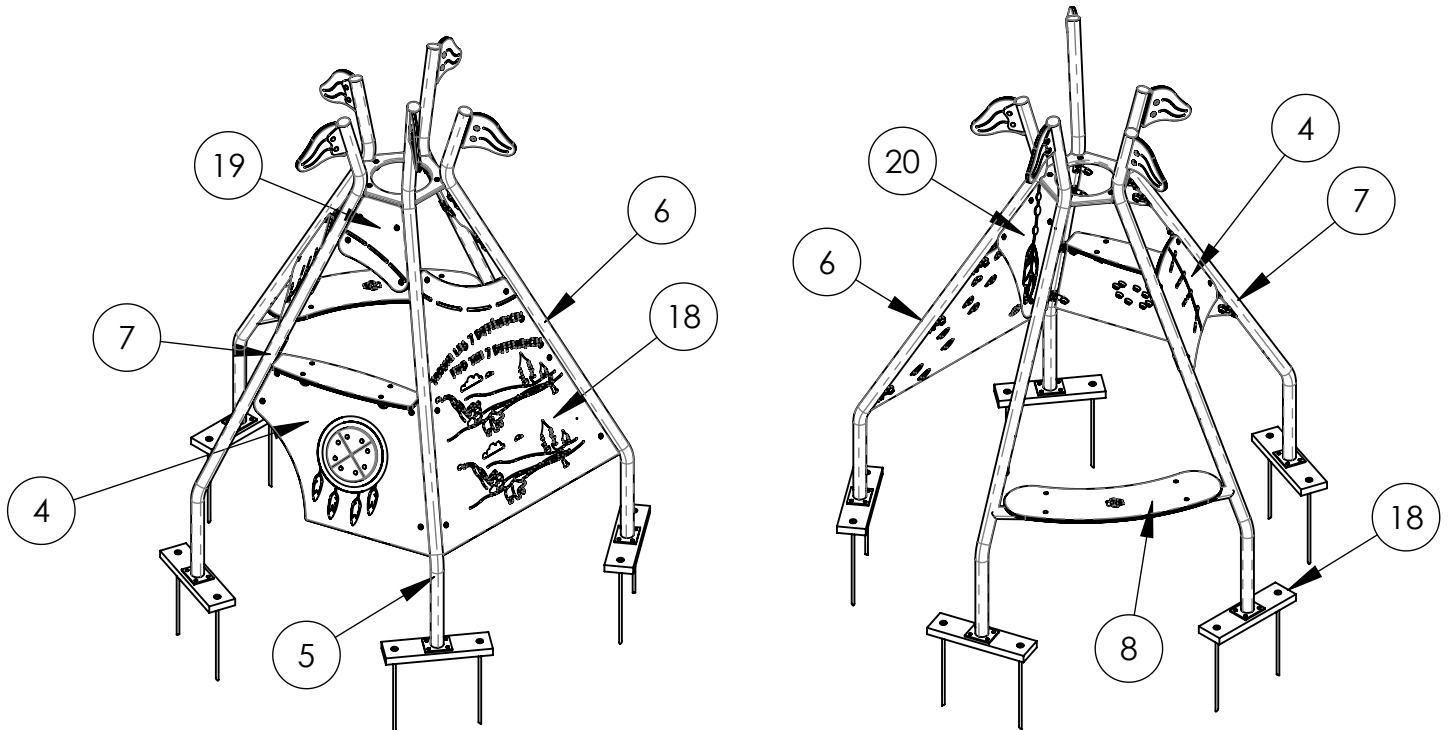
30/08/2021

A.D.

Discovery tipi

CSA+ASTM

Item	Description	Qty.	Number
1	1/2" x 19" Anchor peg (Oiled)	10	α11764
2	Double panel bracket for Tipi gv.	3	*14344
3	Single panel bracket for Tipi gv.	16	*14346
4	Tipi Game Counter	1	*33966
5	#2 Post Tipi Climber	1	*33971
6	#3 Post Tipi Climber	1	*33972
7	#1 Post Discovery Tipi	1	*34123
8	#4-5 Post Discovery Tipi	1	*34124
9	5/16*2 Hex. Bolt	20	41710
10	3/8 Stainless flat washer	25	42470
11	3/8 HDG Spring Lock Washer	38	42565
12	3/8 St/St thin nylon lock nut	25	42811
13	5/16 T-Nut	20	42830
14	Plug	25	45145
15	Capsule	25	45150
16	3/8 -16 x 1-1/4 Button Hd Torx Security Cap Screws Stainless Steel	38	47030
17	3/8 -16 x 1-1/2 Button Hd Torx Security Cap Screws Stainless Steel	25	47031
18	2*6*19-3/4 Recycled plastic (2 holes 3/4Ø)	5	330957
19	3/4 * 15-1/16 * 15-5/8 Dual-colour panel (Wall over counter)	1	335597
20	3/4 * 18-3/8 * 21-3/4 Dual-colour panel (Feather wall)	1	335598
21	3/4 * 45-5/8 * 49-7/8 Dual-colour panel (differences wall)	1	335835
22	3/4 * 27-13/16 * 19-1/16 Dual-colour panel (bird wall)	1	335837

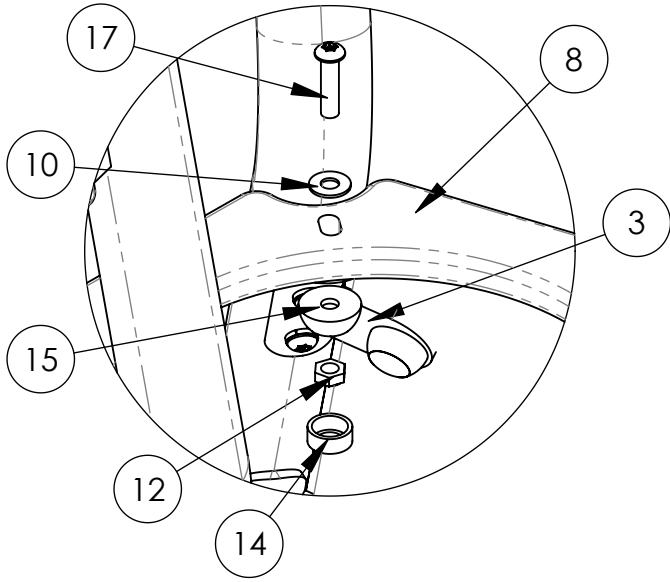


ASSEMBLY PLAN

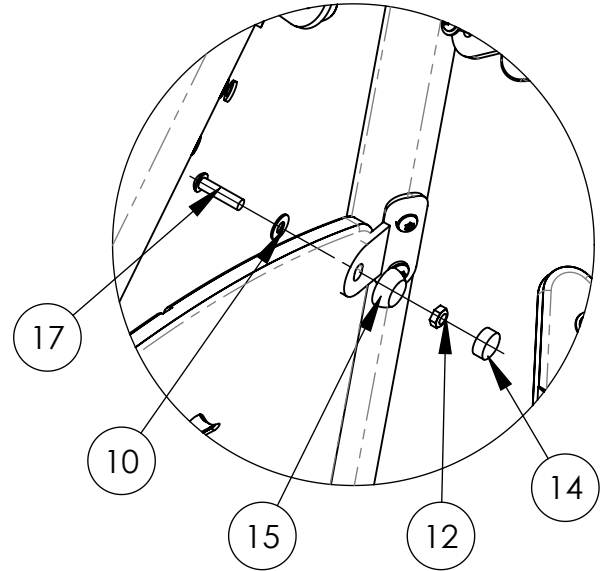
30/08/2021
A.D.

Discovery tipi
CSA+ASTM

A



B



C

