

# DOMA

## COMMERCIAL AND RESIDENTIAL INSTALLATION INSTRUCTIONS

For further technical questions contact your local retailer

### **Caution: Wood Dust**

The sawing, sanding, and/or machining of wood products can produce wood dust that can cause respiratory, eye, and skin irritations. Equipment should be equipped with a dust collector to reduce airborne wood dust. Wear an appropriate NIOSH designated dust mask to reduce exposure to airborne wood dust. Avoid contact with eyes and skin. In case of irritation, flush eyes or skin with water for at least 15 minutes. In cases of severe irritation, seek immediate

### **Approved Installation Methods**

Click Floating (not secured to the subfloor) Engineered Flooring only

### **Scheduling installation**

Wood must not be installed until all other work, e.g., Painting, wallpapering and tiling, is completed. The site must have the correct temperature and relative humidity levels. This avoids dents, scratches, and moisture related damage to the floor.

### **Storage and Acclimation requirement**

DO NOT STORE IN unclimatized buildings, garages, sheds, directly on bare concrete or next to outside walls. Cartons should be placed close to the center of the installation area as possible. Keep out of direct sunlight and away from heat/air vents.

Do not store cartons outside in truck trailers. Extreme heat (110 and above) will distort the wood.

**ENGINEERED FLOORING** - ACCLIMATE A MINIMUM OF FIVE (5) days prior to installing at 60-80° Fahrenheit and relative humidity of 35-55%. DO NOT OPEN THE CARTONS. Each pallet and carton will arrive to the job site packaged to maintain its most desirable installation moisture content. If material needs to be inspected prior to installation, carefully remove from carton. After inspecting, place back in the carton and secure with tape until installation. DO NOT REMOVE PACKAGING UNTIL THE DAY OF INSTALLATION. Wood that has not been used within a day should be returned to the carton and sealed until ready for installation. Removing the wood from the carton prior to installation could lead to distortion (bowing, crowning, twisting, cupping).

### **Inspection of Wood**

It is always easier to rectify faults if they are discovered early. Always make a habit of inspecting the product at the time of installation. Faulty products can, of course, be exchanged. From 36" standing distance, wood with obvious faults (Color, Gloss, Texture) should be detectable before installation and must not be used. Always make sure that inspection and installation are carried out in good light. We recommend to layout 100 square feet (4 cartons) prior to installation for visual inspection.

We will only be responsible for the first 100 square feet installed.



## COMMERCIAL AND RESIDENTIAL INSTALLATION INSTRUCTIONS PRE-INSTALLATION CHECK LIST

- 1. **TWO PEOPLE ARE REQUIRED** TO ASSEMBLE THE PLANKS TOGETHER
- 2. **INSPECT ALL MATERIALS CAREFULLY BEFORE INSTALLATION**, at 36" height from floor contact us for questions.
- 3. **ACCLIMATE A MINIMUM OF FIVE (5) days** prior to installing at 60-80° and relative humidity of 35-55%. DO NOT OPEN THE CARTONS.
- 4. **CALCULATE THE TOTAL SURFACE AREA** of the room(s) and add 10% for cutting and waste.
- 5. **HEATING AND COOLING SYSTEMS** must be fully operational at least 14 days prior to flooring installation, maintaining a minimum room temperature between 60-80° Fahrenheit and relative humidity of 35-55% (to perform optimally without gapping, cupping, warping).
- 6. **APPROVED INSTALLATION LEVELS. HIGH RISE BUILDINGS** installation requires maintaining a minimum room temperature between 60-80° and relative humidity of 35-55% (to perform optimally without gapping, cupping, warping). NOTE: The higher the elevation, the drier the indoor climate.
- 7. **MOST WOOD FAILURES RESULT FROM JOBSITE MOISTURE.** Do not unpack wood until moisture problems are corrected. Sources of moisture should be identified and corrected before installation
  - For concrete subfloors and walls, Tramex Moisture Meter (maximum reading of 4.5)
  - For wood subfloors and walls, there should be no more than 12% moisture content.
- 8. **PRE-ATTACHED PAD** included sound mitigation. Do not use any additional sound suppression padding, as doing so will void the Limited Warranty.
- 8. **DO NOT INSTALL IN** - outside areas, sunrooms/solariums, saunas, seasonal porches, camping, trailers, boats, RVs, 3- season rooms, lanais, rooms that are prone to flooding, or rooms or homes that are not temperature-controlled. **TOILETS** can be installed under toilets; leave proper expansion space around flange and use a premium waterproof 100% silicone caulk. Do not anchor toilet through the material.
- 9. **SUB-FLOOR MUST BE LEVEL** to 3/16" in 10' or 1/8" in 6" radius. or floor could flex. Sand and fill variations.
- 10. **DO NOT INSTALL OVER** carpeting, radiant heat, existing floating floors or by electric baseboard heaters.
- 11. **EXPANSION SPACE IS REQUIRED FOR FLOORING-** 1/4" around perimeter walls and vertical surfaces. Do not install flooring under permanent or fixed cabinetry. Note: Floating installations, floor must have 1/16" clearance under the door casing to be able to float freely without vertical restriction. Cut Edges, fill expansion spaces around potential wet areas only with premium waterproof 100% silicone caulk.
- 12. **COLOR VARIATION** – Wood is a natural material and variations in color, knots, and mineral lines are to be expected. Mix wood from 4 cartons at a time to ensure a good blend of the natural variation.
- 13. **ALWAYS STAGGER THE END JOINTS** of adjacent rows a min. of 8", for strength and visual appealing design.
- 14. **AFTER THE FLOOR IS COMPLETELY INSTALLED** Never cover a newly installed floor with plastic. Use a breathable material such as Kraft paper. Non-breathing coverings can cause the floor to become damaged from humidity buildups.
- 15. **BOWED FLOORS BOARDS** We aim to manufacture boards that are flat lengthwise to make the floor easy to lay. However, a board that bows can be installed without it affecting the finished floor. Do not forget to stagger the end joints in accordance with the installation instructions. Contact Us.
- 16. **MAXIMUM FLOOR SIZE** Note: Larger rooms require additional expansion space. Add 1/16" to the width of the expansion space for every 3' the room extends beyond 25'. Dimensions exceeding 40'in length or width – it is recommended to use a T-Molding for proper expansion.

# DOMA

## COMMERCIAL AND RESIDENTIAL INSTALLATION INSTRUCTIONS FLOATING ENGINEERED FLOOR

### REQUIREMENTS

**PRE-INSTALLATION CHECK LIST MUST BE FOLLOWED**

**A FLOATING FLOOR EXPANDS AND CONTRACTS WITH SEASONAL CHANGES.** Do not put fasteners (nails, screws, etc.) through the floor or “pinch” the floor under doorways, etc. This could cause the floor to pull apart or buckle because it is not allowed to “float” freely.

### REQUIRED TOOLS AND MATERIALS

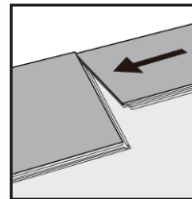
1. Pull bar - used at ends of installation in tight areas.
2. Tapping block - used to engage boards by tapping tongue
3. Wood or plastic spacers (1/4") - to maintain perimeter expansion space.
4. Rubber Mallet



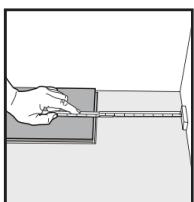
### INSTALLATION PROCEDURE



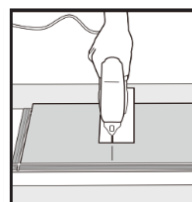
1: First board, first row Leave an expansion gap of 1/4" width to the left and position the plank against the starter wall. (Helpful Hint: Skip to review step 10 notes below regarding the last row, then come back to continue.)



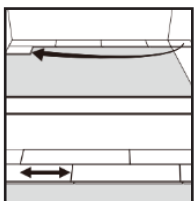
2. Second board, first row. Place this board tight to the short end of the first board.



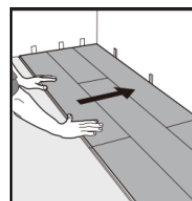
4: At the end of the first row, measure the length of the last board to fit. Be sure leave the expansion space of 1/4" at the end of the row.



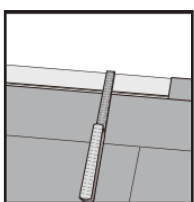
3: Once you have determined your measurement, make your cut.



4. Second row. The first board (in any row) should be at least 8" in length. Again, be sure to leave an expansion gap of 1/4" against the wall as you start the second row.



5. After 3 rows are installed, slightly pull the entire 3 rows away from the long wall to for your 1/4" expansion. Then continue installing each additional row as instructed above.



6. For the last row, you will need to cut the board lengthways to fit against the far wall. Do not forget to leave the 1/4" expansion, and it is not recommended for the last board to be less than 1 1/4" in width (which may mean adjustments to the first row).