

How to set VFD

(VFD 세팅방법)

2022. 3. 8.



CPD Utility Installation(CPD Utility 설치)

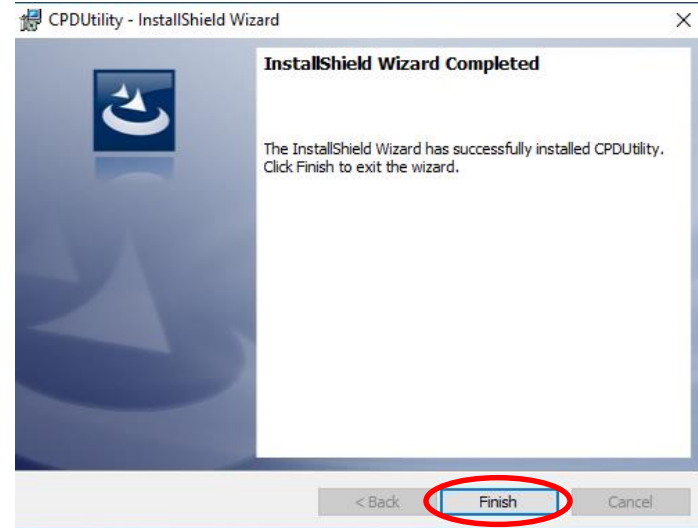
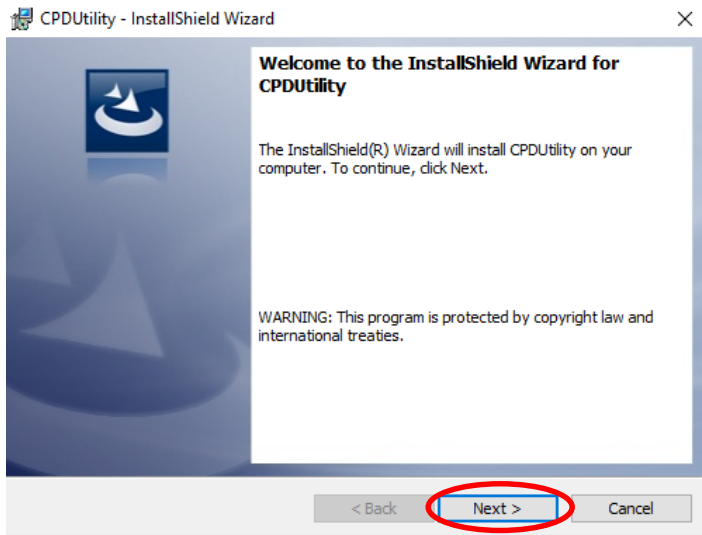
> CPD-3250 >

Name	Date modified	Type
Application	2022-03-08 오후 5:46	File folder
Driver	2022-03-08 오후 5:46	File folder
UM	2022-03-08 오후 5:46	File folder

Install(설치),
CPD-3250/Application/CPD Utility/Setup.exe

> CPD-3250 > Application > CPD Utility

Name	Date modified	Type
Setup.exe	2018-01-31 오후 3:49	Application

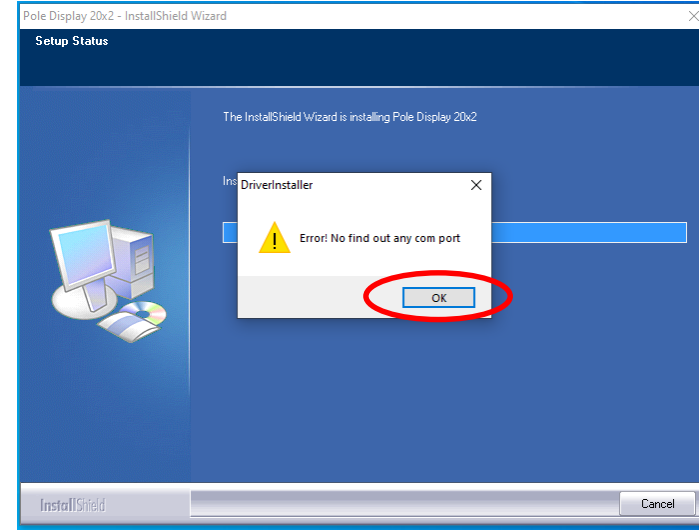
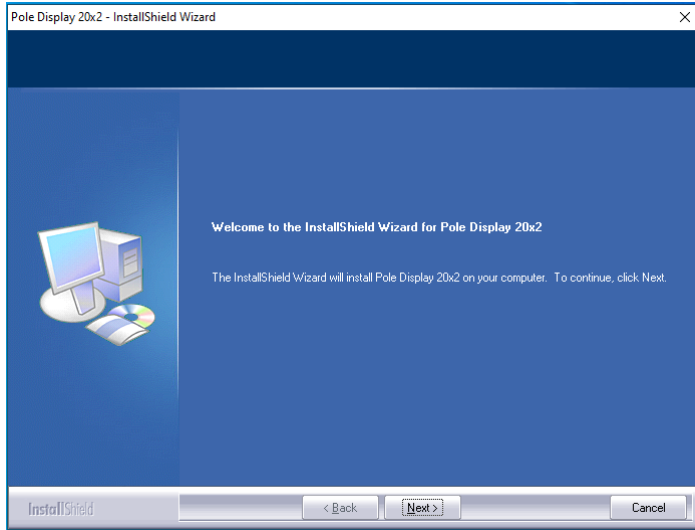


Install Driver - 1(Driver 설치 - 1)_Pole Display 20x2

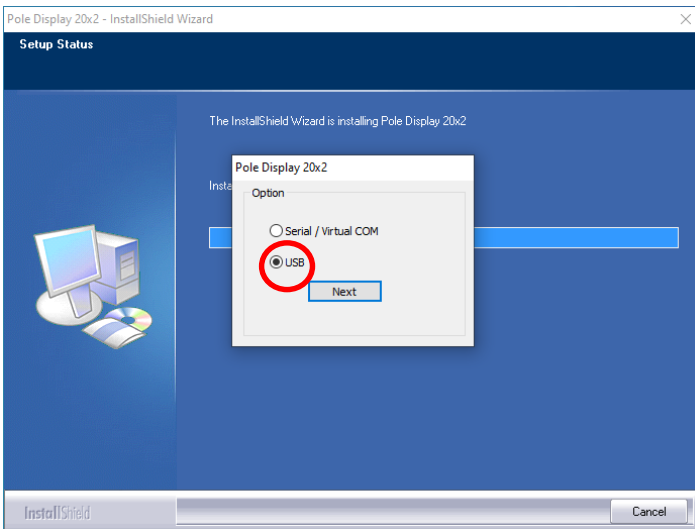
> CPD-3250 > Driver > 20x2 > CDC > xp_win8

Name	Date modified	Type
setup.exe	2017-09-05 오후 3:03	Application

Install(설치),
CPD-3250/Driver/20x2/CDC/xp-win8/setup.exe



Ignore "Error"(에러 무시)



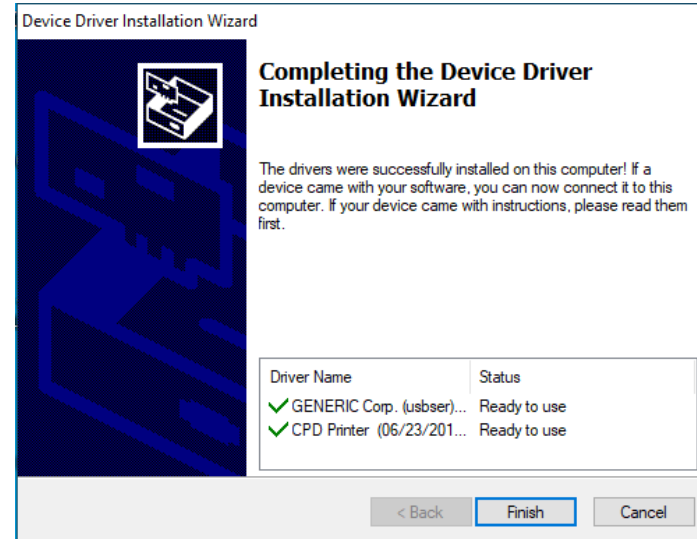
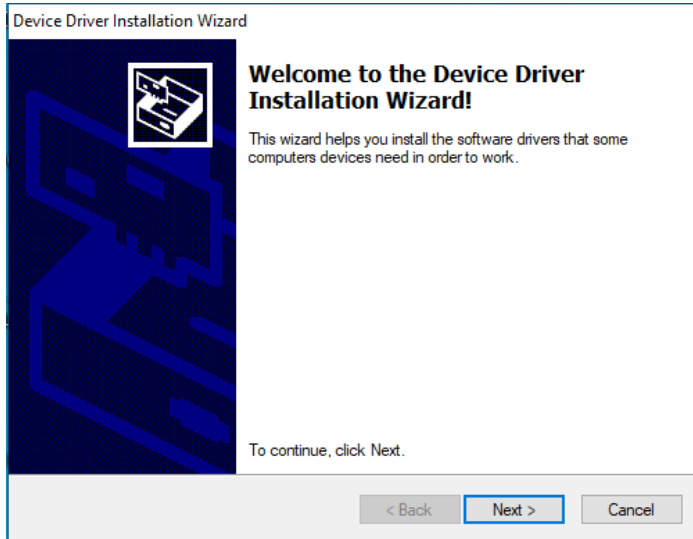
Set "USB"(USB 로 설정),

Install Driver - 2(Driver 설치 - 2)_Printer

> CPD-3250 > Driver > 20x2 > Printer

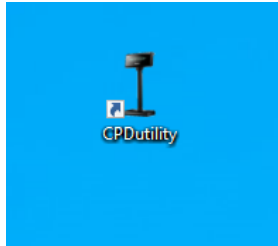
Name	Date modified	Type
setup.exe	2017-06-23 오후 6:06	Application

Install(설치),
CPD-3250/Driver/20x2/20x2/Printer/setup.exe

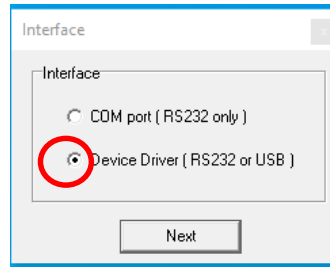


Please Restart a windows after installation
설치 후에 윈도우를 재부팅해주세요.

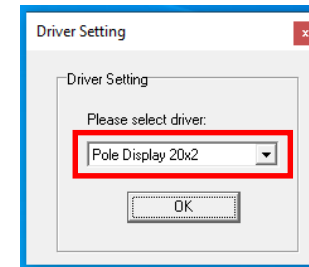
CPDutility



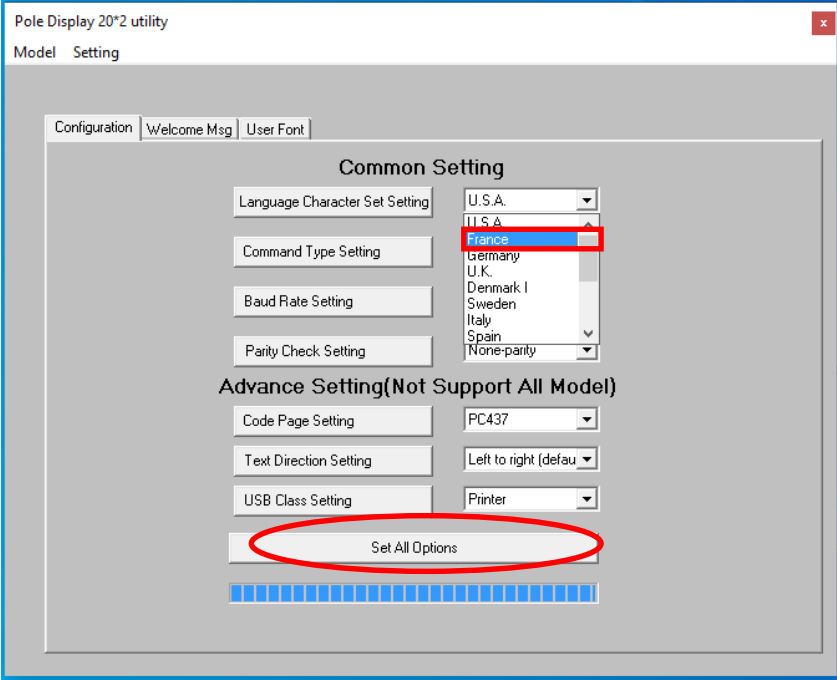
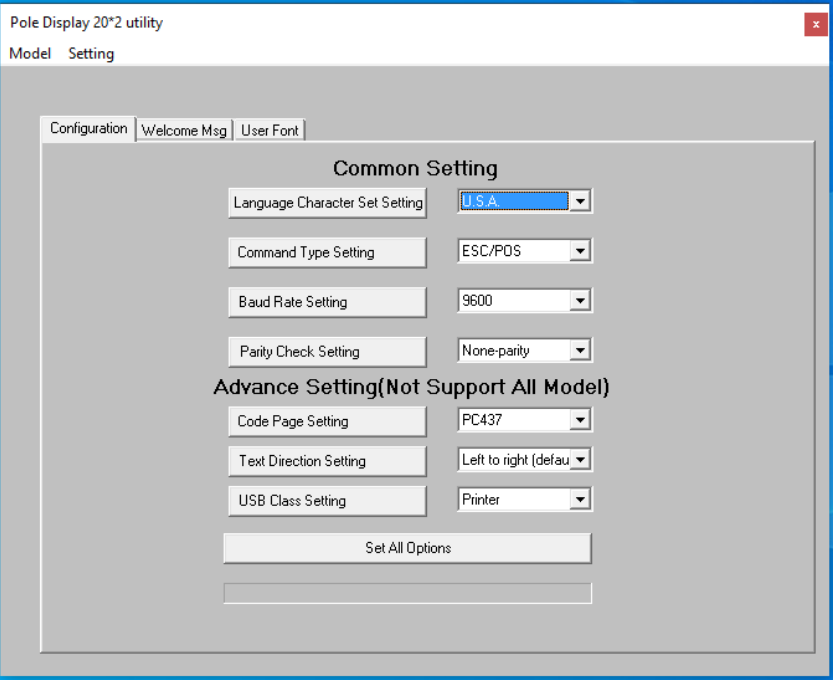
Run "CPDutility"

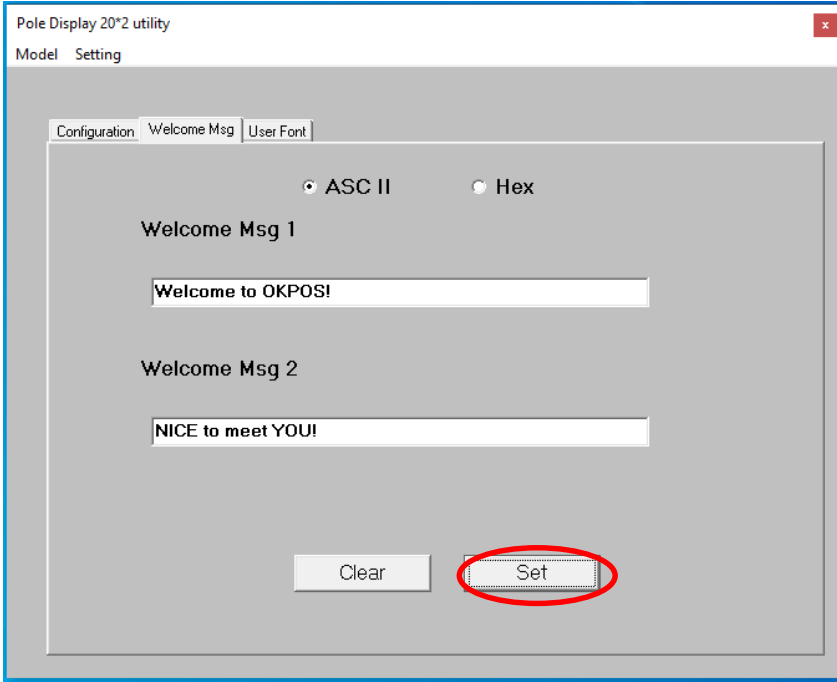
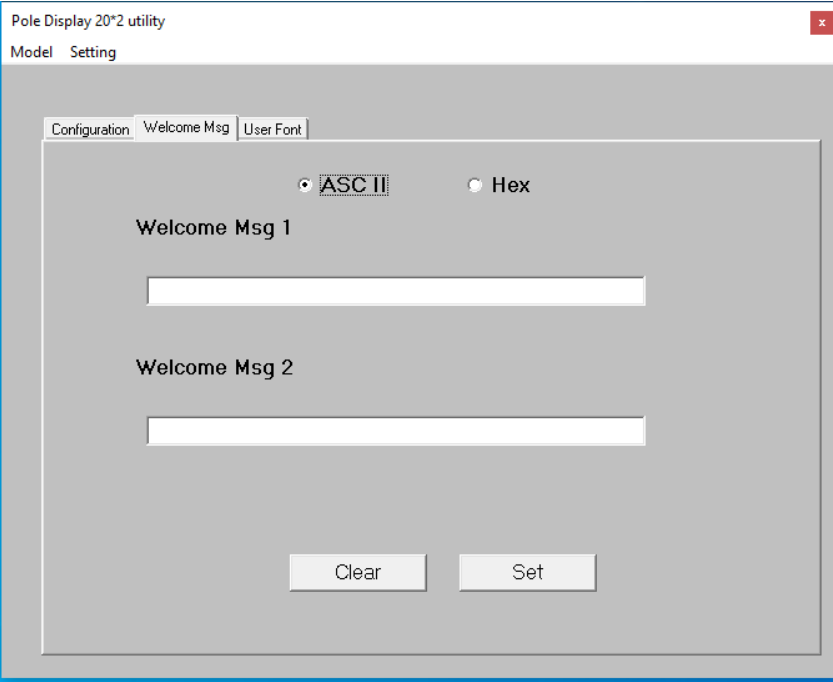


Interface, Select
"Device Driver(RS232 or USB)"



Driver Setting, Select
"Pole Display 20x2"





Type messages, and click "Set"



Original Welcome message



Turn off power and turn on after welcome message changed



Welcome message changed