

# MRM Setter Setup Manual

## 1. Run Setup files.



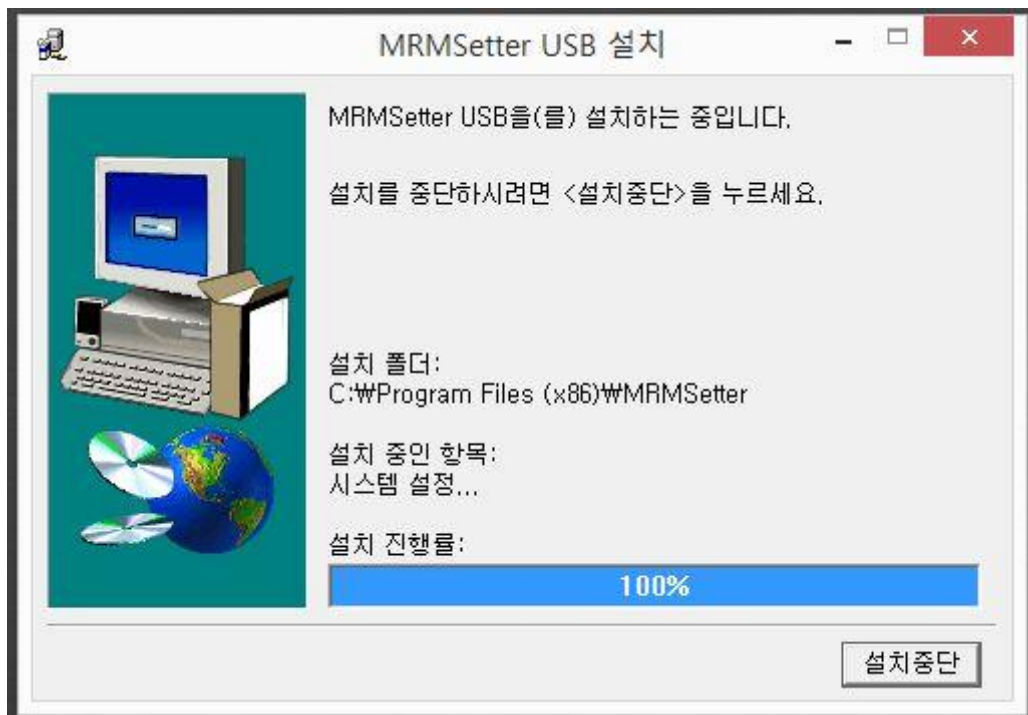
## 2. Click Next during installation.



## 3. Select setup folder location and click set up starts.



#### 4. Proceed installation



#### 5. Click confirmation when program installation is completed.

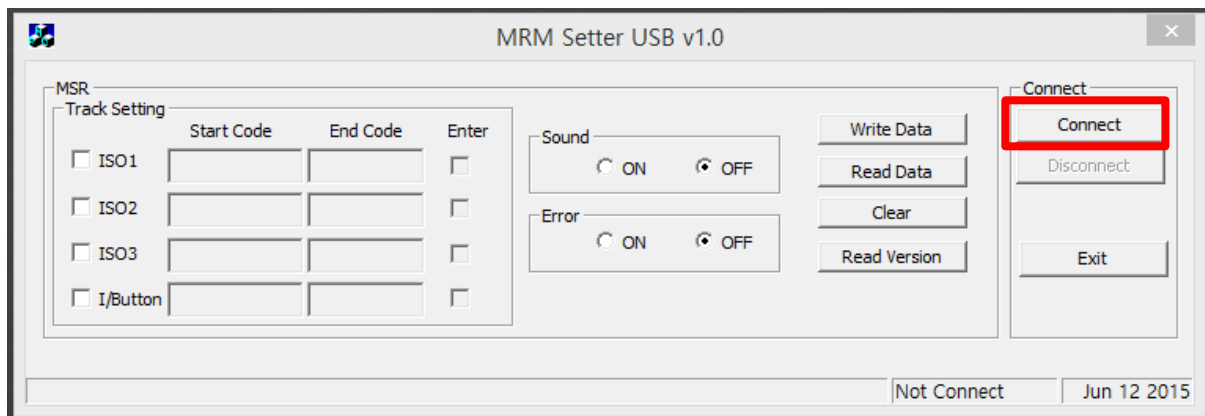


# MRM Setter Use Manual

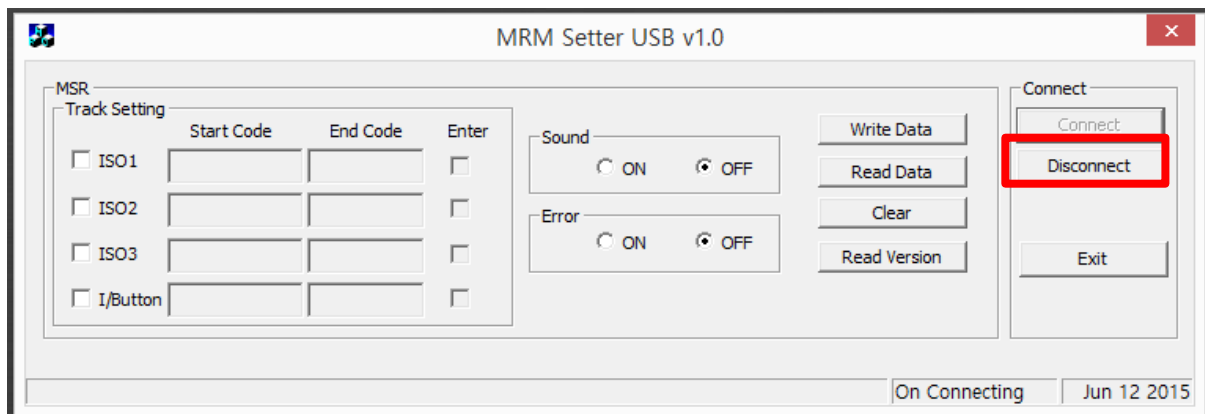
## 1. Run MRMSetter.exe



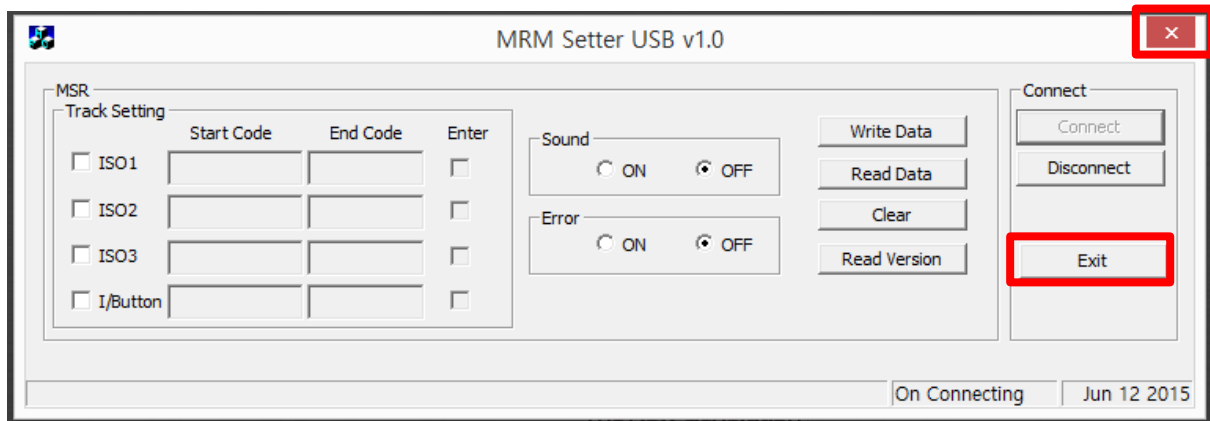
## 2. Connect MSR Module and Click the Connect button.



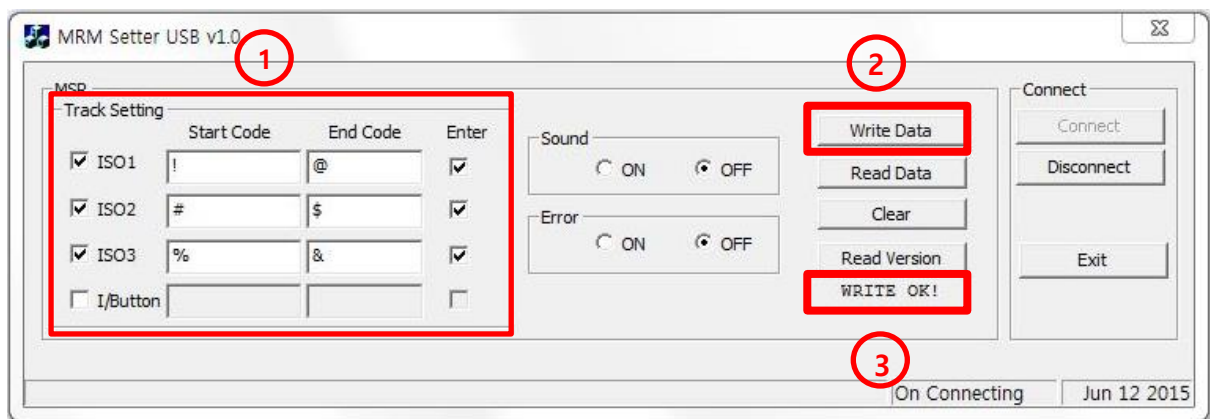
## 3. If you disconnect MSR module, Click the Disconnect button.



4. If you want exit program, Click Exit or X.

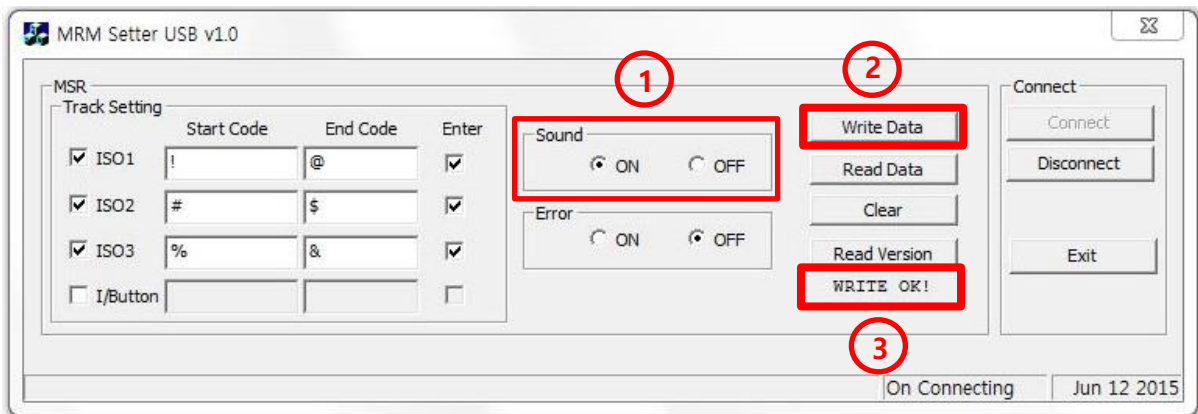


5. Setting MSR Track MSR



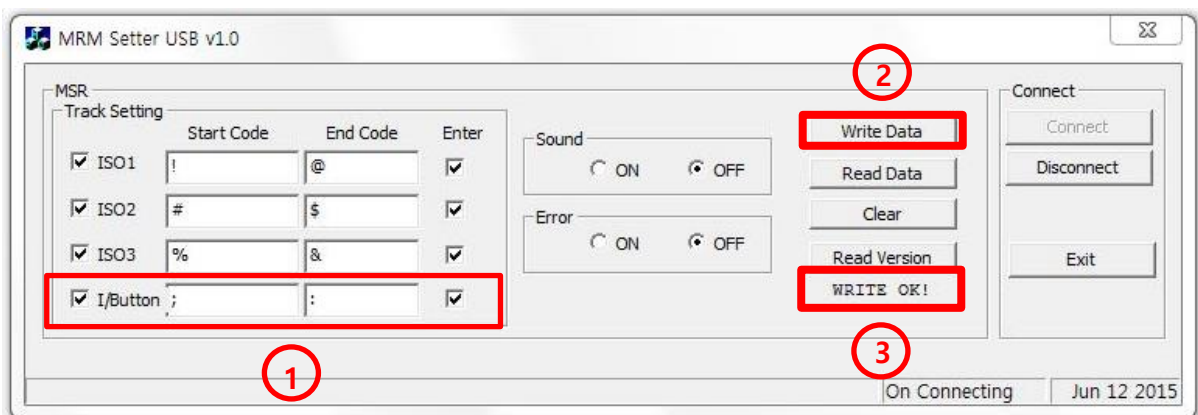
- ① Setting the track, start and end code. Also user can set line alignment.
- ② After above setting, click Write Date button.
- ③ Check whether WRITE OK! Is on your program.

## 6. Setting Sound (buzzing)



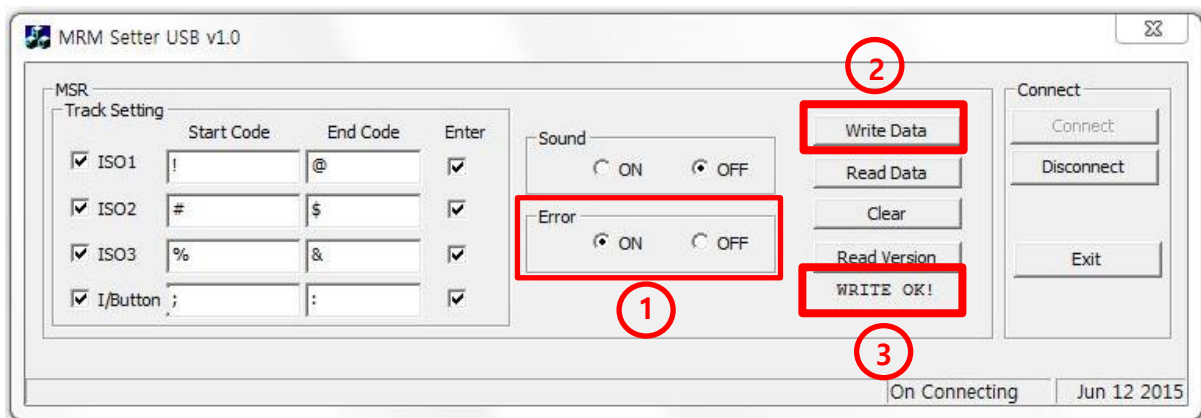
- ① If reading of magnetic card failed, Check on buttons in sounds circle no1.
- ② Click Write Data button.
- ③ Check whether WRITE OK! Is on your program.

## 7. Setting I-Button



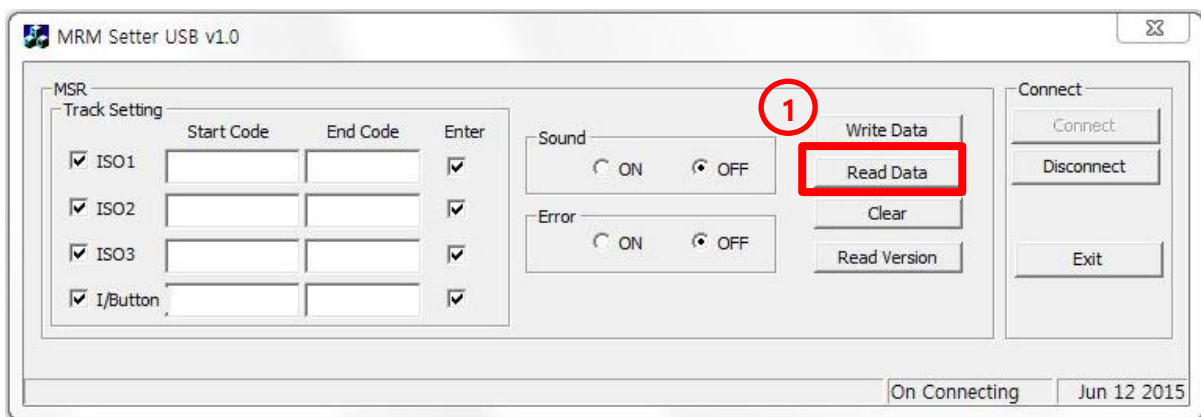
- ① Check no1 box in above photo for setting I/button function.
- ② Click Write Data button.
- ③ Click whether WRITE OK! Is on your program.

## 8. Setting Error Code



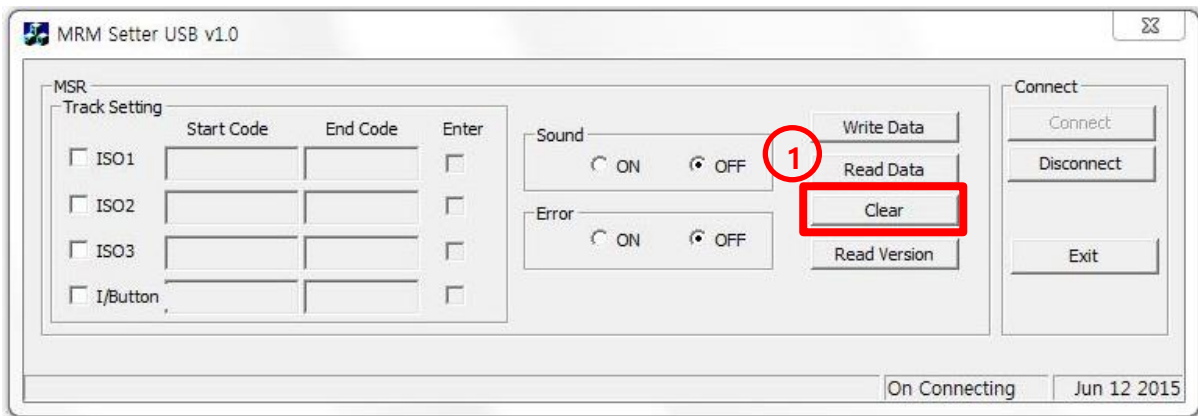
- ① Check on button for Error code in No1 box above photo
- ② Click Write Data button.
- ③ Check whether WRITE OK! Is on our program.

## 9. Read Completed Function Data



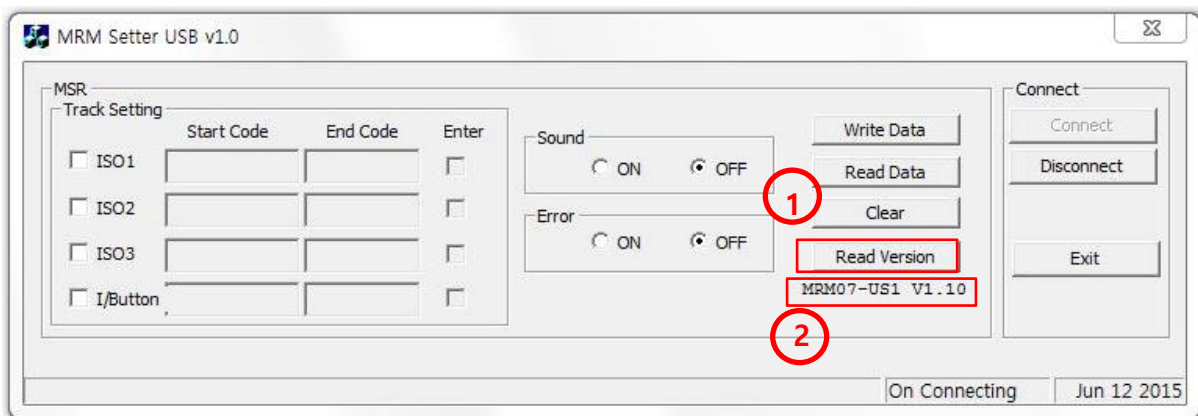
- ① Click Read Data for completed setting data.

## 10. Resetting for Initial Setting



① if user want to go back initial setting, Click the Clear button.

## 11. Reading Program Version



① Click Read Version for reading program version.

② Message which is MRM07-US1 V1.10 on your program.