



INSTALLATION “HK DRAWER” program

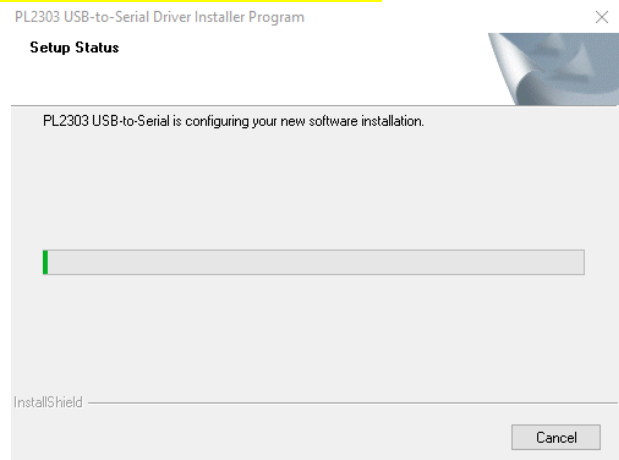
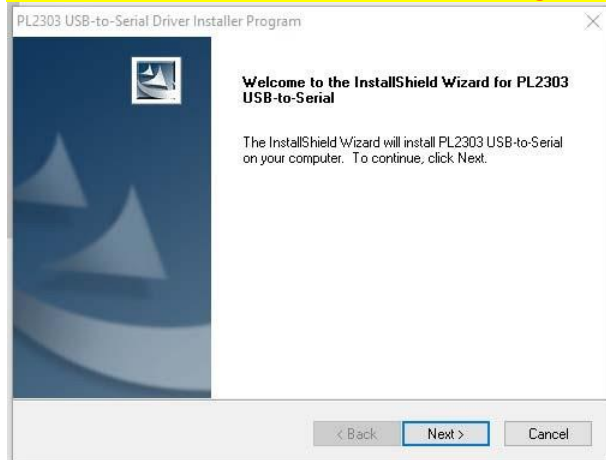
04.2022

1. Please install the driver. Which means, please run/double click

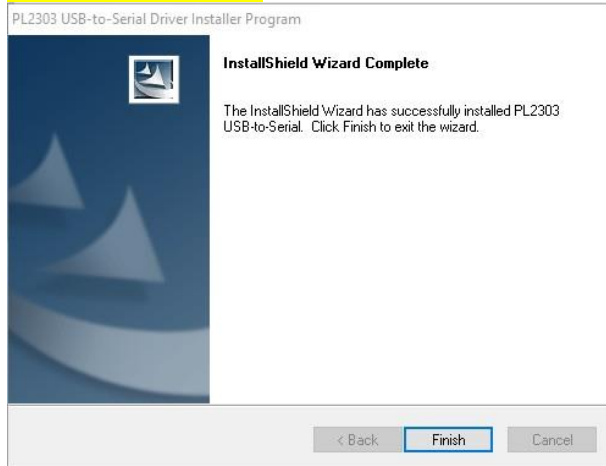
PL2303_DriverInstaller_1181_20170504.exe. **“DO NOT PLUG OUR DRAWERYET”.**

Name	Date modified	Type	Size
 Drawer Test.exe	4/26/2022 5:17 PM	Application	42 KB
 PL23XX-M_LogoDriver_Setup_v400_20211229.exe	12/28/2021 10:50 PM	Application	9,698 KB

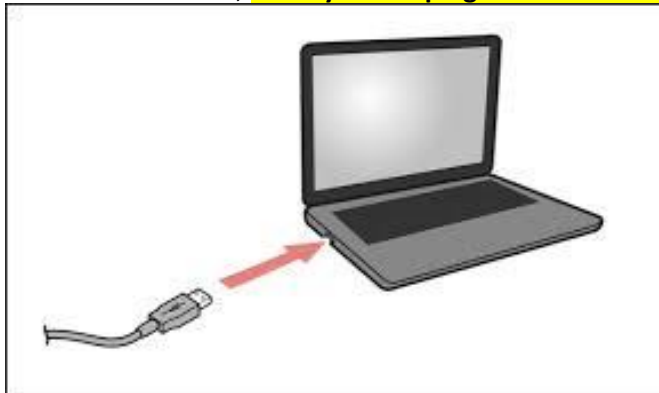
<<< IT WILL TAKE “1 MIN” with the following screen. DO NOT WORRY. PLEASE WAIT.>>>





<<< AFTER 1 MIN >>>



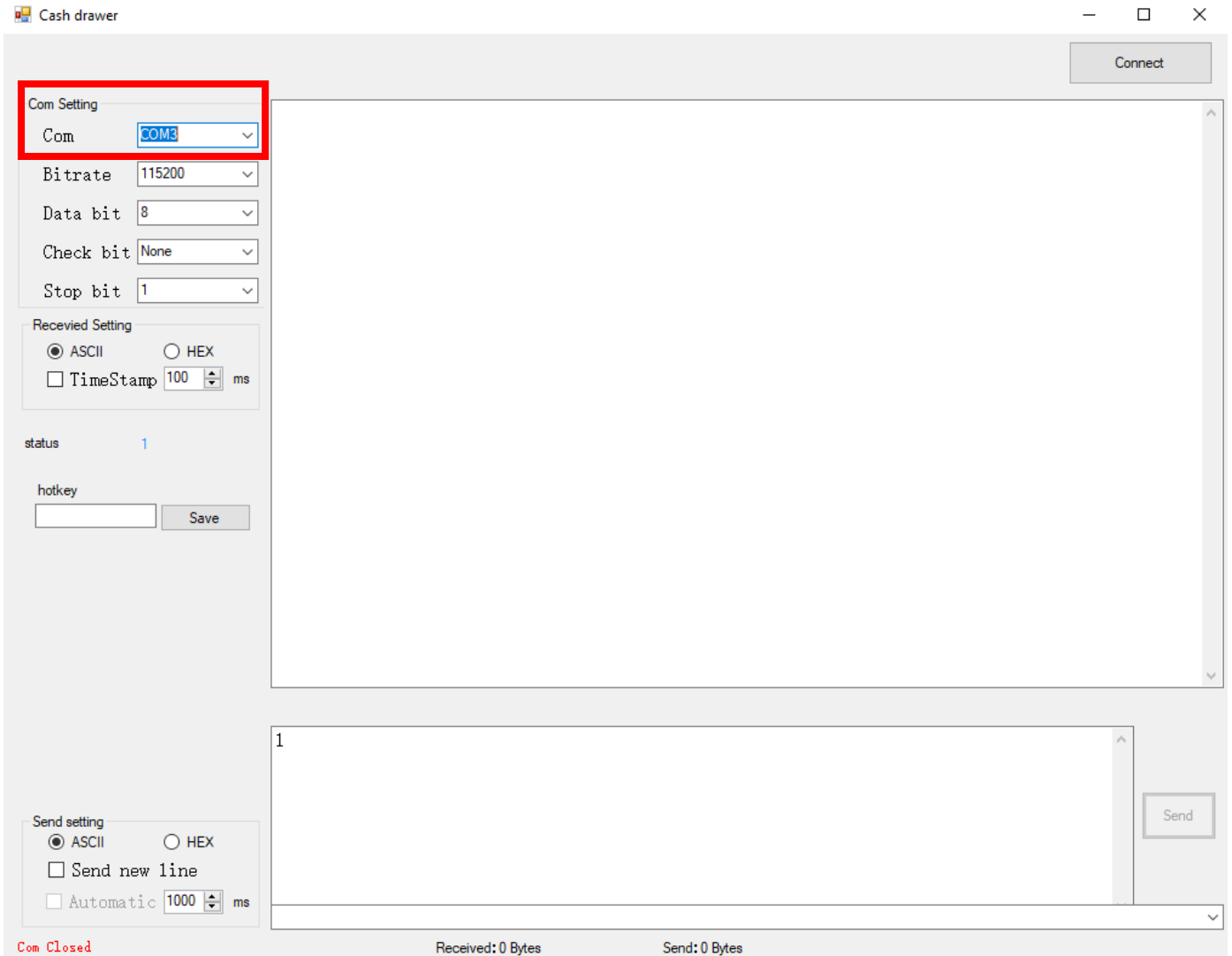
2. After finish STEP #1, **NOW you can plug our USB drawer to you PC.**



3. Now, please run DrawTest.exe.

Name	Date modified	Type	Size
 Drawer Test.exe	4/26/2022 5:17 PM	Application	42 KB
 PL23XX-M_LogoDriver_Setup_v400_20211229.exe	12/28/2021 10:50 PM	Application	9,698 KB

4. If you can see a “COM PORT” (ex. COM3) number on our program, everything is done well.



Cash drawer

Connect

Com Setting

Com **COM3**

Bitrate 115200

Data bit 8

Check bit None

Stop bit 1

Received Setting

ASCII HEX

TimeStamp 100 ms

status 1

hotkey

Save

Send

Send setting

ASCII HEX

Send new line

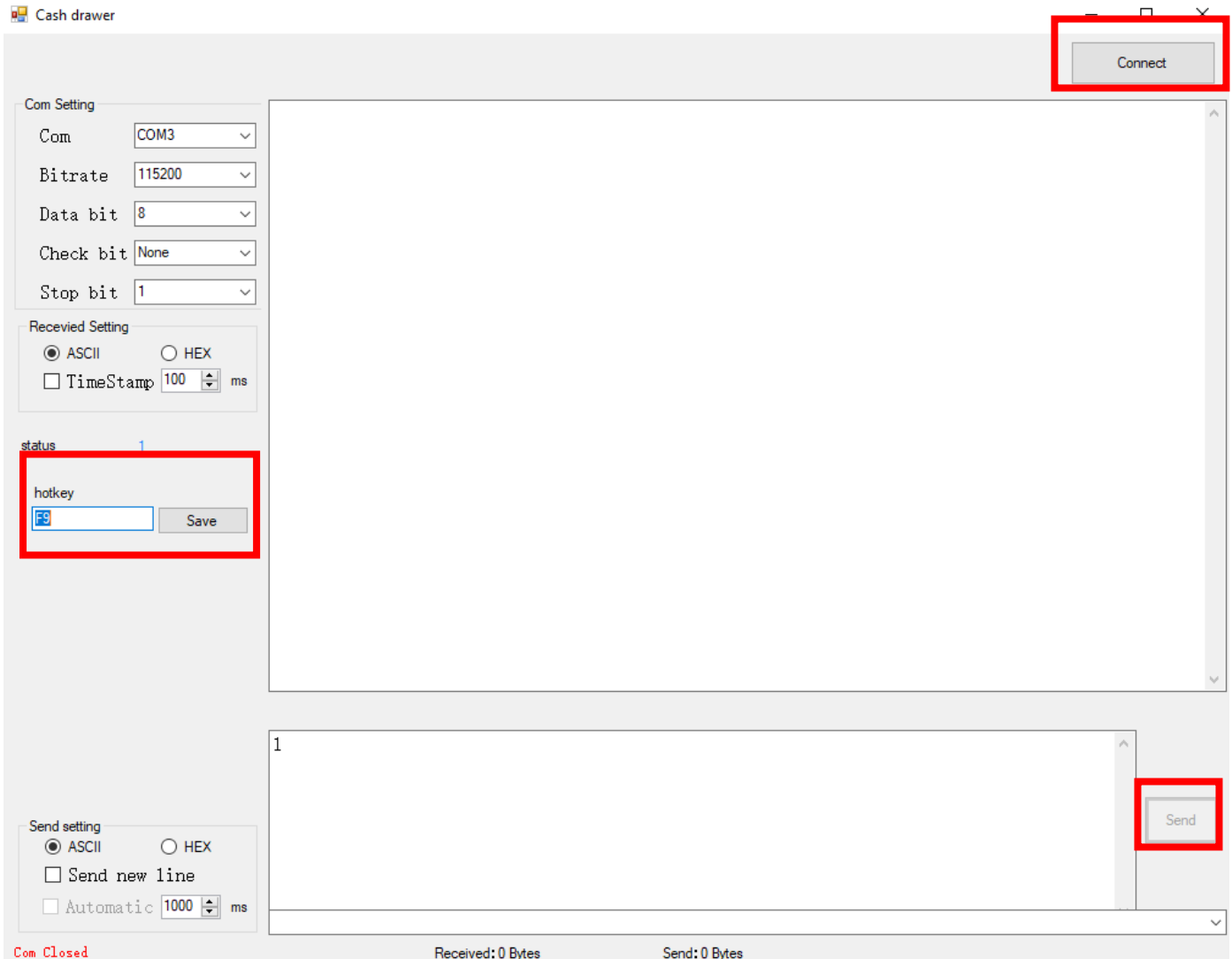
Automatic 1000 ms

Com Closed

Received: 0 Bytes

Send: 0 Bytes

5. Now, you can have fun. Please click “Connect” OR please set up hotkey (ex. F9) - **Press the function key “F9”** and click “Save”. (After saving the hotkey, please click “Connect”) Now you can open our drawer using “F9” key or pressing “Send” button on our program.



Set up Hot key (ex. F9): **Press the function key “F9”** and click “Save”. Now you can run our program just press “F9” key.

** If you have any questions, please contact our Tech support team at 1.201.679.7793 **