

SAM4S



The new ELLIX

ELLIX30/40 Series

Faster and Easier

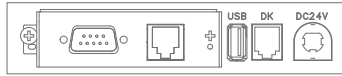
- Faster Printing Speeds
- Conveniently Provides NFC Tag
- Paper Jam-Free Auto Cutter
- Comprehensive Barcode Formats
- Low Power Consumption and Paper Saving
- Supports Various Options and Interfaces



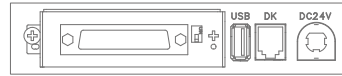
INTERFACE VIEW



▲ USB Only



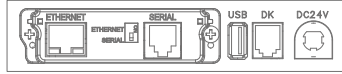
▲ USB + RS-232(9Pin + RJ45)



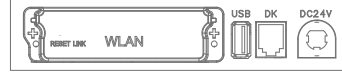
▲ USB + RS-232(25Pin)



▲ USB + Parallel



▲ USB + RS-232(RJ45) + Ethernet (3-Combo)



▲ USB + Wi-Fi(WLAN)



▲ USB + BLUETOOTH

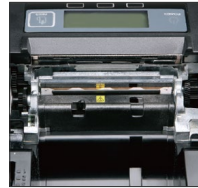
KEY FEATURE



Easy paper loading & Jam Free/Apply auto cutter



Removable brands panel



Aluminum main frame structure with low noise & robustness

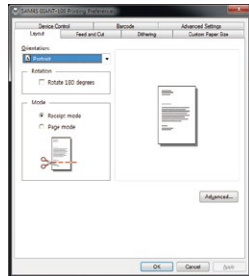


Easy assembly and disassembly with hand screws

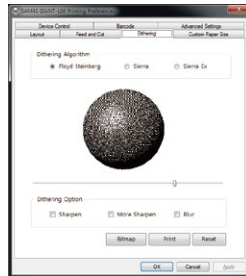


Automatic display pivot function at the wall-mount

New ELLIX Printer Windows Driver



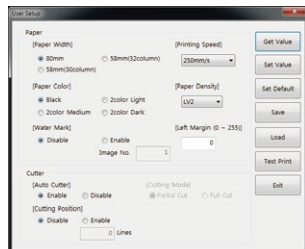
▲Layout
Setting of orientation, Rotation, Cutting mode



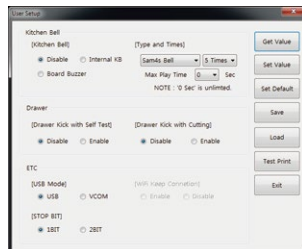
▲Dithering
3 Dithering algorithm, 4 Dithering options



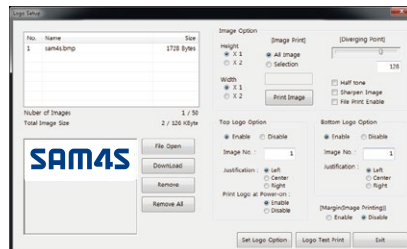
▲Barcode
Detailed setting functions for barcode (1D, 2D) printing



▲Print
Paper size, Printing speed, Watermark, Margin, Cutting



▲Peripherals
Kitchen bell, Cash drawer, Etc.



▲Logo
Preview and print support

SPECIFICATION

Model	ELLIX40 Series	ELLIX30 Series	
Submodel	ELLIX40II/42	ELLIX30III/32	
Printing Method	Thermal Line Printing		
Resolution	ELLIX40II : 180dpi / ELLIX42 : 203dpi	ELLIX30III : 180dpi / ELLIX32 : 203dpi	
Printing Speed	Mono Paper 80mm	ELLIX40II : Max.270mm/sec(63lines/sec) ELLIX42 : Max.220mm/sec(58lines/sec)	
	Mono Paper 58mm	ELLIX30III : Max.230mm/sec(55lines/sec) ELLIX32 : Max.180mm/sec(48lines/sec)	
	Two Color Paper	150 mm/sec	
Paper	Loading	100 mm/sec	
	Width	Drop-In Type	
	Diameter	Max. 80.0 mm / 58.0 mm Max. Ø 83.0 mm	
Memory	PGM Memory	10MByte	
	DATA Memory	2MByte	
	DATA Buffer	8MByte	
Reliability	Mechnism (MCFB)	64KByte	
	TPH	70,000,000 Lines	
	Auto Cutter	1 x 10 ⁸ Pulses / 150 Km 2,000,000 Cuts	
Drawer Port	2 Ports (+24V)		
Barcode	UPC-A, UPC-E, EAN8, EAN13, Code 39, Code 93, Code 128, IFT, CODABAR, PDF417, QRCode		
Driver / Utility	Windows Driver, OPOS Driver, JPOS Driver(Linux&Mac), Cups Driver(Linux&Mac), Utility Program		
SDK	iOS SDK, Android SDK		
Inttrface	USB Only, USB + Serial(25Pin), USB + Serial(9Pin + RJ45), USB + Parallel, USB + Bluetooth, USB + Wi-Fi, USB + Serial + Ethernet (3-Combo)	USB + Serial(25Pin), USB + Serial(9Pin + RJ45), USB + Parallel, USB + Wi-Fi, USB + Serial + Ethernet (3-Combo)	
Dimension (with Foot Rubber)	144(W) x 195(D) x 137(H) mm		
Weight	2.0 Kg		
Color	Black, White		
Emulation	EPSON, STAR		
Power Supply	DC 24V/2.5A		
Option	LCD Display	Yes	No
	Paper Near End Sensor	Default	Yes
	Kitchen Bell	Yes	Yes
	Wall Mount Kit	Yes	Yes
	Splash Cover	Yes	Yes
	Paper Partition (58mm)	Yes	Yes
NFC Tag	No	Yes	

* Without any prior notice, design and specification are subject to change.



Shinheung Precision Co.,Ltd / Seoul Office

9F, Flat-C, Woolim Lion's Valley, Gasan Digital 1Ro 168, Geumcheon-gu, Seoul, 08507, Korea
Tel, +82-2-2101-9623 | Fax, +82-2-2101-9690 | www.sam4s.com