



DLP-300 LABEL PRINTING SCALE

DLP-300

- 30lb & 60lb Capacity Dual Interval
- 20,000 PLU Including Ingredients Function
- WiFi & Ethernet Connection
- 45 Standard Label Formats & 67 Customer Design Label Formats
- Legal For Trade - # 17-054



Tech Support Videos



FEATURES

DISPLAY

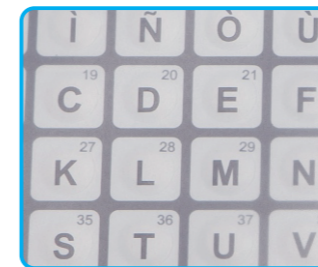
The Dot-matrix LCD with backlight display is used to display Tare, Weight, Unit Price and Total Price, PLU names and so on.



PLU KEYS

The Triple Click Call feature allows the operator to recall PLU s by Triple-clicking the speed key

The Pole Type comes equipped with a total of 168 Speed Keys.



PRINTER & LABEL CARTRIDGE

Achieve print speeds up to 100 mm/sec and printing resolution of 202 dpi for clear labels. The removable label cartridge makes user easy to quickly reload labels. Designed for simplicity.

LABEL FORMATS

The DLP-300 comes with 32 preset common label formats stored in memory. Up to 67 more custom label formats can be added using the label editing function of the XDB-Manager software program. Various die cut or continuous label sizes up to 150mm in length can be used.



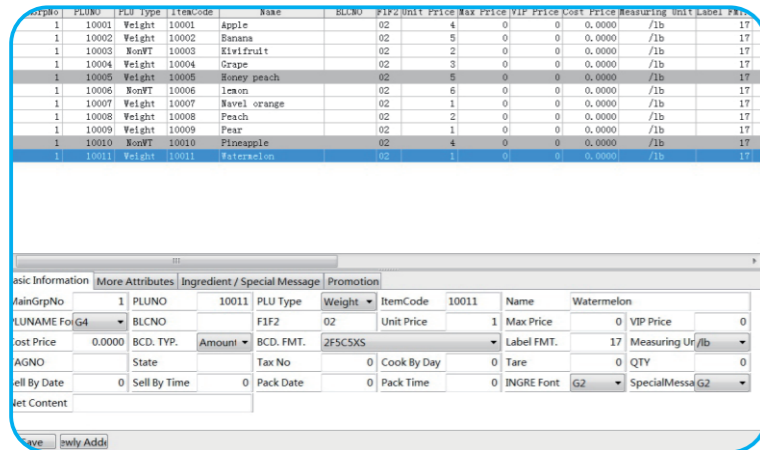
DLP-300

LABEL PRINTING SCALE

XDB-MANAGER - PC SOFTWARE

The XDB-Manager software program allows you to create and edit PLUs, program store information, design custom labels and unique keyboard layouts and much, much more.

Compatible with Microsoft Windows

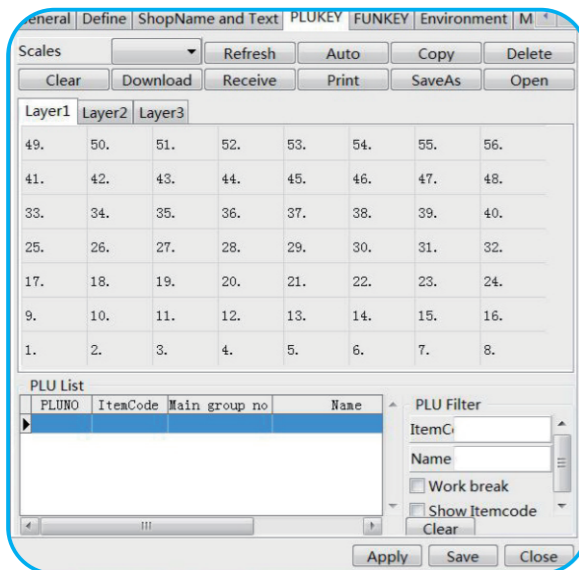
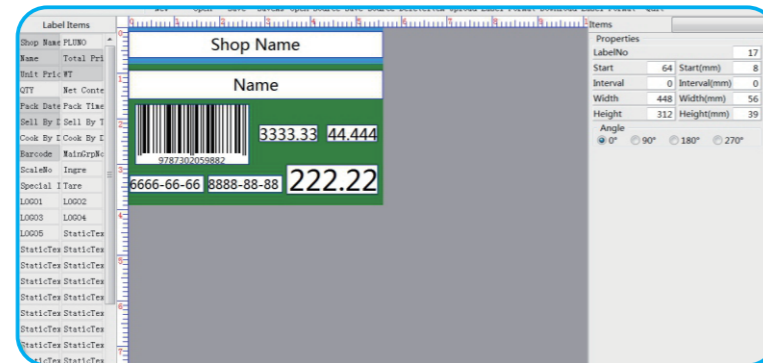


PLU Editor

Easy PLU Management control for all scales. PLU's can be imported and exported easily

Label Editor

Create and edit custom label formats. Easily download your custom labels to the scales.



Keypad Editor

Setup and download custom keyboard designs..

DLP-300

LABEL PRINTING SCALE

FEATURES

FEATURES

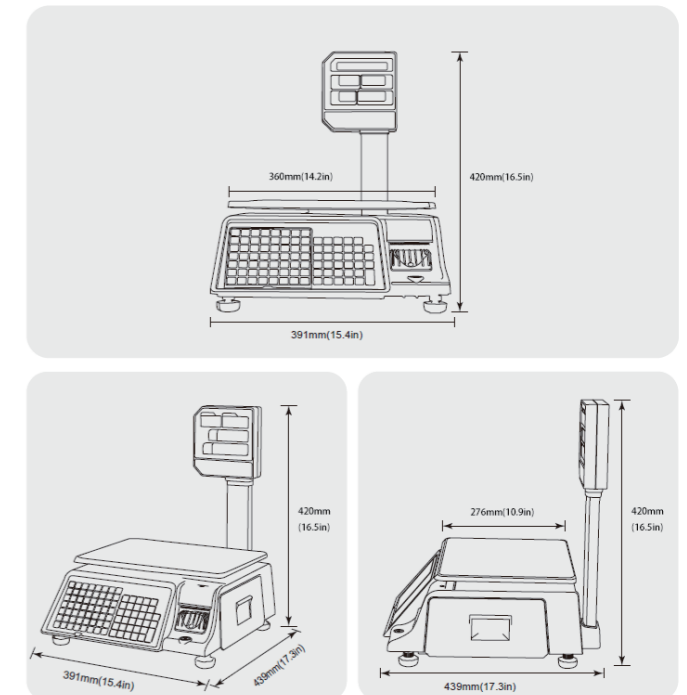
- 30lb/60lb Capacity Dual Interval
- Standard: 20,000 PLU's include Ingredients
- 168 Speed Keys(56 keys x 3)
- 32 Standard Label Formats & 67 Custom Labels
- High Speed Thermal Printer
- USB & network for easy firmware upgrades
- Multiple barcode formats

- English, Chinese, Korean, or Spanish Characters
- Menu Code System
- XDB-Manager Software Package Included
 - PLU Editor - Label Editor - Keypad Editor
 - Compatible with Microsoft Windows
- Ethernet, Wireless Networking, USB, RS-232C Built-in

SPECIFICATIONS

Models	DLP-300 Series
Capacity & Readability(lb)	30/60
	0.01/0.02
Resolution	1/3,000(Dual Interval)
Display type	LCD, Dot Matrix LCD with Back Light
Printing speed (mm/sec)	95
Label size (mm)	Width:40~60, Length:30~120
Operating temperature(°F/°C)	14~104 / -10~+40
Power	AC 120V, 50/60Hz
Platter size (in/mm)(WxD)	14.3x11.1 / 364x281
Dimensions(in/mm)(WxDxH)	15.4x17.3x21.2 / 391x439x541
Product Weight(lbs/kg)	25.5 / 11.5
Ship Weight(lbs/kg)	28.5 / 12.9
Warranty	One year

DIMENSIONS



USA Branch www.VisionTechShop.com
 100 Temple Ave. Hackensack, NJ 07601
 Tel: +1-201-679-7793

Head Office www.dbbalance.com.cn
 SHANGHAI DIGITAL BALANCE ELECTRONIC CO.,LTD
 Add: No.788 SongXiu Rd, Qingpu District,
 Shanghai, P.R.China
 Tel: 86-21-59757333 Fax: 86-21-69758587

Distributed by

Ver.1.1

Aug.2023