



# CL-5000 SERIES

## Label Printing Scale

- Dual Range 30 lb & 60 lb Capacities
- 3,000 PLU's & 1,000 Ingredients
- Optional Networking
- 50 Standard Label Formats
- Legal for Trade - COC # 07-042A2  
Measurement Canada - AM-5685

**Wireless  
Networking  
Available!**



Measurement  
Canada **Approved**

# CL-5000 SERIES | Label Printing Scale



Label Formats ▲

SIRLOIN	GROUND PORK	GROUND TURKEY	VEAL RIB	VEAL LEG	PORK CUBES	PORK LEG
CUBE STEAK	GROUND CHICKEN	GROUND LAMB	VEAL SHANK	VEAL BREAST	PORK SPARERIB	PORK RIBLET
CHUCK ROAST	GROUND VEAL	LAMB PATTIES	VEAL CUBES	VEAL CURE STEAK	PORK LOIN TOP LOIN	PORK STIR FRY
BEEF CUBES	CHICKEN KABOB	CHICKEN SKEWER	VEAL FOR STEV	VEAL BONES	PORK SAUSAGE	SMOKED BACON
SHORT RIBS	SHRIMP SKEWER	BEEF SKEWER	LAMB LOIN	LAMB RIB CHOPS	DUCK	DEESE

PLU Keys ▲



Label Cartridge ▲



Label Cartridge ▲



Pole Model ▶

Hanging Model ▶



Standard Bench Model ▶



## Features

### Display

The VFD Display is used to display Tare Weight, Unit Weight, Unit Price and Total Price. The high legibility LCD display is used to display PLU names, Scrolling Messages and Programming Menus.

### Keyboard

The Double Click Call feature allows the operator to recall PLUs by double-clicking the speed key instead of having to use the shift key.

The standard Bench Model comes equipped with 96 (48 x 2) quick look up keys while the Pole and Hanging Models have 144 (72 x 2). These keys may also be programmed to be special function keys.

### Printer & Label Cartridge

Achieve print speeds up to 100 mm/sec with a print resolution of 202 dpi. The removable Label Cartridge's simple design allows operators a method of quickly and easily reloading labels.

### Label Formats

The CL5000 supports various die cut or continuous label sizes up to 120mm in length with the 50 preset label formats stored in its memory. With the included CL-Works software program, you can add up to 20 more custom label formats.



Display ▲



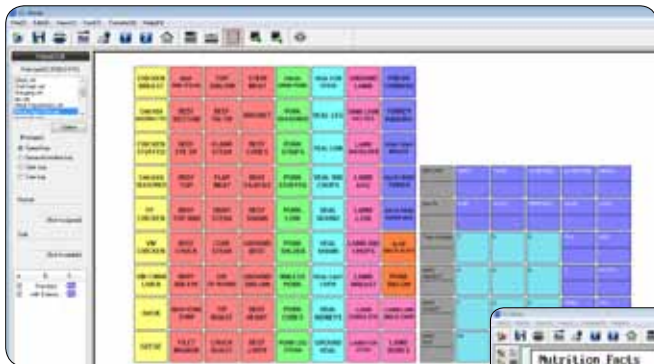
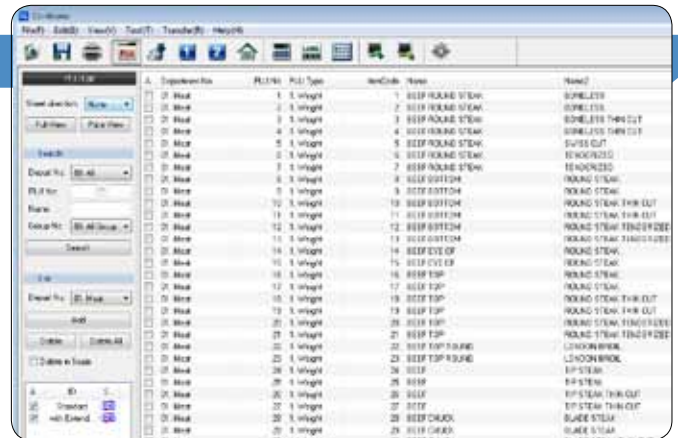


# CL Works - PC Software

## CL Works PC Software

The CL Works software program allows you to create and edit PLUs, program store information, design custom labels and unique keyboard layouts and much, much more.

Compatible with Microsoft Windows® 2000/XP/Vista/7



### Keypad Editor

- Setup and download custom keyboard designs. Use color images in your keys for easy recognition.



**Nutrition Facts Label!**

### PLU Editor

- Easy PLU Management control for all scales
- Simple import and export of PLU's
- Manage PLU's in multiple departments

### Label Editor

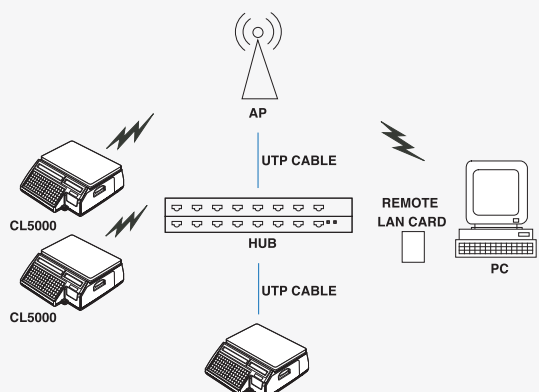
- Create and edit custom label formats. Easily download your custom labels to the scales.

# Optional Networking

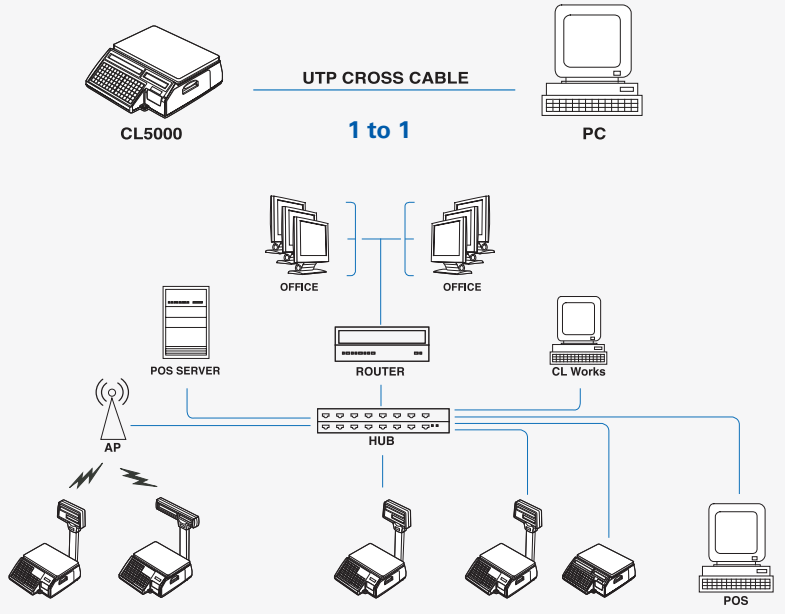
## Optional Networking

- TCP/IP Communications
- 100 Base T Ethernet
- IEEE 802.11b/g Wireless
- Supports WEP, WPA & WPA2 encryption
- Network Structure suitable for all markets

**Compatible w/E-PLUM Scale Management Software\***  
 A multi-vendor web-enabled solution that provides retailers with centralized control of in-store scales and printers. *Full-featured and easily implemented.*



Multi to Multi



Wired/Wireless Network

\*E-Plum Scale Management Software is owned and sold by Invatron Systems Corp. For more information on E-PLUM, please visit [www.invatron.com](http://www.invatron.com) or contact your local authorized CAS Dealer.

# CL-5000 SERIES | Label Printing Scales



## Features

- 30 lb and 60 lb Capacities - Dual Range
- Standard: 3,000 PLU's & 1,000 Ingredient Messages  
Optional: 10,000 PLU's & 1,500 Ingredient Messages
- Speed Keys  
CL5000B: 96 (48 keys x 2)  
CL5000R: 144 (72 keys x 2)  
CL5000H: 144 (72 keys x 2)
- 50 Standard Label Formats/Up to 20 Custom Labels
- High Speed Thermal Printer
- Flash ROM for easy firmware upgrades
- Multiple barcode formats
- English, Chinese, Korean, or Spanish Characters
- Menu Code System

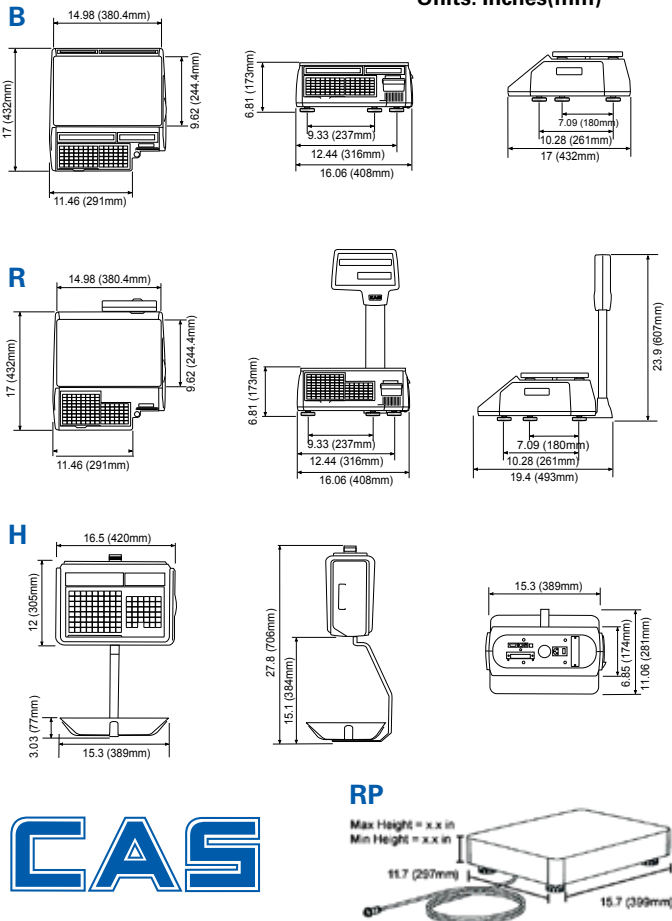
- CL-Works Software Package Included  
PLU Editor - Label Editor - Keypad Editor  
Compatible with Microsoft Windows® 2000/XP/Vista/7
- Works with E-PLUM Scale Management Software
- Approvals - NTEP COC # 07-042A2  
Measurement Canada - AM-5685

## Options

- Ethernet or Wireless Networking
- Expanded Memory
- Full Body Protective Cover
- Fish Pan
- Remote Platform
- Label Cartridge

## DIMENSIONS

Units: Inches(mm)



## SPECIFICATIONS

Model	CL-5000B	CL-5000R	CL-5000H	CL-5000RP
Weighing Capacity	30 lb Capacity Dual Range 0 - 15 x 0.005 lbs / 15 - 30 x 0.01 lbs - 0 - 6 x 0.002 kg / 6 - 15 x 0.005 kg			
	60 lb Capacity Dual Range 0 - 30 x 0.01 lbs / 30 - 60 x 0.02 lbs - 0 - 15 kg x 5 g / 15 - 30 kg x 10g			
Measurement Type	Load Cell			
Display Type	VFD & Alphanumeric			
Display Digit	4/4/6/6 - Tare/Weight/Unit Pr/Total Pr			
Weight Units	lb or kg			
Printer	Thermal Print			
Label Size	Width: 40mm ~ 60mm - Length: 30mm ~ 120mm			
Barcode Formats	UPC-A, UPC13, EAN13, EAN13+5, I2of5, Code128, Code93, Codabar, and more			
Interface	RS-232C / TCP/IP			
Keyboard Interface	PS/2			
Power Source	AC 100 ~ 240V, 50/60Hz			
Operating Temp	-10°C ~ 40°C / 14°F ~ 104°F			
Platter Size (in/mm) (W) x (D)	15 x 9.6 381 x 244	15 x 9.6 381 x 244	15.3 x 11.06 389 x 281	15.75 x 11.8 x 3.4(H) 400 x 300 x 86(H)
Dimensions (in/mm) (W) x (D) x (H)	16 x 17 x 6.8 406.4 x 432 x 173	16 x 17 x 23.9 406.4 x 432 x 607	16.5 x 11.06 x 27.8 420 x 281 x 706	11.7(W) x 15.7(L) 297 x 399
Product Weight	24 lbs (10.9 kg)	25 lbs (11.3 kg)	31.3 lbs (14.2 kg)	23.8 lbs (10.8 kg)



CAS Corporation  
99 Murray Hill Parkway  
East Rutherford, NJ 07073  
(800) 223-4227 • Fax (201) 933-9025  
<http://www.cas-usa.com>

Specifications are subject to change for improvement without prior notice.