

BATTERY WEIGHING SCALE

BW-SERIES

SERVICE MANUAL

Revision : 2005. 5. 9

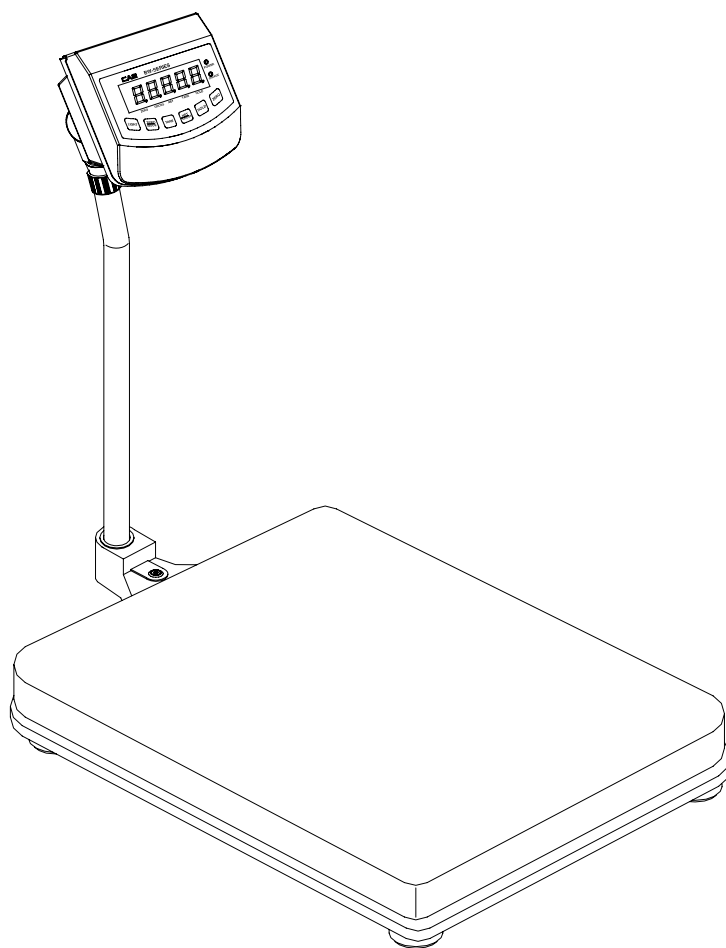


Table of Contents

INTRODUCTION	3
TECHNICAL SPECCIFICATION	3
INSTALLATION & CONNECTION	4
TEST MODE	5
CALIBRATION MODE	7
SET MODE	9
SCHEMATIC DIAGRAM	10
P.C.B DIAGRAM	11
CONNECTION DIAGRAM	13
PART LIST	14
EXPLODED VIEW	19
ERROR MESSAGE & TROUBLE SHOOTING	23

INTRODUCTION

The service manual is the specification for the BW-SERIES. They have been designed with CAS reliability under rigid quality control and with outstanding performance.

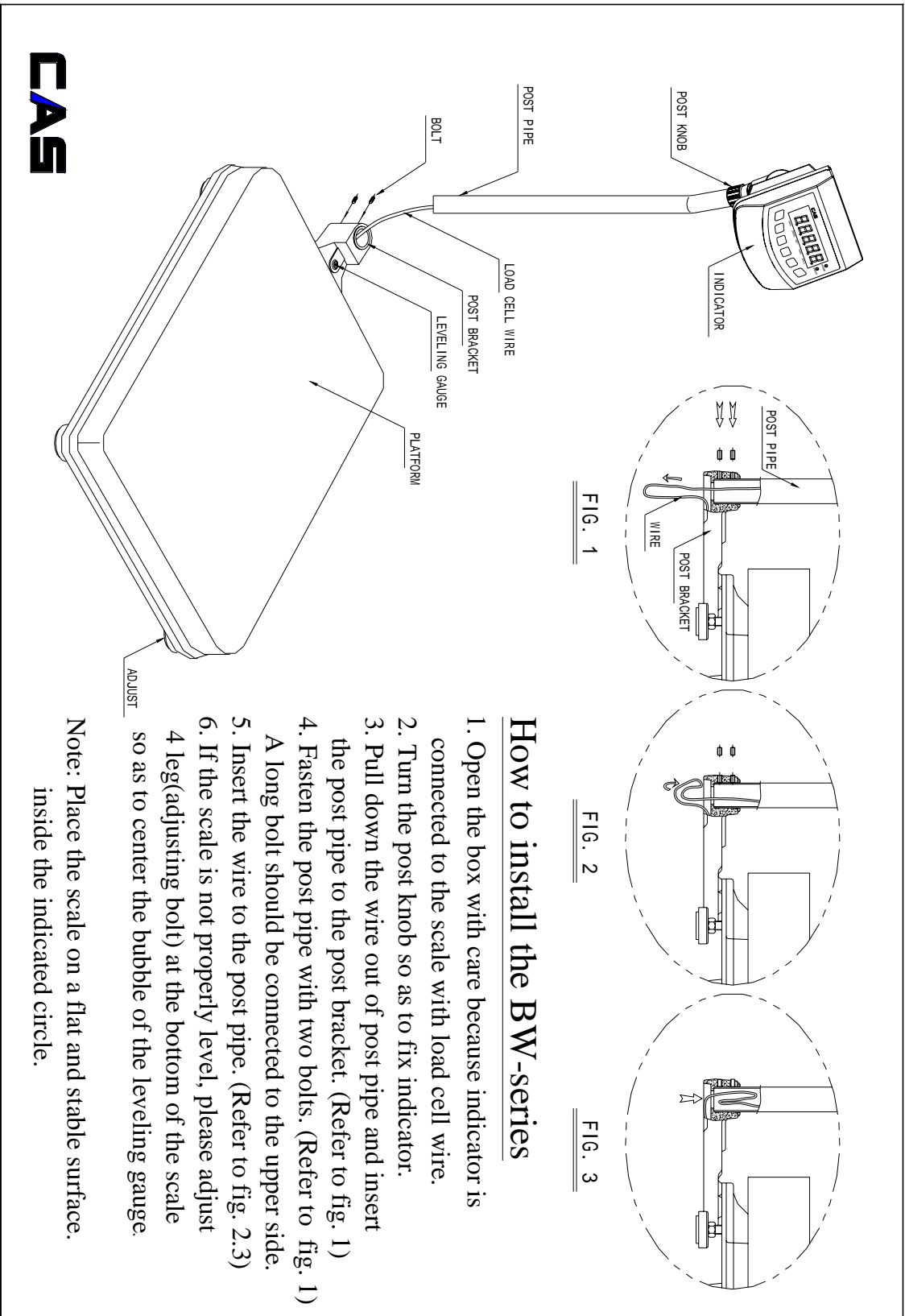
This manual includes basic technical about composition of hardware and program function.

TECHNICAL SPECIFICATION

Model \ Item	BW SERIES				
	BW-6	BW-15	BW-30	BW-60	BW-150
Maximum capacity	6kg	15kg	30kg	60kg	150kg
Minimum division	0.002kg	0.05kg	0.01kg	0.02kg	0.05kg
Platform size	280(W) X 280(D) X 80(H)			425(W) X 545(D) X105(H)	
Function	Standard	ON/OFF, ZERO, TARE, HOLD, COUNT, HIGH/LOW comparing			
	Option	1. RS-232C 2. BACK LIGHT 3. DC 1.2V(6EA) Recharging Battery, DC 12V Adaptor			
Temperature range	-10 ~ 40				
Max. Tare range	Max. capacity				
Rezero range	±2% of max. capacity				
Initial zero range	±10% of max. capacity				
Weight display type	5 place LCD(Char. size 23.5 mm)				
Character display	1. Stable (o) 2. High, Normal, Low (HI , OK , LO) 3. Battery discharge (BAT) 4. quantity unit(PCS) 5. Weight unit(kg)				
Power	1. DC7.2V(6EA SIZE "C") 2200 mA h Recharging battery 2. DC9V (6EA SIZE "C") Mn, Alkaline battery 3. DC12V 850 mA AC Adapter				
Consumption	Approx. 0.15W				

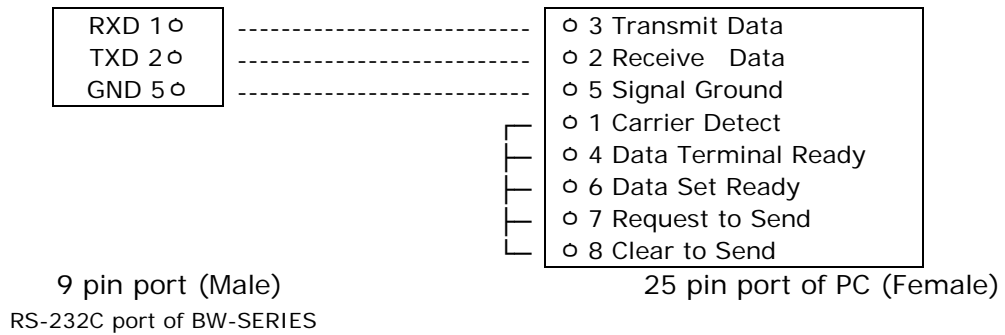
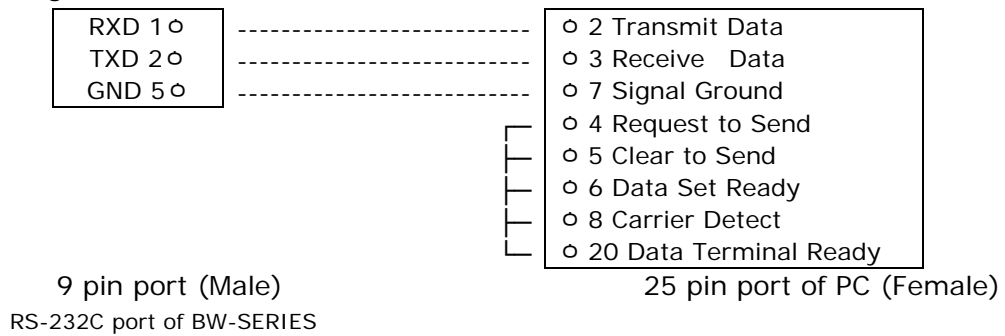
INSTALLATION & CONNECTION

Installation

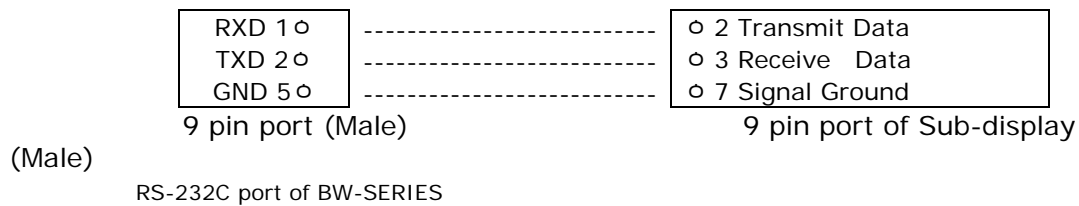


Serial Interface (RS-232C)

Connecting with PC



Connecting with Sub-display (CD-SERIES)



TEST MODE

Moving method

Open the top cover of indicator and power on with pressing CAL switch in the left top. At that time, LCD screen shows "ZEro=tESt tArE=CAL" message and pressing 'Zero' key moves to Test 1.

Test menu (tESt 1 ~ tESt 4)

- TEST 1: Liquid crystal display test
- TEST 2: A/D conversion test
- TEST 3: Key test
- TEST 4: RS-232C communication test

TEST 1 (Enter 'TEST' mode to start TEST 1.)

FUNCTION : Liquid crystal display Test

KEY	LC DISPLAY	DESCRIPTION
ENTER Key : Next menu		Display TEST 1 state.

TEST 2

FUNCTION : A/D conversion test

KEY	LC DISPLAY	DESCRIPTION
ENTER Key : Next menu		Display TEST 2 state.
ZERO Key : Use to set the current value to "0"		Display the digital value corresponding to current weight.

Note 1. Check whether the digital value is changing whenever you load or unload the weight on the platter. If the digital value is fixed or zero is displayed, please check the connection of loadcell.

TEST 3

FUNCTION : Key test

KEY	LC DISPLAY	DESCRIPTION
ENTER key : Next menu		Display TEST 3 state.
Other key : Test execution		Press the key to be tested and the No. of key mode should be identifying with code of key as the follows.

<KEY CODE>

KEY	CODE	KEY	CODE
*	1	GROSS /NET	4
ZERO	2	HOLD or kg/lb	5
TARE	3		

TEST 4

FUNCTION : RS-232C communication test

KEY	LC DISPLAY	DESCRIPTION
ENTER key : Move to weighing mode.		Display TEST 4 state.
Other key : Execute data transmission to a computer.		Waiting for transmission and reception.
		Received : None, Transmitted : 1
		Received : 2, Transmitted : 1
		Press ENTER key.
		When this test is completed, it is automatically moved to NORMAL MODE.

Note 1. Connect the computer COM port with RS232C connector of indicator before running this test.

Note 2. Send No. 2 in computer keyboard and check if indicator receives No.2 send No. 1 in indicator keyboard and check if computer receives No.1

CALIBRATION MODE

Moving method

Open the top cover of indicator and power on with pressing CAL switch in the left top. At that time, LCD screen shows "ZEro=tESt tArE=CAL" message and pressing 'TARE' key moves to CAL 1.

Calibration menu (CAL 1 ~ CAL 5)

- CAL 1 : Maximum Capacity Set
- CAL 2 : Minimum Division Set
- CAL 3 : Setting Weight in Span Calibration
- CAL 4 : Zero Calibration
- CAL 5 : Span Calibration

Digit input method

- NET/GROSS Key : Increase the first place value by 1.
- TARE Key : Move to the left by 1 place.
- ZERO/MODE Key : Set the inputted value to "0".
- ENTER Key : Move to the next menu.

CAL 1

FUNCTION : Maximum Capacity Set (Range : 1 ~ 99,999)		
KEY	LC DISPLAY	DESCRIPTION
Input by digit input method. ENTER : save and go to next menu		CAL 1 condition
		200 Kg



CAL 2

FUNCTION : Minimum Division Set (Range : 0.001 ~ 50)		
KEY	LC DISPLAY	DESCRIPTION
NET/GROSS key: Input the next division TARE key: Input the previous division ENTER key: Move to the next menu		CAL 2 condition
		0.5 Kg

- Note 1. The minimum division means the value of one division.
- Note 2. External resolution is obtained by dividing the min. division by the maximum capacity. Set the resolution to be within 1/10,000.
- Note 3. The maximum capacity/minimum division is over 10,000, error message "CH 11" will occur.

CAL 3



FUNCTION : Setting Weight In Span Calibration

KEY	LC DISPLAY	DESCRIPTION
Input by digit input method. ENTER : save and go to next menu	 	CAL 3 condition 200 Kg

- Note 1. The span weight shall be within 10-100% of maximum capacity.
The initial span weight is 100% of max. capacity but if the current span weight is different from it, input the desired weight again.
- Note 2. The span weight shall be above 10% of maximum capacity.
If not so, an error message "ERR22" is shown.
- Note 3. Never install the span weight higher than maximum capacity because an error message "ERR23" is shown.

CAL 4





FUNCTION : Zero Calibration

KEY	LC DISPLAY	DESCRIPTION
ENTER key : Move to next menu after zero calibration	 	Empty the platform and when LCD screen shows "ULOAD", press 'ENTER' key. After completing zero calibration, it will be automatically moved to CAL 5.

- Note 1. Zero calibration is performed automatically by program.
Loadcell output is automatically adjusted within 0.05mV and 5mV.

CAL 5

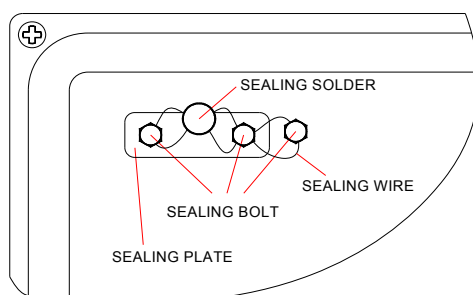
FUNCTION : Span Calibration

KEY	LC DISPLAY	DESCRIPTION
ENTER key : Span calibration	   	Put the weight set in CAL3 on platform and press 'ENTER' key. Span calibration is terminated. Error occurrence. Move into initial menu automatically.

- Note 1. Display "END" message and move into the NORMAL MODE at completion of span calibration
- Note 2. At occurrence of ERR24, reset by lowering the resolution.

Sealing method

Perform the sealing as shown in the below figure after the calibration is completed.
Open the top cover.
Cover CAL switch in the left top of cover with sealing plate and screw 2 sealing bolt.
Connect the sealing wire as follows and compress the sealing lead.



SET MODE

Moving method

If you press the * key for three seconds to normal operation state, after display "SET" message for one second and then enter F-1 menu.

Available keys

NET/GROSS Key : Increase the set point.

TARE Key : Move to the next menu.

ENTER Key : Return to the normal operation at completion of setting.

Set menu (F1 ~ F2)

F-1	Auto power OFF setting
F-2	RS-232C communication setting

F01

Auto power OFF setting

Auto power OFF function is used to spare the battery by means of power off when this scale is not used.

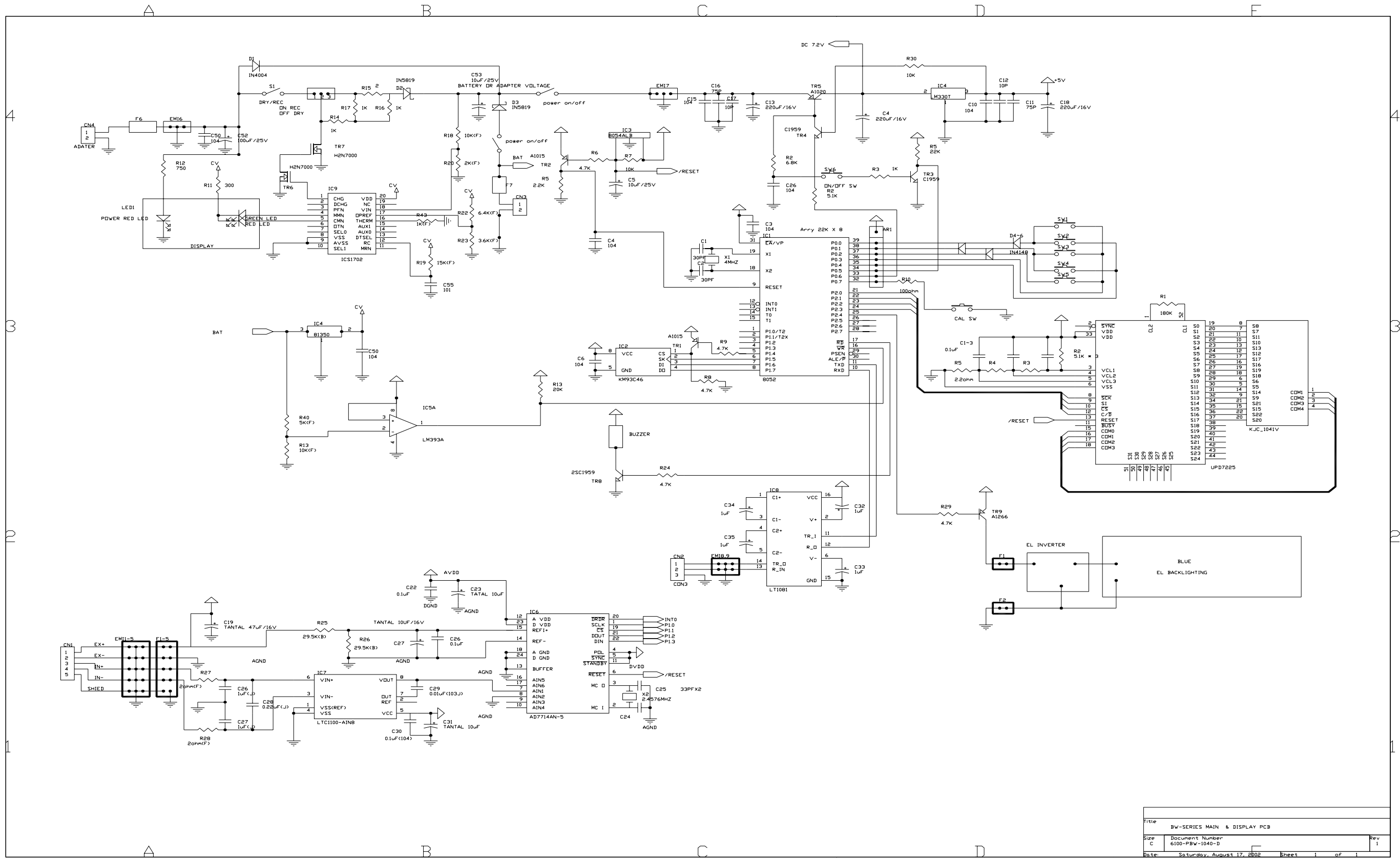
Display	Description
F-1 0	Auto power OFF is not used.
F-1 1	Automatically power off when the weight is not changed or no key is used for 5 min.

F02

RS-232C communication setting

Display	Description
F-2 0	No transmit.
F-2 1	Transmit at both stable and unstable weight.
F-2 2	Transmit at stable weight.
F-2 3	Transmit at data request. (Data request signal "D")

SCHEMATIC DIAGRAM

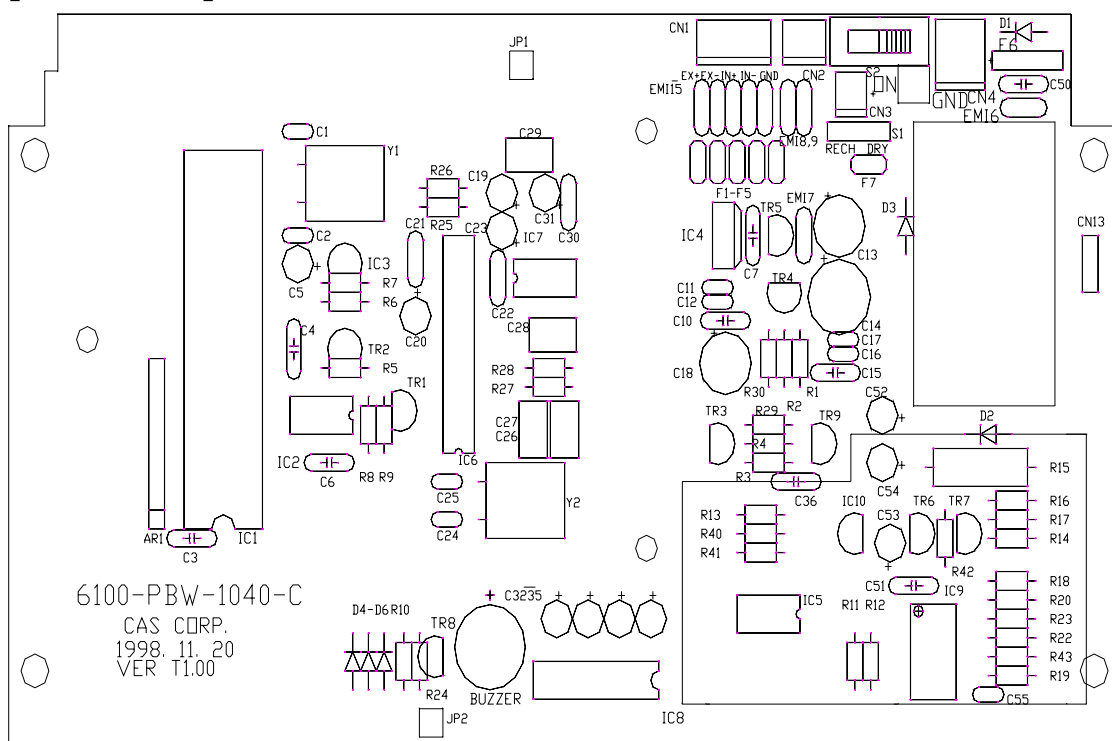


Title		
BW-SERIES MAIN & DISPLAY PCB		
Size	Document Number	Rev
C	6100-PBW-1040-D	1
Date	Saturday, August 17, 2002	Sheet 1 of 1

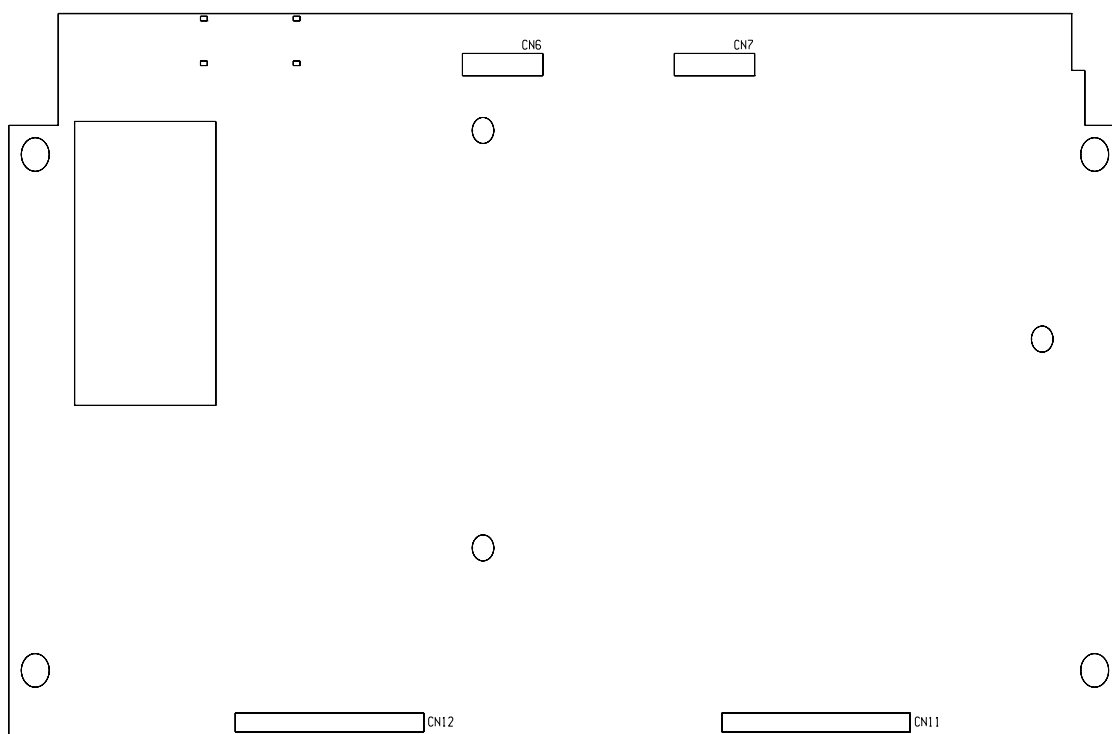
P.C.B DIAGRAM

MAIN PCB

[TOP SIDE]

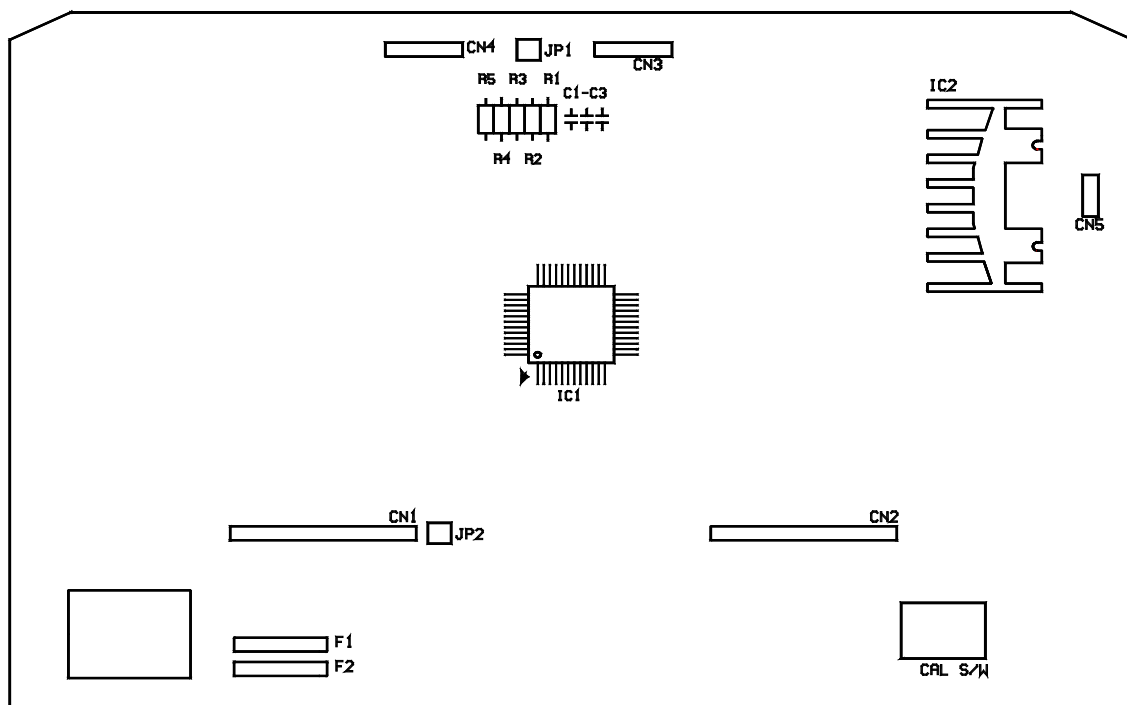


[BOTTOM SIDE]

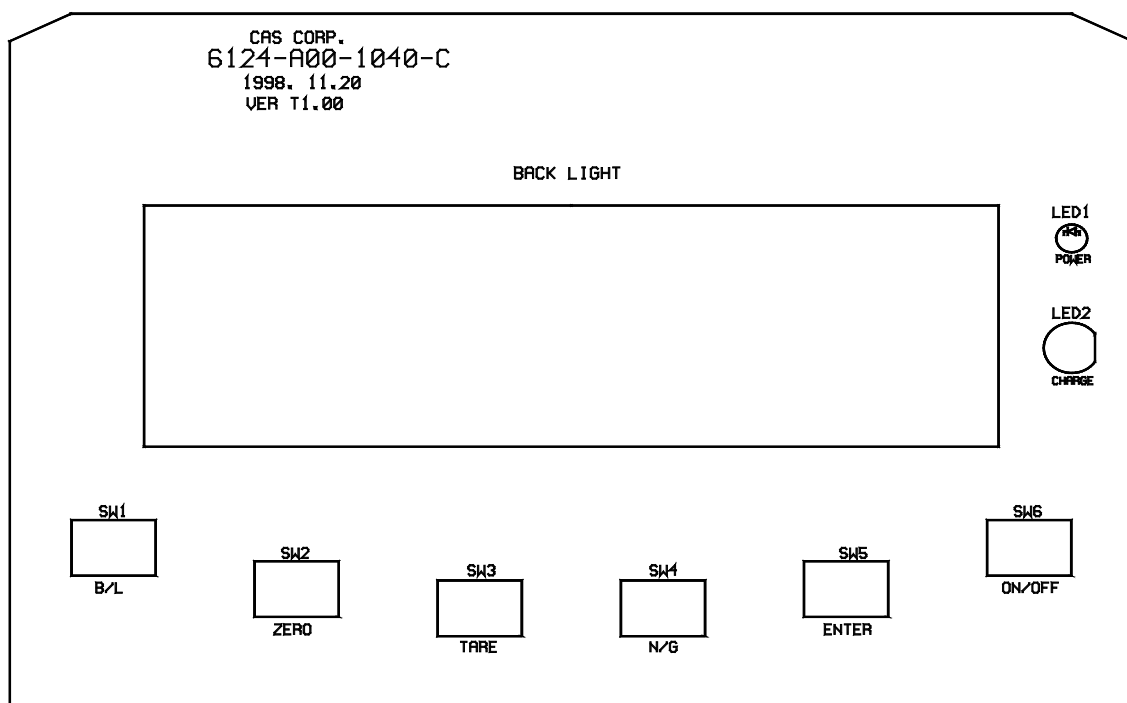


DISPLAY PCB

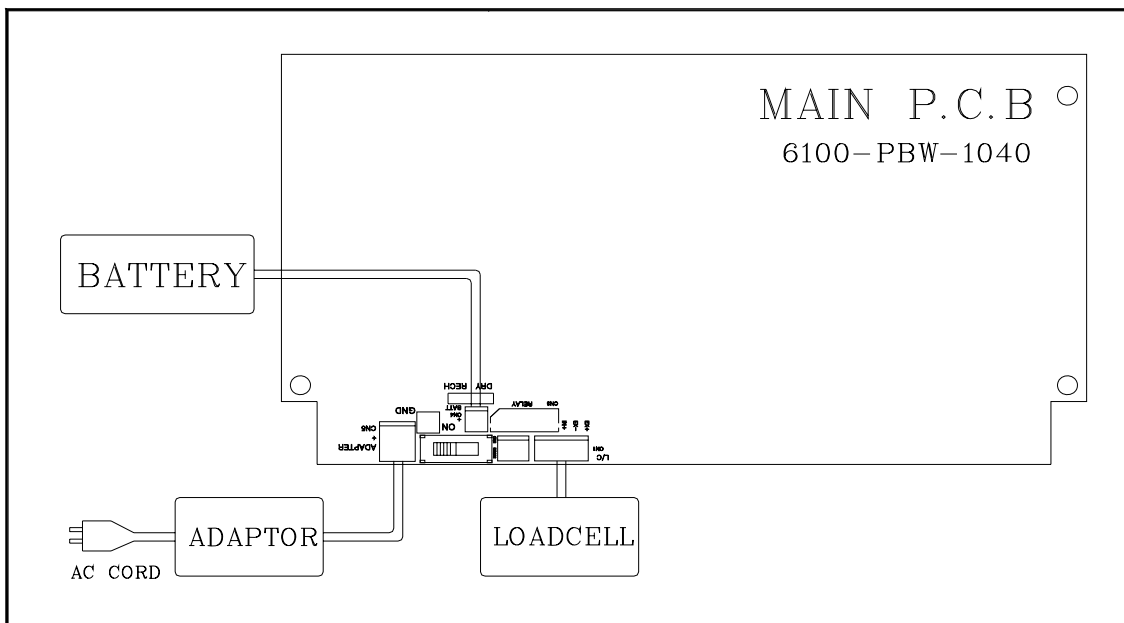
[TOP SIDE]



[BOTTOM SIDE]



CONNECTION DIAGRAM



PART LIST

DISPLAY PCB ASS'Y

BW-D/R TYPE

CODE	ITEM	SPEC	UNIT	Q'TY	REMARK
1050-A00-0468-0	HEAT SINK	SY-468	EA	1	SOCKET OF IC2
2090-H00-0011-0	LED HOLDER	STD-110BLK(1mm)	EA	1	
6110-PBW-1040-C	PCB-DISPLAY	6110-PBW-1040-C(BW/BI)	EA	1	1998.11.20
6224-I00-7225-0	IC(DRIVER)	UPD 7225G00	EA	1	IC1
6241-I00-0317-0	IC(LINEAR)	LM-317T	EA	1	IC2
6515-CJ0-0022-0	RESISTOR 1/4W	CFR 2.2 (±5%)	EA	1	R5
6515-CJ3-0051-0	RESISTOR 1/4W	CFR 5.1K (±5%)	EA	3	R2-4
6515-CJ3-1800-0	RESISTOR 1/4W	CFR 180K (±5%)	EA	1	R1
6714-CAP-0104-0	CONDENSER-MONOLITHIC	0.1uF/25V	EA	3	C1-3
6800-F00-3580-0	EMI BEAD FILTER	BFS-3580 AO 3.5*8	EA	2	F1,2
7212-D00-1041-A	LCD	90043-T/F(BW,2400BS)	EA	1	LCD
7232-D00-0300-0	LED LAMP	CLL30231(BVL-300E5G)	EA	1	LED1
7232-DRG-0003-0	LED LAMP	ø3-(R,G) BL-BVT 201(A)	EA	1	LED2
7600-STA-1104-A	TACT S/W	KPT-1104B(DJTA-1112A)	EA	6	SW1-6
7600-STA-1212-0	TACT S/W	12*12(SKHK)DJTA-1103E	EA	1	CAL SW
7702-G00-0012-0	PCB SUPPORT	DABS-12R	EA	4	
7810-C00-9299-0	CONNECTOR	929974-40 (FEMALE)	EA	2	CN1-5

BW-DB/RB TYPE

CODE	ITEM	SPEC	UNIT	Q'TY	REMARK
1050-A00-0468-0	HEAT SINK	SY-468	EA	1	SOCKET OF IC2
2090-H00-0011-0	LED HOLDER	STD-110BLK(1mm)	EA	1	
6110-PBW-1040-C	PCB-DISPLAY	6110-PBW-1040-C(BW/BI)	EA	1	1998.11.20
6224-I00-7225-0	IC(DRIVER)	UPD 7225G00	EA	1	IC1
6241-I00-0317-0	IC(LINEAR)	LM-317T	EA	1	IC2
6515-CJ0-0022-0	RESISTOR 1/4W	CFR 2.2 (±5%)	EA	1	R5
6515-CJ3-0051-0	RESISTOR 1/4W	CFR 5.1K (±5%)	EA	3	R2-4
6515-CJ3-1800-0	RESISTOR 1/4W	CFR 180K (±5%)	EA	1	R1
6714-CAP-0104-0	CONDENSER-MONOLITHIC	0.1uF/25V	EA	3	C1-3
6800-F00-3580-0	EMI BEAD FILTER	BFS-3580 AO 3.5*8	EA	2	F1,2
7212-D00-1041-A	LCD	90043-T/F(BW,2400BS)	EA	1	LCD
7222-D00-0135-0	E.L BACK LIGHT	SPD-96-1359(EL-12C(BW)	EA	1	
7232-D00-0300-0	LED LAMP	CLL30231(BVL-300E5G)	EA	1	LED1
7232-DRG-0003-0	LED LAMP	ø3-(R,G) BL-BVT 201(A)	EA	1	LED2
7244-D00-0005-A	E.L INVERTER	MTED-I-5C	EA	1	
7600-STA-1104-A	TACT S/W	KPT-1104B(DJTA-1112A)	EA	6	SW1-6
7600-STA-1212-0	TACT S/W	12*12(SKHK)DJTA-1103E	EA	1	CAL SW
7702-G00-0012-0	PCB SUPPORT	DABS-12R	EA	4	
7810-C00-9299-0	CONNECTOR	929974-40 (FEMALE)	EA	2	CN1-5

MAIN PCB ASS'Y

CODE	ITEM	SPEC	UNIT	Q'TY	REMARK
6100-PBW-1040-D	PCB-MAIN	6100-PBW-1040-D	EA	1	1999.01.29
6200-IPU-1702-0	IC(CPU)	ICS1702M(SOIC)	EA	1	IC9
6200-IPU-9752-0	IC(CPU)	GM97C52,GMS90C52(LG)	EA	1	IC1
6205-100-9346-0	IC(EEP ROM)	S-93C46	EA	1	IC2
6210-100-8054-0	IC(RESET)	S-80841ALY	EA	1	IC3
6214-100-7714-A	IC	AD-7714AN-5	EA	1	IC6
6220-100-2931-A	IC(REGULATOR)	LM2931AZ-5.0(SW TYPE)	EA	1	IC10
6240-100-1081-0	IC(OP AMP)	HIN232CP(ICL232CP,LT10	EA	1	IC8
6240-100-1100-0	IC	LTC1100-CN8(BI,BW)	EA	1	IC7
6241-100-0330-0	IC(LINEAR)	LM-330T	EA	1	IC4
6241-100-0393-0	IC(LINEAR)	LM393N	EA	1	IC5
6260-100-0016-0	IC SOCKET	ZF16A	EA	1	SOCKET OF IC8
6260-100-0040-0	IC SOCKET	40 PIN	EA	1	SOCKET OF IC1
6273-100-7000-0	FET	2N7000(TR-TYPE)	EA	2	TR6,7
6280-100-1015-0	TRANSISTOR	2SA1015(1266)	EA	4	TR1,2,8,9
6280-100-1020-0	TRANSISTOR	2SA1020	EA	1	TR5
6280-100-1959-0	TRANSISTOR	2SC1959	EA	2	TR3,4
6291-IPO-4004-0	DIODE-POWER	1N4004	EA	1	D1
6291-IPO-5819-0	DIODE-POWER	1N5819	EA	2	D2,3
6294-ISW-4148-0	DIODE-SWITCHING	1N4148P	EA	3	D4~6
6505-MB3-0295-0	RESISTOR 1/4W	MFR 29.5K (±0.1%)-B	EA	2	R25,26
6505-MFO-0020-0	RESISTOR 1/4W	MFR 2 (±1.0%)-F	EA	2	R27,28
6505-MF3-0010-0	RESISTOR 1/4W	MFR 1K (±1.0%)-F	EA	4	R13,14,16,17
6505-MF3-0020-0	RESISTOR 1/4W	MFR 2K (±1.0%)-F	EA	1	R20
6505-MF3-0036-0	RESISTOR 1/4W	MFR 3.6K (±1.0%)-F	EA	1	R23
6505-MF3-0050-0	RESISTOR 1/4W	MFR 5K (±1.0%)-F	EA	1	R41
6505-MF3-0064-0	RESISTOR 1/4W	MFR 6.4K (±1.0%)-F	EA	1	R22
6505-MF3-0100-0	RESISTOR 1/4W	MFR 10K (±1.0%)-F	EA	3	R18,40,42
6505-MF3-0150-0	RESISTOR 1/4W	MFR 15K (±1.0%)-F	EA	1	R19
6505-MF3-0200-0	RESISTOR 1/4W	MFR 20K (±1.0%)-F	EA	1	R13
6512-CJ0-0020-0	RESISTOR 2W	CFR 2 (±5%)	EA	1	R15
6515-CJ0-1000-0	RESISTOR 1/4W	CFR 100 (±5%)	EA	1	R10
6515-CJ0-3000-0	RESISTOR 1/4W	CFR 300 (±5%)	EA	1	R11
6515-CJ0-7500-0	RESISTOR 1/4W	CFR 750 (±5%)	EA	1	R12
6515-CJ3-0010-0	RESISTOR 1/4W	CFR 1K (±5%)	EA	1	R3
6515-CJ3-0022-0	RESISTOR 1/4W	CFR 2.2K (±5%)	EA	1	R5
6515-CJ3-0047-0	RESISTOR 1/4W	CFR 4.7K (±5%)	EA	5	R6,8,9,24,29
6515-CJ3-0051-0	RESISTOR 1/4W	CFR 5.1K (±5%)	EA	1	R2
6515-CJ3-0068-0	RESISTOR 1/4W	CFR 6.8K (±5%)	EA	1	R1
6515-CJ3-0100-0	RESISTOR 1/4W	CFR 10K (±5%)	EA	2	R7,30
6515-CJ3-0220-0	RESISTOR 1/4W	CFR 22K (±5%)	EA	1	R4
6550-M09-0223-0	RESISTOR-NETWORK	M9-1-223J(BW)	EA	1	AR1
6700-C16-0010-0	CONDENSER-TANTAL	10uF/16V	EA	3	C20,23,31
6700-C16-0047-0	CONDENSER-TANTAL	47 µF/16V	EA	1	C19
6704-C16-0001-0	CONDENSER-ELECTRIC	1uF/16	EA	1	
6704-C16-0010-0	CONDENSER-ELECTRIC	10uF/16V	EA	1	C5
6704-C25-0100-0	CONDENSER-ELECTRIC	100uF/25V	EA	2	C52,53
6704-C25-0220-0	CONDENSER-ELECTRIC	220uF/25V	EA	3	C13,14,18
6704-C50-0001-0	CONDENSER-ELECTRIC	1uF/50V	EA	4	C32~35
6710-CAP-0104-0	CONDENSER-CERAMIC	0.1uF/25V(50V)	EA	10	C3,4,6,7,10,15,36,50,51
6710-CAP-P100-0	CONDENSER-CERAMIC	10 PF/50V	EA	2	C11,17
6710-CAP-P101-0	CONDENSER-CERAMIC	100PF/50V	EA	1	C55
6710-CAP-P300-0	CONDENSER-CERAMIC	30PF/50V	EA	2	C1,2
6710-CAP-P330-0	CONDENSER-CERAMIC	33PF/50V	EA	2	C24,25
6710-CAP-P750-0	CONDENSER-CERAMIC	75PF/50V	EA	2	C12,16
6714-CAP-0104-0	CONDENSER-MONOLITHIC	0.1uF/25V	EA	3	C21,22,30
6720-CAP-0103-0	CONDENSER-POLYESTER	0.01uF/63V-J(BOX)	EA	1	C28
6720-CAP-0104-A	CONDENSER-POLYESTER	0.1uF/63V-J(BOX)	EA	2	C20,27
6720-CAP-0224-A	CONDENSER-POLYESTER	0.22uF/63V-J(BOX)	EA	1	C29
6800-F00-0220-0	EMI FILTER	EFST221YTB(220PF)	EA	9	EM1~9
6800-F00-3580-0	EMI BEAD FILTER	BFS-3580 AO 3.5*8	EA	7	F1~7
7002-Z00-0120-0	PIEZO BUZZER	14A4012P(EFM-250A)	EA	1	BUZZER
7010-ZM0-0245-0	CRYSTAL	2.4576MHz	EA	1	Y2
7010-ZM0-0400-A	CRYSTAL	4MHz	EA	1	Y1
7600-SLD-0002-0	SLIDE S/W	INCA-2(DJMM-12V)	EA	1	S1
7600-SLD-2201-0	SLIDE S/W	JSS-2201(BIBW)	EA	1	S2
7801-CLW-0001-0	CONNECTOR(WAFER)	1100-1(2-SP)-01(2)	EA	2	JP1,2
7801-CLW-0002-0	CONNECTOR(WAFER)	LW0640-02 (LPH01-02)	EA	1	CN3
7801-CLW-0003-0	CONNECTOR(WAFER)	LW0640-03 (LPH01-03)	EA	1	CN2
7801-CLW-0005-A	CONNECTOR(WAFER)	LW0640-05(GOLD) (LPH01	EA	1	CN3
7804-CCN-7302-0	CONNECTOR(WAFER)	5273-02 (LPH03-02)	EA	1	CN4
7810-C00-9294-0	CONNECTOR	929400-40(MALE)	EA	2	CN6,7,11,12

HEAD ASS'Y

CODE	ITEM	SPEC	UNIT	Q'TY	REMARK
1000-A00-0043-0	BATTERY CONTACT A	ø1*20*4*ø20(DOLBO)	EA	1	5-5
1035-A00-0015-0	PCB PLATE	180*150*0.8(BI)	EA	1	3-4
1035-A00-0017-0	BAR GUIDE PLATE	19*9*1.2T(BI)	EA	1	2-9
1035-A00-0018-0	SUPPORT PLATE	104*11*1.2T(BI)	EA	1	6-3
1035-A00-0019-0	LEVER GUIDE PLATE	67*21*12T(BI)	EA	1	2-5
1035-A00-0045-0	SUPPORT BAR PLATE	105*10*5*1.6T	EA	1	2-10
1035-A00-0082-0	BAR GUIDE BRACKET	72*29.4*7.5*1.5T(BW)	EA	1	4-5
1215-A00-0003-0	SHAFT A	28*166(BI)	EA	1	2-7
1215-A00-0004-0	SHAFT B	28*50(BI)	EA	1	2-6
1265-A00-0001-0	BOLT-SEALING	M3*9(,HEAD 3mm)	EA	1	3-7
1507-A00-0313-0	BOLT-CONNECTOR	M3*13(H)*10(D)	EA	1	2-12
1512-A00-0306-0	SCREW-TAPPING(PH)-2	M3*6	EA	7	3-5, 5-8
1512-A00-0310-0	SCREW-TAPPING(PH)-2	M3*10	EA	13	2-13, 3-6, 4-6, 6-5
1590-A00-0001-0	BATTERY SPRING B	ø1*4*21(DL,EP)	EA	1	5-6
1590-A00-0002-0	BATTERY SPRING C	ø1*20*21(DL,EP)	EA	1	5-7
1595-A00-0005-0	KNOB SPRING	1*3.5*3/4(BW)	EA	1	2-8
1595-A00-0015-A	GROUND SPRING	ø1*ø17*15(BW)	EA	1	4-9
	SPEC PLATE	PW-STICKER TYPE	EA	1	6-4
	CAPACITY PLATE	BW-SERIES	EA	1	1-3
2005-A00-0014-B	BODY	205*220*55(ABS)BI	EA	1	4-1
2005-A00-0015-A	FRONT COVER	205*220*32(ABS)BI	EA	1	1-1
2005-A00-0021-0	DOOR KNOB	40*33*12(BI)	EA	1	2-4
2014-A00-0002-0	BATTERY HOLDER	161*59*30(EP,BW)	EA	1	3-3
2015-A00-0002-A	DISPLAY COVER(ACRIL)	BI-SERIES(153.6*60*2T)	EA	1	2-3
	KEY BOARD PAD	BI,BW-CAS	EA	1	2-2
2605-A00-0003-0	RUBBER GUIDE	190*15*10(BI)	EA	1	4-4
2630-A00-0007-0	O-RING	P10	EA	2	4-8
7840-W00-0219-A	CONNECTOR WIRE	2P*190m/m(BI/BW)	EA	1	6-4
7840-W00-0417-0	CONNECTOR WIRE	SCK-02R*2P*170mm	EA	1	4-2
7840-W00-0323-A	CONNECTOR WIRE	SCK-07R*3P*230mm	EA	1	4-3
9025-A00-0034-1	STICKER	BI/BW, CASTON THA,THD	EA	1	3-8
9900-A00-0006-0	BATTERY RIBBON	NYLON(8m/m*15Cm)	EA	1	5-9

BODY ASS'Y 1 – LOW CAPACITY

CODE	ITEM	SPEC	UNIT	Q'TY	REMARK
1105-A00-0003-B	PLATFORM UPPER	BW-LOW,DBB-LOW	EA	1	2-2
1105-A00-0004-D	PLATFORM LOWER	BW-LOW,DBB-LOW	EA	1	1-1
1105-A00-0005-C	BRACKET-POST	BW-LOW,DBB-LOW	EA	1	1-2
1155-A00-0005-0	POST KNOB	ø49.4*37.5(BW)	EA	1	6-3
1205-A00-0001-B	POST PIPE	ø34.2*350(BW-LOW)	EA	1	6-2
1265-A00-0012-A	POST RING	ø34.4*ø40*12(BW)	EA	1	6-4
1501-MSU-0410-0	SCREW-MACHINE(FH)	M4*10-SUS	EA	3	6-7
1502-MSU-0308-0	SCREW-MACHINE(PH)	M3*8-SUS	EA	3	2-9
1502-MSU-0406-0	SCREW-MACHINE(PH)	M4*6-SUS	EA	3	2-8, 4-5
1502-MSU-0412-0	SCREW-MACHINE(PH)	M4*12-SUS	EA	4	5-4
1532-MSU-0612-0	BOLT-WRENCH(ST)	M6*12-SUS	EA	2	6-6
1532-MSU-0630-0	BOLT-WRENCH(ST)	M6*30-SUS	EA	4	4-3
1535-MSU-0615-0	BOLT-WRENCH(WA)	M6*15-SUS	EA	4	1-4
1535-MSU-0620-0	BOLT-WRENCH(WA)	M6*20-SUS	EA	4	2-7
1540-MSU-0400-0	NUT(HEX)	M4*0.7(SUS)	EA	1	6-8
1540-MSU-0600-0	NUT(HEX)	M6*0.8(SUS)	EA	4	4-6
1595-A00-0004-0	GROUND SPRING	ø17*ø6*9	EA	1	4-4
	CAPACITY STICKER	BW-LOW	EA	3	2-10
2005-A00-0016-0	CORD STOPPER	22.5*13.5(BW)	EA	1	2-4
2005-A00-0018-0	PLATFORM COVER	264*264*55(BW)	EA	1	5-2
2022-A00-0003-1	WATER LEVEL GAGE ASS'Y	ø18.9*22.8*12(BLACK)	EA	1	3-2
2605-A00-0005-0	PLATFORM RUBBER	BW-LOW(20*32*40)	EA	4	5-3
2605-A00-0006-0	RUBBER STOPPER	21*4.5*10(BI)	EA	1	2-5
2615-A00-0001-A	FOOT	SUS M8*25(BW-LOW)	EA	5	1-3
2625-A00-0002-0	BELLOWS	180*50(BW-LOW)	EA	1	4-2
7642-S00-0005-0	CABLE CLAMP	DA-4N	EA	2	2-6
7860-GND-0510-0	GROUND TERMINAL ASS'Y	510mm(BW)	EA	1	6-5

BODY ASS'Y 2 – HIGH CAPACITY

CODE	ITEM	SPEC	UNIT	Q'TY	REMARK
1000-A00-0004-0	DUST COVER	BW(HIGH),HOBART	EA	1	1
1005-A00-0008-0	BELLOS RING	ø161.8*2T	EA	1	2
1005-A00-0009-0	BELLOS RING	ø110*2T(BW-HIGH)	EA	1	3
1105-A00-0001-A	BRACKET-POST	BW-I(HIGH;TANAKA)	EA	1	4
1115-A00-0001-B	PLATFORM	BW-HIGH	EA	1	5
1115-A00-0002-0	BODY	BW-HIGH	EA	1	6
1155-A00-0005-0	POST KNOB	ø49.4*37.5(BW)	EA	1	7
1205-A00-0002-B	POST PIPE	ø34.2*560(BW-HIGH)	EA	1	8
1265-A00-0012-A	POST RING	ø34.4*ø40*12(BW)	EA	1	9
1501-MSU-0410-0	SCREW-MACHINE(FH)	M4*10-SUS	EA	7	10
1501-MSU-0416-0	SCREW-MACHINE(FH)	M4*16-SUS	EA	3	11
1502-MSU-0406-0	SCREW-MACHINE(PH)	M4*6-SUS	EA	1	12
1505-MSU-0408-0	SCREW-MACHINE(TH)	M4*0.7*8-SUS	EA	2	13
1505-MSU-0410-0	SCREW-MACHINE(TH)	M4*10-SUS	EA	7	14
1512-MSU-0312-0	SCREW-TAPPING(PH)-2	M3*12-SUS	EA	8	15
1520-MSU-0615-0	BOLT-HEXAGON	M6*1.0*15-SUS	EA	3	16
1523-MPC-0830-0	BOLT-HEXAGON(MHO)	M8*30-Cr	EA	8	17
1532-MSU-0830-0	BOLT-WRENCH(ST)	M8*30-SUS	EA	4	18
1540-MSU-0800-0	NUT(HEX)	M8*1.25 -SUS	EA	4	19
1551-MSU-0600-0	WASHER(SPR)	ø6-SUS	EA	3	20
1551-MSU-0800-0	WASHER(SPR)	ø8-SUS	EA	8	21
1590-A00-0019-0	GROUND SPRING	ø0.9*ø20*20(DOLPHIN)	EA	1	22
2000-A00-0056-0	L/C CASE	30*136*225.5(HIGH)	EA	1	23
2022-A00-0003-1	WATER LEVEL GAGE ASS'Y	ø18.9*22.8*12(BLACK)	EA	1	24
2600-A00-0001-0	WAIST BAND	15*16.3	M	1.8	25
2605-A00-0004-0	CASE GASKET	218*131*1T(BW-HIGH)	EA	1	26
2605-A00-0012-0	LIMIT GASKET	ø48.5*69*1.5T(BW-HI)	EA	1	27
2610-A00-0007-1	FOOT	M10.0*1.5*42(DOLPHIN)	EA	4	28
2625-A00-0003-0	BELLOWS	ø164*6(BW) HIGH	EA	1	29
2630-A00-0004-0	O-RING	P6(BW-HIGH)	EA	8	30
7642-S00-0005-0	CABLE CLAMP	DA-4N	EA	2	31
7860-GND-0510-0	GROUND TERMINAL ASS'Y	510mm(BW)	EA	1	32
9304-A00-0008-A	CUSHION-P.E	440*560*3T(DOLPHIN)	EA	1	33
1540-MSU-0400-0	NUT(HEX)	M4*0.7-SUS	EA	4	34
	LOAD CELL	BCS-TYPE(BW)	EA	1	35
	CAPACITY STICKER	BW-HIGH	EA	1	36

SET & C/T BOX ASS'Y 1 – LOW CAPACITY

CODE	ITEM	SPEC	UNIT	Q'TY	REMARK
1005-A00-0002-0	DUST COVER	280*280*35(BW-LOW)	EA	1	3-2
1035-A00-0030-A	HOUSING PLATE	95*70*23.5(BW,BN)	EA	1	1-4
1035-A00-0046-0	CONNECTOR HOLE COVER	35*14*1.0T(BI,BW)	EA	1	2-3
1090-A00-0013-0	L-WRENCH	ø3	EA	1	3-8-8
1265-A00-0001-0	BOLT-SEALING	M3*9(Including head 3mm)	EA	2	2-4
1512-A00-0310-0	SCREW-TAPPING(PH)-2	M3*10	EA	4	1-6
1595-A00-0013-0	LEVER SPRING	9.8*22(BW)	EA	1	1-5
2005-A00-0016-0	CORD STOPPER	22.5*13.5(BW)	EA	1	2-8
2005-A00-0017-0	HOUSING LEVER	94*15*13.5(ABS)	EA	1	1-3
2005-A00-0020-A	HOUSING	115*90*75(BW)	EA	1	1-1
2005-A00-0027-0	HOUSING POST	76*44*86(BW)	EA	1	1-2
2605-A00-0006-0	RUBBER STOPPER	21*4.5*10(BI)	EA	1	2-9
6830-F00-0530-0	CLAMP FILTER	ZCAT1325-0530A	EA	2	
7650-S00-0010-0	TIE BAND	100mm	EA	2	
7840-W00-0950-0	CONNECTOR WIRE	SCK-07P*D9P*500(BW)	EA	1	3-8-2
9100-BWL-0130-A	C/T BOX	646*440*330	EA	1	3-4
9206-AS0-0008-0	STYROFOAM BOX	BW(LOW-TYPE)	SET	1	3-5
9300-A00-0002-0	POLY BAG	90*150*0.05T	EA	1	3-8-7
9301-A00-0003-0	POLY BAG	170*250*0.05T(MANUAL)	EA	2	3-8-6
9303-A00-0004-A	POLY BAG	350*450*0.05T	EA	1	3-6
9304-A00-0005-B	POLY BAG	450*580*0.04T	EA	1	3-7
9400-A00-0046-0	SILICAGEL	10g	EA	2	3-9
9900-A00-0001-0	SEALING SOLDER	OVERSEA	EA	1	3-8-4
9900-A00-0002-0	SEALING WIRE	300M/ROLL	EA	0.002	3-8-5
	MANUAL	BW-SERIES	EA	1	3-8-1
	BATTERY	C-SIZE	EA	6	3-8-3
	ADAPTOR	110/220V12V/850mA	EA	1	3-3

SET & C/T BOX ASS'Y 2 – HIGH CAPACITY

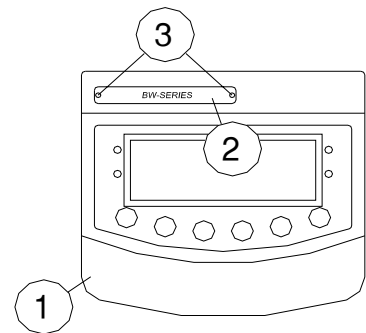
CODE	ITEM	SPEC	UNIT	Q'TY	REMARK
1035-A00-0030-A	HOUSING PLATE	95*70*23.5(BW,BN)	EA	1	1-4
1035-A00-0046-0	CONNECTOR HOLE COVER	35*14*1.0T(BI,BW)	EA	1	2-3
1090-A00-0013-0	L-WRENCH	ø3	EA	1	3-8-8
1265-A00-0001-0	BOLT-SEALING	M3*9(Including head 3mm)	EA	2	2-4
1512-A00-0310-0	SCREW-TAPPING(PH)-2	M3*10	EA	4	1-6
1595-A00-0013-0	LEVER SPRING	9.8*22(BW)	EA	1	1-5
2005-A00-0016-0	CORD STOPPER	22.5*13.5(BW)	EA	1	2-8
2005-A00-0017-0	HOUSING LEVER	94*15*13.5(ABS)	EA	1	1-3
2005-A00-0020-A	HOUSING	115*90*75(BW)	EA	1	1-1
2005-A00-0027-0	HOUSING POST	76*44*86(BW)	EA	1	1-2
2605-A00-0028-0	RUBBER STOPPER	21*5.5*10(BW)	EA	1	2-9
6830-F00-0530-0	CLAMP FILTER	ZCAT1325-0530A	EA	1	
6830-F00-0730-0	CLAMP FILTER	ZCAT1518-0730(BW-HIGH)	EA	1	
7650-S00-0010-0	TIE BAND	100mm	EA	2	
7840-W00-0950-0	CONNECTOR WIRE	SCK-07P*D9P*500(BW)	EA	1	3-8-2
9100-DB0-0W30-0	C/T BOX	760*525*345(DOLPHIN-W)	EA	1	3-4
9207-AS0-0004-A	STYROFOAM BOX	740*510*185(BW-H)UPPER	EA	1	3-5
9207-AS0-0007-0	STYROFOAM BOX	740*160*138 (BW-H)LOW	EA	1	3-5
9300-A00-0002-0	POLY BAG	90*150*0.05T	EA	1	3-8-7
9301-A00-0003-0	POLY BAG	170*250*0.05T(MANUAL)	EA	2	3-8-6
9303-A00-0004-A	POLY BAG	350*450*0.05T	EA	1	3-6
9305-A00-0002-B	POLY BAG	550*750*0.04T(SET,HD)	EA	1	3-7
9400-A00-0046-0	SILICAGEL	10g	EA	2	3-9
9900-A00-0001-0	SEALING SOLDER	OVERSEA	EA	1	3-8-4
9900-A00-0002-0	SEALING WIRE	300M/ROLL	EA	0.002	3-8-5
	MANUAL	BW-SERIES	EA	1	3-8-1
	BATTERY	C-SIZE	EA	6	3-8-3
	ADAPTOR	110/220V12V/850mA	EA	1	3-3

EXPLODED VIEW

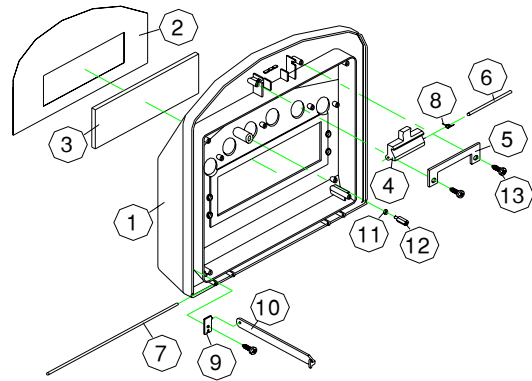
HEAD ASS'Y - COMMON

BW-1 HEAD ASSEMBLY

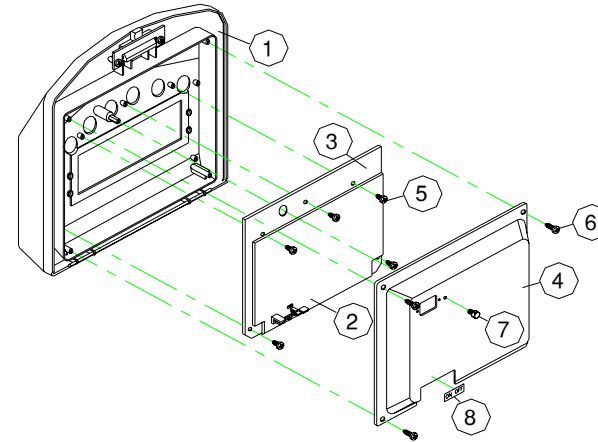
1



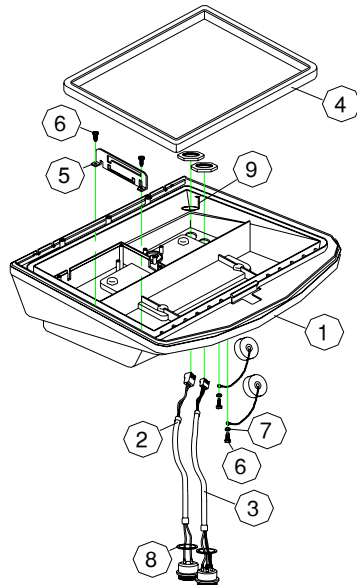
2



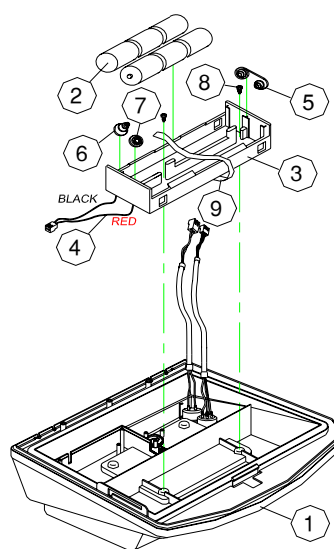
3



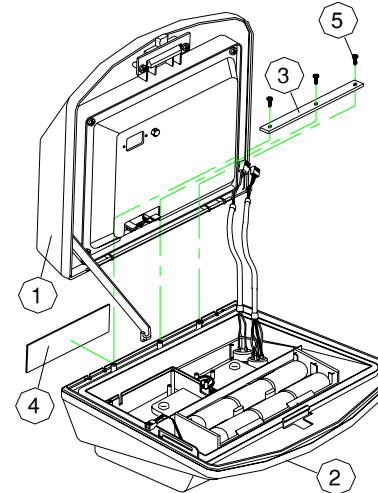
4



5



6

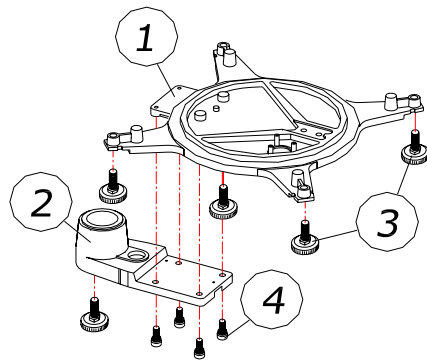


6-5	SCREW-TAPPING(PH)-2	M3*10	3	
6-4	SPEC PLATE	PW-STICKER TYPE	1	
6-3	SUPPORT PLATE	104*11*1.2T(BI)	1	
6 SET ASSEMBLING PART				
5-9	BATTERY RIBBON	NYLON(8m/m*15Cm)	1	
5-8	SCREW-TAPPING(PH)-2	M3*6	2	
5-7	BATTERY SPRING C	e1*20*21	1	
5-6	BATTERY SPRING B	e1*4*21	1	
5-5	BATTERY CONTACT A	e1*20*4*e20	1	
5-4	CONNECTOR WIRE	2P*190m/m	1	
5-3	BATTERY HOLDER	161*59*30	1	
5-2	BATTERY	C SIZE	6	
5 BATTERY HOLDER ASSEMBLING PART				
4-9	GROUND SPRING	e1*e17*15(BW)	1	
4-8	O-RING	P10	2	
4-7	WASHER(FLAT)	e3*e6*0.5-SUS	2	
4-6	SCREW-TAPPING(PH)-2	M3*10	4	
4-5	BAR GUIDE BRACKET	72*29.4*7.5*1.5T(BI)	1	
4-4	RUBBER GUIDE	190*125*10(BI)	1	
4-3	CONNECTOR WIRE	SCK-07R*3P*230mm	1	
4-2	CONNECTOR WIRE	SCK-02R*2P*170mm	1	
4-1	BODY	205*220*55(ABS)BI	1	
4 BODY SUB ASSEMBLING PART				
3-8	STICKER	BI/BW, CASTON THA,THD	1	
3-7	BOLT-SEALING	M3*9(Including head 3mm)	1	
3-6	SCREW-TAPPING(PH)-2	M3*10	3	
3-5	SCREW-TAPPING(PH)-2	M3*6	5	
3-4	PCB PLATE	180*150*0.8(BI)	1	
3-3	DISPLAY PCB ASS'Y	6110-PBW-1040-C	1	
3-2	MAIN PCB ASS'Y	6100-PBW-1040-D	1	
3 PCB ASS'Y & PCB PLATE ASSEMBLING PART				
2-13	SCREW-TAPPING(PH)-2	M3*10	3	
2-12	BOLT-CONNECTOR	M3*13(H)*10(D)	1	
2-11	WASHER(SPR)	e3	1	
2-10	SUPPORT BAR PLATE	105*10*5*1.6T	1	
2-9	BAR GUIDE PLATE	19*9*1.2T(BI)	1	
2-8	KNOB SPRING	1*3.5*3/4(BI)	1	
2-7	SHAFT A	ø2.8*166(BI)	1	
2-6	SHAFT B	ø2.8*50(BI)	1	
2-5	LEVER GUIDE PLATE	67*21*12T(BI)	1	
2-4	DOOR KNOB	40*33*12(BI)	1	
2-3	DISPLAY COVER	153.6*60*2T	1	
2-2	KEY BOARD PAD	BI,BW-SERIES	1	
2 FRONT COVER SUB ASSEMBLING PART - 2				
1-3	TWIST RIVET	ø2.6*6	2	
1-2	CAPACITY PLATE	BW-SERIES	1	
1-1	FRONT COVER	205*220*32(ABS)BI	1	
1 FRONT COVER SUB ASSEMBLING PART - 1				
NO	PARTS NAME	SPECIFICATION	Q'TY	REMARK
TOLERANCES UNLESS OTHERWISE SPECIFIED				
EXPLODED_VIEW				
CAS CORPORATION				
#19 KANAP-RI KWANGJOK-MYON				
YANGJU-KUN KYUNGKI-DO,KOREA				
FIRST USED IN ASSEMBLY BW_SERIES				
MATERIAL				
END FINISH				
DIMS NOT SCALE DRAWING DIMENSIONS ARE IN MM UNLESS OTHERWISE SPECIFIED				
SCALE DRAWING PART NO. REV				
N/A EXPLODED_VIEW_HEAD -				
CAS FORM A1 (594mmx841mm)				

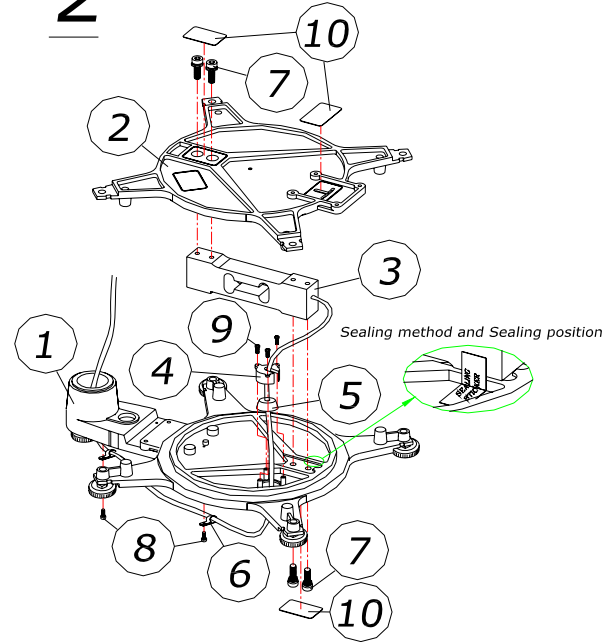
BODY ASS'Y – LOW CAPACITY

BW-1(LOW) BODY ASSEMBLY

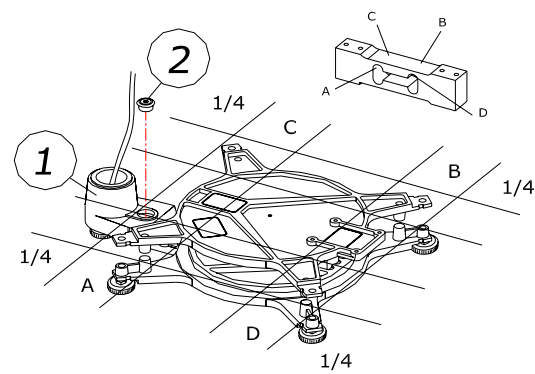
1



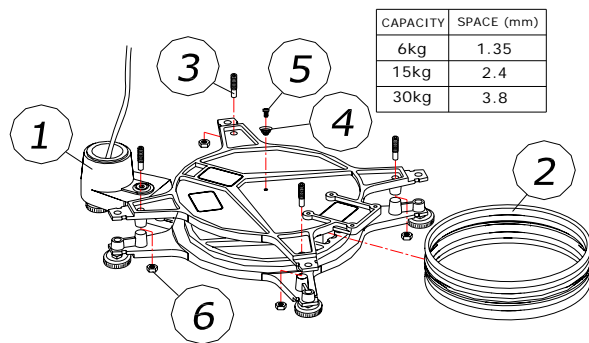
2



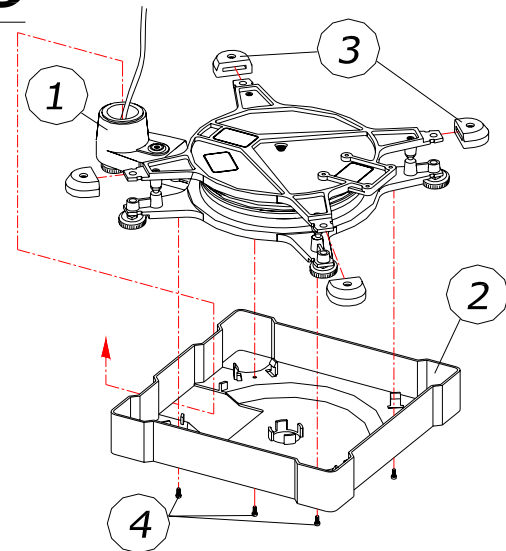
3



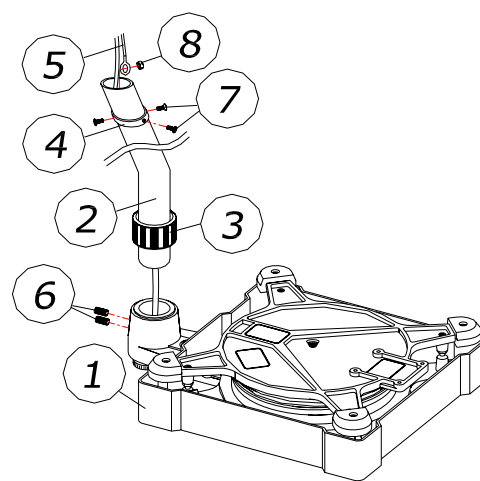
4



5



6

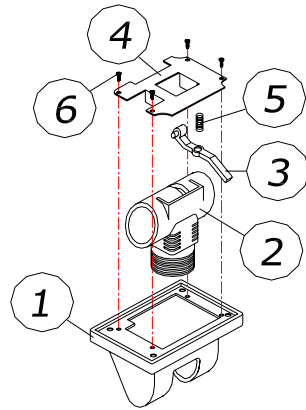


6-8	NUT(HEX)	M4*0.7-SUS	1	
6-7	SCREW-MACHINE(FH)	M4*10-SUS	3	
6-6	BOLT-WRENCH(ST)	M6*12-SUS	2	
6-5	GROUND TERMINAL ASS'Y	510mm(BW)	1	
6-4	POST RING	ø34.4*ø40*12(BW)	1	
6-3	POST KNOB	ø49.4*37.5(BW)	1	
6-2	POST PIPE	ø34.2*350(BW-LOW)	1	
6	POST PIPE ASSEMBLING PART			
5-4	SCREW-MACHINE(PH)	M4*12-SUS	4	
5-3	PLATFORM RUBBER	BW-LOW(20*32*40)	4	
5-2	PLATFORM COVER	264*264*55(BW)	1	
5	PLATFORM COVER ASSEMBLING PART			
4-6	NUT(HEX)	M6*0.8(SUS)	4	
4-5	SCREW-MACHINE(PH)	M4*6-SUS	1	
4-4	GROUND SPRING	ø17*ø6*9	1	
4-3	BOLT-WRENCH(ST)	M6*30-SUS	4	
4-2	BELLOWS	180*50(BW-LOW)	1	
4	LIMIT ADJUST PART			
3-2	WATER LEVEL GAGE	ø18.9*22.8*12(BLACK)	1	
3	ECCENTRIC ADJUST PART			
2-10	CAPACITY STICKER	BW-LOW	3	
2-9	SCREW-MACHINE(PH)	M3*8-SUS	3	
2-8	SCREW-MACHINE(PH)	M4*6-SUS	2	
2-7	BOLT-WRENCH(WA)	M6*20-SUS	4	
2-6	CABLE CLAMP	DA-4N	2	
2-5	RUBBER STOPPER	21*4.5*10	1	
2-4	CORD STOPPER	22.5*13.5	1	
2-3	LOADCELL	BCS TYPE	1	
2-2	PLATFORM UPPER	BW-LOW	1	
2	LOADCELL ASSEMBLING PART			
1-4	BOLT-WRENCH(WA)	M6*15-SUS	4	
1-3	FOOT	SUS M8*25(BW-LOW)	4	
1-2	BRACKET-POST	BW-LOW	1	
1-1	PLATFORM LOWER	BW-LOW	1	
1	POST BRACKET ASSEMBLING PART			
NO	PARTS NAME	SPECIFICATION	Q'TY	REMARK
TOLERANCES UNLESS OTHERWISE SPECIFIED				
NAME OR TITLE				
EXPLOED_VIEW				
CAS CORPORATION #19 KANAP-RI KWANGJUK-MYON YANGJU-KUN KYUNGI-DO, KOREA				
ANGULAR ±	FIRST USED IN ASSEMBLY		BW_SERIES	MATERIAL
DECIMAL ±	FIRST MADE FOR		LOW_CAPACITY	END FINISH
Ø	CONTRACT OR CUSTOMER NO		WORLD_WIDE	DO NOT SCALE DRAWING DIMENSIONS ARE IN BRANCH
DRAWN	CHECKED	CHECKED	APPROVED	SCALE DRAWING PART NO. REV
-	-	-	-	N/A EXPLOED_VIEW_BODY -
.20	.20	.20	.20	
CAS FORM A1 (594mmx841mm)				

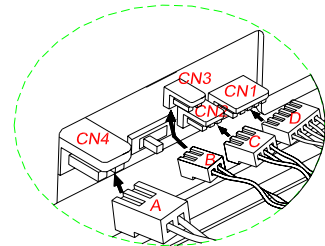
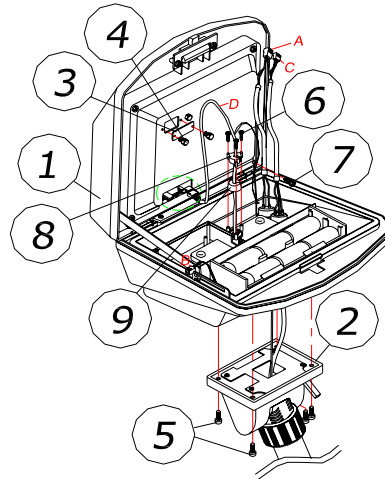
SET & C/T BOX ASS'Y – LOW CAPACITY

BW-1(LOW) SET & C/T BOX ASSEMBLY

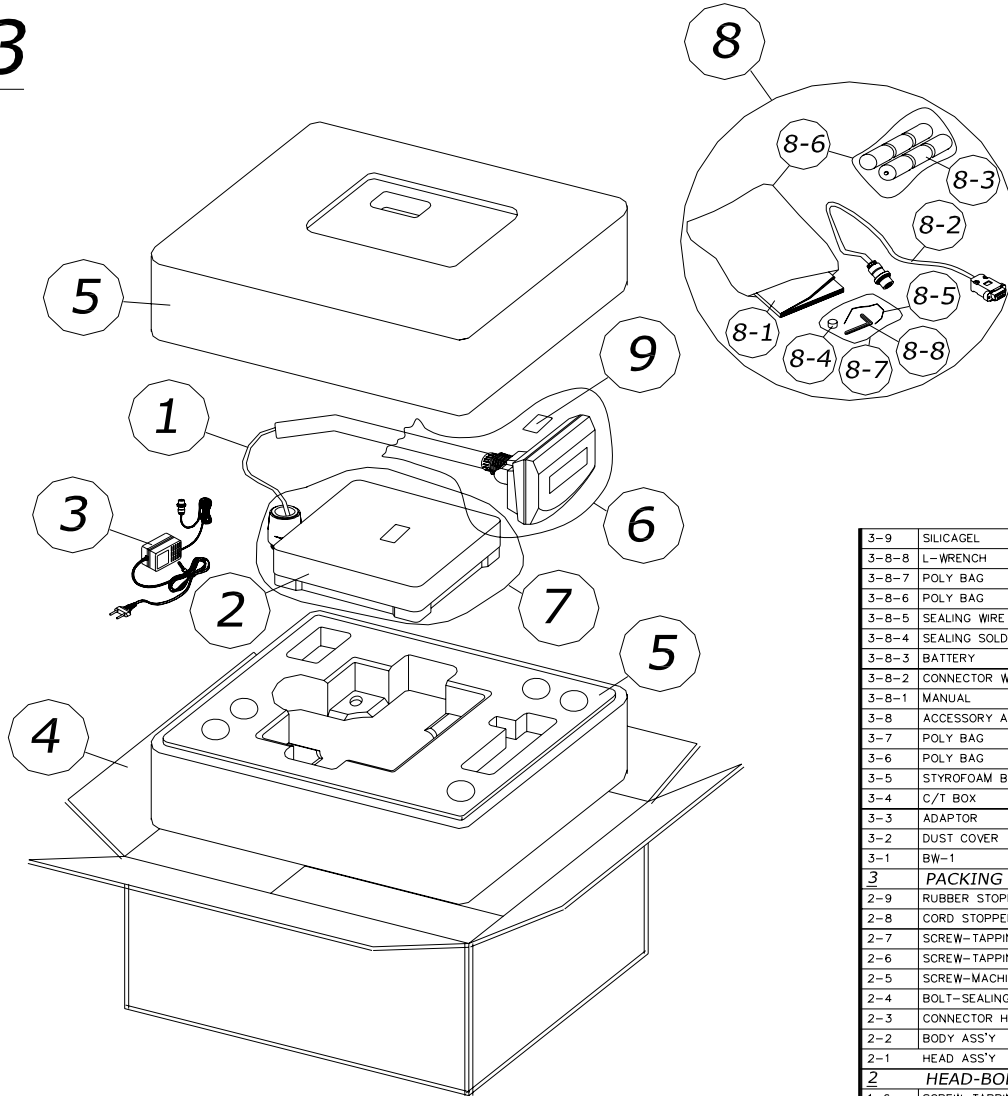
1



2



3



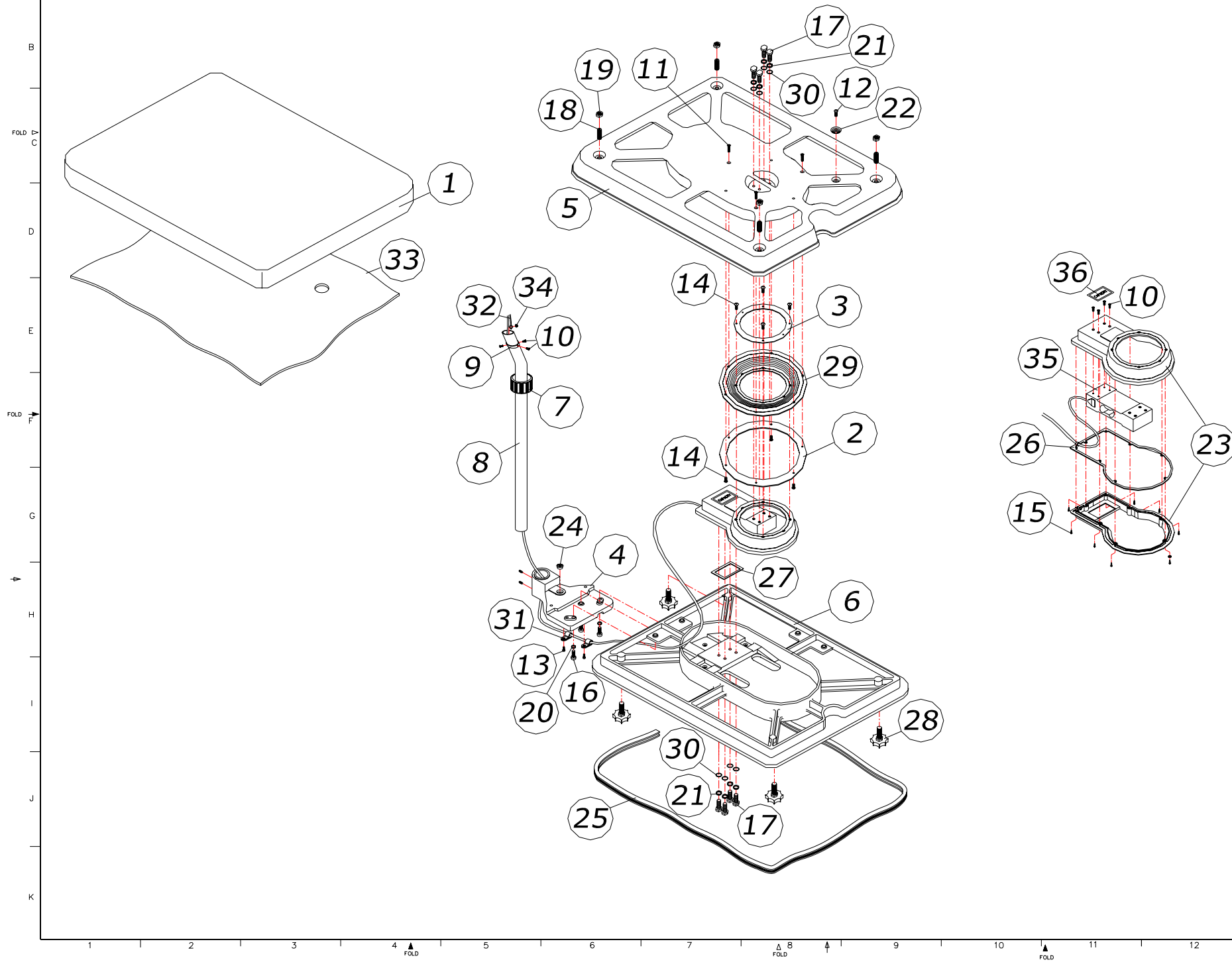
3-9	SILICAGEL	10g	4	
3-8-8	L-WRENCH	ø3	1	
3-8-7	POLY BAG	90*150*0.05T	2	
3-8-6	POLY BAG	170*250*0.05T(MANUAL)	4	
3-8-5	SEALING WIRE	300M/ROLL	1	
3-8-4	SEALING SOLDER	OVERSEA	1	
3-8-3	BATTERY	C SIZE	1	
3-8-2	CONNECTOR WIRE	SCK-07P*D9P*500(BW)	1	
3-8-1	MANUAL	BW-SERIES	1	
3-8	ACCESSORY ASS'Y	BW-SERIES	1	
3-7	POLY BAG	450*580*0.04T	1	
3-6	POLY BAG	350*450*0.05T	4	
3-5	STYROFOAM BOX	BW(LOW-TYPE)	5	
3-4	C/T BOX	646*440*330	1	
3-3	ADAPTOR	110/220V12V/850mA	1	
3-2	DUST COVER	280*280*35(BW-LOW)	1	
3-1	BW-1	LOW CAPACITY	3	
3 PACKING PART				
2-9	RUBBER STOPPER	21*4.5*10(BI)	1	
2-8	CORD STOPPER	22.5*13.5(BW)	1	
2-7	SCREW-TAPPING(PH)-2	M3*10	1	
2-6	SCREW-TAPPING(PH)-2	M3*12	3	
2-5	SCREW-MACHINE(PH)	M4*10-SUS	4	
2-4	BOLT-SEALING	M3*9(including head 3mm)	2	
2-3	CONNECTOR HOLE COVER	35*14*1.0T(BI,BW)	1	
2-2	BODY ASS'Y	BW-1(LOW)	1	
2-1	HEAD ASS'Y	BW-1(LOW)	1	
2 HEAD-BODY ASSEMBLING PART				
1-6	SCREW-TAPPING(PH)-2	M3*10	4	
1-5	LEVER SPRING	9.8*22(BW)	1	
1-4	HOUSING PLATE	95*70*23.5	1	
1-3	HOUSING LEVER	94*15*13.5(ABS)	1	
1-2	HOUSING POST	76*44*86(BW)	1	
1-1	HOUSING	115*90*75(BW)	1	
1 TILT BRACKET ASSEMBLING PART				
NO	PARTS NAME	SPECIFICATION	Q'TY	REMARK

TOLERANCES UNLESS OTHERWISE SPECIFIED		NAME OR TITLE		CAS CORPORATION	
ANGULAR ±		EXPLODED VIEW		#19 WANGJI-RI WANGJOK-MYON YANGJU-KUN KYUNGI-DO, KOREA	
DECIMAL ±		FIRST USED IN ASSEMBLY	BW_SERIES	MATERIAL	
Ø	0.01/0.02	FIRST MADE FOR	LOW_CAPACITY	END FINISH	
		CONTRACT OR CUSTOMER NO	WORLD_WIDE	DO NOT SCALE DRAWING DIMENSIONS ARE IN INCH	
DRAWN	CHECKED	CHECKED	APPROVED	SCALE	DRAWING PART NO. REV
-	-	-	-	N/A	EXPLODED_VIEW_SET -
.20	.20	.20	.20		

CAS FORM A1 (594mmx841mm)

BODY ASS'Y – HIGH CAPACITY

BW-1(HIGH) BODY ASSEMBLY



NO	PARTS NAME	SPECIFICATION	Q'TY	REMARK
36	CAPACITY STICKER	BW-HIGH	1	
35	LOAD CELL	BCS-TYPE(BW)	1	
34	NUT(HEX)	M4*0.7-SUS	1	
33	CUSHION-P.E	440*560*3T(DOLPHIN)	1	
32	GROUND TERMINAL ASS'Y	510mm(BW)	4	
31	CABLE CLAMP	DA-4N	2	
30	O-RING	P6(BW-HIGH)	8	
29	BELLOWS	ø164*6(BW) HIGH	1	
28	FOOT	M10.0*1.5*42(DOLPHIN)	4	
27	LIMIT GASKET	ø48.5*69*1.5T(BW-HI)	1	
26	CASE GASKET	218*131*1T(BW-HIGH)	1	
25	WAIST BAND	15*16.3	1.8	
24	WATER LEVEL GAGE	ø18.9*22.8*12(BLACK)	1	
23	L/C CASE	30*136*225.5(HIGH)	1	
22	GROUND SPRING	ø0.9*ø20*20(DOLPHIN)	1	
21	WASHER(SPR)	ø8-SUS	8	
20	WASHER(SPR)	ø6-SUS	3	
19	NUT(HEX)	M8*1.25-SUS	4	
18	BOLT-WRENCH(ST)	M8*30-SUS	4	
17	BOLT-HEXAGON(MHO)	M8*30-Cr ₂	8	
16	BOLT-HEXAGON	M6*1.0*15-SUS	3	
15	SCREW-TAPPING(PH)-2	M3*12-SUS	8	
14	SCREW-MACHINE(TH)	M4*10-SUS	7	
13	SCREW-MACHINE(TH)	M4*0.7*8-SUS	2	
12	SCREW-MACHINE(PH)	M4*6-SUS	1	
11	SCREW-MACHINE(FH)	M4*16-SUS	3	
10	SCREW-MACHINE(FH)	M4*10-SUS	7	
9	POST RING	ø34.4*ø40*12(BW)	1	
8	POST PIPE	ø34.2*560(BW-HIGH)	1	
7	POST KNOB	ø49.4*37.5(BW)	1	
6	BODY	BW-HIGH	1	
5	PLATFORM	BW-HIGH	1	
4	BRACKET-POST	BW-(HIGH; TANAKA)	1	
3	BELLOWS RING	ø110*2T(BW-HIGH)	1	
2	BELLOWS RING	ø161.8*2T	1	
1	DUST COVER	BW(HIGH),HOBART	1	

TOLERANCES UNLESS OTHERWISE SPECIFIED		NAME OR TITLE		CAS CORPORATION	
ANGULAR ±		EXPLODED VIEW		#19 KANAP-RI KWANGJEOK-MYON YANGJU-KUN KYUNGKI-DO, KOREA	
DECIMAL ±		FIRST USED IN ASSEMBLY	BW SERIES	MATERIAL	
Ø	1/21/2K1	FIRST MADE FOR	HIGH CAPACITY	END FINISH	
		CONTRACT OR CUSTOMER NO	WORLD WIDE	DO NOT SCALE DRAWING	DIMENSIONS ARE IN INCH
DRAWN	CHECKED	CHECKED	APPROVED	SCALE	DRAWING PART NO. REV
-	-	-	-	N/A	EXPLODED VIEW BODY -
.20	.20	.20	.20		

CAS FORM A1 (594mmx841mm)

ERROR MESSAGE & TROUBLE SHOOTING

Errors in weighing mode

Err 01

Cause

The indicator can't be initialized due to platform shaking.

Management

Put the platform on a flat place without shaking and power on.

Err 02

Cause

The loadcell is connected wrongly or A/D conversion part has a fault.

Management

Check that the loadcell is well connected with main unit.

Err 03

Cause

The calibration isn't executed or the data of internal memory is lost due to a electrical shock.

Management

Perform the required specification again in setting mode.

Err 09

Cause

The current weight exceeds zero range.

Err 10

Cause

The specified TARE weight exceeds the maximum capacity.

Management

Set the TARE weight lower than max. capacity.

Or set the maximum capacity higher than the desired TARE weight in calibration menu. and perform the calibration again.

Err 13

Cause

The initial zero range exceeds above 10% of maximum capacity.

Management

Check the loadcell state.

Over

Cause

Too heavy object is put on platform so that it may exceed the maximum capacity.

Management

Never put the weight exceeding the maximum capacity

If the loadcell is damaged, replace the loadcell.

Errors in count mode

Err 61

Cause

The count unit weight and sample weight are set too high.

Management

Set the count unit weight low or the sample quantity high.

Err 62

Cause

The count unit weight and sample weight are set too low.

Management

Set the count unit weight high or the count sample quantity low.