



Sim Racing Machines Emulator V5 instructions.

Your emulator's primary function is to make the Fanatec wheel base think that a Fanatec Formula wheel is attached and therefore enable force feedback. You do not need to use any of the connections other than the attaching the emulator to the wheel base with a Fanatec quick release.

Expanding functionality

The V5 version of the emulator allows you to add various buttons and a hat switch using the plugs on the PCB.

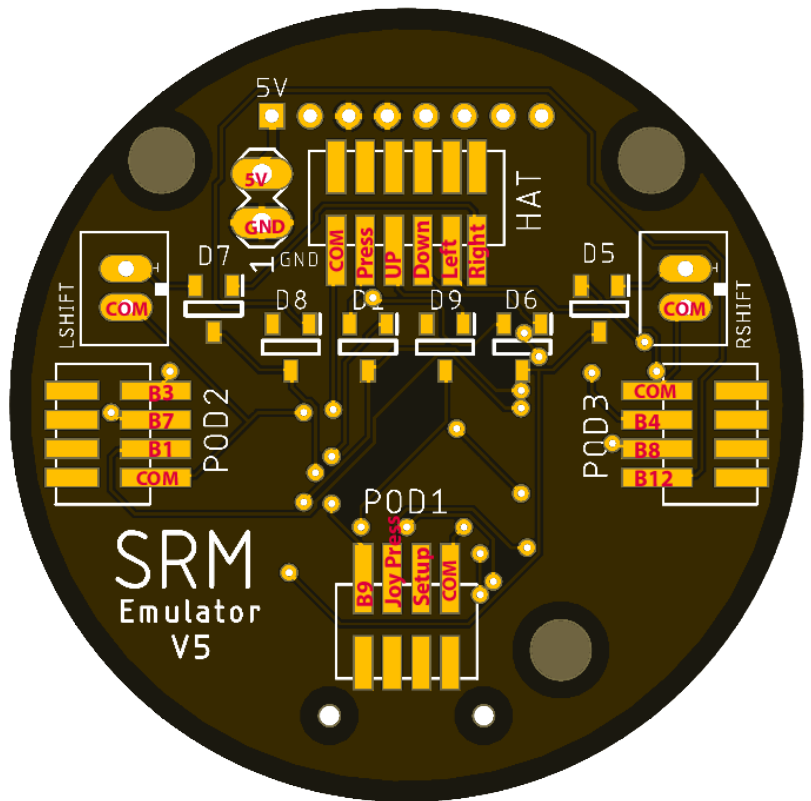
There are 3 button pods. You can either attach one of Fanatec's Universal Hub clusters to each of these or wire direct to your own buttons.

Plugs are provided for left and right shifters as well. These use the same plug as Fanatec use on the Formula Carbon wheel. JST PH 2 pin.

The Hat switch plug is custom configuration so you either need to purchase our hat switch add on or wire your own. The Fanatec wheels require that the Press is also activated when a direction is pressed.

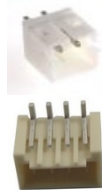
For anyone wanting the power their own board we have added a header for GND and 5v which you can solder to.

You cannot attach COM to a common ground, each COM is separate.



Hardware

- Shifter plugs are JST PH 2.0 2 pin
- Pods use a 4 pin Molex Pico-SPOX
- Hat uses a 6 pin Molex Pico-SPOX



We sell a simple button plate to allow adding 2 buttons and a Hat switch.

Together with a hat switch, button cable and shifters.

