

 baed stories

scenario for an erotic
ROLE-PLAYING GAME

WITH SENSUAL NURSE OUTFIT



Experience "The Diagnosis of Lust: A Sensual Medical Adventure," a captivating role-playing game where you embody a Nurse and a Patient, exploring a world where desire and seduction intertwine in a medical setting. Indulge in forbidden passions as the Nurse's alluring touch ignites hidden desires, blurring the line between professionalism and intimacy. Unleash your fantasies, engage in electrifying role play, and delve into the captivating world of sensual medicine.

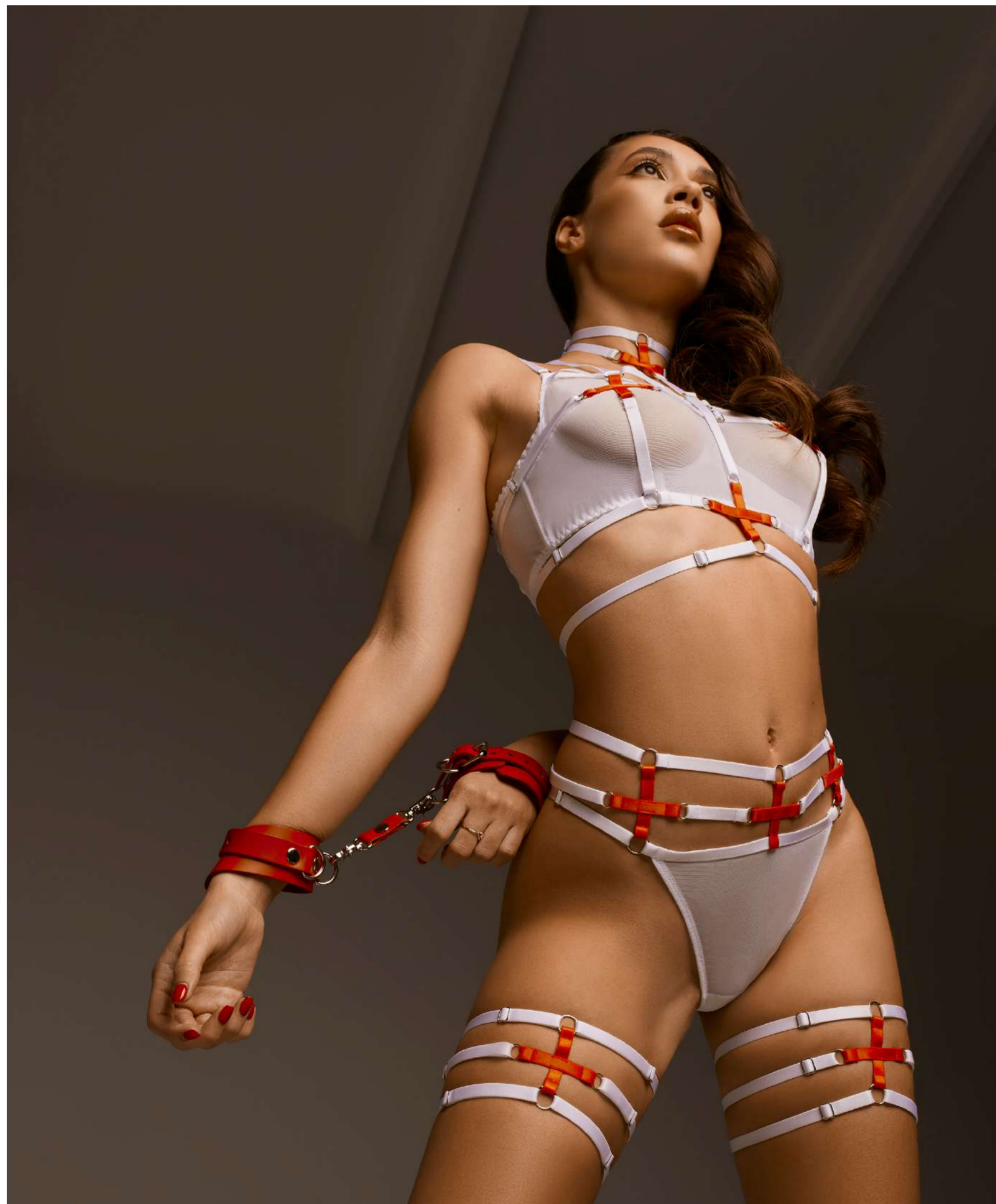
SETTING:

The game is set in a room that is furnished with a table, a chair, and either a sofa or a bed. Creating a tranquil and immersive gaming experience relies on establishing a serene and comfortable atmosphere where everyone can relax and feel at ease. You can achieve this by adjusting the lighting and temperature in the room.

CHARACTERS:

Nurse: She is dressed in a captivating set from baed stories, and she skillfully strikes a balance between genuine care and firm control over the situation. Her gentle nature and professionalism command respect and pique the patients' interest, leaving our hero eager to know her better.

Patient: A resilient, bold, and self-reliant man who is accustomed to taking charge and being in control of all aspects of his life, except when it comes to interacting with the nurse. He will need to learn how to heed her persistent commands, and the nurse's allure and charm will serve as his motivation.



scene 1:

HOSPITAL *encounter*



Noticing the patient's nervousness, the nurse tenderly reaches out and touches his hand to offer comfort and share her calming feminine energy. She asks the patient about his symptoms and specific details to pay attention to. In response, he shares his concerns: working long hours and devoting considerable attention to sports and self-care have left him feeling accumulated muscle fatigue. Seeking a professional massage and an analysis of his condition, the patient finds solace in the nurse's offer of assistance. As they engage in conversation, they maintain visual contact and gradually become aware of their mutual attraction, captivated by each other's allure.



scene 2:

EXAMINATION

In response to the patient's request, the nurse deliberately dons gloves while maintaining unbroken eye contact. During the examination, she employs gentle touches, using her fingertips or flogger to lightly caress the patient's skin and subtly glide over his clothing, creating a sensual tension and establishing an atmosphere that is both gentle and arousing. Throughout the examination, the nurse leans in closer, allowing her breath to delicately graze the patient's skin, igniting a sense of desire through their closeness and progressively erasing both physical and emotional barriers between them.

Through lighthearted conversation and subtle innuendos, the nurse cultivates a flirtatious ambiance, heightening the sexual tension between them. She needs to measure the patient's temperature but momentarily cannot locate the thermometer. Seizing the opportunity, she positions herself on his lap, face to face, and gently presses her lips against his forehead. Following this gesture, she may then write him a prescription, inscribing her most intimate desires on a sheet of paper for him to peruse.

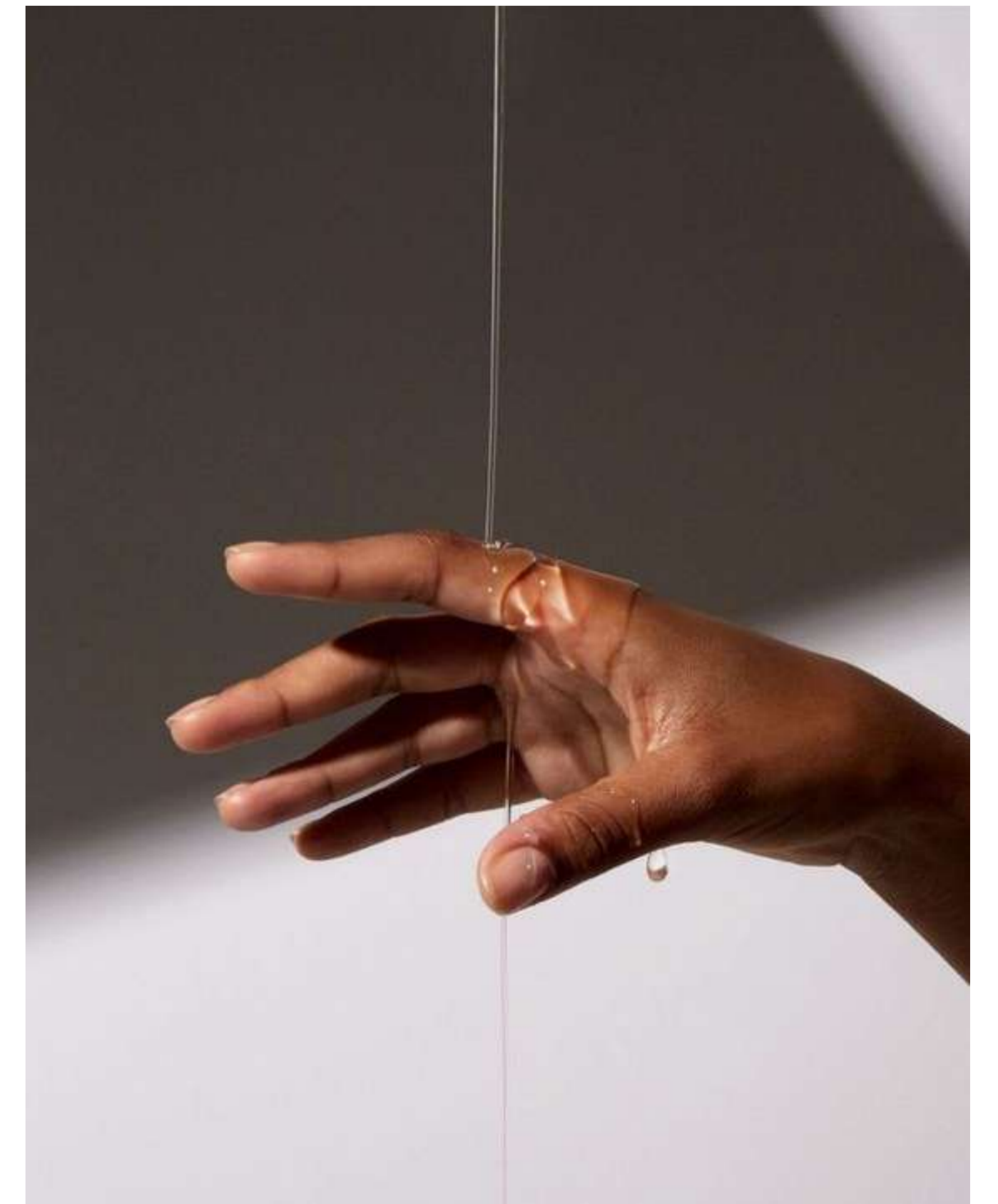


scene 3:

MASSAGE

Following the initial examination, the nurse gently places the patient in a comfortable position and proceeds to administer a soothing and sensual full-body massage. With skilled hands, she explores the patient's body with a gentle and fluid touch, focusing on promoting relaxation and satisfaction.

The nurse gradually undresses the patient, aiming to enhance the effectiveness of the massage and concentrate on specific areas of tension. Her tactile gestures are strategically placed, stimulating erogenous zones and evoking heightened pleasure and desire between them. At this stage, the interaction remains within the realm of professional care, with the nurse maintaining her professional boundaries. The patient willingly and eagerly embraces her actions, while secretly hoping for a deeper connection to unfold.





scene 4:

mutual EXPLORATION

In this scene, the nurse and patient engage in a mutual exploration of their desires and boundaries through tantalizing touches and verbal exchange. As a first step, the nurse playfully suggests that the man take a dose of medication directly from her body. It could take the form of whipped cream, edible lubricant, or a natural aphrodisiac delicately applied to the inner side of her thigh.

As the nurse admires the alluring contours of the patient's body, she can't help but express her genuine interest and the underlying sexual tension. Gradually, she begins to undress herself in a deliberate, slow, and sensual manner, captivating the patient's attention with each movement. The characters embark on a physical exploration of each other's bodies, gradually unraveling their deepest desires.

It is essential to emphasize that consent, open communication, and the comfort of all involved parties should always be the primary focus in any relationship. The erotic actions depicted in each scene are intended to create anticipation, ignite desire, and sustain a sensuous atmosphere. The characters are free to adapt or transform these actions according to their personal fantasies.

The end of the role-playing game, but the beginning of new possibilities and deeper understanding of each other in a world of passion and discoveries.

MAKE YOUR WILDEST DREAMS COME TRUE with bæd stories!