



ROCKY MOUNTAIN RAFTS FRAME ASSEMBLY GUIDE

rockymountainrafts.com

Frame Parts

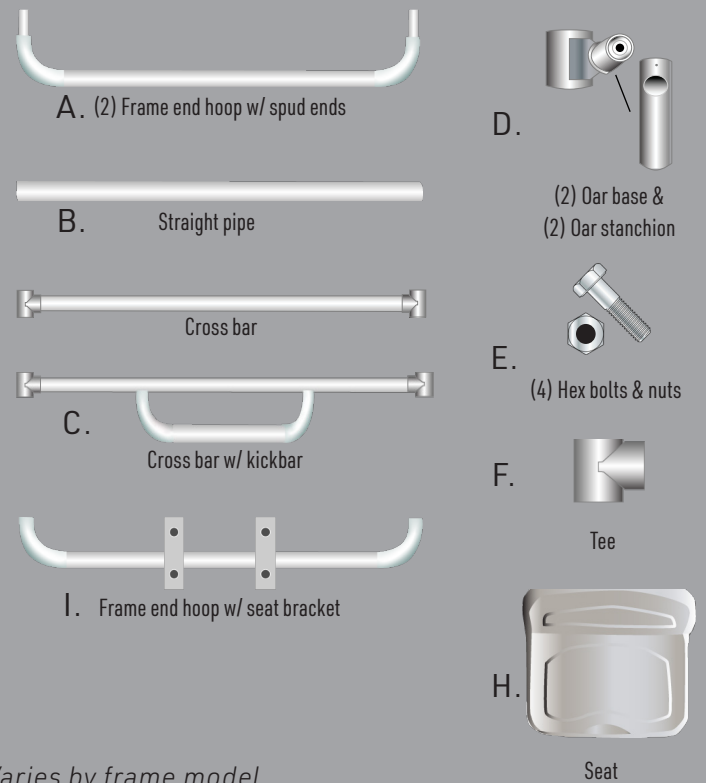
- A. (2) Frame end hoop
- B. (2) Straight pipe
- C. (*) Cross bar and cross bar with kickbar
- D. (2) Oar base
(2) Oar stanchion
- E. (4) Hex bolts with lock nuts
- F. (*) Tees
- G. Seat (not all models)
- H. Seat bolt and washer set (models with seats)
- I. Seat bracket (models with seats)

Recommended Tools

- ▶ 1/2" Wrenches or sockets
- ▶ Rubber mallet
- ▶ 3/16" Allen wrench (provided)

Pro Tip: Take your allen wrench on your first trip to make adjustments.

Layout all pieces on an even, flat surface before assembly.



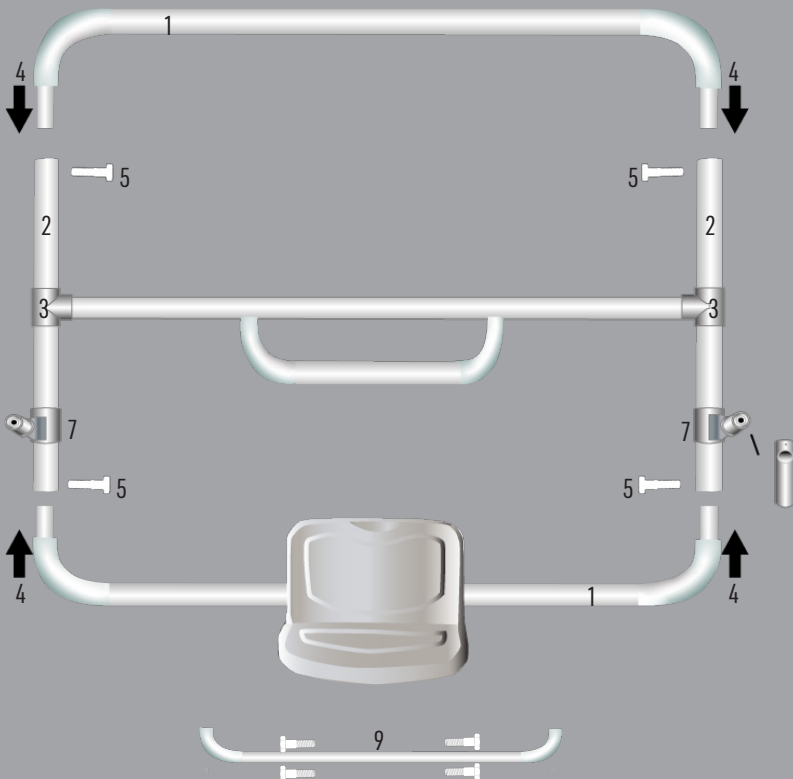
*Varies by frame model

Frame Assembly

1. Place frame end hoops opposite each other.
2. Place straight pipes parallel to each other.
3. Insert cross bars into tees. This will approximate the straight pipes for connecting the end hoops. Do not tighten set screws until final assembly.
4. Slide one end hoop into straight pipes. Please note the stamped numbers by the pre-drilled holes in straight pipes and spud ends. Match numbers for accuracy.
5. Install hex bolts and nylon insert lock nuts. Repeat on second end hoop. When assembling second end hoop, do so evenly.
6. Tighten all frame bolts.
7. Install oar stanchions in oar base. Oar stanchions should not extend past oar bases, to prevent damage to raft. Oar tower stanchions can be reversed to suit your preference.
8. Adjust kickbar, oar bases, and oar stanchions and firmly tighten all set screws and hex bolts.

If you have a seat:

9. Place seat over seat bracket and align bracket holes with seat holes.
10. Attach with seat bolt lock washer set. Begin threading bolts by hand; tighten with wrench. They should thread easily with no resistance.



Do not cross thread or over tighten seat bolts.