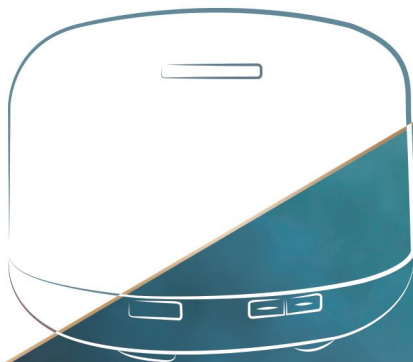


Quick Start Guide

Premium Essential Oil Diffuser

For Tuya App
Echo & Google Home



FOR A BETTER LIFE

Accessories

This manual book applies to all same model diffusers with different colors.



Pure White



White Wood



Light Wood



Cherry Wood



Dark Wood



Diffuser * 1



User Guide *1



AC Power Adapter *1



Measuring Cup *1



Notice:

AC power adapter and measuring cup are included in the water tank.

Operation Guide

Connecting Preparation

1. Bring your diffuser near the Wi-Fi router, prepare the Wi-Fi name and password as well as an email address (will enter in later), add water in the tank.



2. For first use, please connect the device to power supply directly; For used device, please unplug and reconnect before pairing.



3. Download Tuya Smart from App Store (IOS System) or Google Play (Android System)

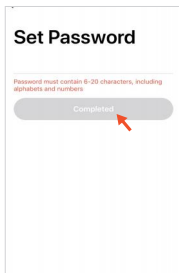
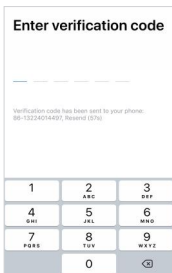
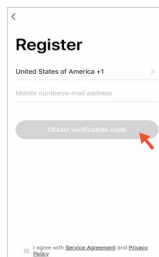
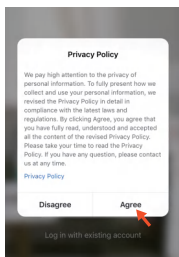
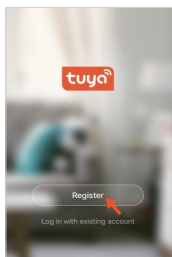


TuyaSmart

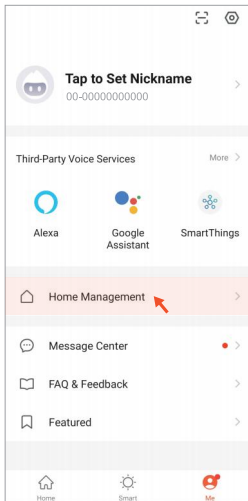


Register and log in TuyaSmart

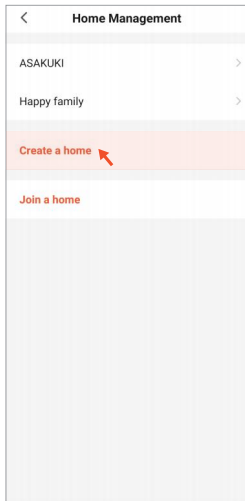
Please register via phone number or email, password must contain 6-20 characters, including letters and numbers.



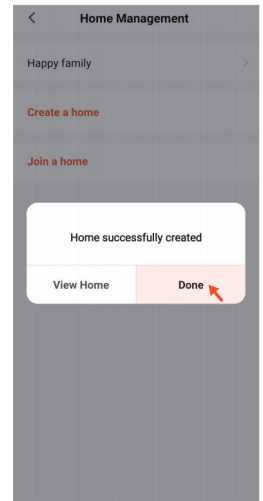
Home Management



Create a home

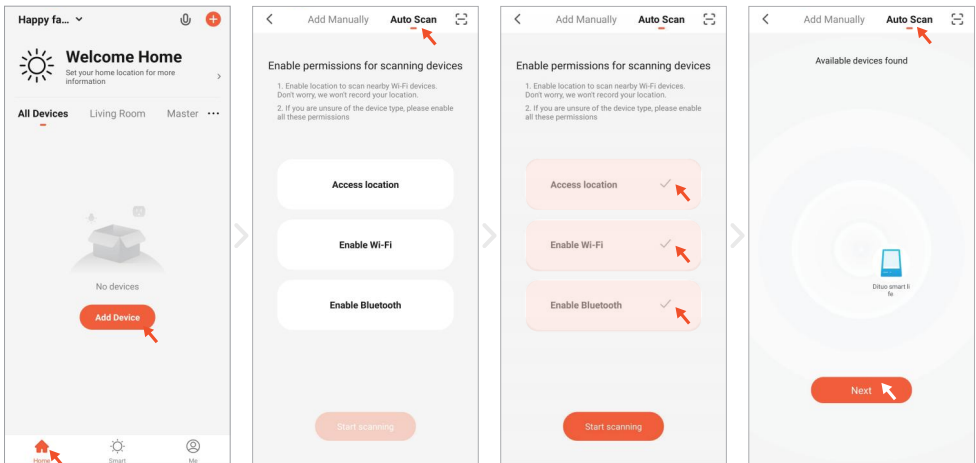


Done




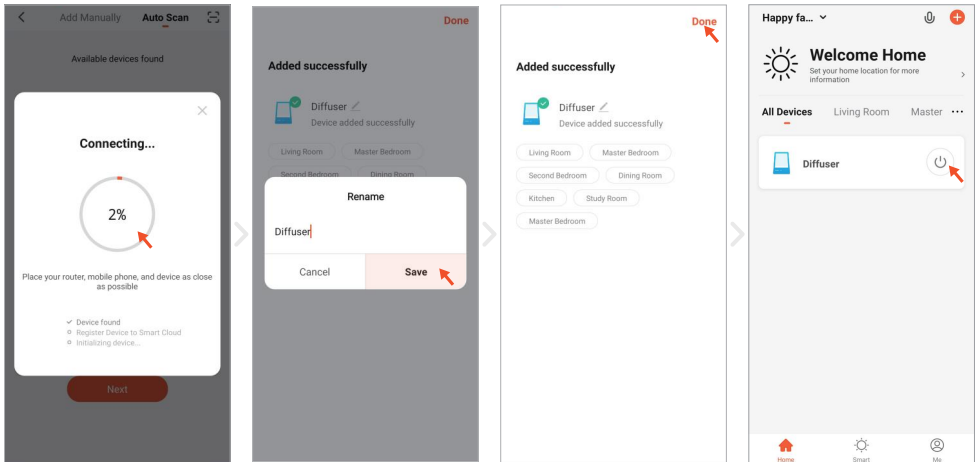
Connection Mode 1: Bluetooth Connection (Recommended)

Add Device → Choose auto scan mode → Enable permissions(Enable location, Wi-Fi and Bluetooth for scanning devices)and start scanning → After finding the device, click 'Next'



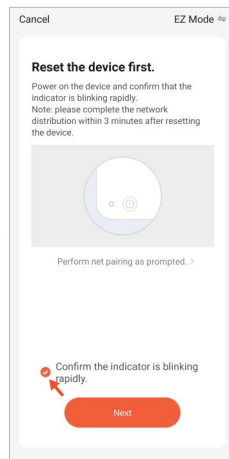
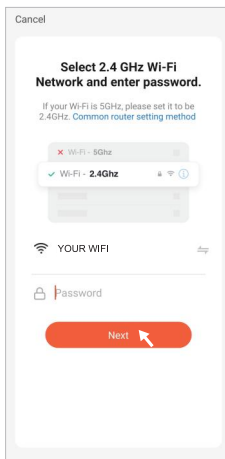
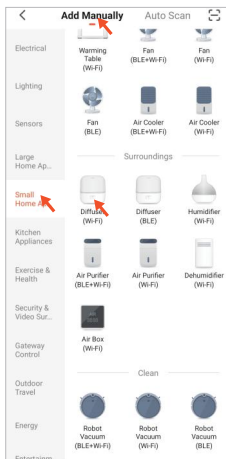
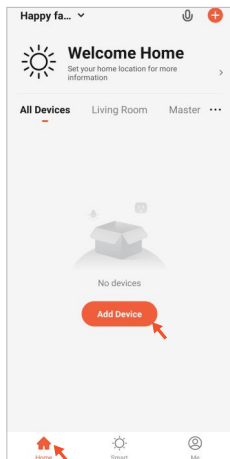
Connecting(Wait till the circle 100%) → Rename(Name your device) → Done.
Now you can control it via APP.

If this is the second time to use, please directly click the button  to start the device.



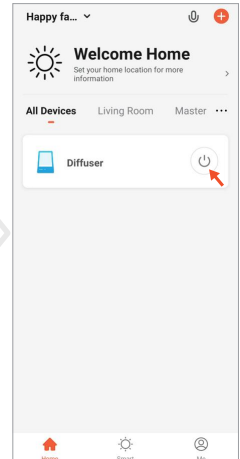
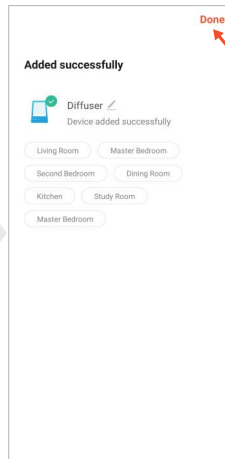
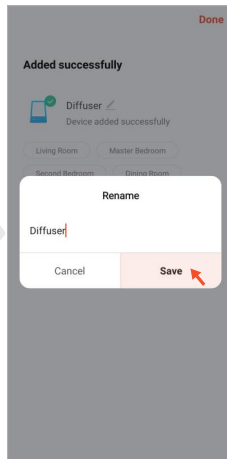
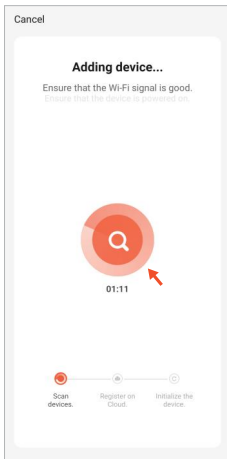
Connection Mode 2: Wifi Connection

Add Device → Add Manually (Choose 'Small Home Application', then choose 'Diffuser'. Please allow Bluetooth permissions and location access) → Connect to Wifi (Select 2.4GHz Wi-Fi) → Connect to device (Reset the device first, and confirm the indicator is blinking rapidly)

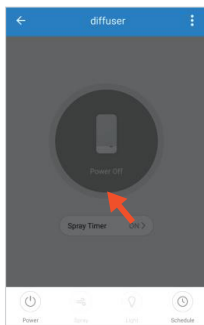


Wait for two minutes countdown → Rename → Done

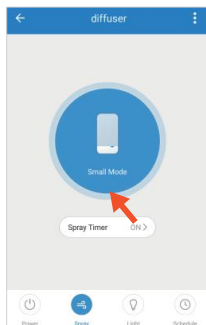
If this is the second to use, please directly click the button  start the device.



APP Control Guide



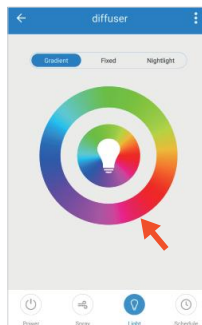
Touch Power to turn on/off both the light and the mist.



Touch Spray to control mist.

Spray Mode: Weak Mode/Strong Mode/Off

Spray Timer: ON/1H/3H/6H

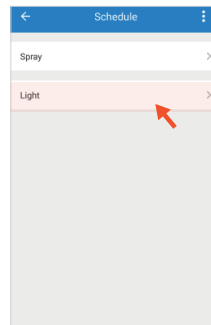


Touch Light to control light.

Gradient:
Light color will cycle automatically.

Fixed:
Fix one color and brightness adjustable.

Nightlight:
Fix at green light and brightness adjustable.



Touch Schedule to set mist or light schedules.

Note & QA

Note

- In order to pairing successfully, it's better to operate near the WIFI router.
- If your home Wi-Fi does not require a password, leave it blank.
- The device only supports 2.4GHz networks. 5GHz network is unavailable.
- If Failed to Add, please unplug the diffuser for 2 minutes and try again.

QA

Q: Router can not access the Internet, dose it support the local area network? Can it directly connect to cellphones hot spots?

A:The Android version supports LAN control, while Apple version currently not. The device must be connected to the Internet via a router to communicate with the mobile server.

Q: Why can not I get a registered SMS verification code? Why can not mobile phone connect device hotspot?

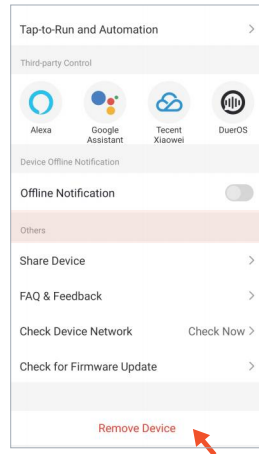
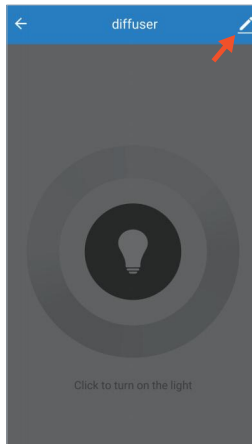
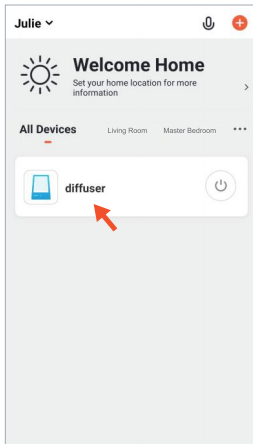
A:Permission is limited. Select 'Allow' when you encounter authorization during installation.

Q: What should I do if I used wifi connection last time and want to use Bluetooth connection this time?

A:If you want to change from wifi connection mode to bluetooth connection mode, or from bluetooth connection mode to wifi connection mode, please remove the device first, and then refer to the corresponding steps page5-8.

Amazon Echo Connection

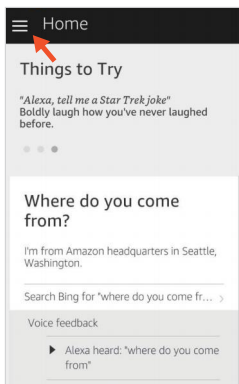
1. Download Tuya Smart from App Store (ios System) or Google Play (Android System),then register TuyaSmart via phone number or email,please refer to page 2-4.
- 2.If the diffuser was added to TuyaSmart before, please follow the steps below to remove the device from TuyaSmart.
- 3.If no device added to TuyaSmart before, please go to next step.



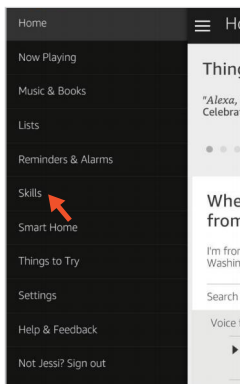
Alexa Connection

1. Connect the Alexa device to the power supply.
2. Download the Alexa APP, log in to the Amazon Alexa account and make sure the Echo/Echo Dot is set up and working properly (If the settings are not complete, please refer to the steps at page 15 'Echo/Echo Dot Operation Guide' or Echo user manual to complete the setup first.)
3. In the Alexa app menu bar, go to 'Skills' → Search TuyaSmart App.

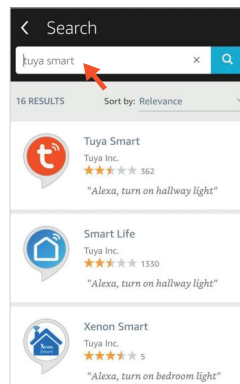
Click menu at the upper left corner.



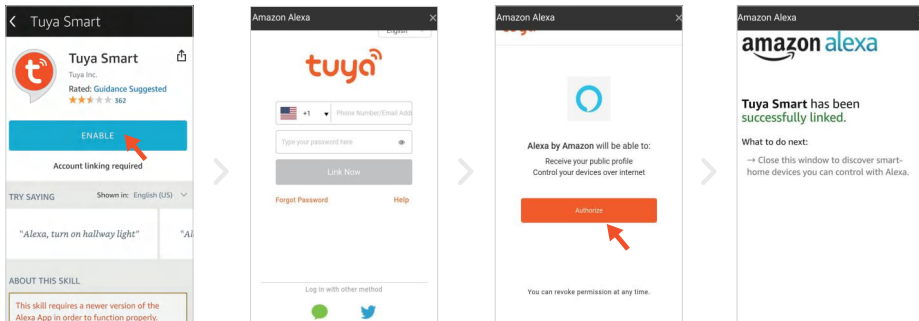
Click Skills to enter skill store.



Search TuyaSmart



4. Click Enable → Enter the TuyaSmart account (If you have not registered TuyaSmartapp, please register first) → Authorize---Successfully.



5. Back to TuyaSmart app → Follow the 'steps to connect with TuyaSmart' on page4 to add device. If the diffuser has been added before, please remove the Device, exit APP and re-login to add.

Notice: Device must be added after Alexa authorized TuyaSmart APP successfully, otherwise it will not find the device.

6. After the circle reach to 100%, Alexa will say: I found a 'diffuser', to control it, say turn on 'diffuser'. It indicating that the connection is successful, you can control the diffuser with Alexa.

Alexa Voice Command

Notice: Please follow the instructions strictly to speak word by word slowly, this could ensure Alexa respond correctly.

Device On/Off Orderings:

Alexa, turn on diffuser/Alexa, turn diffuser on

Alexa, turn off diffuser/Alexa, turn diffuser off

Color Setting:

Alexa, turn the diffuser red(white, green, yellow, blue ,Purple,orange)

Alexa, turn the diffuser to red(white, green, yellow, blue ,Purple,orange)

Alexa, change the diffuser to the color blue (white, green, yellow, red,Purple,orange)

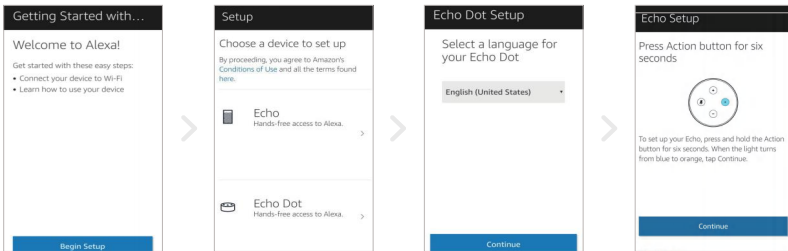
Percentage Setting---LED Brightness Adjustment

Alexa, set diffuser to 10(20,30,40,50..)percent

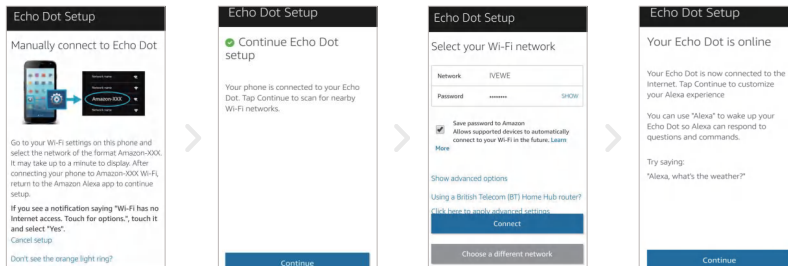
Tips: Because the Amazon Alexa system is partially opened for the TuyaSmart color control, so not all colors can be correctly responded, we are keeping solving it, thanks for your kind understanding!

Echo/Echo Dot Operation Guide

Click 'begin set up' → Echo/Echo --Dot → Continue



Go to Wi-Fi settings on this phone and select the network of the format Amazon-xxx → Return to Amazon Alexa app click 'Continue' → select the Wi-Fi and enter the password → Echo Dot now is connected to the internet.



Manual operation

MIST/WIFI Button

Press once: Turn on the mist.

Press again: Turn off the mist.

HIGH/LOW Button

Short press the HIGH/LOW button, one beep for strong mist and two beeps for weak mist.

LIGHT Button

Press once: Turn on the light and color will cycle automatically.

Press again: Fix at one color.

Press three times: Color will cycle again.

Long press the light button for 2 seconds, turn off the light.



Clean the water tank every 3 days

- Be aware that high humidity levels may encourage the growth of biological organisms in the environment.
- Do not permit the area around the humidifier to become damp or wet. If dampness occurs, turn the output of the oil diffuser down. If the oil diffuser output volume cannot be turned down, use the oil diffuser intermittently. Do not allow absorbent materials, such as carpeting, curtains, drapes, or tablecloths, to become damp.
- Unplug the appliance during filling and cleaning.
- Never leave water in the reservoir when the appliance is not in use.
- Empty and clean the oil diffuser before storage. Clean the oil diffuser before next use.



Warning: Micro-organisms that may be present in the water or in the environment where the appliance is used or stored, can grow in the water reservoir and be blown in the air causing very serious health risks when the water is not renewed and the tank is not cleaned properly every 3 days.

Specifications

Dimensions	Approx 168x121mm
Weight(excluding adapter)	Approx 520g
Power:Input/Output	AC100-240V50.60HZ/DC 24V 650mA
Length of Cord	Approx 170cm
Electric Consumption	Approx 13W
Time Mode	Set at any time to turn on/off
Tank Capacity	500ML
LED Colors	7 Bright, 7 Dim
Materials	PP/ABS
Accessories	AC Adapter And Manual, Measuring Cup
Method of Mist Production	Ultrasonic vibration at approx 2.4MHz

Brand: ASAKUKI

Product Name: Essential Oil Diffuser

Model Number: 100-DF010

Power Supply: DC 24V from adapter; 0.65A, 15.6W

WEEE-Reg.-Nr: DE: DE 41980660 FR: FR031399_05UERI

Manufacture: Chongqing ChuangHong DianZi ShangWu YouXian Gongsi

Address: 1 zhuang 11-3, jin kai da dao 1228 hao, bei bu xin qu, Chongqing, 401120, China

UK	REP
----	-----

UK Responsible Person: APEX CE SPECIALISTS LIMITED

Address: 89 Princess Street, Manchester, M1 4HT, UK

Contact: Wells

Tel: +441616371080

E-mail: info@apex-ce.com

Made In China

