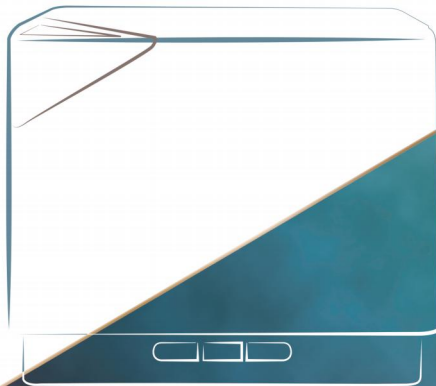


# Quick Start Guide

---

Premium Essential Oil Diffuser



FOR A BETTER LIFE



# Accessories

This manual book applies to all same model diffusers with different colors.



Pure White



White Wood



Light Wood



Cherry Wood



Dark Wood



Diffuser \* 1



User Guide \*1



AC Power Adapter \*1



Measuring Cup \*1



## Notice:

AC power adapter and measuring cup are included in the water tank.

# Using Steps



Plug  
the power

## Add

water and 5-6 drops of essential oils  
(not included)



Press to adjust the LED light

A

Press to adjust the mist density

B

Press to set the timer

C

'🕒' pressed down to power off





# Controlling



## Power On Mist:

After power is connected, short press the 'MIST' button once. You will hear one beep and it will be set automatically at steady on.

## Set Mist Time Mode:

Short press 'MIST' button and green indicator light will cycle on 'ON'/1H'/3H'/6H', it means the misting time be set on continuous on / one hour / three hours / six hours.

## Set To Mist Continuously At 20+ Hours:

Short press 'MIST' button till the green light stays on 'ON'.

## Power Off Diffuser:

Long press 'MIST' button for two seconds, you will hear two beeps, mist and light both turn off and it means the diffuser has been turned off completely.



# Controlling

## Power On:

After power is connected, short press the 'LIGHT' button once. You will hear one beep and the LED light will cycle from dim to bright gradually.

## Cycle Color:

When short pressing 'LIGHT' button, the color cycles automatically every 3 seconds from dim to bright.

## Fix Light At One Color:

Press 'LIGHT' button again after the light cycling. It will fix at one color in dim or bright mode.

## Fix At Your Favorite Color:

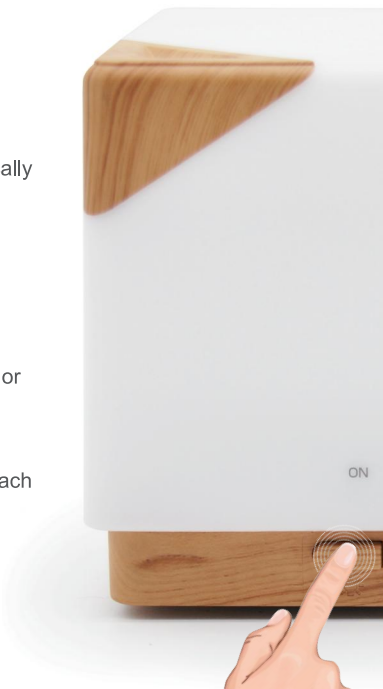
Press 'LIGHT' button once when light cycles to your favorite color and the light will be fixed.

## Adjust Color Brightness Or Dim:

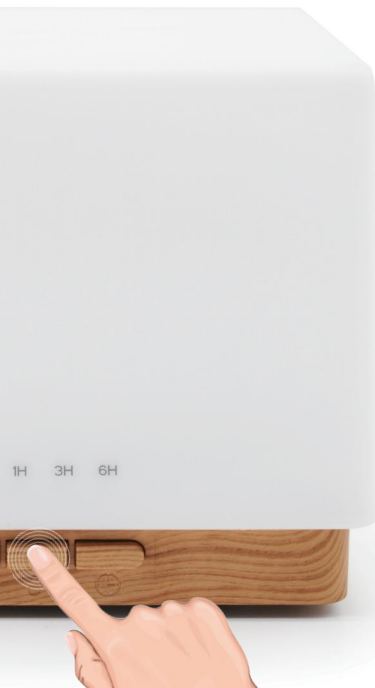
Press 'LIGHT' button twice after powering the diffuser on and each time you press will adjust the color to a bright or dim status.

## Power Off Light:

Long press the 'LIGHT' button for two seconds, you will hear two beeps, light will be turned off alone (mist is still on).



# Controlling



## Strong mist / Weak mist

Short press the button, one beep for strong mist and two beeps for weak mist.

## Clean & Maintenance

Please clean the diffuser per week as follows:

- Unplug the diffuser and pour out the remaining water from 'DRAIN SIDE'.
- Add 2-3 drops of vinegar to 100ML warm water (up to 70°C)
- Leave diffuser for 5 minutes and gently shake and pour out water.
- Wipe the diffuser with a dry soft cloth.
- If the diffuser will not be used for a long time, please keep it clean and dry

# Fast QAs

Q: Can I set to run light on only or mist on only?

A: Yes. Long press 'LIGHT' button for 2 seconds and light will be powered off; Mist runs only. Long press 'MIST' button for 2 seconds and diffuser will be turned off, press 'LIGHT' once for light on only.

Q: what's the 5 in 1 function of diffuser?

A: Diffusing aroma fragrance, humidifying air, purify air, night light and skin moisturizing.

Q: Does not diffuse strong enough mist.

A: It is set at a best humidity value for body to breathe in, it's wrong that the more mist it sprays, the better the diffuser is.

Q: Essential oil smells weaker for this 700ml than 100ml with same drops oil.

A: If smell is strong or weak is affected by proportion between water and essential oil. Normally per 100ml water match 3-5 drops essential oils. 700ml should add about 8-12 drops. Weak smelling oils such as lemon could use drops more.

Q: Is the diffuser dual voltage up to 240V?

A: Yes. Its input dual voltage is at AC 100-240V, 50-60Hz and output voltage is DC 24V, 650mA.

Q: How many square feet does this cover?

A: It covers a room under 323-376 sq.ft.

## Notice

- When filling water, do not exceed the max line marked on water tank.
- Please power off diffuser first before adding water.
- Diffuser will beep two times and turn off automatically when water used up.
- Please use pure natural essential oils.
- If the diffuser is leaking for any reason, please unplug the unit and pour out remaining water, shake diffuser gently to drain water inside, then dry for more than 24 hours.



Clean the water tank every 3 days

- Be aware that high humidity levels may encourage the growth of biological organisms in the environment.
- Do not permit the area around the humidifier to become damp or wet. If dampness occurs, turn the output of the oil diffuser down. If the oil diffuser output volume cannot be turned down, use the oil diffuser intermittently. Do not allow absorbent materials, such as carpeting, curtains, drapes, or tablecloths, to become damp.
- Unplug the appliance during filling and cleaning.
- Never leave water in the reservoir when the appliance is not in use.
- Empty and clean the oil diffuser before storage. Clean the oil diffuser before next use.



Warning: Micro-organisms that may be present in the water or in the environment where the appliance is used or stored, can grow in the water reservoir and be blown in the air causing very serious health risks when the water is not renewed and the tank is not cleaned properly every 3 days.



# 4 DIY Essential Oil Blends



Lavender

+



Orange

*Good Night Sleep*



Clove

+



Grapefruit

*Goodbye Mold*



Basil

+



Geranium

+



Orange

*Brain Booster*



Geranium

+



Lavender

+



Oregano

*Anti Allergy*

# Specifications

Dimensions	Approx 155x155x133mm
Weight(Excluding Adapter)	Approx 549g
Power: Input/Output	AC100-240V 50/60Hz DC24V 650mA
Length Of Cord	Approx 170cm
Power	Approx 14W
Time Mode	ON / 1H / 3H / 6H
Tank Capacity	700ML
LED Colors	7 Bright,7 Dim
Material	PP/ABS
Accessories	AC Adapter And Manual, Measuring Cup
Working Frequency	2.4MHz

Brand: ASAKUKI

Product Name: Essential Oil Diffuser

Model Number: FK07Y

Power Supply: DC 24V from adapter; 0.65A, 16.5W

WEEE-Reg.-Nr: DE: DE 41980660 FR: FR031399\_05UERI

Manufacture: Chongqing ChuangHong DianZi ShangWu YouXian Gongsi

Address: 1 zhuang 11-3, jin kai da dao 1228 hao, bei bu xin qu, Chongqing, 401120, China

UK	REP
----	-----

UK Responsible Person: APEX CE SPECIALISTS LIMITED

Address: 89 Princess Street, Manchester, M1 4HT, UK

Contact: Wells

Tel: +441616371080

E-mail: [info@apex-ce.com](mailto:info@apex-ce.com)

Made In China

