

1

2

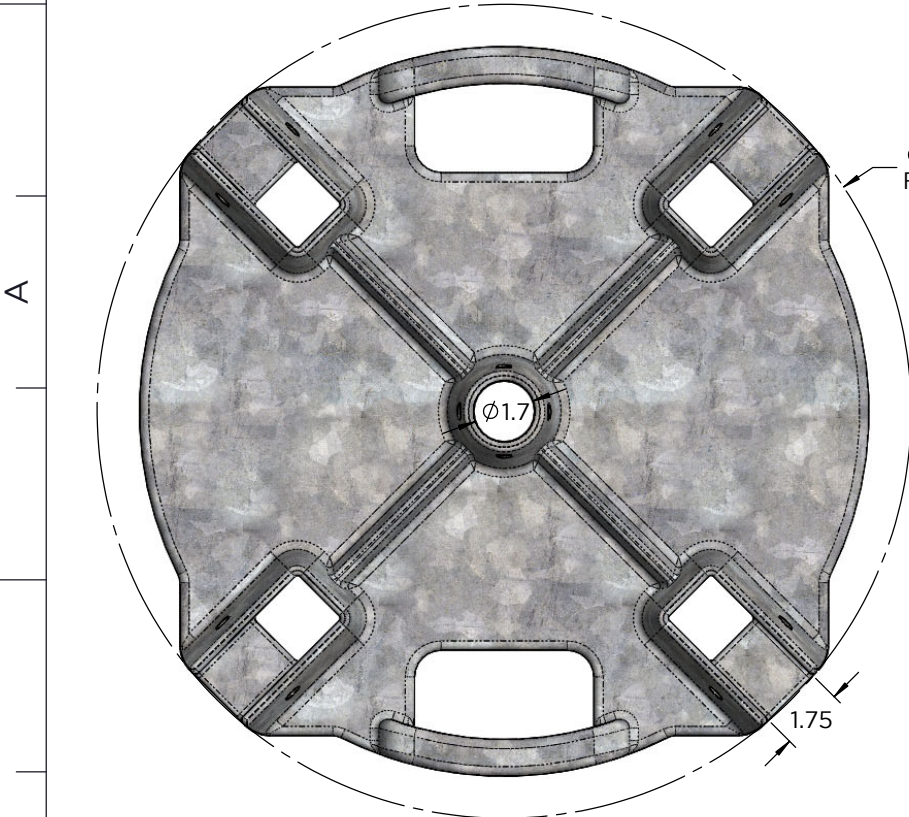
3

4

NOTES:

All Measurements in Inches
Approx. Part Weight: 103. lbs.

Parts:	Qty:



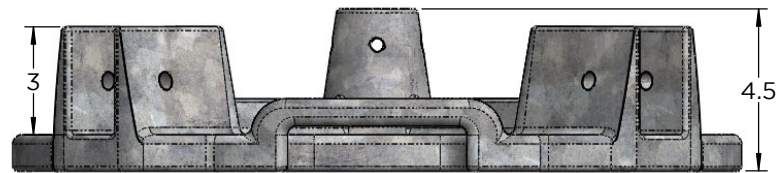
Ø22.6101
Foot Print

Ø1.7

1.75

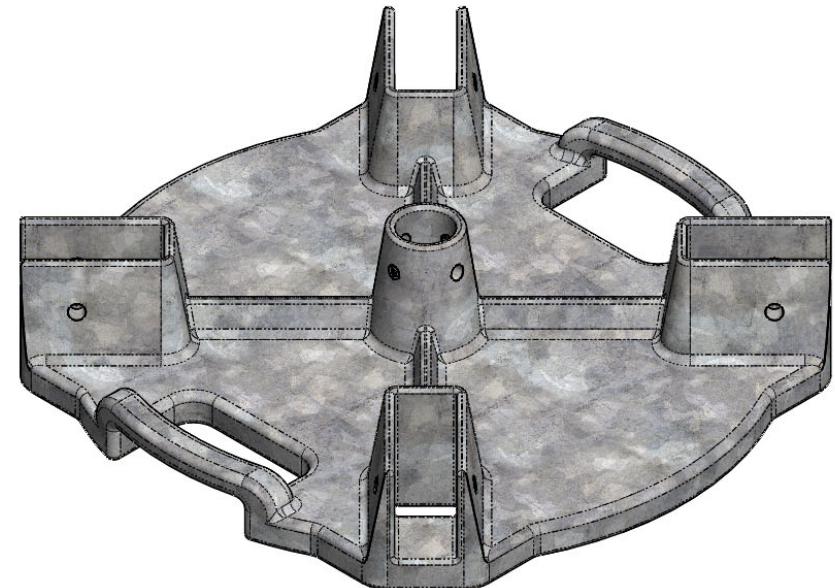
A

B



3

4.5



A

B



1345 TANEY STREET
 NORTH KANSAS CITY, MO 64116
 (T) 888-990-2990
 (P) 816-471-1349
 SALES@LEADINGEDGESAFETY.NET
 Information in this drawing is for reference only.

Scale: 3/16" = 1" (8.5x11)

Dwg: RB-07-CB-000-14

Cast Weighted Post Base Unit

1

2

3

4