

# Adding Accessories

In addition to drawing your guardrail systems, you can also add accessories such as skylight screens and roof hatches to your project.

To start adding an accessory you must first include the accessory system to your project by clicking the "Add Another System" button located at the bottom of the product side-panel on the left.

Upright Spacing

10 ft

Add Toe Board

No

Add Rubber Base Pads

No

Finish

Powder Coat

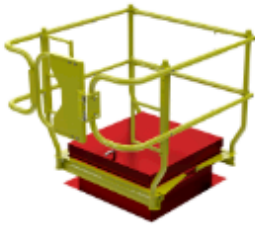
GUARDRAIL SECTION

To add your first guardrail section, select the "Draw" option and then click on the map where you would like the railing to start.

Delete System

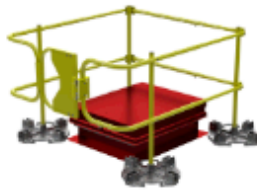
+ Add Another System

Choose the accessory you want to add by clicking on it in the system selector modal.



#### Roof Hatch Guardrail Systems

The Roof Hatch Guardrail system provides permanent full-perimeter fall protection and improved egress and ingress for all roof hatches.



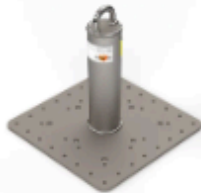
#### Weighted Base Roof Hatch

Non-penetrating system, sits on top of roof surface, uses heavy bases for support. The Roof Hatch Guardrail system provides permanent full-perimeter fall protection and improved egress and ingress for all roof hatches.



#### Domed Skylight Fall Protection Screens

The Domed Guardrail System mounts to the skylight frame making it virtually impossible to experience a skylight-related fall.

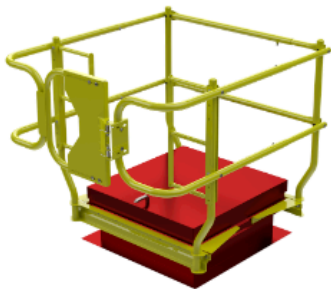


#### Roof Anchor Points

Roof Anchor Points are engineered to provide optimal safety and reliability in fall arrest, fall restraint, and window washing tie-back applications.

Configure the accessory options as desired. NOTE: you can change these options later.

#### Roof Hatch Guardrail Systems



The Roof Hatch Guardrail system provides permanent full-perimeter fall protection and improved egress and ingress for all roof hatches.

#### Options

Size

30" x 30-54" ▾

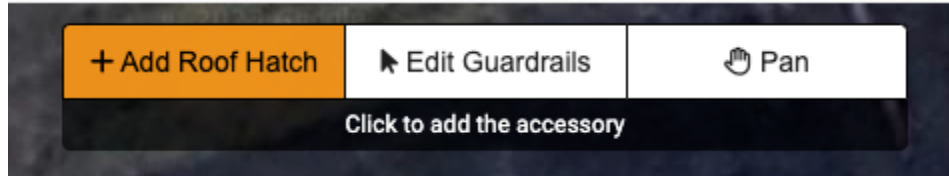
Finish

Powder Coat ▾

Cancel

Select

With the accessory system selected in the side panel, you can now begin placing instances of the accessory in your project. The drawing controls at the top of the screen will now include an "add" mode which will allow you to add the accessory. In this mode, simply click anywhere on your project to add the accessory.



Accessories that you have placed in your project can be moved by clicking and dragging while in "edit" mode.

You can also delete an instance of the accessory from the side panel or by using the context menu that appears when you right-click the accessory.

