

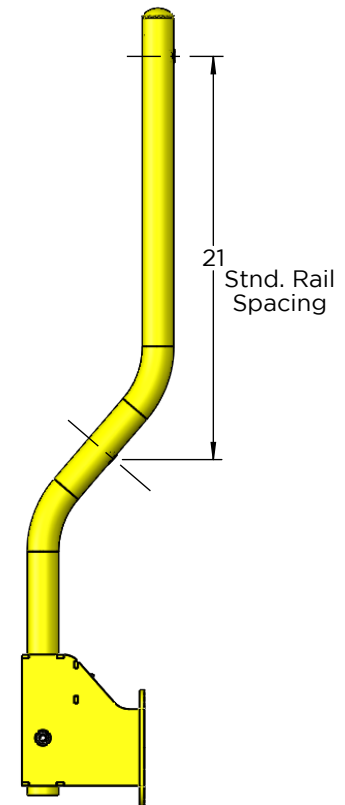
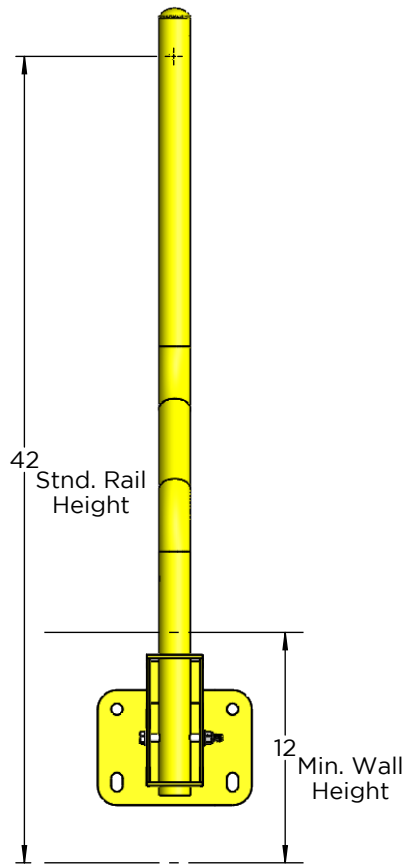
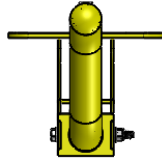
**NOTES:**

All Measurements in Inches

Approx. Part Weight: 25. lbs.

Weight and Heights Can Change  
Based on Job Specifications

Parts:	Qty:
--------	------



1345 TANEY STREET  
NORTH KANSAS CITY, MO 64116  
(T) 888-990-2990  
(P) 816-471-1349  
SALES@LEADINGEDGESAFETY.NET  
Information in this drawing is for reference only.

Scale: 1/10" = 1" (8.5x11)  
Dwg: FMB-031-17  
Flush Wall Mounted Base Railing  
System  
Standard Base w/ Bent 1 5/8" x  
1/4" Vertical Post Sub-Unit