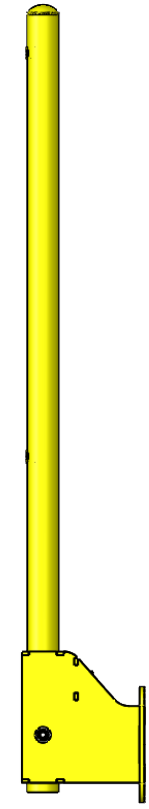
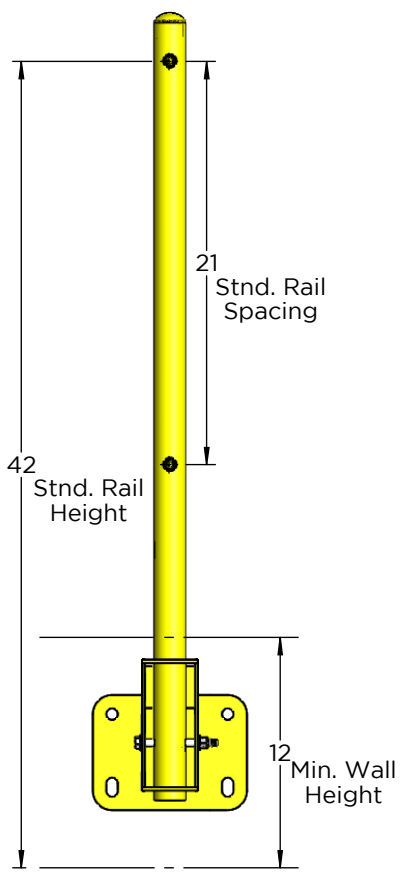
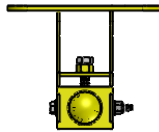


NOTES:

All Measurements in Inches
Approx. Part Weight: 20. lbs.
Weight and Heights Can Change
Based on Job Specifications

Parts:	Qty:
--------	------



1345 TANEY STREET
NORTH KANSAS CITY, MO 64116
(T) 888-990-2990
(P) 816-471-1349
SALES@LEADINGEDGESAFETY.NET
Information in this drawing is for reference only.

Scale: 1/10" = 1" (8.5x11)
Dwg: FMB-011-17
Flush Wall Mounted Base Railing System
Standard Base w/ Straight 1 5/8" x 1/4" Vertical Post Sub-Unit