

RainPoint





User Manual

Model: HGS-Z238



Indoor Hydroponic Garden Kit (13 Pods)

Need Help?

-  WhatsApp: +1 626-780-5952
-  Email: service@rainpointonline.com
-  US TEL: +1 833-381-5659
(Mon-Fri: 09:30 AM-5:30 PM PST)
-  Web: www.rainpointonline.com

IMPORTANT SAFETY INSTRUCTIONS

When using this RAINPOINT electrical products, basic precautions should always be followed, including the following:

Read all instructions before using this RAINPOINT electrical product.



DANGER—to reduce risk of electric shock:

- 1.To reduce the risk of electric shock, the garden kit has a specific plug. Do not change the plug in any way.
- 2.Please use the power adapter with input voltage 100-240V, output voltage of 12V and output current of 2A to charge.
- 3.Always unplug the garden kit from the electrical outlet before cleaning or replacing the LED light board, water tank and water pump.
- 4.Unplug the garden kit from outlet before putting on or taking off parts.
- 5.Never operate the garden kit if it has a damaged cord or plug, if it is not working properly, if it has been dropped and damaged, or if it has been dropped in water. If any of these conditions occur/exist, please send an email to service@rainpointonline.com.



WARNING – to reduce risk of burns, fire, electric shock, or injury to persons:

- 6.Do not use outdoors. This product is intended for household and residential use only.
- 7.Do not assemble the device while it is running.
- 8.Keep power cord away from heated surfaces.
- 9.Do not expose the light board to water.
- 10.Do not place or immerse electrical outlets, cords, plugs, or light board covers in water.
- 11.To prevent damage to the device, make sure that no electrical parts are directly submerged in water. If water is splashed or spilled on any electrical parts, thoroughly dry all cables and power-related parts.
- 12.Do not disassemble and modify the device without authorization. The warranty will be void if the device has been disassembled or tampered with.
- 13.When the LED lights are on, do not touch the LED lights or light board.
- 14.Do not touch the LED lights or light board with wet hands or wet cloth unless appliance is unplugged from outlet.
- 15.This appliance is not intended for use by persons (including children) with reduced physical, sensory or mental capabilities, or lack of experience and knowledge, unless they have been given supervision or instruction concerning use of appliance by a person responsible for their safety.
- 16.Children should be supervised to ensure they do not play with the appliance.

PRODUCT INTRODUCTION

Packing List



or

Product Name :

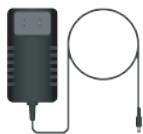
Indoor Hydroponic Garden Kit

Model NO :

HGS-Z238

Color :

Black-Silver or Black-Wood



1 x Adapter



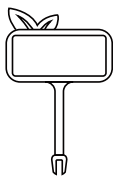
13 x Planting Basket



13 x Planting Sponge



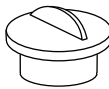
1 x A Solid Nutrients



13 x Tag



13 x Grow Dome



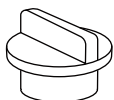
6 x Black Cover



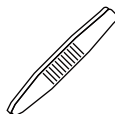
1 x B Solid Nutrients



1 x Spare Water Outlet Cover



1 x Water Inlet Cover

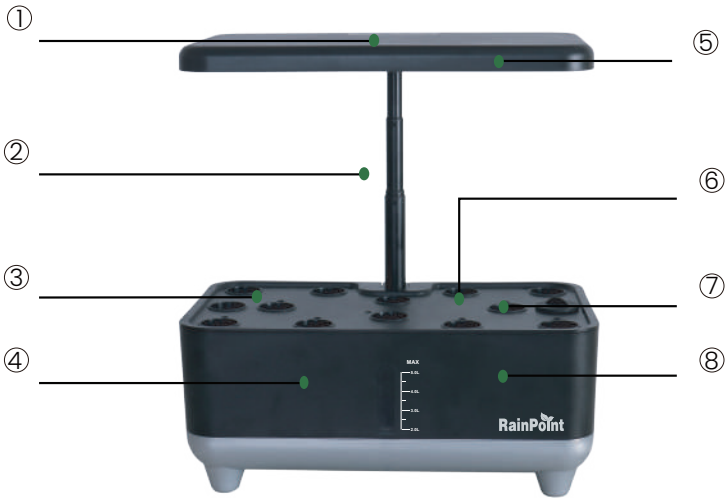


1 x Tweezers



15 x blackout stickers

Product Overview



① Control Panel

② Lifting Rod (Max height 14 inches)

③ Grow Deck

④ Water Level Window

⑤ LED Light Board

⑥ Planting hole

⑦ Water Inlet

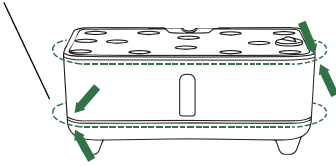
⑧ Water Tank

Specification

Power Adapter	100V~240V~50/60Hz
Input	12V 2A
Operating Voltage	12V
Pump Input	DC12V 0.08A±10%A
Standby Current	<30uA
Pump Flow	150±10%L/H
Light Panel	NOT Waterproof
Water Tank Capacity	5L
Working Temperature	15 C - 30 C / 59 F - 86 F
Material	ABS
Product Weight	1.8kg/3.96lb
Product Size	35*20*17~52cm / 11.8*7.8*6.7~20.5 inches
Support telescopic height	36CM/14 inches

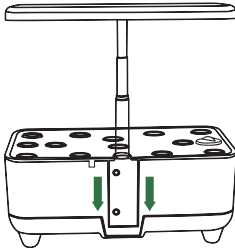
3-STEP EASY INSTALLATION

securely seated



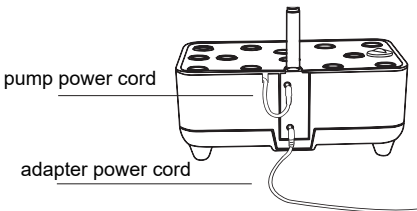
01

Make sure that water tank is securely seated in base and that grow deck is properly aligned on water tank.



02

Make sure that lifting rod is securely plugged in the back of the water tank (no gaps).

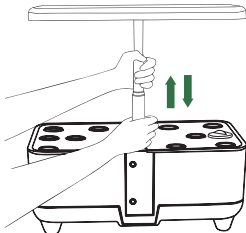


03

Plug the pump and adapter power cords into the corresponding power ports on the back of the water tank.

NOTE : DO NOT plug the adapter into an outlet before attaching the pump and adapter power cords.

❖ How to raise and lower the light board?



Hold down the bottom of the lifting rod with one hand, grab the top of the lifting rod with the other hand and push up or down gently to raise or lower the light board.

TIPS: Plants love light!

Keep the light board 3~4 inches away from the top of the plant.

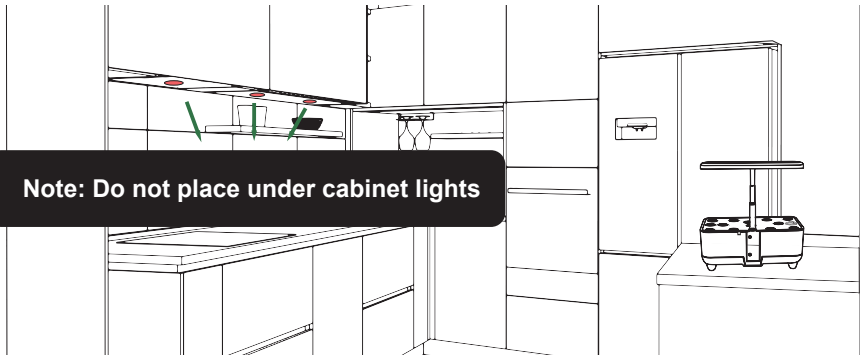
When planting new seeds, adjust the light board down, then up as the plant grows, and trim the plant to keep **3~4 inches** from the top of all plants. If the light board is too high, it will cause the plants to grow leggy, and if the light board is too low, it will burn the plants. If the plant grows tall, timely pruning will help the plant grow stronger.

❖ Where should I place my indoor garden kit?

Please place it on a solid, waterproof surface, and in a natural ventilated place.

In an ambient temperature of 59 °F - 86 °F (15-30 °C) (optimum).

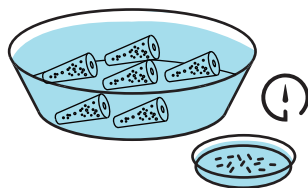
- ◆ The indoor garden kit comes with grow lights. Do not place it on a sunny window or under cabinet lights to avoid overheating of the plants.
- ◆ Keep away from heat sources (e.g., stoves, furnace vents) or cold sources (e.g., A/C vents).
- ◆ Keep out of reach of children or pets.



PLANTING YOUR INDOOR GARDEN

01. Prepare seeds & sponges

The indoor garden kit does not include seeds. Please select local seeds of a well-known brand.

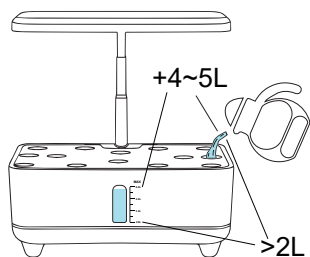


- 1 Soak the seeds in water for **5-6 hours** in advance.
- 2 Soak the planting sponges to be planted in water for **5 minutes**.

02. Add water

Open the water inlet cover, pour normal temperature tap water or bottled distilled water from the hole to the water level of 5L.

TIPS FOR ADDING WATER:



Before all the roots of the plant are strong enough to absorb water, maintain the water level at 4~5L to ensure that the sponge is in contact with the water.

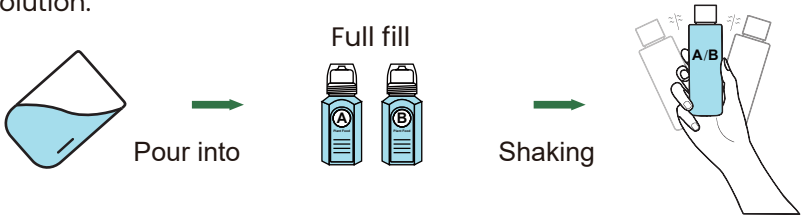
When the water pump is loud or the water level is below 2L, please add water in time to avoid water shortage.

NOTE:

- ◆ **DO NOT** overfill the water.
- ◆ **DO NOT** use well water or softened water. Most well water has a lot of dissolved solids that can upset our nutrient balance, and demineralized water has sodium, which can cause plants to suddenly turn brown or grow poorly.

03.Add Nutrient Solution

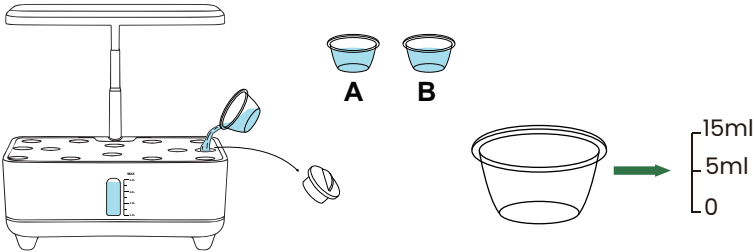
- ① **Full fill** the A solid nutrition bottle and the B solid nutrition bottle with room temperature tap water or bottled distilled water and shake well until well mixed. Then you can get A nutrient solution and B nutrient solution.



- ② Use the nutrient solution bottle's cap as a measuring cup.



- ③ Add 25ml A nutrient solution and 25ml B nutrient solution from the water inlet to the water tank filled with 5L water.



TIPS FOR NUTRITIONAL FEEDING:

- ◆ Make sure to add nutrients in proportion. Only 5ml of A nutrient solution and 5ml of B nutrient solution can be added to 1L of water.

Water	Nutrient Solution
1L	5ml A + 5ml B
2L	10ml A + 10ml B
3L	15ml A + 15ml B
4L	20ml A + 20ml B
5L	25ml A + 25ml B

- ◆ Usually, the nutrient solution needs to be added once **every 1~2 weeks**. According to the amount of water in the water tank, add the nutrient solution in proportion. **It is recommended to top up the water tank before adding nutrient solution.**
- ◆ When planted in an environment with high temperature, the water evaporates faster and the concentration of the nutrient solution will be higher. It is recommended to change the water in the water tank once every 1-2 weeks. (Please see the device maintenance chapter for how to change the water)

NOTE:

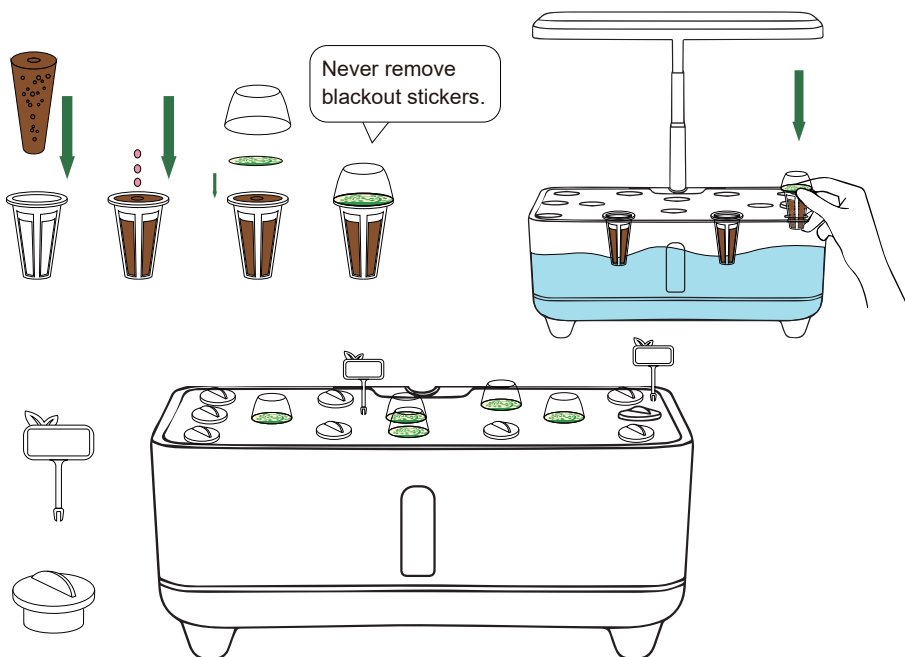
- ◆ **DO NOT overfeed!** Adding too much nutrient solution may be harmful to your plants.
- ◆ **DO NOT use well water or softened water.** Most well water has a lot of dissolved solids that can upset our nutrient balance, and demineralized water has sodium, which can cause plants to suddenly turn brown or grow poorly.
- ◆ **Make sure keep away from children and pets to avoid accidental ingestion.**

SHELF LIFE:

- ◆ The shelf life of unopened solid nutrition granules is up to 2 years when stored at an appropriate temperature and away from light.
- ◆ After adding water to make nutrient solution, if stored in a cool and dark place, the shelf life can reach 5 months.

04.Add Plant Basket

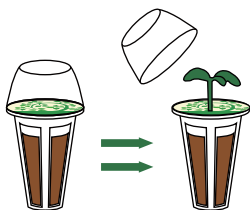
- 1 Put a planting sponge pre-soaked for 5 minutes into a planting basket.
- 2 Use a pair of tweezers to put 3-4 seeds pre-soaked for 5-6 hours into the bottom of the wet planting sponge hole.
- 3 Attach a blackout sticker to the top of the planting basket.
- 4 Place a grow dome on each planting basket to help the seeds germinate.
- 5 Insert the planting basket with grow dome into the basket containers on the grow deck. Keep the planting baskets always in contact with water.
- 6 Cover all empty basket containers with black covers to block the light and prevent the growth of insects and algae in the water tank.
- 7 Insert the tag into the hole next to the basket container to mark the plant type, plant height, and germination time.



* NEVER remove blackout sticker from planting baskets.
Blackout stickers help prevent mold/algae growth on the sponge.

TIPS FOR PLANTING SEEDLINGS:

- ◆ Some seeds germinate in less than 24 hours while others may take 2 to 4 weeks to germinate. **Please be patient.**
- ◆ Add 3 or 4 pre-soaked seeds per sponge to increase germination rate.
- ◆ After the seeds germinate, **keep only one strong seedling** and remove the others from the sponge to avoid nutritional deficiencies. If more than one seedling is kept, poor growth may result from insufficient nutrients.



- ◆ DO NOT remove the grow dome on the planting basket until the plants germinate. Once the plant germinates, remove the grow dome immediately to avoid leggy seedlings. Grow domes can be reused/recycled.

- ◆ "Leggy Seedlings" are seedlings with tall, thin, slender stems that become top-heavy, unable to support themselves, and grow weaker and prone to fall over.



- ◆ When the plants grow larger (e.g., tomatoes, peppers), please leave some empty planting basket containers and cover them with black covers to give the plants more room to grow.

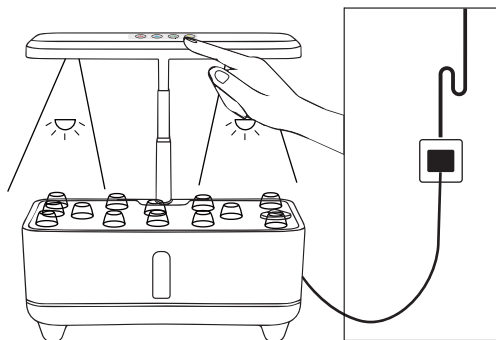
05. Turn on lights and pumps

- 1 Adjust the height of the light board and keep it 4 inches away from the plants.
- 2 Plug the power adapter into an outlet.
- 3 Press the power button to turn on the device, and the power indicator will turn green.
- 4 Press the vegetables button or flowers & fruits button to turn on the light. It will run on a 16 h-on/8 h-off cycle. Press it again to turn it off.
- 5 Once the device is turned on, the water pump will automatically run a 30 minute on/30 minute off cycle.

Please read the next page for detailed control panel functions and LED light modes...

Careful:

DO NOT turn on the device if there is no water in the tank. The water tank must contain at least 2L of water.



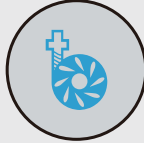
Congratulations!

You will harvest a beautiful indoor garden.

CONTROL PANEL SETTINGS



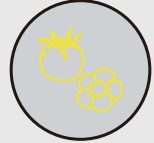
Power



water



Vegetables



Flowers
&fruits



Power:

Once the device is plugged in, the power light will turn red. Press the power button to turn it on, and the power light will turn green. Press the power button to turn it off completely (it will not turn on automatically), and the power light will turn red.

NOTE:

The device has a memory function, and the current state will be memorized after 3 seconds of any button operation, and it will be restored when the power is turned off and restarted.



WATER PUMP:

After the device is turned on, the water pump will automatically run a 30-minute on/30-minute off cycle. When the water pump is running, the water button light is blue. If the water pump is running, press the water button to deactivate it for 10 hours (the light is green when the pump is at rest). It will then automatically resume the 30-minute on/30-minute off cycle. Press the water button again to turn the water pump back on. Press the power button to turn it off completely (it will not turn on automatically).

TIPS FOR WATER PUMP

- ◆ The 30-minute on/30-minute off cycle mode of the water pump can provide sufficient oxygen to the plant roots.
- ◆ When the water pump is running loudly, please fill the water tank in time.



2 LED LIGHT MODES:

The light board only contains the spectrum that is effective for plant photosynthesis, it is a full-spectrum LED plant light. And it has a built-in timer for the Grow Light that automatically provides your plants with “sunlight” (16 hours per day). Depending on the plant, you can choose between 2 LED spectrum modes: Vegetables Mode or Flowers & Fruits Mode.

A. Vegetables Mode:

Press the Vegetable button (the button light is on), and the LED light will switch to a spectrum (red+blue+white) suitable for vegetable growth. It will run on a **16-hours on/8-hours off cycle**.

Press the Vegetable button again (the button light goes off), the LED light of this mode will turn off, **and after 10 hours**, it will run the cycle of 16 hours on/8 hours off again.

B. Flowers & Fruits Mode:

Press the Flowers & fruits button, the LED light will switch to a spectrum (red+white) suitable for flowers/fruits growth. And it will run on a **16-hours on/8-hours off cycle**.

Press the Flowers & fruits button again (the button light goes off), the LED light of this mode will turn off, **and after 10 hours**, it will run the cycle of 16 hours on/8 hours off again.

TIPS FOR LED LIGHT

- ◆ **You can easily switch between the two modes.** In the vegetables mode, press the Flowers & fruits button to switch to the flowers & fruits mode, and vice versa. The cycle will reset after each toggle.
- ◆ Choose the vegetables mode or flowers & fruits mode according to the actual needs when the seeds germinate. For example, the vegetables mode can also be selected to promote the growth of leaves during the germination and growth periods of tomatoes/peppers before flowering and fruiting.
- ◆ As long as your plants are getting enough light, it doesn't really matter when the lights are on/off. You can choose to turn it on in the morning and off at night to fit your wake and sleep schedule. It only needs to be turned on for the first time in the morning, and it will be turned off at night after 16 hours, keeping the same switching time every day.
- ◆ **If the light interferes with your sleep**, please press the button of the current mode to turn it off. After 10 hours the light will automatically turn back on and cycle will resume. Do not turn off the power as this will prevent the lamp from restarting automatically.
- ◆ The auto-resume cycle after turning off the lights for 10 hours is to protect plants from people forgetting to turn the lights back on for a long time.

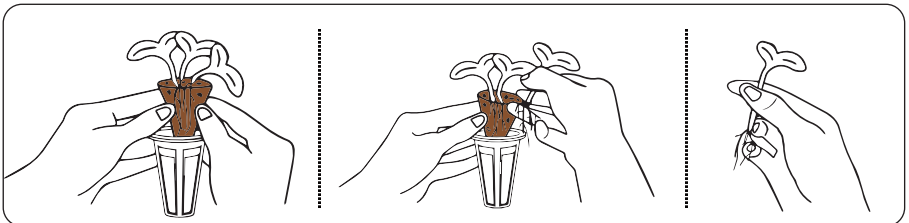
GARDENING TIPS FOR THE BEST HARVEST

GERMINATION:

- ◆ Plants have seasonal, period, and regional characteristics. Temperature, light and atmospheric humidity all affect plant growth. **Planting seeds that are suitable for the local season is highly recommended.**
- ◆ Please learn more about the seed information, optimal temperature and days to germinate before planting. Some seeds germinate within 24 hours, while others may take 1 to 4 weeks to germinate. For example, salad greens germinate better in cooler weather. Tomatoes and peppers will germinate faster at higher temperatures (above 70 °F). While it may take longer, healthy seeds will still germinate.
- ◆ **Soak the seeds for 6 hours in advance, plant 3~4 soaked seeds per sponge, and cover the grow dome to improve the germination rate.**
- ◆ Grow domes help regulate moisture and temperature for optimal germination. **Do not remove the grow dome until the seeds have germinated. However, once the seeds germinate, please remove the grow dome.** Because lack of light and failure to remove the grow dome in time can lead to leggy seedlings.
- ◆ If multiple seeds have germinated in a sponge, **only keep one strong seedling**, and the others need to be pulled or clipped.
- ◆ If the seedling grows crookedly, you can pick a small piece from the edge of the sponge and stuff it into the hole to help straighten the seedling.
- ◆ Space out leafy plants like tomatoes and peppers to give them more room to grow. Cover all empty basket containers with black covers to prevent algae from growing.

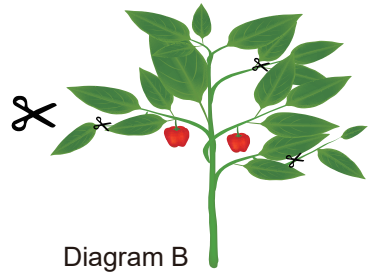
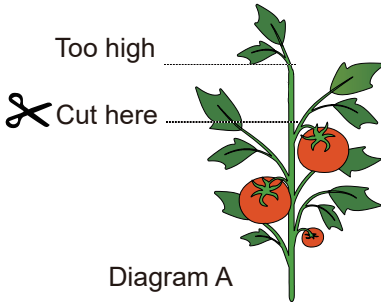
TRANSPLANT:

- ◆ Transplant only when plant roots have grown around the sponge.
- ◆ Split the sponge, remove one seedling, and move it to another pot. Combine the sponges and put them back together, keeping only one seedling to ensure adequate nutrition.



PRUNING:

- ◆ Prune your plants (Diagram A) instead of raising the light board. Pruning faster-growing plants (like Basil) above new leaves and keeping light low will ensure that slow-growing plants in the garden get all the light they need to thrive.
- ◆ Prune often to keep your garden healthy, but never prune more than 1/3 of each plant at a time.
- ◆ Plants compete for light, and faster-growing plants may block enough light to inhibit the growth of their slower-growing neighbors, who eventually die from lack of light. Spreading leaves must be pruned (Diagram B) to ensure that slow growing plants get enough light to thrive and produce high yields.
- ◆ Pruning means harvesting too! Enjoy fresh herbs in salads, soups, pizza, or sandwiches every time you prune. Plus, a full, lush garden looks much better than a giant, spindly, uncontrolled mess. So, be brave and prune!



LIGHT:

- ◆ Keep the light board 1~2 inches from the top of the plant.
- ◆ If the light board is too high, it will cause the plants to grow leggy, and if the light board is too low, it will burn the plants. If the plant grows tall, timely pruning will help all plants grow stronger.

POLLINATING:

- ◆ When fruiting plants (tomatoes, peppers, strawberries, eggplants, cucumbers, etc.) begin to bloom, we recommend that you hand pollinate them to help your plants increase crop yields.
- ◆ When pollinating, according to the condition of the plant, use one or more of the following methods:
 - 1 Place a fan near the plant, and the flowing air will pollinate the plant.
 - 2 Use a fine brush or cotton swab to pick up the pollen from the stamens and apply it to the pistils. (Recommended)
 - 3 Place your open hand inside the plant branch and gently move your hand back and forth to shake the plant and spread the pollen. Handle with care to prevent injury to the plant and inflorescences.

FLOWERING & FRUITING:

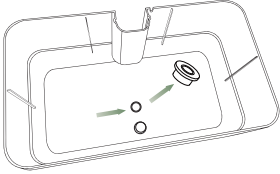
- ◆ Make sure to use Flowers & Fruits Mode.
- ◆ When the plants are flowering or fruiting, change the water and add nutrients in the correct proportion every week to ensure that the plants absorb enough potassium to flower and bear fruit.

HARVESTING:

- ◆ This indoor garden kit works best with a harvesting method known as "cut and cut again". In short, you enjoy frequent small harvests, then allow the plants to regrow and harvest again and again.
- ◆ Enjoy frequent, smaller harvests the first month or two until the plants mature to provide larger harvests.
- ◆ Frequent harvesting helps maintain a healthy garden, but remember to never harvest more than 1/3 of each plant at a time.
- ◆ For most salad greens, cut off 2 inches from the top of each plant, or harvest large leaves individually by cutting them off the base of the plant.

DEVICE MAINTENANCE

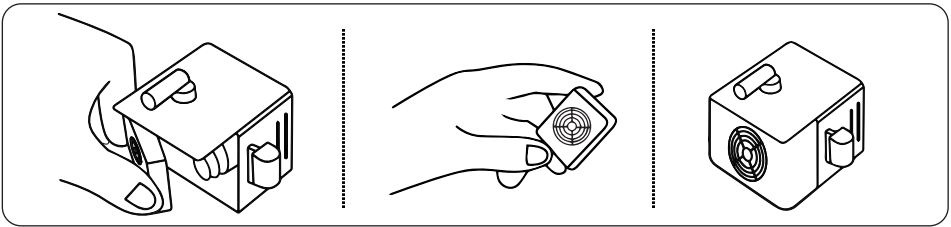
CHANGING WATER:



There is a drain hole at the bottom of the tank. Remove the rubber plug and let the water flow out.

- ◆ If the ambient temperature is too high and the water evaporates quickly, please change the water every 1~2 weeks to avoid excessive concentration of the nutrient solution.
- ◆ Once the plants bloom, change the water and add nutrients once a week to ensure that the potassium content is sufficient.

CLEANING PUMP:



Clean the water pump at least once a month.

Before cleaning, turn the power off.

Step 1: Remove the filter cover of the water pump

Step 2: Rinse it with water ONLY.

Any washing liquid will harm the nutrition balance.

Step 3: Install it back after cleaning.

DO NOT plug in the adapter when there is no water in the tank, this will shorten the life of the pump.

CLEANING WATER TANK:

During the planting process, if there are dead or poorly growing plants, they should be removed to prevent root erosion and bacteria from affecting the growth of other plants. If there is root rot, it is recommended to clean and disinfect the water tank in time so as not to affect other plants.

1 Why do only a few plants germinate and then wither quickly?

- A. Buying the right seeds is very important. For best results, purchase seeds from a reliable manufacturer and avoid purchasing seeds that are not suitable for hydroponic equipment.
- B. Make sure to use the correct ratio of nutrient solution and water.
- C. Use the lights properly and keep the light panels 1-2 inches from the top of the plants.
- D. Make sure to use the grow dome correctly as directed in the instructions.
- E. Keep them in an environment between 15 - 30° C (59° F - 86° F).

2 Why is the water pump making noise?

- A. When the pump is used for the first time, the noise may be caused by air blockage in the pump. This can be resolved by letting the pump run continuously for 3 to 5 minutes or by restarting it a few times.
- B. When the water volume is below 2L, add more water to 4L-5L, and the water pump will return to silence.
- C. Remove the filter cover of the water pump and make sure nothing is stuck inside.

3 Can sponges be reused?

If you pluck out the stems of the plants, they can be reused, but we don't recommend this as it's not as good as the first time you use it. You can buy extra planting sponges from our shop.

4 Does it kill the plant to remove it from a sponge?

Usually not, but it's best to wait until the plants are strong enough to survive.

5 Can I remove the plant from the water tank and plant it in a pot?

It is best to wait until it grows vigorously and is fully mature before transplanting it with the sponge to increase the survival rate.

6 Why don't the seeds germinate?

May be affected by temperature. Try planting it in soil to rule out the possibility of a problem with the seeds.

7 Why plants don't bloom or set fruit?

To ensure adequate nutrients, top up the water level frequently and add liquid nutrients in the proper proportions.

8 Why does the sponge become moldy, and how to deal with it? How to prevent and treat mold/algae buildup?

The causes of mold may be:

A. Water quality and air humidity. B. The quality of the seed you purchased.

How to do?

- A. Choose well-known brand seeds and remove unhealthy seeds or plants in time.
- B. Keep the tank clean by draining and flushing the tank thoroughly, discarding any sponges that come in contact with the mold/algae.
- C. Cover empty containers that are not in use with black lids to protect the tank from light that can harbor mold and bacteria.
- D. Cover the top of the sponge with our seed pod label (not included) or cover the sponge with an opaque film such as tin.

LIMITED WARRANTY

RAINPOINT warranty runs for one (1) year on this Indoor Garden Kit, from the date of original purchase, for the original purchaser/user. If you contact us to activate the warranty, the warranty can be extended to 5 years. The warranty covers any defect in material or workmanship, and RAINPOINT will repair any defect in material or workmanship, or replace these products with a product of like function and price.

However, the warranty does not apply to problems caused by: Normal wear and tear; Failure to follow the accompanying operating instructions; Products resulting from negligence, accident, improper use, maintenance or storage; Products that have been modified or repaired without authorization (including, but not limited to, modifications through the use of unauthorized parts or accessories).

CUSTOMER SERVICE

Our local professional customer service team guarantees hassle-free solutions within 24 hours on working days. If you have any questions and concerns about the product, or need any technical support, please feel free to contact us.

In order to serve you better, please remember to provide the order ID (number) in your email.

Scan the QR code to get fast support

US TEL: +1 833-381-5659 (EN)

(Mon-Fri: 09:30 AM-5:30 PM PST)

Email: service@rainpointonline.com

WhatsApp: +1 626-780-5952



RAINPOINT COMMUNITY

Share your life & usage & joy & ideas with RAINPOINT on social media and @rainpoint or post a hashtag #rainpoint, we will repost and send you planting sponges to you as a gift. And you may have the chance to be our brand ambassador! To get the newest products for free and building greatest things with us.



@rainpointglobal

FCC STATEMENT

This device complies with part 15 of the FCC Rules. Operation is subject to the following two conditions: (1) This device may not cause harmful interference, and (2) this device must accept any interference received, including interference that may cause undesired operation.

Warning: changes or modifications not expressly approved by the party responsible for compliance could void the user's authority to operate the equipment.

Note: This equipment has been tested and found to comply with the limits for a Class B digital device, pursuant to Part 15 of the FCC Rules. These limits are designed to provide reasonable protection against harmful interference in a residential installation. This equipment generates, uses and can radiate radio frequency energy and, if not installed and used in accordance with the instructions, may cause harmful interference to radio communications. However, there is no guarantee that interference will not occur in a particular installation. If this equipment does cause harmful interference to radio or television reception, which can be determined by turning the equipment off and on, the user is encouraged to try to correct the interference by one or more of the following measures:

- Reorient or relocate the receiving antenna.
- Increase the separation between the equipment and receiver.
- Connect the equipment into an outlet on a circuit different from that to which the receiver is connected.
- Consult the dealer or an experienced radio/TV technician for help.

Model: HGS-Z238



Scan the QR code to get fast support

US TEL: +1 833-381-5659 (EN)

(Mon-Fri: 09:30 AM-5:30 PM PST)

Email: service@rainpointonline.com

WhatsApp: +1 626-780-5952

Manufacturer: BALDR TECHNOLOGY CO.,LTD

ADDRESS: 322 Paseo,Walnut,CA 91789,United States

Email: service@rainpointonline.com Made in China

