

# **NISSAN PATROL** **Y62**



## **BASH PLATES**

---

**Estimated Fitting Time: 60 Minutes**

**GENERAL NOTES**

- Read through the fitting instructions before installation of accessory
- Always install the accessory following the fitting instructions. Failure to do so may cause damage to the vehicle or the accessory.
- Ensure all recyclable discarded vehicle accessory components and packaging are recycled following local recycling regulations.
- It is always recommended that this accessory is fitted by a qualified technician.
- Safely store and protect any removed vehicle components.
- Ensure all bare metal surfaces are protected using Automotive Bare Metal Primer and touch-up paint.
- Remove all metal swarf and dust from all vehicle surfaces if surface is used for accessory installation.
- These instructions are to be used in conjunction with rear bar fitting instructions.
- Make sure that harness is routed away from sharp edges and secured at every 200mm.
- Before removing the battery make sure the vehicle is in a position where the front doors can be fully opened as the park brake is on when in park.

**SAFETY NOTES**

- Check that all work practices comply with safety standards.
- Please wear appropriate clothing and use safety equipment.

**FITTING TIME**

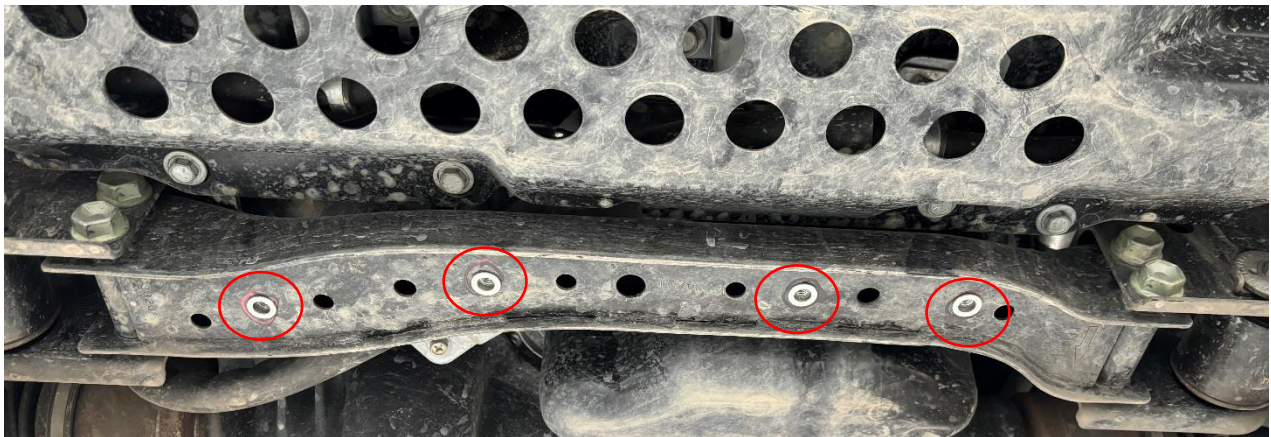
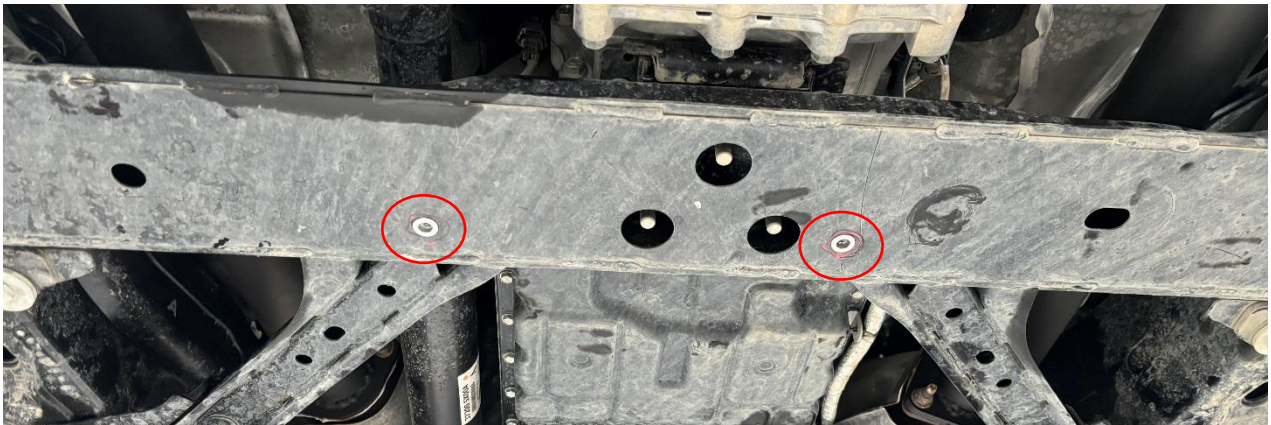
60 mins

**STEP 1**

- Start by removing the factory bash plates and discard.

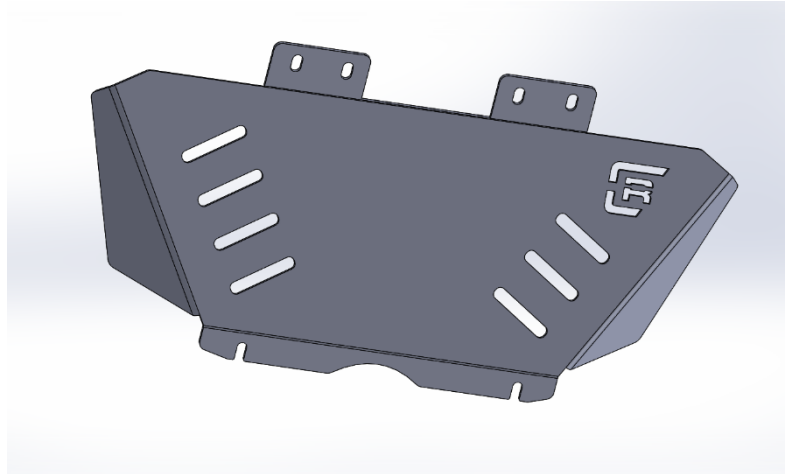
**STEP 2**

- Nutsert the 3 cross members with M8 nuserts supplied.
- Refer to images for locations
- Some of the holes need to be opened up to 9mm



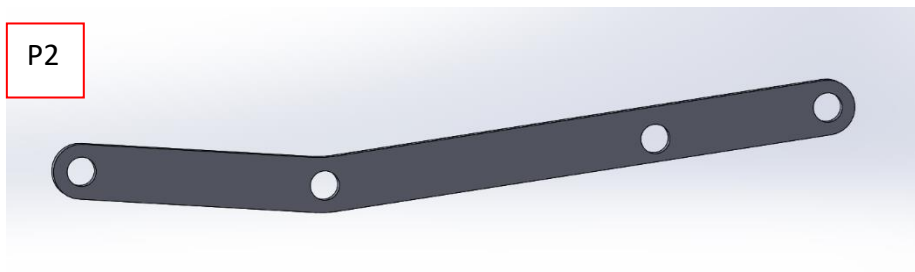
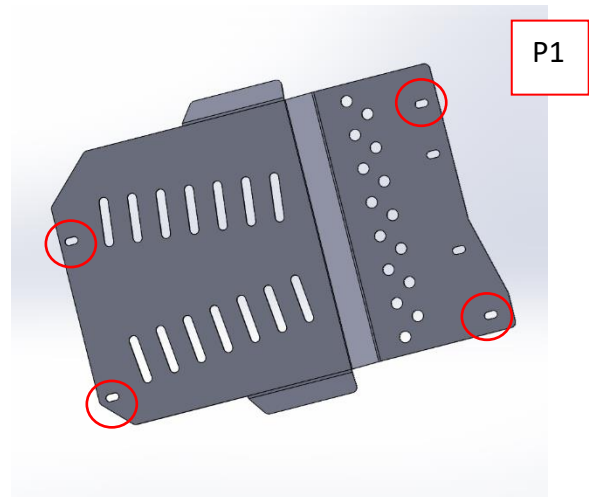
### STEP 3

- It's now time to fit the parts to the vehicle.
- Start from the front of the vehicle.
- Fit the front most bash plate using 6 x M8x30 bolts and heavy duty washers.



### STEP 4

- Then fit the 3<sup>rd</sup> bash plate (**image P1**) using space (**image P2**) at the front. This is done by using 4x M8x30 bolts and heavy duty washers in the outer most holes (**marked on P1**).

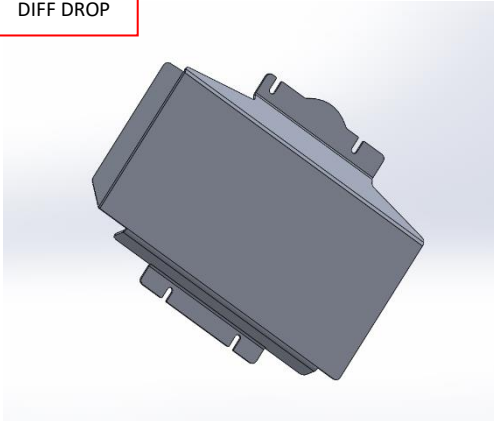


### STEP 5

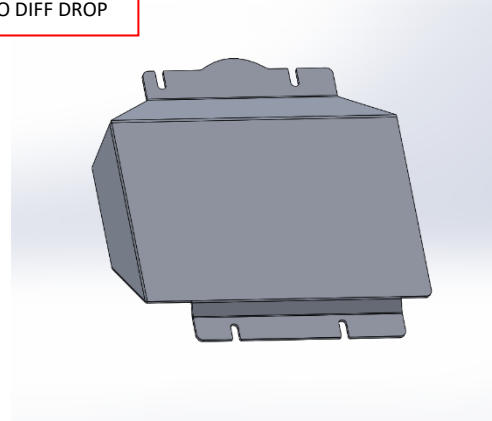
- Fit the second bash plate by using 2x M8x30s at the front and 2x M8x40s at the rear, all with heavy duty washers.

*This part will be slightly different, depending on if you have diff drop or not (see images below).*

DIFF DROP

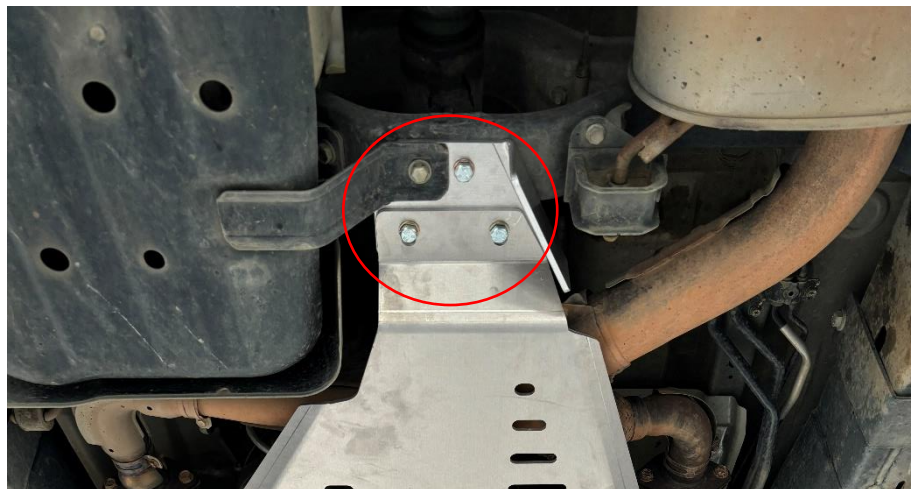
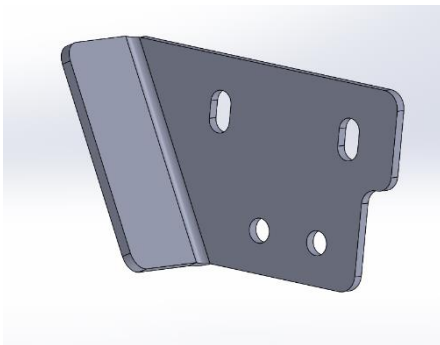


NO DIFF DROP



### STEP 6

- Fit the rear mount as per picture **LHS below**.
- Remove the fuel tank bash plate bolt and refit passing through the supplied bracket.
- Using the M10x60s passing through the cross member with large washer on top, **see image on RHS below**.



**STEP 7**

- Last but not least, fit the rear bash plate using 2x M10x30 nuts and washers at the rear and 2x M10x60s at the front, with large washers on top of cross member.
- Tighten all bolts.

