



MEG

Sometimes we believe more is more with our realistic faux shagreen, but our Meg proves that simplicity can be truly sophisticated. The narrow profile features just the right amount of our illustrious stingray-inspired material, creating a graceful frame for this large, rectangular piece. A beveled mirror provides the finishing touch.

MATERIAL

Realistic Faux Shagreen

DIMENSIONS

26"W x 38"H

Outer Profile: 1"

REFLECTION AREA

22"W x 34"H

TYPE OF HARDWARE

D Ring

Our mirrors are designed to be hung by a professional, usually by wire. Actual hanging specifics vary on a case by case basis and depend on several variables, including the mirror weight and wall type. Incorrect hanging can result in damage to the mirror or the wall. Made Goods is not responsible for damage due to incorrect hanging of our pieces.

HANGING ORIENTATION

Portrait

WEIGHT

27 lbs

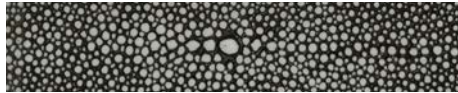
MIRROR TYPE

Beveled

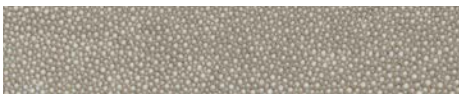
FINISHES



Blanc



Cool Gray



Sand

