



HANS

Tobacco leather covers the round column of our Hans. The simple stately lamp, perfect for a study or library, boasts leather contrast stitching. Natural variations in this material may occur. Slight differences in color and texture are characteristics of this collection's aged full-grain leather. This durable, high quality leather may show inherent markings, distressed appearance, and variations in pattern.

MATERIAL

Full-Grain Leather*

DIMENSIONS

Overall: 17" Dia x 31"H

Lamp Base: 7" Dia

Lamp Shade: 17" Dia x 10"H

SHADE

Drum, Linen

SHADE DIFFUSER

Yes

BULB TYPE

Type A - 150 Max. Wattage

UL/CUL CERTIFIED

Yes /Yes

SWITCH TYPE

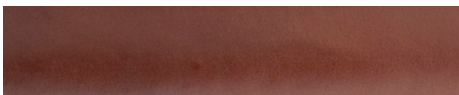
3-Way

CORD LENGTH FROM BASE

68"

**Natural variation to be expected. Slight differences in color and texture are characteristics of this collection's aged full-grain leather. This durable, high quality leather may show inherent markings, distressed appearance, and variations in pattern.*

FINISH



Tobacco

