

OLIVIA NIGHTSTAND

An Art Deco-inspired silhouette gives the Olivia a refined look—classic Upper East Side style crafted with raffia. Rounded corners, tapered legs, and inspired hardware complete the collection. Also available in a dresser.

MATERIAL

Faux Raffia

DIMENSIONS

A. 20"L x 20"W x 30"H

B. 30"L x 20"W x 30"H

NUMBER OF DRAWERS

3

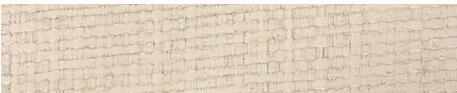
CLOSING MECHANISM

Soft-Close

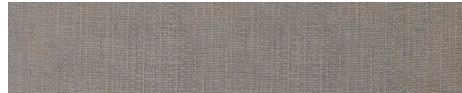
This item is handcrafted and may show slight variation in size from one piece to another.



FINISH



Off-White



Seal

