



ETHAN

Five layers of treatment create our exclusive zinc finish, used on the Ethan. Large panels with tiny brass nail heads at the seams create a streamlined look that can enhance a casual, modern, or urban vibe.

MATERIAL

Metal

DIMENSIONS

- A. 32"W x 52"H
Outer Profile: 1"
- B. 36"W x 79"H
Outer Profile: 2"

REFLECTION AREA

- A. 24"W x 44"H
- B. 28"W x 71"H

TYPE OF HARDWARE

D Ring

Our mirrors are designed to be hung by a professional, usually by wire. Actual hanging specifics vary on a case by case basis and depend on several variables, including the mirror weight and wall type. Incorrect hanging can result in damage to the mirror or the wall. Made Goods is not responsible for damage due to incorrect hanging of our pieces.

HANGING ORIENTATION

Portrait/Landscape

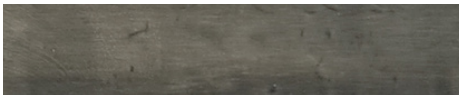
WEIGHT

- A. 67lbs
- B. 86lbs

MIRROR TYPE

Normal

FINISH



Zinc

