

How to choose proper reel for your application

▪ Important information to determine the right model: _____

1. The fluid to be used (air, water, oil, grease, or others)
2. Length, inside diameter (ID) and outside diameter (OD) of hose
3. Maximum operating pressure / temperature of fluid
4. Type of rewinding style – spring retractable, hand crank, motor rewind

▪ Swivel Options _____

SSB – Stainless Steel fluid path and swivel with Buna O-ring. Available for C, D, G series

SSV – Stainless Steel fluid path and swivel with Viton O-ring Available for C, D, G series

▪ Hose Options _____

•EPDM Rubber (AW)

Synthetic EPDM rubber hose, great for general air and water applications, or mild / diluted chemicals transfers. Temperature range -20 to 180 F



•White Washdown (WD)

EPDM rubber hose with white outer cover. Great for washdown services in creameries, dairies, packing houses, canneries and food processing plants. Temperature range -40 to 200 F



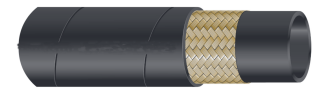
•Chemical Hose (NY)

Inner tube is made of nylon. Great for chemical, pesticides, fertilizers transfer and spraying. Temperature range -30 to 165F



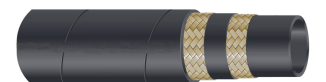
•1 braid medium pressure hose (LU)

Nitrile with one braid of high tensile steel wire. Great for petroleum based hydraulic fluids, lubricating oils and water. Temperature range -40 to 200 F



•2 braids high pressure hose (GR)

Nitrile with two braids of high tensile steel wire. Great for petroleum based hydraulic fluids, lubricating oils and water. Temperature range -40 to 200F



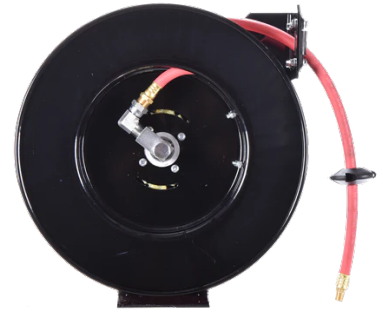
How to choose proper reel for your application continued

Basic Model number structure

- Spring retractable

L C - 3 50 - (XX) - (YYY)

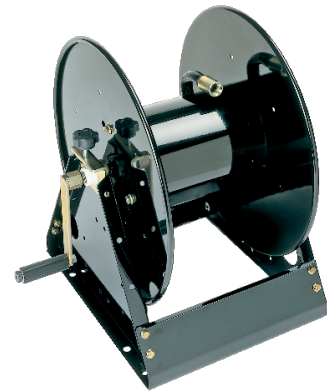
Pressure Range L... Low M... Medium H... High	Product Series	ID of the hose 2... 1/4" 3... 3/8" 5... 1/2" 7... 3/4" 10... 1"	Length (ft)	Hose type AW / WD / NY / LU / GR *Refer to Hose option section	Swivel option SSB / SSV *Refer to Swivel option section
--	----------------	--	-------------	---	---



- Manual rewind

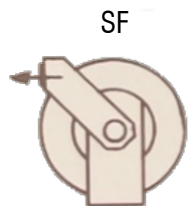
M 10 - 5 - (14) - (YYY)

Product Series	Width of the spool core (inches)	plumbing size 5... 1/2" 10... 1"	Special size reference 14... M series Mini LOWPRO... M-series Low-profile	Swivel option SSB / SSV *Refer to Swivel option section
----------------	----------------------------------	--	--	---



Guide Arm Positions

- B, C, G and UTL series reels are shipped in the Standard Front payout position. Guide arm position is adjustable to 4 different positions.
- D series reels are shipped in the bottom feed position. *D series guide position is not adjustable.



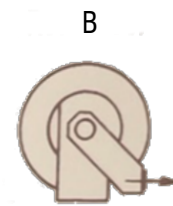
Standard Front



Ceiling



Down Feed



Bottom Feed