

ML771_5 & ML771_6 Stainless Steel Framed Mirror

Material Specifications

- **Frame:** #304 Stainless Steel
- **Back Plate & Wall Brackets:** 1.0mm Galvanised Steel
- **Mirror:** 6mm Vinyl Backed Glass (Glass is manufactured to comply with AS1288-2006 [Glass in Buildings] Code)

Dimensions

- **ML771_5:** 450mmW x 1000mmH (Includes Frame)
- **ML771_5_DESIGNER:** 450mmW x 1000mmH (Includes Frame)
- **ML771_6:** 600mmW x 1000mmH (Includes Frame)

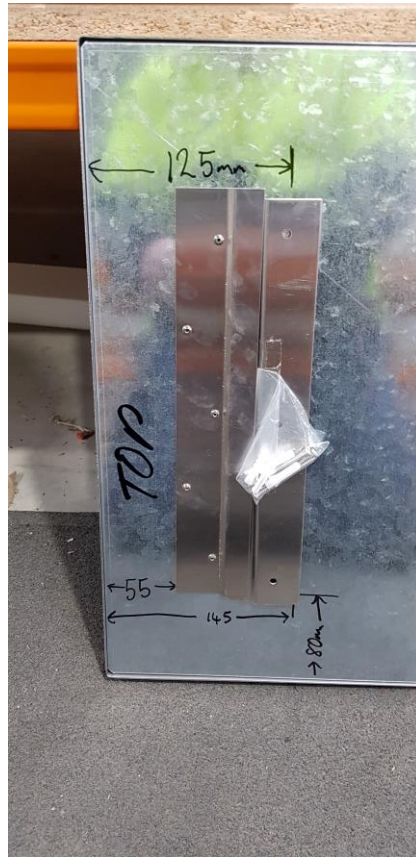
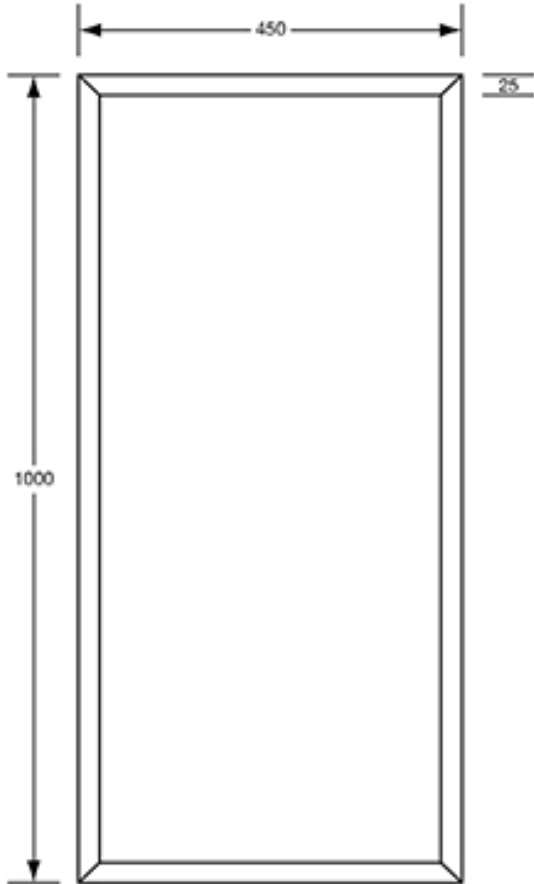
Installation Guidelines

- *May be subject to Australian Building Code Regulations for height and location fixing and may be subject to placement as per architectural drawings. In all cases, this is the responsibility of the installer.*
1. Using the integrated mounting brackets, locate height on wall and mark fixing holes, ensuring unit is level and even.
 2. Drill holes, fit wall plugs and loosely secure mounting brackets to wall surface using appropriate fixings.
 3. Check fixings are level and securely tighten fixings.
 4. Place mirror onto mounting brackets, draw down against wall surface to firmly secure in place to finish installation.
- To achieve a theft resistant fixing, run a bead of silicone over the wall mounting brackets and mirror bracket prior to attaching the mirror to the wall brackets.
 - For sufficient space to lift mirror onto wall mounting brackets, leave a minimum clearance of 25mm above the top of the mirror frame.
 - For sufficient space to remove the mirror from the wall, leave a minimum of 25mm clearance at the bottom of the mirror, and a minimum of 13mm either side of the mirror.

Features

- Unit secured with Stainless Steel wall brackets.
- All joins and welds polished.





This product is AS1428.1 compliant (accessible compliant) when installed in accordance with the guidelines.

The technical recommendations contained in this document are necessarily of a general nature and should not be relied on for specific applications without first securing competent advice. Whilst Metlam Australia Pty Ltd has taken all reasonable steps to ensure the information contained herein is accurate and current, it does not warrant the accuracy or completeness of the information and does not accept liability for errors or omissions. Any Commercial product should only be installed by a competent tradesperson and serviced/maintained by knowledgeable janitorial staff or competent people. Metlam Australia accepts no responsibility for any damage to product, walls or fixtures due to incorrect installation or maintenance of any of their products.

The photographs and line drawings of the products presented above are representational only. Metlam Australia Pty Ltd reserves the right to, and from time to time, make changes and improvements in design and dimensions.