

Installation Manual

Fireclay Farmhouse Sinks

General Recommendations:

- Please read installation and maintenance instructions thoroughly.
- Inspect your sink for any noticeable damage before installation.
- Check all local applicable plumbing and building codes.

Due to the nature of Fireclay Farmhouse Sinks, dimensions could vary +/-2%, we strongly suggest using the actual sink for custom cutting of countertop.

Sealant used between the bench top, and the sink needs to be flexible (such as silicone), rather than rigid to allow for differential in expansion rates. It is important to use some silicone sealant between the stainless-steel waste flange and the glazed sink itself. This is to stop water from draining under the flange when the sink is filled. Ensure excess sealant is cleaned before it dries. A cloth dampened with methylated spirits is recommended to finish up the cleaning.

The supplier does not accept any liability for damage to countertop, sink fixture, taps or personal injury during installation. Warranty is void if these installation instructions are not followed.

In addition to the below instructions, we strongly suggest using “How to Install Farmhouse sink” to search video on YouTube. <https://www.youtube.com/watch?v=vQoek-BkFa0> is a good example.

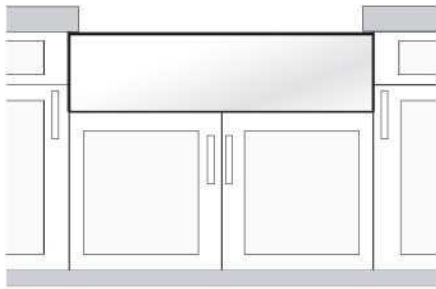
Tools and Materials Needed:

- | | | |
|-------------------|---------------------|----------------------------|
| •Tape Measure | •Framing Square | •Eye Protection |
| •Hacksaw / Jigsaw | •Ear Protection | •Silicone Adhesive Sealant |
| •Cleaning Cloths | •Shims | •Wood Braces |
| •Pencil (NOT ink) | •Methylated Spirits | |

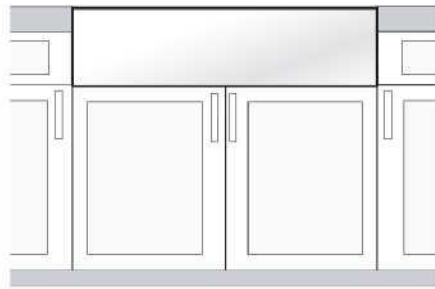
Be sure to use proper tools and always wear personal safety devices for your protection.
--

Installation Options:

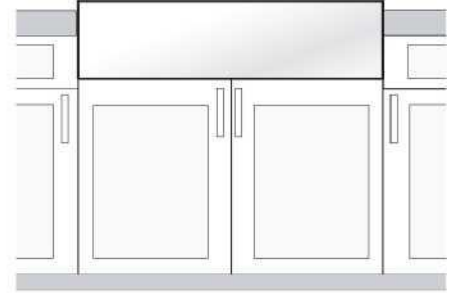
There are different installation options depending on your cabinet design.



Undermount Installation



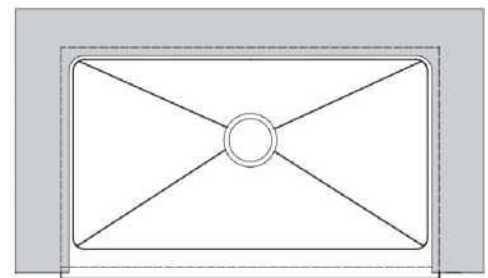
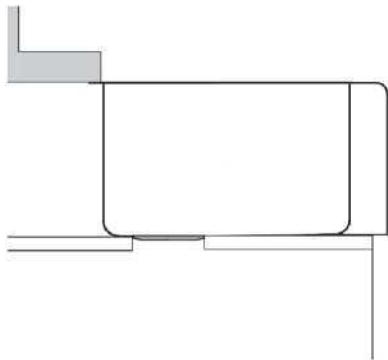
Flush mount Installation



Built-up Installation

Caution: All installation types need to allow room for tap installation. Ensure adequate clearance behind the sink for any tapware and backsplash, as well as full range of motion for tap spouts and handles.

Typical undermount installation with 5mm overhanging is recommended.



Typical flush mount and built-up installation.

Built-up installation may expose sink sides to be raised up to 25mm above the countertop.

1. Prepare the Sink Base Cabinet

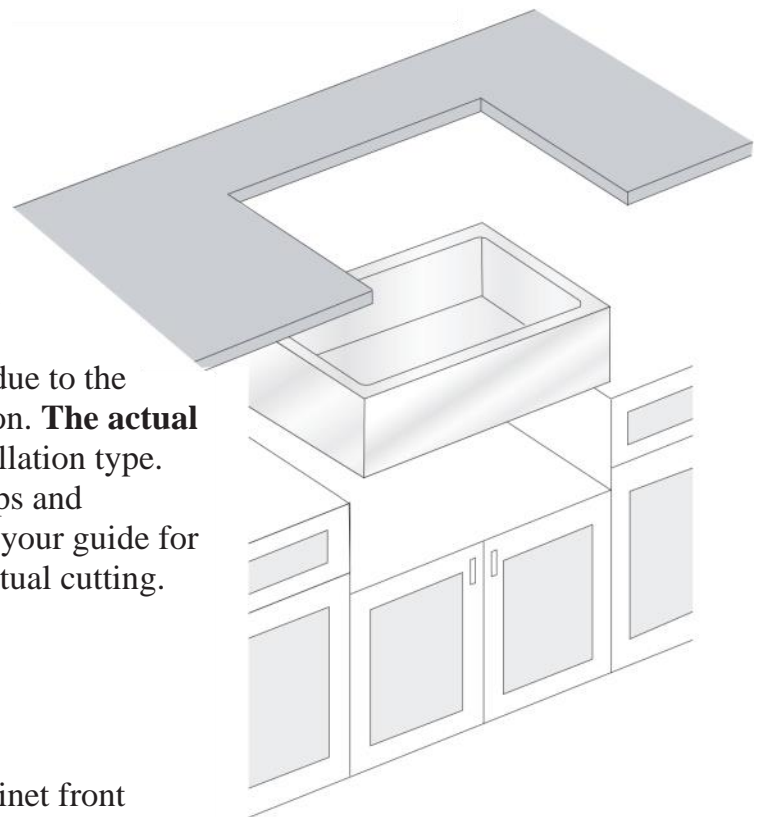
There are different installation options depending on your design.

Farmhouse sinks require custom sink base cabinets with a front cutout to accommodate a **25cm** deep sink. Build a platform on a support frame inside the sink base cabinet. Platform must support the weight of the sink.

Make a Template and Cutout

Depending on the installation option, make proper cutout of the countertop.

We recommend a **5mm** overhanging on 3 sides when installed undermount style. For a flush mount of built-up installation, cut countertop along with outside line of the sink profile. The front end of Farmhouse sinks are designed to be installed **19mm** extended out beyond the front end of the countertop. No template is provided due to the custom nature of each application and installation. **The actual sink** is used as the template guide for each installation type. After centering the sink and allowing for any taps and backsplashes, use a pencil to outline the sink as your guide for the cutout, allowing for any reveal before the actual cutting.



2. Set the Sink

Set the sink on top of the cabinet or into the cabinet front cutout.

3. Install the Sink

Carefully clean the bottom of the countertop and the top flange of the sink with denatured alcohol. Apply a bead of silicone adhesive (not supplied) around the edge of the sink. Place the countertop onto the sink, and remove excess sealant from the lip of the sink or any other surfaces.

CARE AND MAINTENANCE

As the glazed surface is extremely smooth and non-porous, cleaning with soapy water is usually all that is required to keep your sink clean. To maintain the original appearance, it is important to do a regular clean with non-abrasive cleaners and a soft sponge or cloth.

Fireclay sinks are created by firing the clay at high temperatures 2200 degree; therefore, some visual distortion may occur. This is not a defect but can be seen to add to the beauty of the product.

Water Stains from Hard Water

In hard water areas limescale can build-up on the surface and become visible when stained by food and drink. We recommend regular cleaning with a solution of 3-parts hot water and 1-part white vinegar or specific limescale cleaners can be used for example Viakal. Rinse well after. Keeping the sink dry will avoid future water stains.

General Stains

Fine fireclay sinks are glazed so are completely nonporous and should not stain. However, if marks or stains occur, they should be removed immediately with hot water and a gentle cleaning agent. Cleaners, such as Jif or gumption, can be used to remove tougher stains.

For more stubborn stains, soak in water and detergent mixture overnight, scrub off any dirt and stains, and finally rinse with water.

Light Marks

Pans, metal cutlery and cooking utensils can leave grey metal marks on the surface as the glazed finish is much harder than the metal utensils used in the kitchen. These marks can be removed using a powder compound called Bar Keeper's Friend, or similar. To prevent metal marks, a stainless-steel grid is supplied with the sink.

Scratches

Fireclay is extremely durable and long lasting. However, if scratches or chips do occur, Cramer Repair Kit is recommended for minor damages to the sink.

Plastic bowls

Avoid using plastic washing-up bowls, as particles of grit can become impregnated in the base of the bowl and act like sandpaper causing scratching to the glazed surface.

Do Not Use

Fireclay sinks can withstand many chemical cleaning agents; however, it can cause damage to the wastes and taps. Below is not advised.

- Use of Steel wool, scourers or metal brush
- Harsh cleaners containing severe acidic or alkaline chemicals such as sodium hydroxide, sulfuric acid or hydrochloric acid
- Toilet cleaners such as Chlorinated Cleansers or bleach of any type